



Industrial Land For Sale



3620 C St. & WCR 47
Greeley, CO 80631
\$ 5,000,000

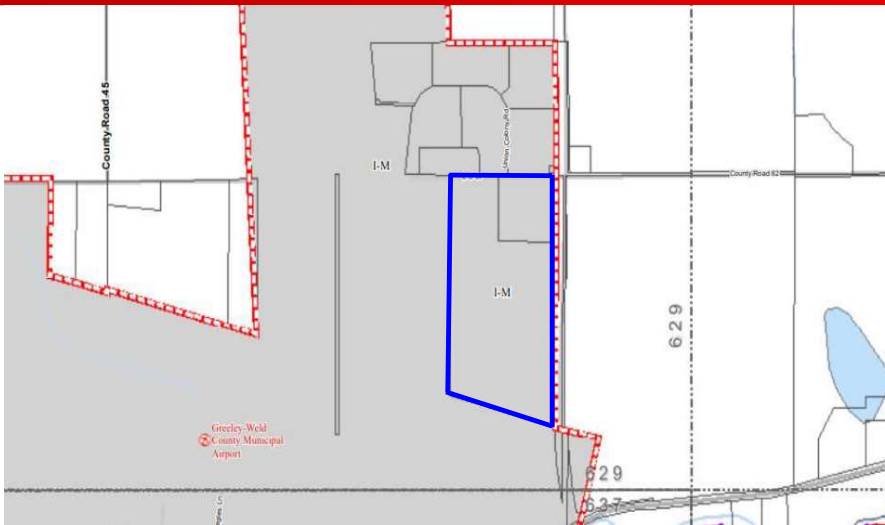
- Easy Access to HWY 85 and HWY 263
- Adjoins Weld County Parkway
- All Utilities Available to Site
- Next To Greeley-Weld County Airport
- Permit Ready
- Located in an Enterprise Zone



Zoning: I-M

Available: 64.74 Acres

Price: \$5,000,000



Prime industrial site with paved frontage along north and east boundaries. Acceleration lane onto Weld County Parkway (CR 47). This property consists of 2 parcels, 10 acres and 54.74 acres and annexed into City of Greeley. The area surrounding the property consists of Greeley/Weld County Airport to the west, Union Colony Industrial Park to the north, Frontage on Weld County Parkway to the east and HWY 263 to the south. Will accommodate future use such as Agribusiness, Commercial/Industrial Distributuin, Lt Manufacturing, Research & Development, Retail, Warehouse, Storage etc.

Call for more details:
 Patrick McNear
 (970) 352-1212
 TopMoJo@AOL.com