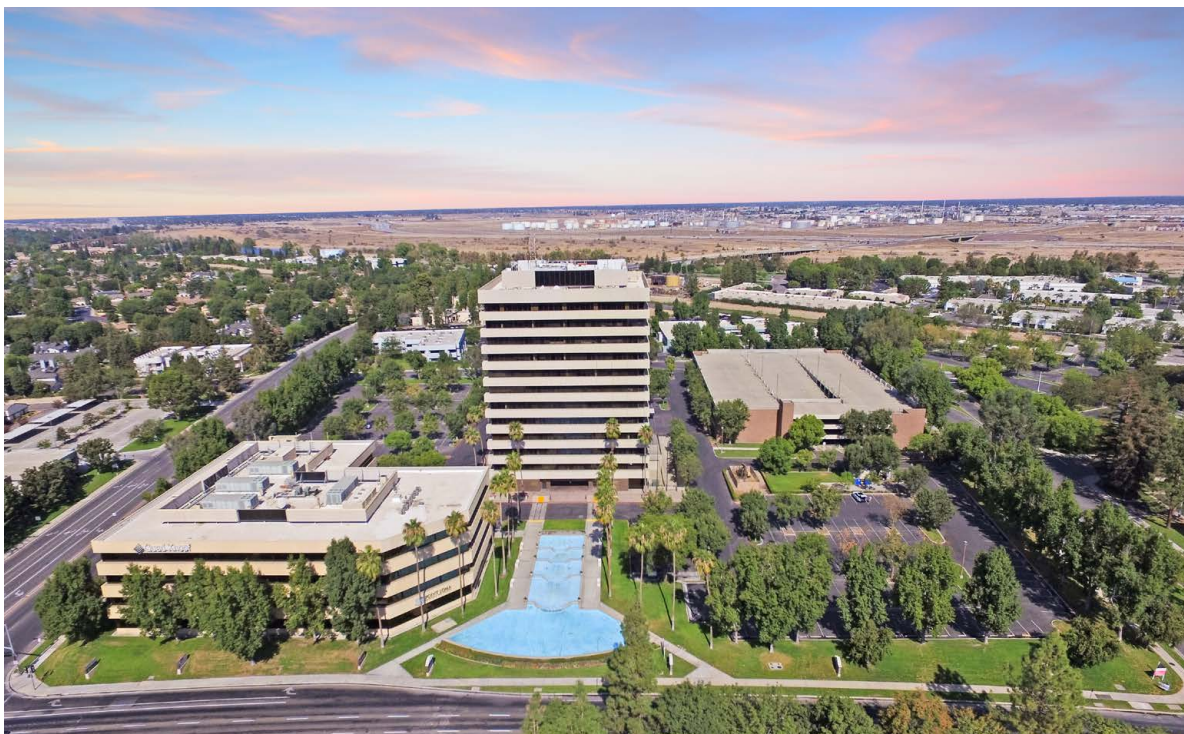

FOR LEASE



THE STOCKDALE TOWERS

5060 CALIFORNIA AVENUE
BAKERSFIELD, CA 93309



Property Highlights

- Common areas offer rich oak paneling & trim; granite & marble flooring; chandeliers & plush carpeting.
- Full fitness center available to all tenants with flat screen tv's; weight machines; treadmills; stationary bikes; free weights; marble men's & woman's locker/shower areas with oak lockers.
- Basement level truck dock for shipping & receiving
- Improvements Dependent on Term and Rate
- Monument Signage Available and possible building signage
- Ground floor Covenant Coffee Shop
- Credit Union, Bank, and Beauty Salon on Ground Floor

ASKING RENT

- \$1.85/RSF Modified Gross Excludes Utilities & Janitorial



GROUND FLOOR
COVENANT
COFFEE SHOP



ON-SITE FITNESS
CENTER FOR
TENANTS (FREE
MEMBERSHIP
AVAILABLE TO
TENANTS AND
EMPLOYEES)



GROUND FLOOR
BANK & CREDIT
UNION



4-LEVEL
PARKING
GARAGE
LOCATED
ADJACENT
TO THE
BUILDING FOR
TENANTS USE



NICHE BEAUTY
LOUNGE

CITY VIEW
SALON

JOSIE WHEELER
WAX STUDIO

DYE VIVID A CDB
CONCIERGE
SALON CONCEPT

THE STRAND



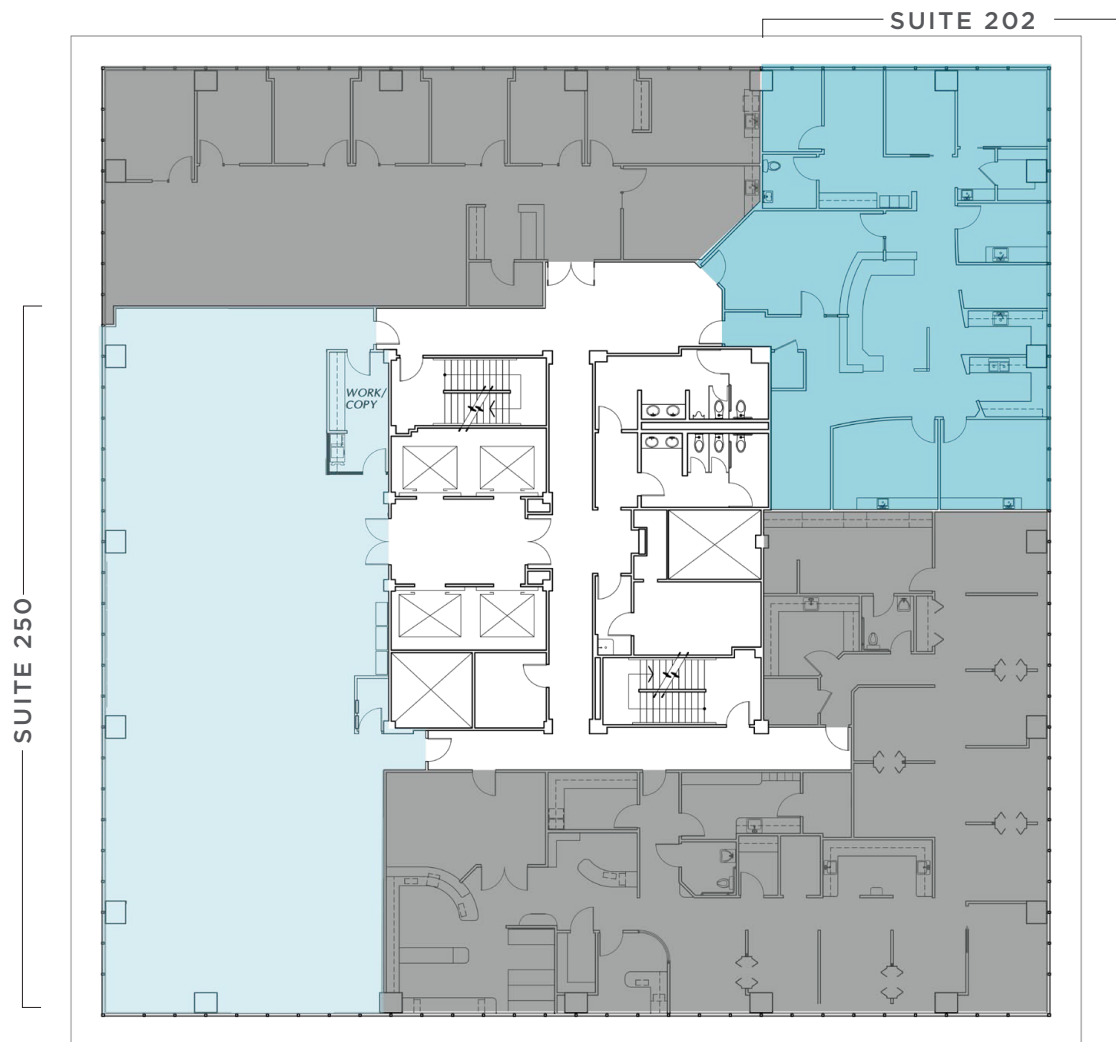
STOCKDALE TOWER I
5060 CALIFORNIA AVENUE
AVAILABLE SUITES

Second Floor	Suite 202	±2,564 RSF - Oral Surgery Office
	Suite 250	±3,871 RSF
Third Floor	Suite 300	±4,691 RSF
	Suite 315	±4,146 RSF
	Suite 320	±1,688 RSF
	Suite 325	±2,604 RSF
Fourth Floor	Suite 400	±4,767 RSF (Divisible from 1,750 RSF to 2,000 RSF)
Fifth Floor	Suite 550	±3,489 RSF
Sixth Floor	Suite 670	±2,804 RSF
Seventh Floor	Suite 700	±5,000 RSF
Ninth Floor	Suite 950	±815 RSF
Tenth Floor	Suite 1020	±3,296 RSF
Twelfth Floor	Suite 1200	±15,073 RSF



15,073 RSF

2nd Floor



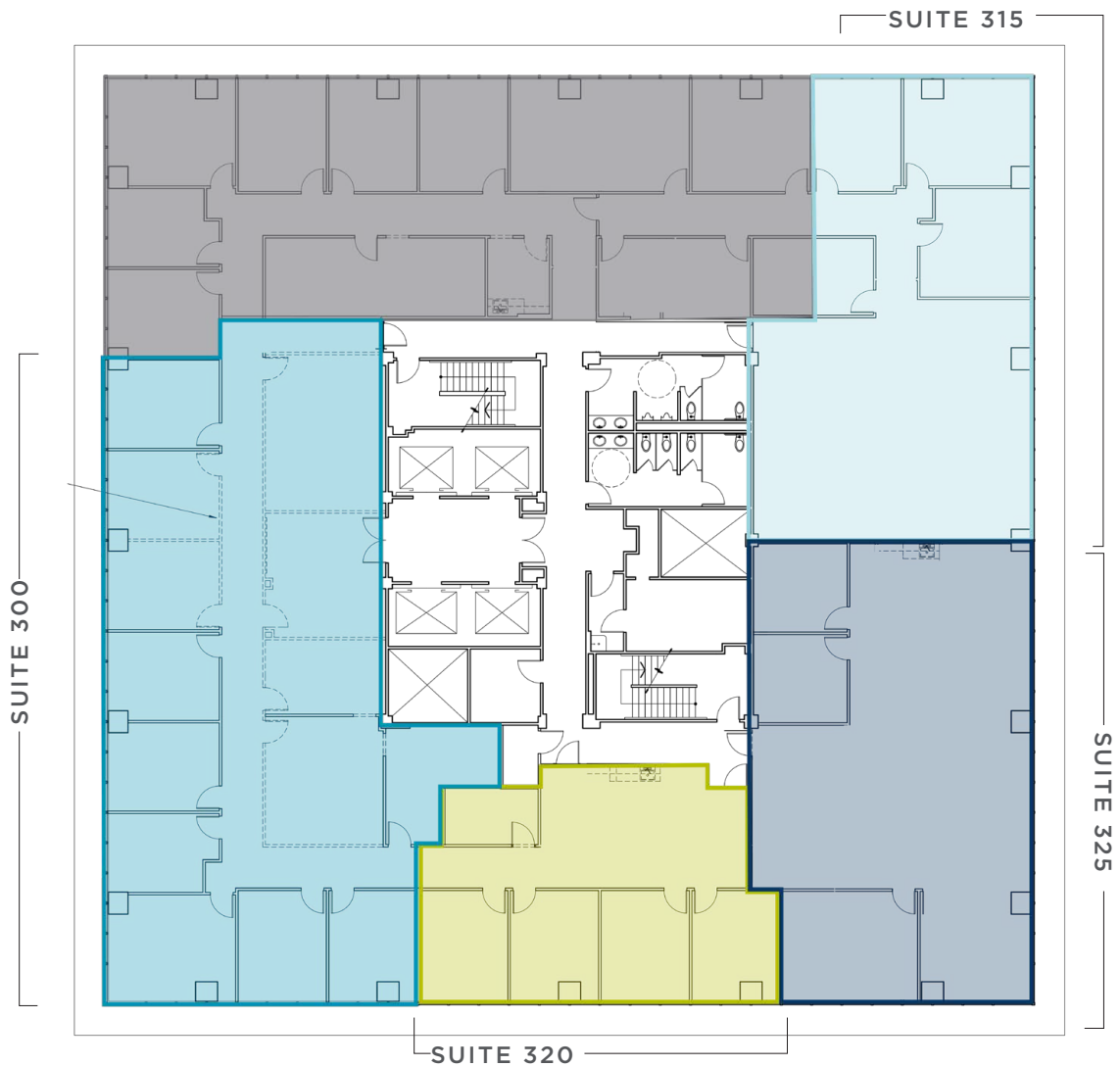
2ND FLOOR AVAILABLE SUITES:

- Suite 202 : $\pm 2,564$ RSF - Oral Surgery Office
- Suite 250 : $\pm 3,871$ RSF



15,073 RSF

3rd Floor



3RD FLOOR AVAILABLE SUITES:

- **Suite 300** : ±4,691 RSF
(Divisible from 1,750 RSF to 11,538 RSF)
- **Suite 315** : ±4,146 RSF
- **Suite 320** : ±1,688 RSF
- **Suite 325** : ±2,604 RSF

15,073 RSF

4th Floor



4TH FLOOR AVAILABLE SUITES:

- **Suite 400** : ±4,767 RSF
(Divisible from 1,750 RSF to 2,000 RSF)

15,073 RSF

5th Floor

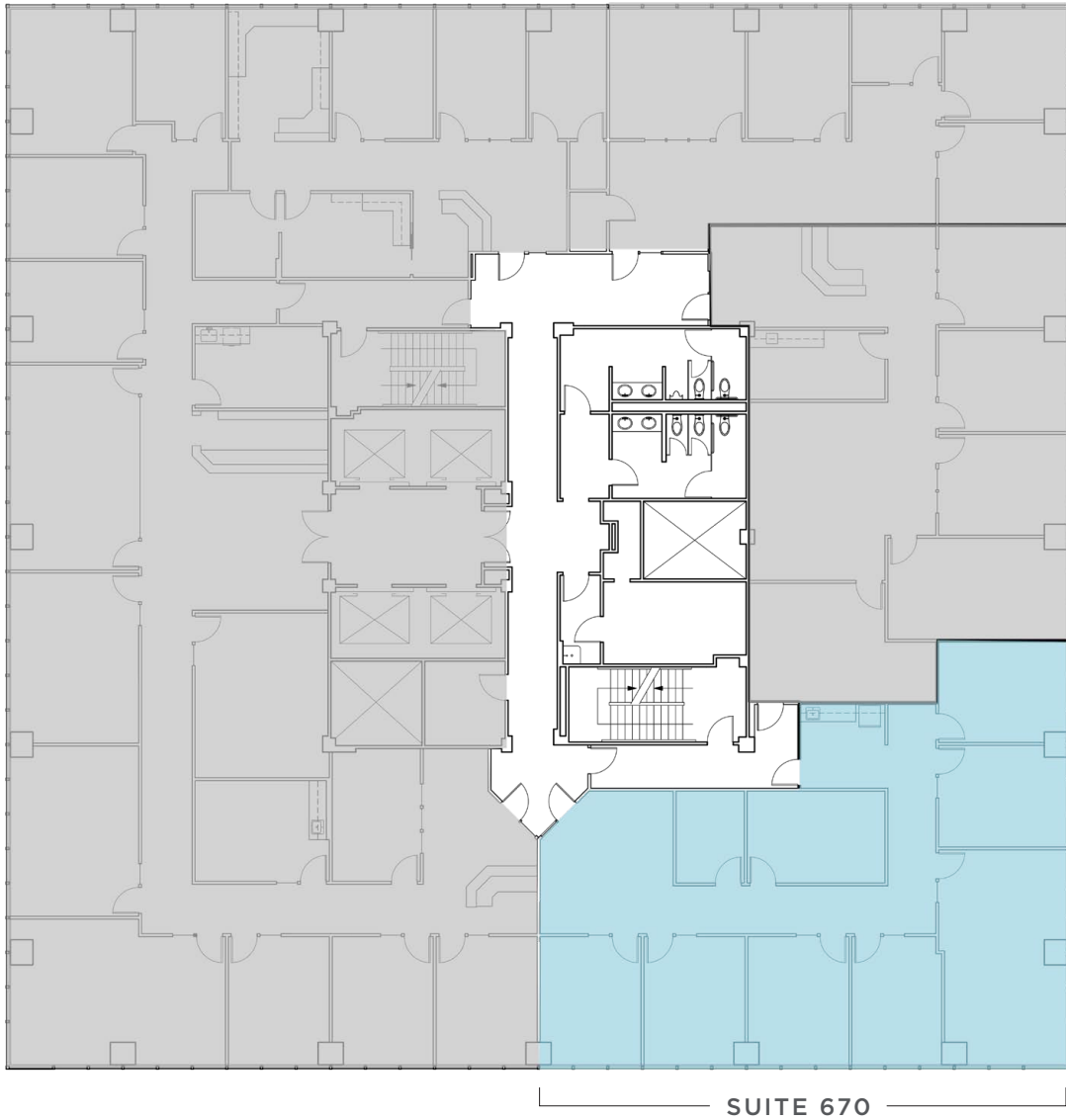


5TH FLOOR AVAILABLE SUITES:

- Suite 550 : ±3,489 RSF

15,073 RSF

6th Floor



6TH FLOOR AVAILABLE SUITES:

- Suite 670 : ±2,804 RSF

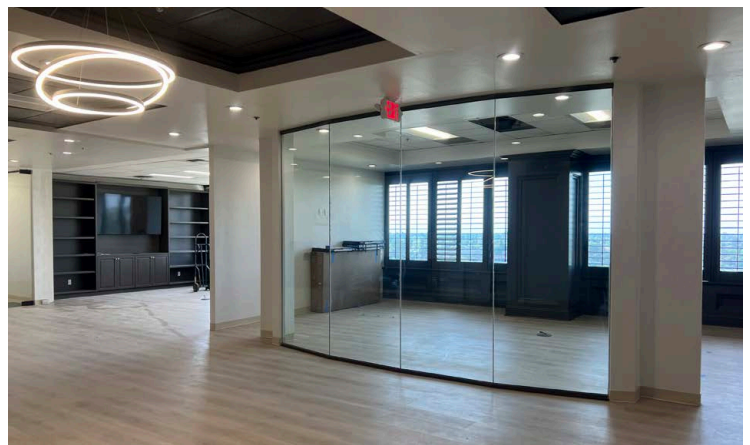
15,073 RSF

7th Floor



7TH FLOOR AVAILABLE SUITES:

- **Suite 700** : $\pm 5,000$ RSF
(Divisible from 1,500 RSF to $\pm 5,000$ RSF)



15,073 RSF

9th Floor

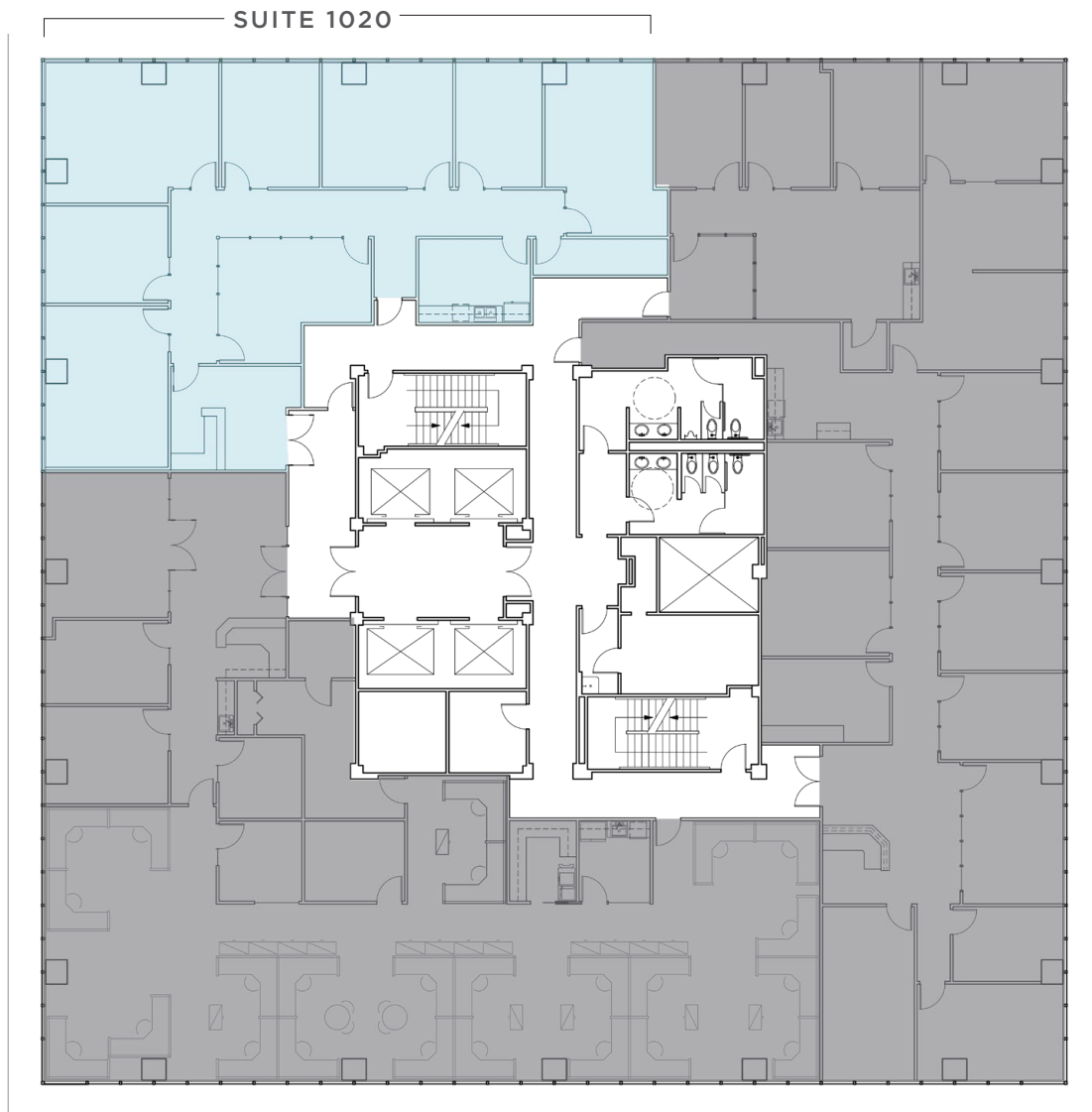


9TH FLOOR AVAILABLE SUITES:

- Suite 950 : ±815 RSF

15,073 RSF

10th Floor

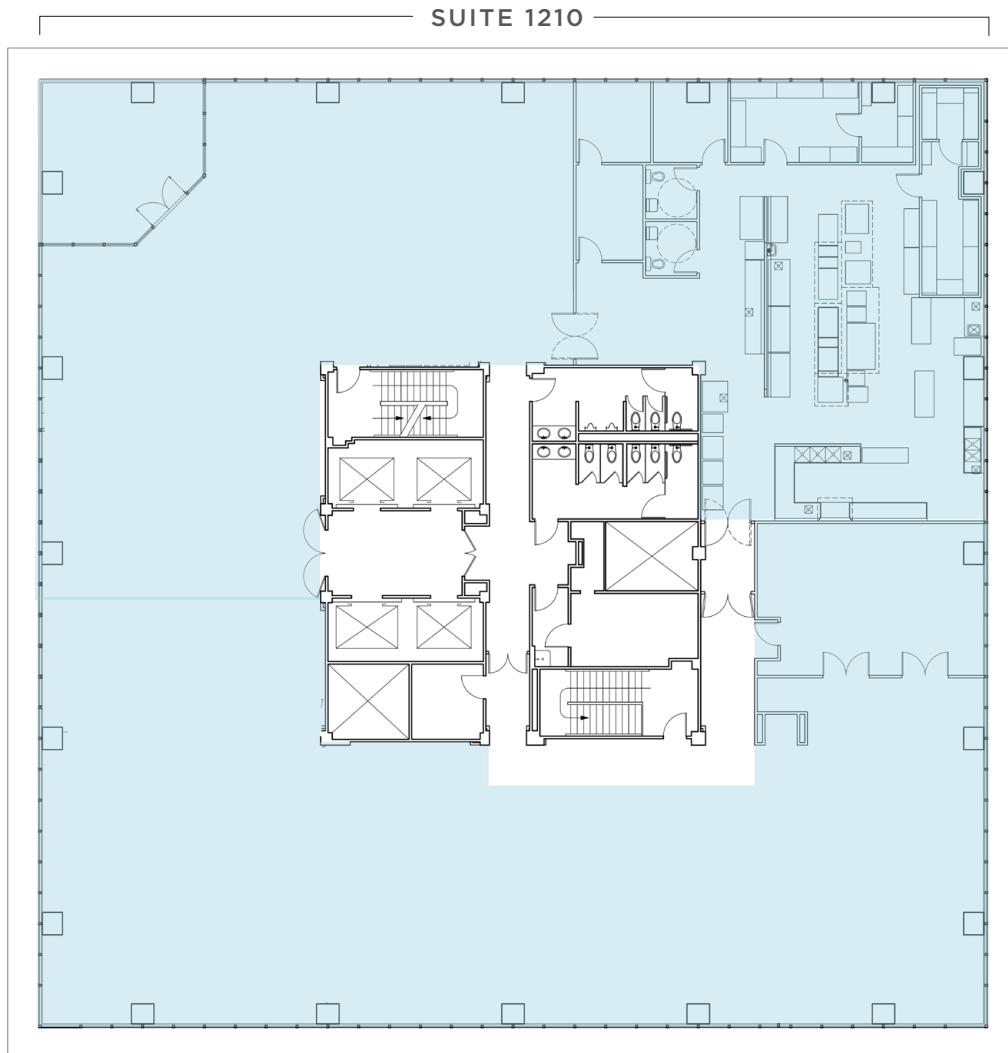


10TH FLOOR AVAILABLE SUITES:

- Suite 1020 : ±3,296 RSF

15,073 RSF

12th Floor



12TH FLOOR AVAILABLE SUITES:

- **Suite 1200** : ±15,073 RSF
- Full Built-Out Kitchen, Outdoor Patio
- Can also be used as office





CONTACT INFORMATION

SCOTT SALTERS

Senior Director

+1 661 204 6725

scott.salters@cushwake.com

ALEX BALFOUR

Executive Director

+1 661 304 2521

alex.balfour@cushwake.com

KRISTIN FRICKEL

Associate

+1 661 912 6005

kristin.frickel@cushwake.com



©2025 Cushman & Wakefield. All rights reserved. The information contained in this communication is strictly confidential. This information has been obtained from sources believed to be reliable but has not been verified. NO WARRANTY OR REPRESENTATION, EXPRESS OR IMPLIED, IS MADE AS TO THE CONDITION OF THE PROPERTY (OR PROPERTIES) REFERENCED HEREIN OR AS TO THE ACCURACY OR COMPLETENESS OF THE INFORMATION CONTAINED HEREIN, AND SAME IS SUBMITTED SUBJECT TO ERRORS, OMISSIONS, CHANGE OF PRICE, RENTAL OR OTHER CONDITIONS, WITHDRAWAL WITHOUT NOTICE, AND TO ANY SPECIAL LISTING CONDITIONS IMPOSED BY THE PROPERTY OWNER(S). ANY PROJECTIONS, OPINIONS OR ESTIMATES ARE SUBJECT TO UNCERTAINTY AND DO NOT SIGNIFY CURRENT OR FUTURE PROPERTY PERFORMANCE.