

CHELSEA ARTS CENTRE

- Prime West Chelsea location between West 24th and 25th Streets — steps from The High Line and Hudson River Park
- Several units available ranging in size from 1,198 rsf to 2,874 rsf
- Building features 24/7 access, operable windows, 3 elevators (1 oversized), tenant-controlled HVAC and high quality interior finishes
- Walking distance to Hudson Yards, Chelsea Waterside Park, Chelsea Dog Park, Pier 62 Skatepark, Pier 62 Carousel, Hudson River Park, Pier 63, The High Line, Chelsea Piers, and Little Island at Pier 55

210 11TH AVE

WWW.210ELEVENTH.COM

February 2025

CHELSEA ARTS CENTRE

210 11TH AVE

ABS Partners Real Estate, as the exclusive leasing and managing agent is pleased to offer the following opportunities for lease:

Current Availabilities

Unit	Size	Possession
Suite 401:	2,550 rsf - 9 Windows providing west exposure and Hudson River views, exposed ceiling - Fully built-out office and showroom space with (2) glass-front offices, and open area	Immediate
Suite 501:	1,198 rsf - 3 Windows providing south exposure; bright, move-in condition space, (1) small interior office with pocket-door closure, and multiple wall mounted open shelving and doored cabinets	Immediate
Suite 603:	2,874 rsf - 8 Windows providing south and east exposure; fully built-out wide open space	Immediate
Suite 906:	1,552 rsf - 6 Windows providing south and east exposures and abundant natural light; built-out wide open space	June 1, 2025

- Comments:
- Boutique building offering flexible lease terms - Good city and river views
 - All units feature polished concrete floors, operable windows, and exposed ceilings
 - Most spaces are wide open with creative lighting and pantry
 - Some spaces have offices and conference rooms
 - Prime Chelsea neighborhood - Hudson Yards vicinity
 - Spectrum (formerly Time Warner) & Verizon data/telecom
 - Bike Room with storage for helmets and bike air pump

Join Fashion Tenants such as:

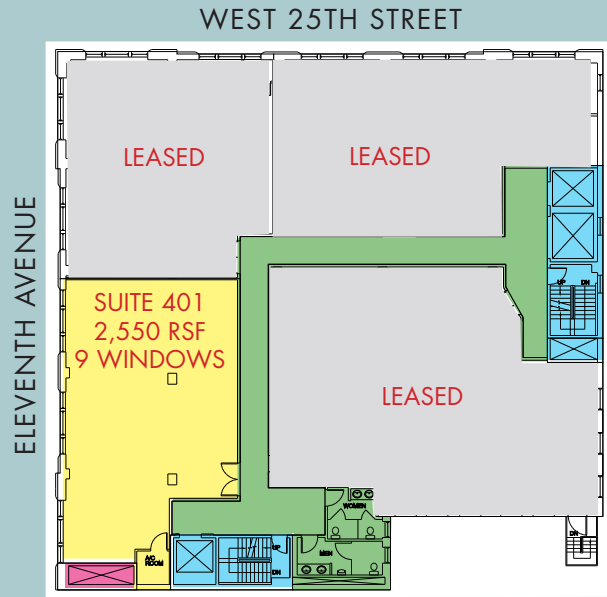
Marc Cain, Gabriela Hearst, Jonathan Simkhai, Isabel Marant, Mackage, Rainbowwave
Citizens of Humanity, Michael Stars, EFG Apparel

Join Art & Design Tenants such as:

Sears-Peyton Gallery, Amsterdam Whitney International Fine Art, Craig Greenberg Architects, Moleskin America
Betsy Senior Fine Art, Minagawa Art Lines, Bossa Furniture, Team Laird, Fernando Jorge

210 ELEVENTH AVENUE

Suite 401: 2,550 rsf- 9 Windows provide west exposure and Hudson River views (2) glass-front offices, fully built-out office and showroom space with (2) glass-front offices and open area, exposed ceiling



(for descriptive purposes only; not to scale.)



Furniture shown for concept only



For further information and/or inspection, please contact:

Audrey Novoa

Licensed Associate Real Estate Broker
212.400.6091 | anovoa@absre.com

Ben Waller

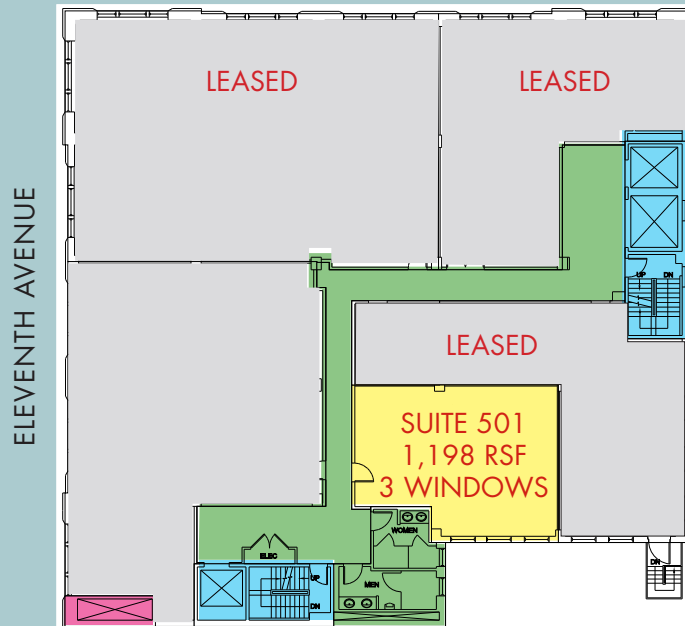
Licensed Associate Real Estate Broker
212.400.9515 | bwaller@absre.com

210 ELEVENTH AVENUE

Suite 501: 1,198 rsf - 3 Windows providing south exposure; bright, move-in condition space, (1) small interior office with pocket-door closure, and multiple wall mounted open shelving and doored cabinets

[Click to View Virtual Tour](#)

WEST 25TH STREET



(for descriptive purposes only; not to scale.)



For further information and/or inspection, please contact:



Audrey Novoa

Licensed Associate Real Estate Broker
212.400.6091 | anovoa@absre.com

Ben Waller

Licensed Associate Real Estate Broker
212.400.9515 | bwaller@absre.com

210 ELEVENTH AVENUE

Suite 603: 2,874 rsf - 8 Windows providing south and east exposure; Fully built-out wide open space

[Click to View Virtual Tour](#)



(for descriptive purposes only; not to scale.)



For further information and/or inspection, please contact:

Audrey Novoa

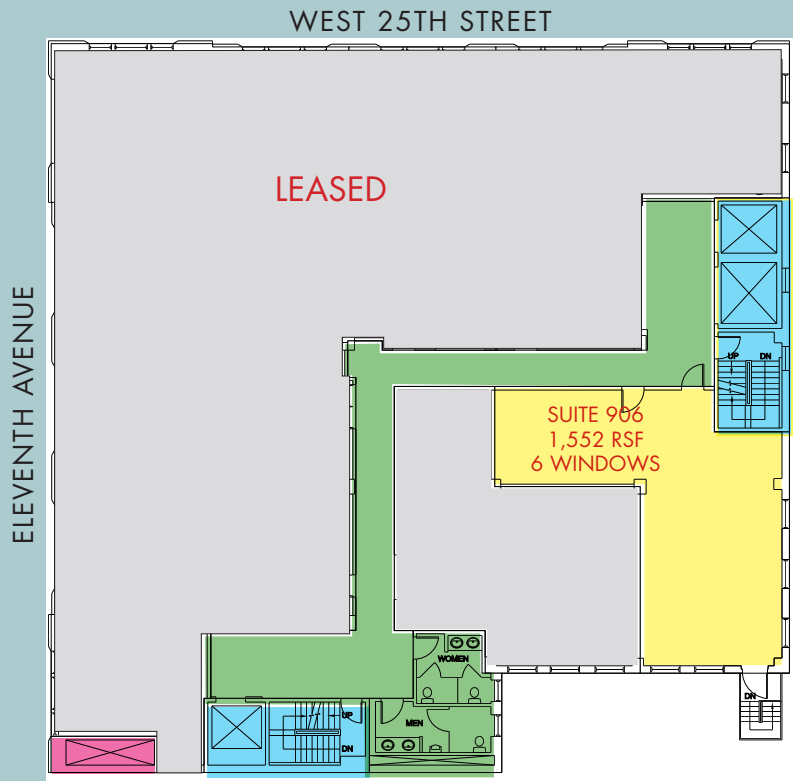
Licensed Associate Real Estate Broker
212.400.6091 | anovoa@absre.com

Ben Waller

Licensed Associate Real Estate Broker
212.400.9515 | bwaller@absre.com

210 ELEVENTH AVENUE

Suite 906: 1,552 rsf- 6 Windows providing south and east exposures and abundant natural light; Fully built-out wide open space



(for descriptive purposes only; not to scale.)



For further information and/or inspection, please contact:

Audrey Novoa

Licensed Associate Real Estate Broker
212.400.6091 | anovoa@absre.com

Ben Waller

Licensed Associate Real Estate Broker
212.400.9515 | bwaller@absre.com



For further information and/or inspection, please contact:

Audrey Novoa

Licensed Associate Real Estate Broker
212.400.6091
anovoa@absre.com

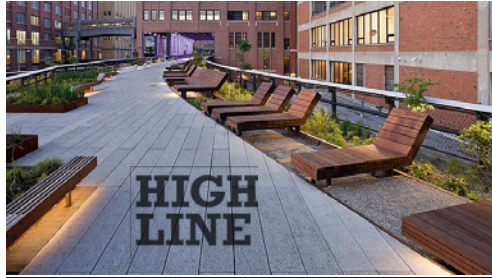
Ben Waller

Licensed Associate Real Estate Broker
212.400.9515
bwaller@absre.com

WWW.210ELEVENTHAVE.COM



Hudson River Park



High Line



Hudson Yards