



# For Sublease

## Class A office space now available in Owings Mills

- Available space: 8,616 SF
- Sublease extends through December 2027
- Rental rate: \$12.19 NNN
- Central location between Baltimore, Washington and DC areas
- Conveniently located near I-795 and I-695, restaurants, shops, gas station and other retailers

**Cronhill Corporate Center**  
**11425 Cronhill Drive**  
**Owings Mills, MD 21117**

**Rob Freedman SIOR**

+1 410 452 9444

[rob.freedman@jll.com](mailto:rob.freedman@jll.com)

**Dominic Digiovannantonio**

+1 301 752 6799

[dom.digi@jll.com](mailto:dom.digi@jll.com)

**Gary Applestein SIOR**

+1 410 404 3196

[gary.applestein@jll.com](mailto:gary.applestein@jll.com)

[jll.com/baltimore](http://jll.com/baltimore)

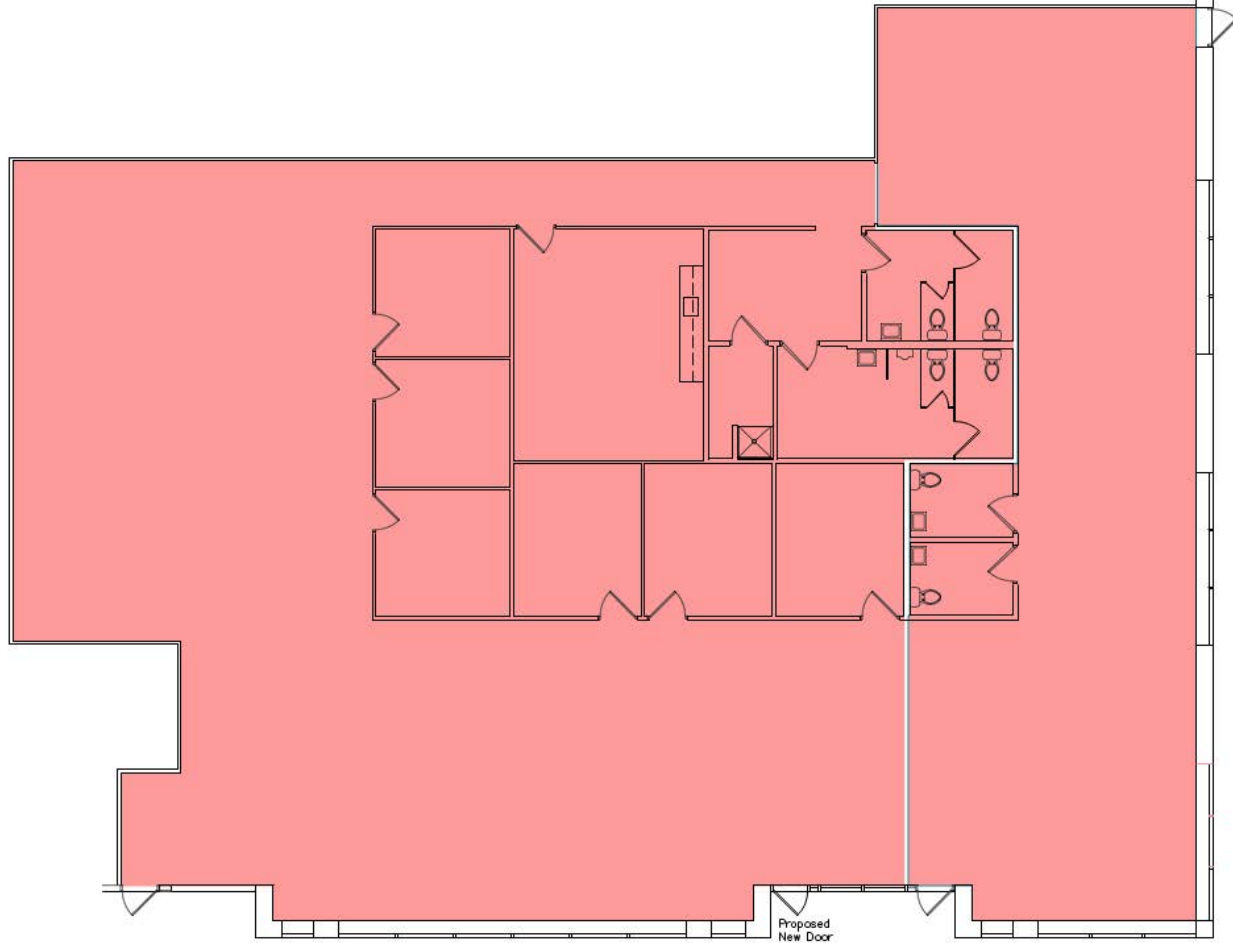
Property details: 8/9/2022







## Available Space | 8,616 SF



Although information has been obtained from sources deemed reliable, neither Owner nor JLL makes any guarantees, warranties or representations, express or implied, as to the completeness or accuracy as to the information contained herein. Any projections, opinions, assumptions or estimates used are for example only. There may be differences between projected and actual results, and those differences may be material. The Property may be withdrawn without notice. Neither Owner nor JLL accepts any liability for any loss or damage suffered by any party resulting from reliance on this information. If the recipient of this information has signed a confidentiality agreement regarding this matter, this information is subject to the terms of that agreement. ©2022 Jones Lang LaSalle IP, Inc. All rights reserved.

