

**700**  
**SHADOW LANE**  
LAS VEGAS, NV 89106

**SHADOW LANE**  
MEDICAL PLAZA  
**FOR LEASE**

SUITES RANGING FROM  
**1,148-7,836 SF**

700  
MEDICAL OFFICE  
BUILDING



**HEALTHCARE**

**JAMIE KRAHNE**  
SENIOR VICE PRESIDENT  
702.216.2363 **CELL**  
jamiiek@dcghealthcare.com  
B.143850/PM.164496

**MIKE TYMCZYN**  
VICE PRESIDENT  
702.271.4004 **CELL**  
miket@dcghealthcare.com  
S.177844

## PROPERTY HIGHLIGHTS

- On the campus of Valley Hospital Medical Center
- Turnkey Suites Available
- Centrally located within the Las Vegas Medical District
- Easy access from I-15, US 95/93 and the Las Vegas strip
- Current specialties include: **Cardiology - Oncology - Internal Medicine**

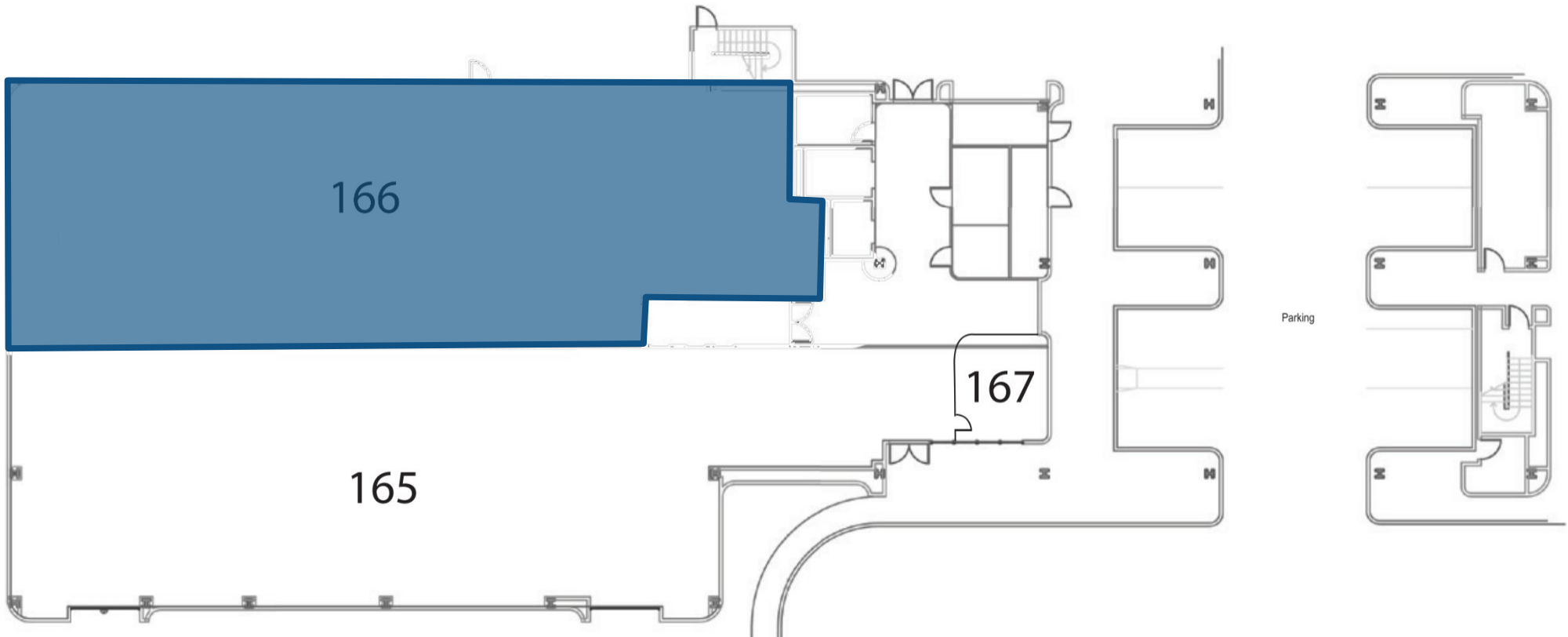


# FIRST FLOOR

## AVAILABLE SUITES

SUITE 166

4,697 SF



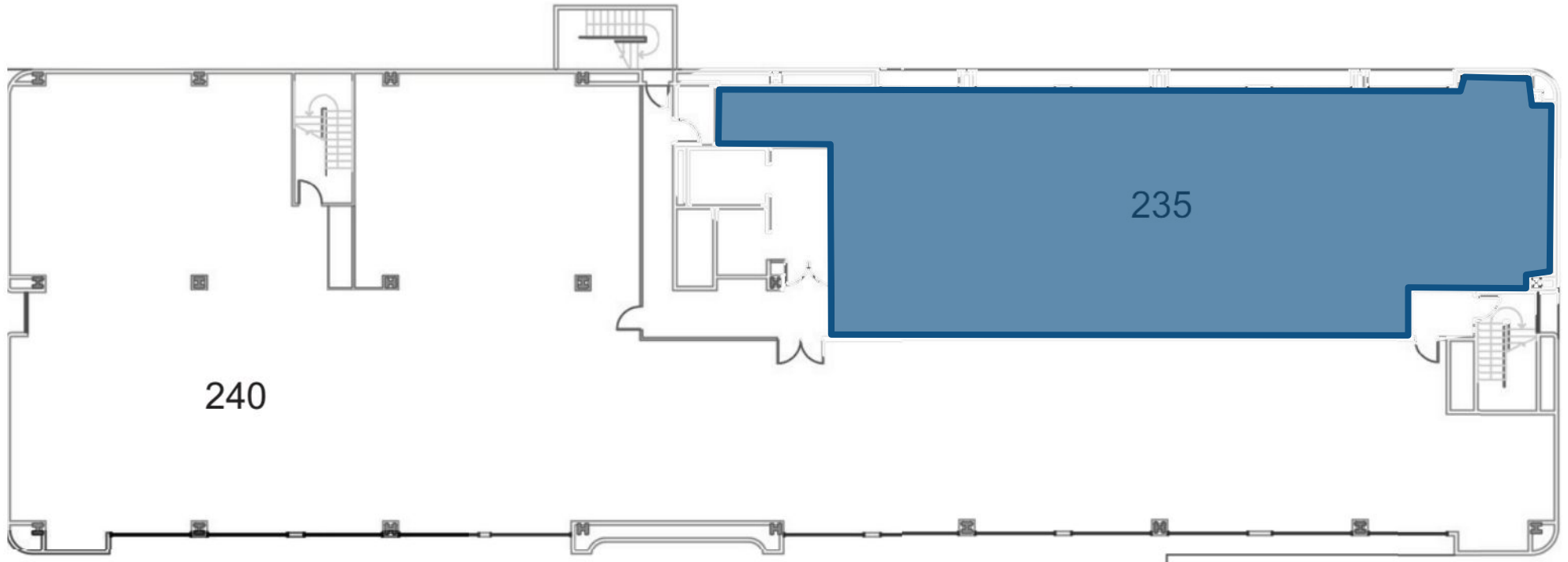


# SECOND FLOOR

## AVAILABLE SUITES

SUITE 235

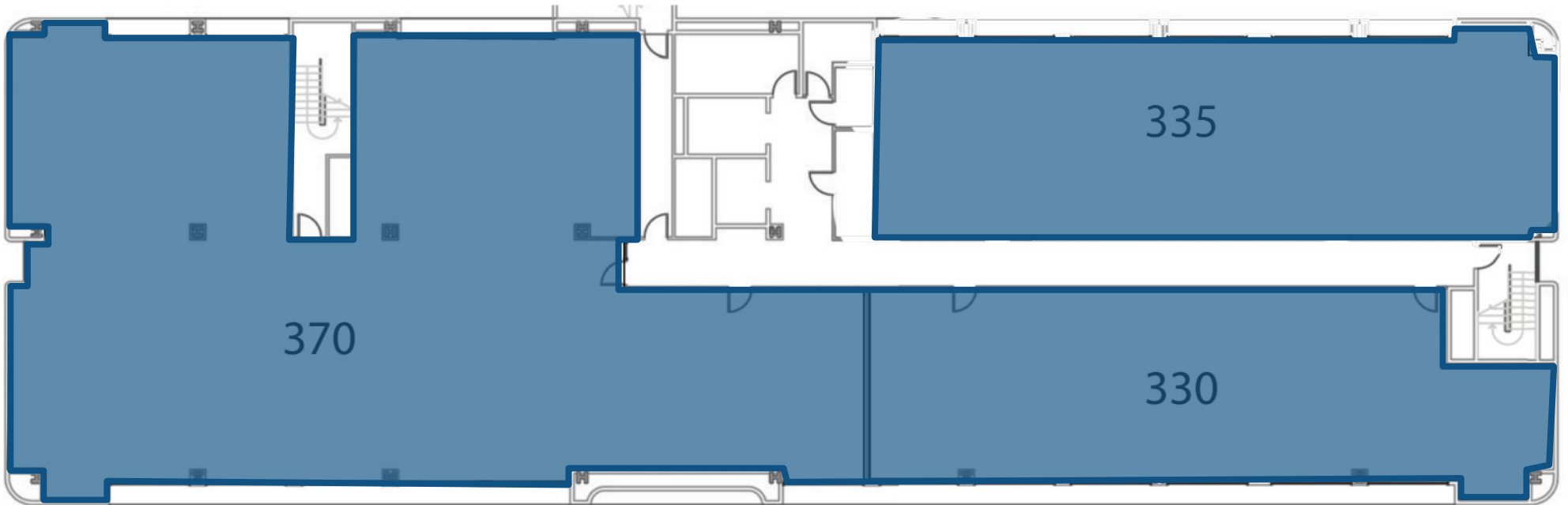
3,269 SF



# THIRD FLOOR

## AVAILABLE SUITES

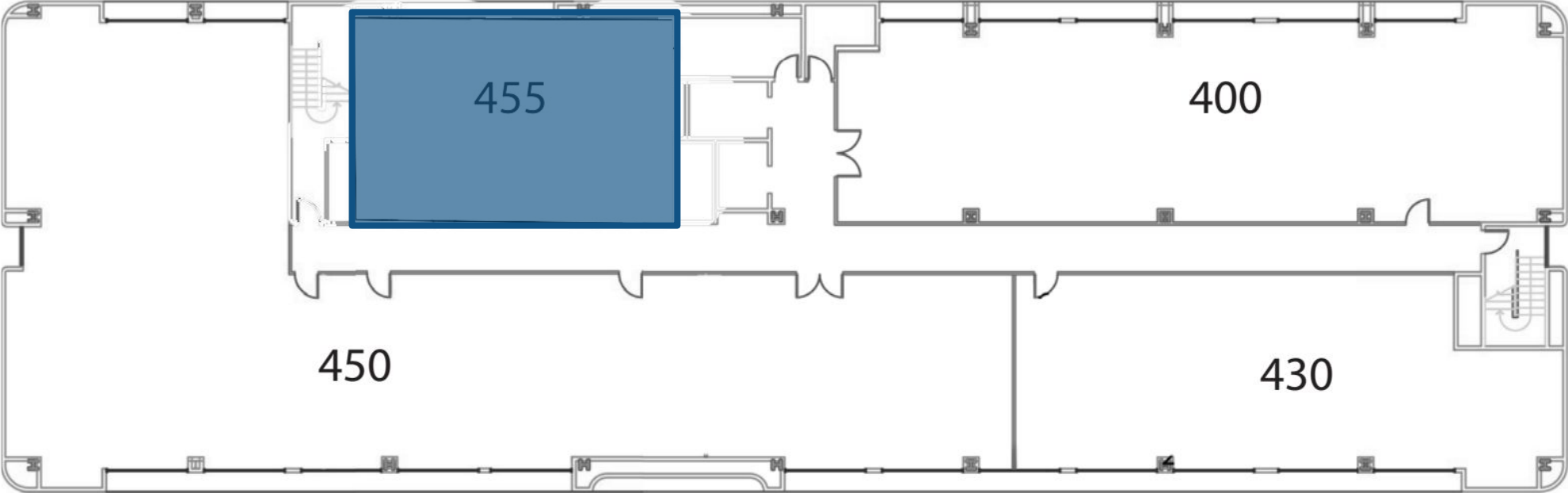
SUITE 335	2,456 SF
SUITES 330/370	7,836 SF



**FOURTH FLOOR**

**AVAILABLE SUITES**

SUITE 455	1,148 SF
-----------	----------



## SHADOW LANE MEDICAL PLAZA



## Your Golden Opportunity in Central Las Vegas

Leasing a medical office at Shadow Lane Medical Plaza means being a part of the Las Vegas Medical District (LVMD).

The LVMD is one of the most important economic development projects in Southern Nevada, enhancing and expanding access to quality medical care advancing a higher quality of life. The LVMD is a collaborative effort between the City of Las Vegas and its downtown medical community.

Shadow Lane Medical Plaza, indicated on the map below, offers your patients easy access from anywhere in the Las Vegas Valley and provides you, the tenant, with an affordable option to contribute to Las Vegas' medical future.





## HOSPITAL SERVICES



### **Behavioral Health**

#### **Cardiovascular**

- Chest Pain Center
- Angioplasty
- Cardiac catheterization
- Pacemaker/defibrillator implants
- Bi-ventricular implants
- Peripheral vascular interventions
- Cardiovascular surgery
- Intravascular Ultrasound

#### **Diabetes Treatment Center**

- Inpatient care

#### **Dialysis**

- Inpatient care

#### **Emergency Services**

- Urgent and emergency care 24/7
- Advanced primary stroke center

#### **Endoscopic Procedures**

#### **Laboratory Services**

#### **Oncology**

- Adult inpatient care
- Oncology Surgery

#### **Orthopedics**

#### **Radiology**

- Angiography
- CT scan
- MRI
- Nuclear Medicine
- X-ray

#### **Rehabilitation**

- Inpatient Physical Therapy
- Speech Therapy
- Occupational Therapy
- Short-term inpatient rehabilitation unit

#### **Respiratory Services**

#### **Surgery**

- Inpatient
- Outpatient
- Robotic

#### **Wound Care**

- Inpatient care
- Outpatient care
- Hyperbaric medicine