

PROPERTY DETAILS

Available:
Divisible 2nd Floor: ±11,352 RSF

Asking Rate: \$2.45 / SF FSG

- Excellent Bixby Knolls Location
- Quick 405 Freeway Access
- Abundant Surface and Structured Parking
- Prominent Monument Signage
- High Profile Ownership and Management Team in Place
- Good Views Along Atlantic
- Lots of Retail and Food Options Nearby

LOCAL EXPERTISE. INTERNATIONAL REACH. WORLD CLASS.

Jeff Coburn, CCIM, SIOR
Principal | Cal DRE# 01303169
P: +1(562) 354-2511
E: jcoburn@leelalb.com

Shaun McCullough, CCIM, SIOR
Principal | Cal DRE# 01380928
P: +1(562) 354-2517
E: smcullough@leelalb.com

Coleman Kistner
Associate | Cal DRE# 02198995
P: +1(562) 354-2535
E: ckistner@leelalb.com

Copyright © Lee & Associates. All rights reserved. No part of this work may be reproduced or distributed without written permission of the copyright owner. The information contained in this report was gathered by Lee & Associates from sources believed to be reliable. Lee & Associates, however, makes no representation concerning the accuracy or completeness of such information and expressly disclaims any responsibility for any inaccuracy contained herein.



LOCAL EXPERTISE. INTERNATIONAL REACH. WORLD CLASS.

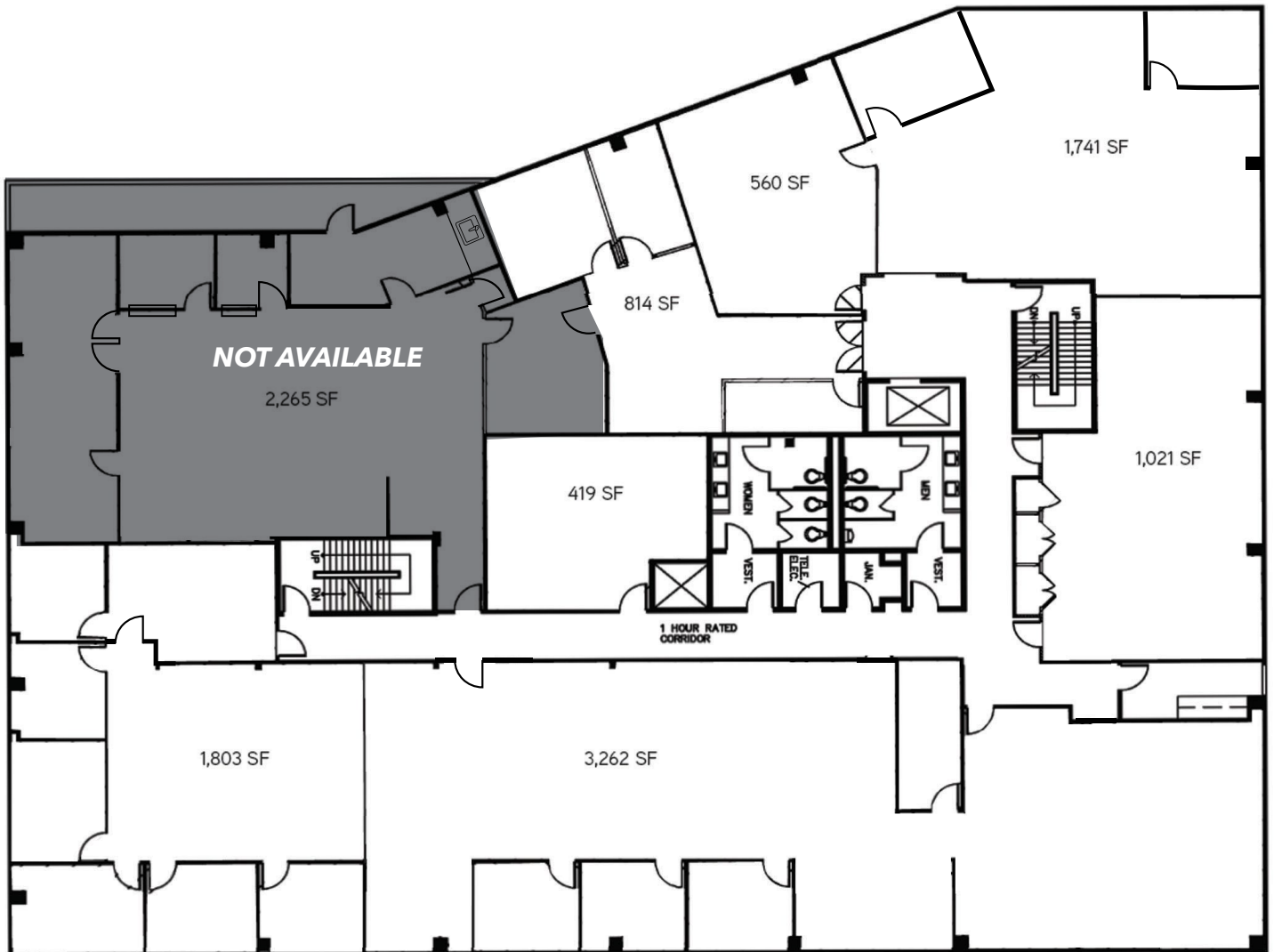
Jeff Coburn, CCIM, SIOR
Principal | Cal DRE# 01303169
P: +1(562) 354-2511
E: jcoburn@leelalb.com

Shaun McCullough, CCIM, SIOR
Principal | Cal DRE# 01380928
P: +1(562) 354-2517
E: smcullough@leelalb.com

Coleman Kistner
Associate | Cal DRE# 02198995
P: +1(562) 354-2535
E: ckistner@leelalb.com

Copyright © Lee & Associates. All rights reserved. No part of this work may be reproduced or distributed without written permission of the copyright owner. The information contained in this report was gathered by Lee & Associates from sources believed to be reliable. Lee & Associates, however, makes no representation concerning the accuracy or completeness of such information and expressly disclaims any responsibility for any inaccuracy contained herein.

FLOOR PLAN - 2ND FLOOR SPACE (NOT TO SCALE)



LOCAL EXPERTISE. INTERNATIONAL REACH. WORLD CLASS.

Jeff Coburn, CCIM, SIOR
Principal | Cal DRE# 01303169
P: +1(562) 354-2511
E: jcoburn@leelalb.com

Shaun McCullough, CCIM, SIOR
Principal | Cal DRE# 01380928
P: +1(562) 354-2517
E: smccullough@leelalb.com

Coleman Kistner
Associate | Cal DRE# 02198995
P: +1(562) 354-2535
E: ckistner@leelalb.com

Copyright © Lee & Associates. All rights reserved. No part of this work may be reproduced or distributed without written permission of the copyright owner. The information contained in this report was gathered by Lee & Associates from sources believed to be reliable. Lee & Associates, however, makes no representation concerning the accuracy or completeness of such information and expressly disclaims any responsibility for any inaccuracy contained herein.