

LAKEVILLE TOWN OFFICES II

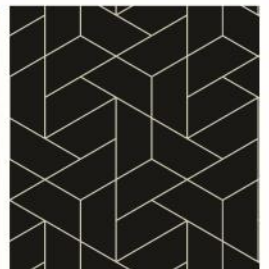
10523-27 165TH STREET WEST, LAKEVILLE, MN 55044

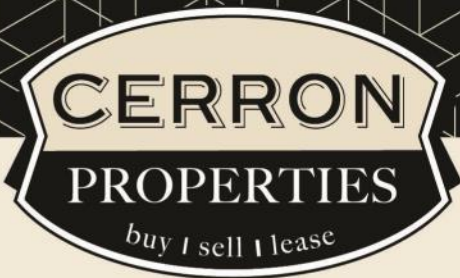


FOR LEASE | OFFICE



CERRON Commercial Properties, LLC | 21476 Grenada Avenue | Lakeville, MN 55044
WWW.CERRON.COM





LAKEVILLE TOWN OFFICES II

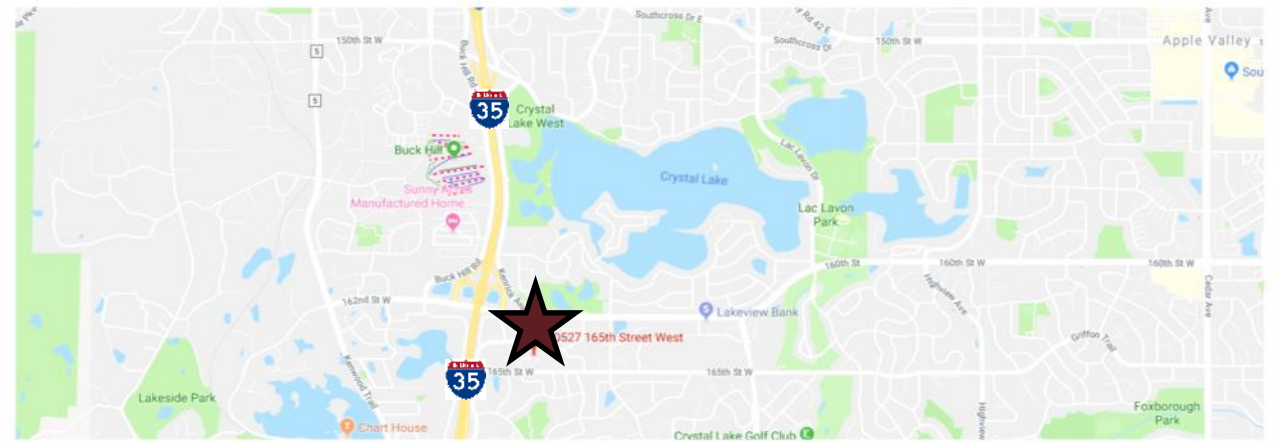
10523-27 165TH STREET WEST, LAKEVILLE, MN 55044

FOR LEASE | PROFESSIONAL OFFICE

CERRON Commercial Properties, LLC
21476 Grenada Avenue
Lakeville, MN 55044
www.CERRON.com

■ PROPERTY HIGHLIGHTS

- 1,593—4,186 SF of beautiful office space available
- Multiple options available
- Large windows and lower level outdoor access, as well as main level access
- Excellent location with quick access to I-35 & near many restaurant, hotel and shopping options
- Ample Parking
- Competitive Lease Rates—see summary on page 3



DISCLAIMER: The information contained herein is deemed reliable but is not guaranteed. We have not verified its accuracy nor do we make any warranty or representation about it. You and your tax and legal advisors should conduct your own investigation of the property and transaction.

For more information,
please contact:
Rocky Ranch
952.583.6135
rockyr@cerron.com



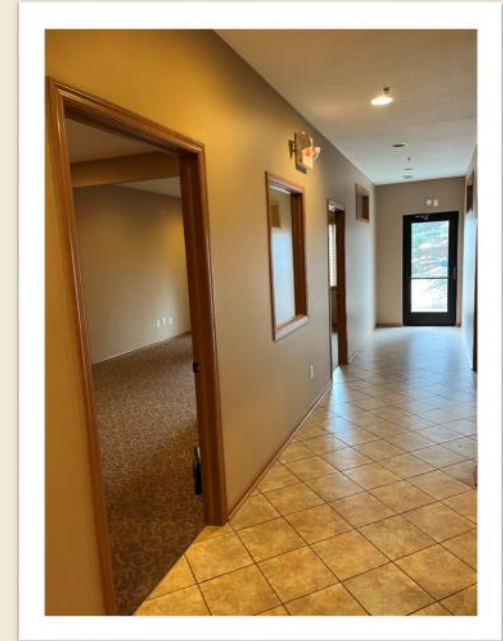
For more information,
please contact:
Bruce Rydeen
952.469.9444
brucer@cerron.com



RENT SUMMARY

LAKEVILLE TOWN OFFICES II
10523-27 165TH STREET WEST, LAKEVILLE, MN 55044

	OPTION A	OPTION B
SUITE	10527	10527
SIZE & FLOOR	MAIN—1,593 SF MEZZ—1,000 SF TOTAL: 2,593 SF	LOWER LEVEL SINGLE SIDE—1,593 SF
LEASE AMOUNT	\$3,995/Month (plus \$1.05/sf utility charge)	\$1,655/Month (plus \$1.05/sf utility charge)



DISCLAIMER: The information contained herein is deemed reliable but is not guaranteed. We have not verified its accuracy nor do we make any warranty or representation about it. You and your tax and legal advisors should conduct your own investigation of the property and transaction.

For more information,
please contact:
Rocky Ranch
952.583.6135
rockyr@cerron.com

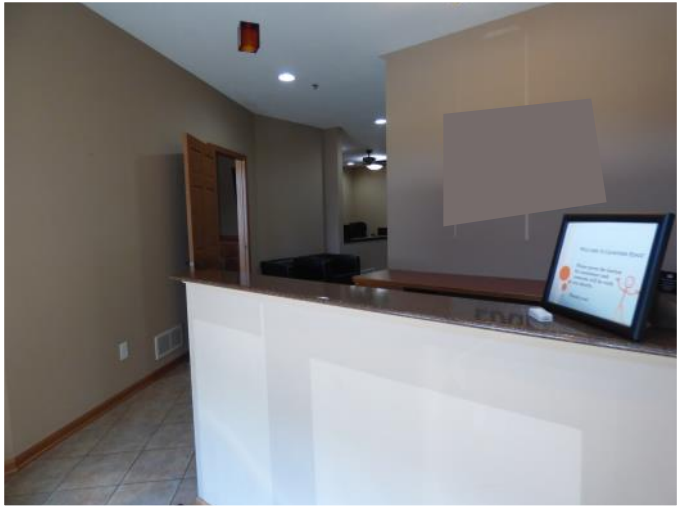


For more information,
please contact:
Bruce Rydeen
952.469.9444
brucer@cerron.com

LAKEVILLE TOWN OFFICES II

10523-27 165TH STREET WEST, LAKEVILLE, MN 55044

MAIN & MEZZ PHOTOS



DISCLAIMER: The information contained herein is deemed reliable but is not guaranteed. We have not verified its accuracy nor do we make any warranty or representation about it. You and your tax and legal advisors should conduct your own investigation of the property and transaction.

For more information,
please contact:
Rocky Ranch
952.583.6135
rockyr@cerron.com

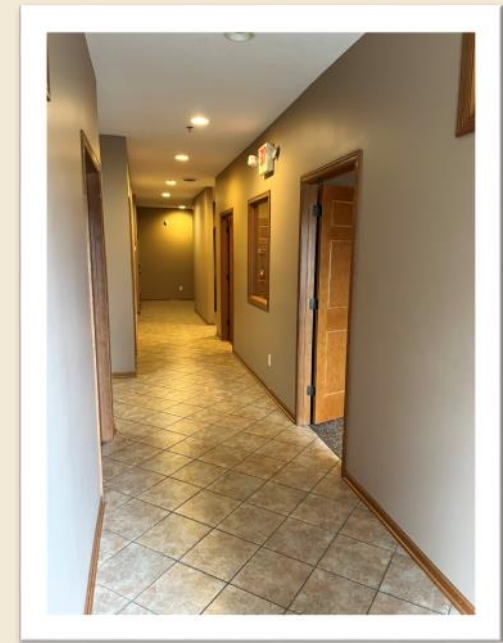
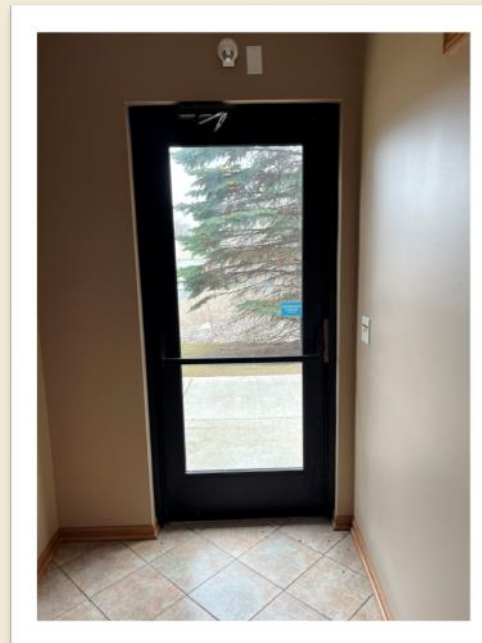
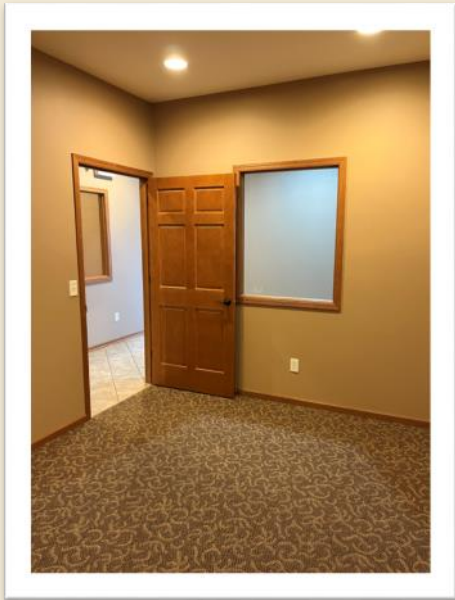


For more information,
please contact:
Bruce Rydeen
952.469.9444
brucer@cerron.com

LAKEVILLE TOWN OFFICES II

10523-27 165TH STREET WEST, LAKEVILLE, MN 55044

LOWER LEVEL PHOTOS



DISCLAIMER: The information contained herein is deemed reliable but is not guaranteed. We have not verified its accuracy nor do we make any warranty or representation about it. You and your tax and legal advisors should conduct your own investigation of the property and transaction.

For more information,
please contact:
Rocky Ranch
952.583.6135
rockyr@cerron.com



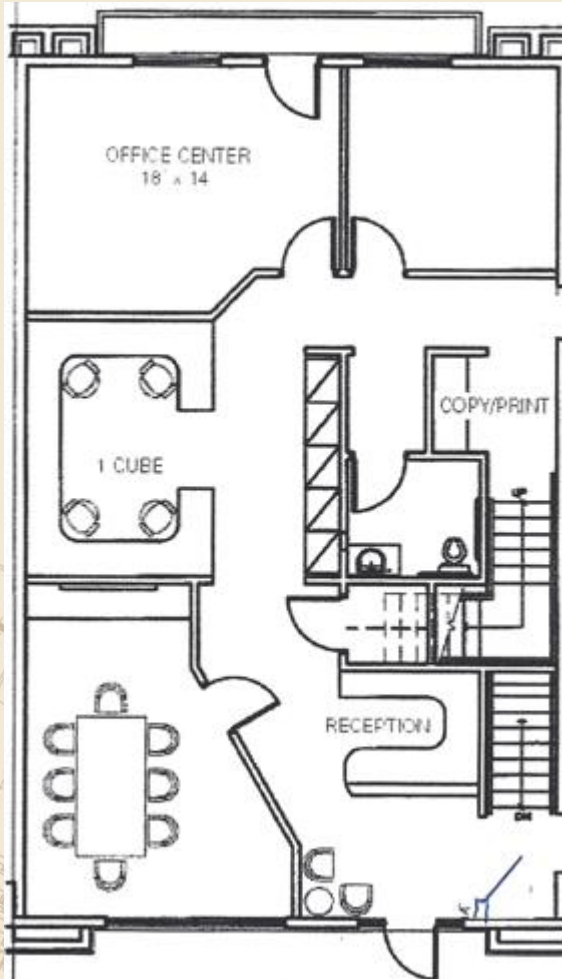
For more information,
please contact:
Bruce Rydeen
952.469.9444
brucer@cerron.com

LAKEVILLE TOWN OFFICES II

10523-27 165TH STREET WEST, LAKEVILLE, MN 55044

MAIN/MEZZ FLOOR PLANS

10527—MAIN LEVEL

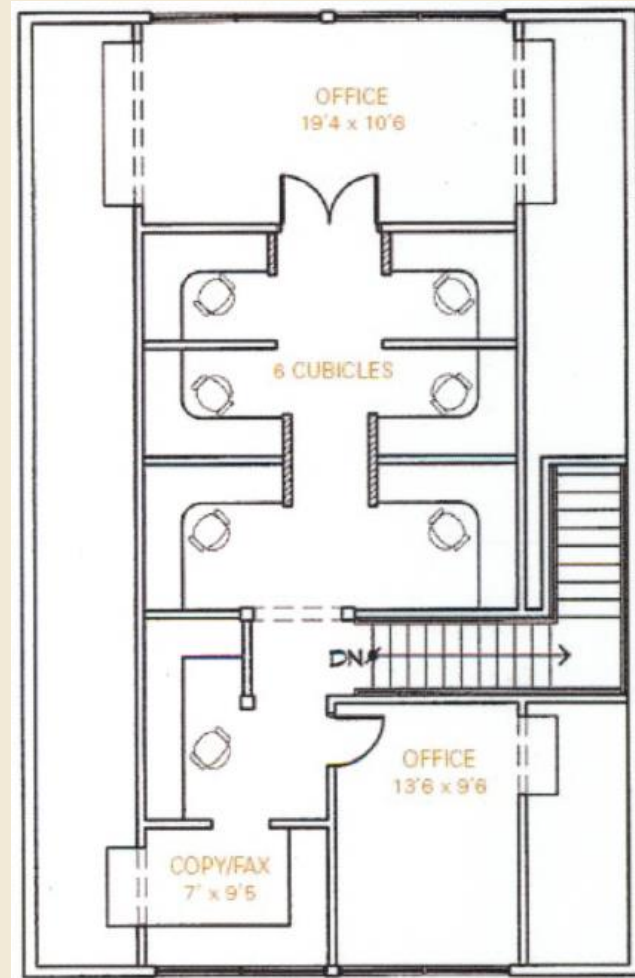


MAIN LEVEL—
APPROX. 1,593 SF

MEZZANINE—
APPROX. 1,000 SF

TOTAL—
APPROX. 2,593 SF

10527—MEZZANINE



DISCLAIMER: The information contained herein is deemed reliable but is not guaranteed. We have not verified its accuracy nor do we make any warranty or representation about it. You and your tax and legal advisors should conduct your own investigation of the property and transaction.

For more information,
please contact:

Rocky Ranch
952.583.6135
rockyr@cerron.com



For more information,
please contact:

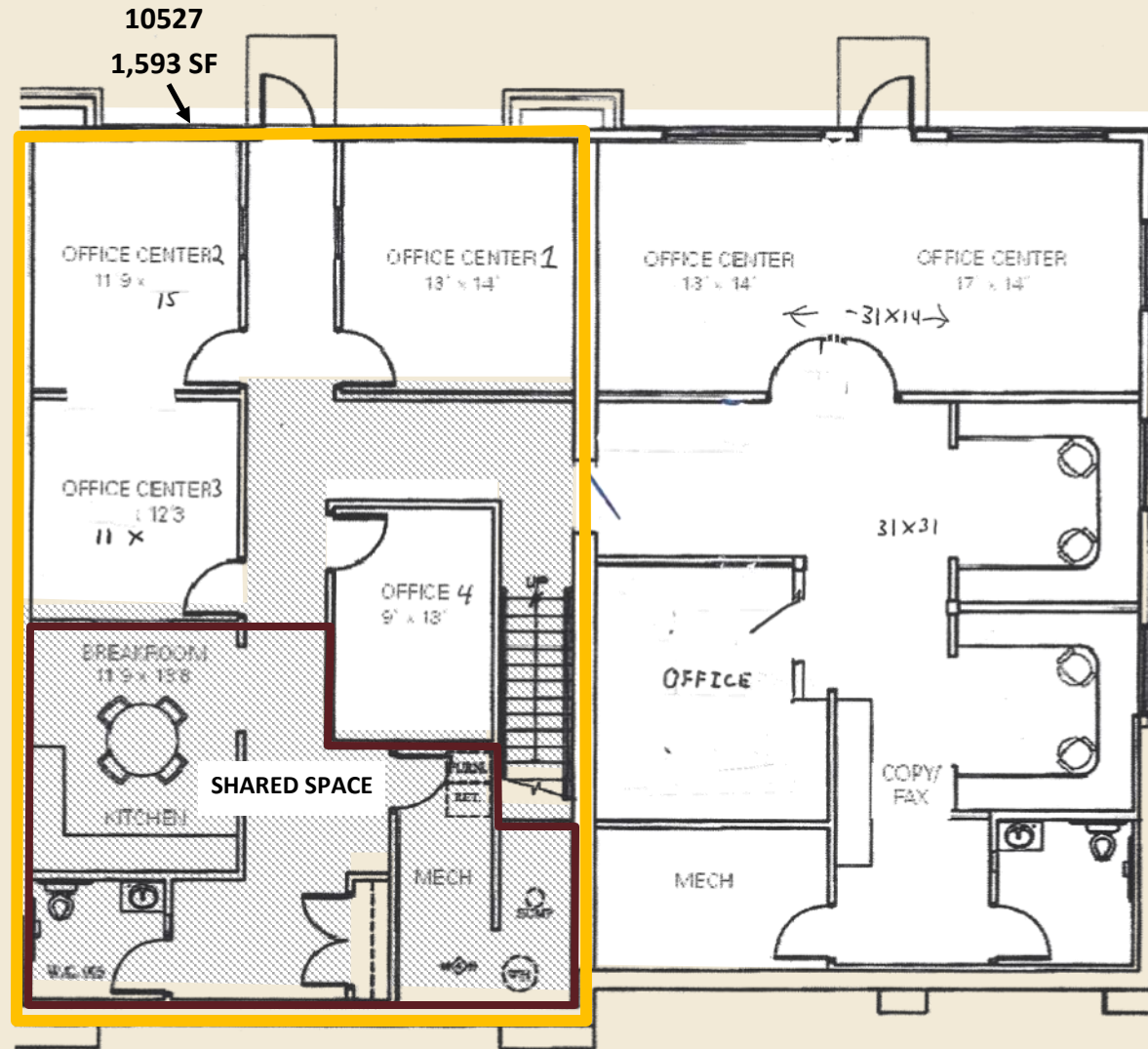
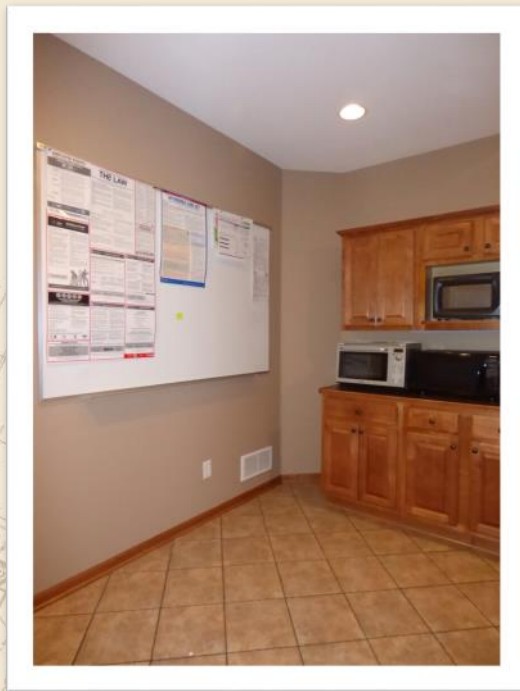
Bruce Rydeen
952.469.9444
brucer@cerron.com

LAKEVILLE TOWN OFFICES II

10523-27 165TH STREET WEST, LAKEVILLE, MN 55044

LOWER LEVEL FLOOR PLAN

The lower level has approx. 1,593 SF available with access to a shared kitchenette, restroom, and utility room access.



DISCLAIMER: The information contained herein is deemed reliable but is not guaranteed. We have not verified its accuracy nor do we make any warranty or representation about it. You and your tax and legal advisors should conduct your own investigation of the property and transaction.

For more information,
please contact:
Rocky Ranch
952.583.6135
rockyr@cerron.com



For more information,
please contact:
Bruce Rydeen
952.469.9444
brucer@cerron.com

let's get started!

Bruce Rydeen | 952.469.9444 | brucer@cerron.com

CERRON Commercial Properties, LLC | 21476 Grenada Avenue | Lakeville, MN 55044

Rocky Ranch | 952.583.6135 | rockyr@cerron.com



WWW.CERRON.COM