

For Lease

2529 N San Fernando Rd Los Angeles | CA



Presented By:

Scott Cox
818.244.3000

scott@pacwestonline.com

DRE#01070703

Randy Rohrer
818.244.3000

randy@pacwestonline.com

DRE#00672287

Ron Rohrer
818.309.0628

ron@pacwestonline.com

DRE#01918399

Chris Rohrer
818.624.1180

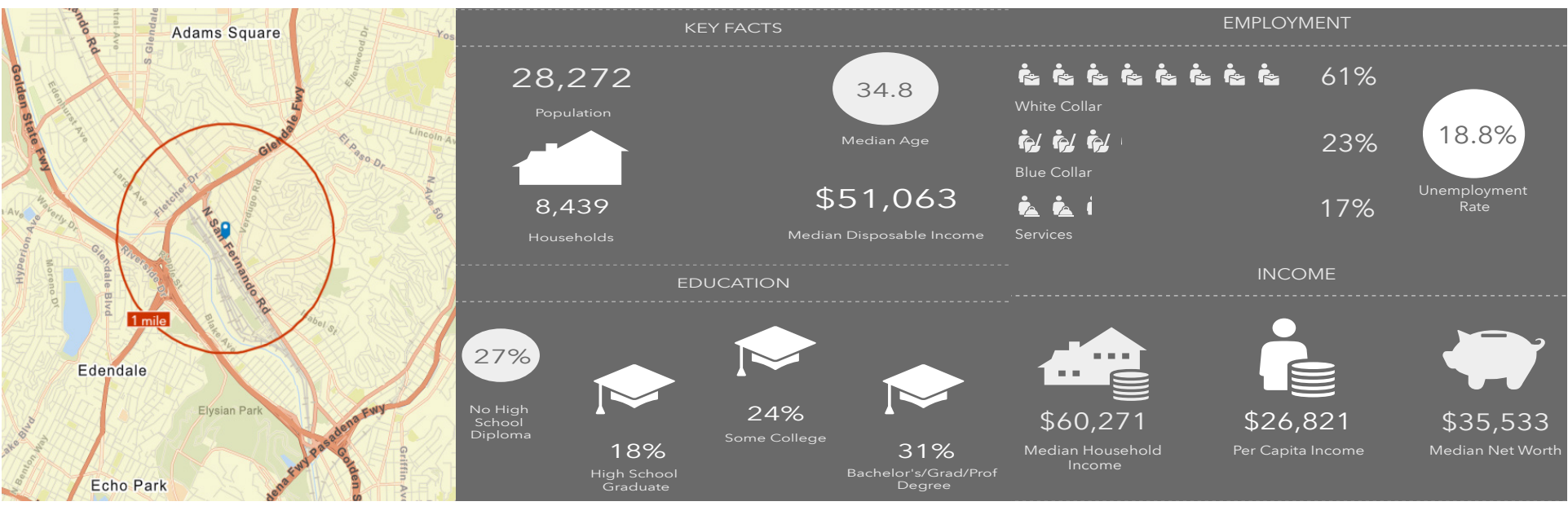
chris@pacwestonline.com

DRE#02018754



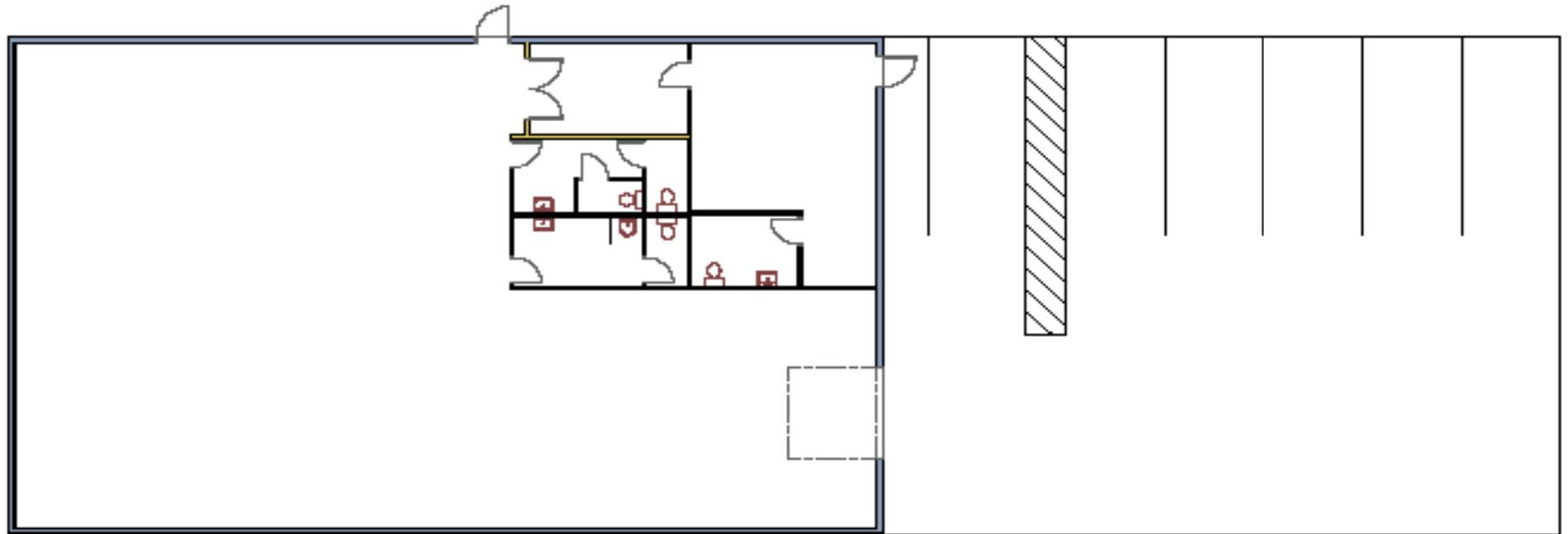
Property Information

Available SF:	4,000 SF	› Completely renovated in 2017
Asking Price:	\$11,000 (\$2.75/sf)	› Gated yard & access
Land SF:	± 7,000 SF	› 14' minimum clearance
Zoning:	M1	› Close to 2 & 5 freeways
Parking:	6 (Gated)	› Polished floors
Year Built:	1967 2017	› Sky lights
Power	400 A; 240 V; 3 Ph	› Bow truss cieling



The facts contained herein, while not guaranteed as to accuracy, are accurate to the best of our knowledge and belief.

Floor Plan



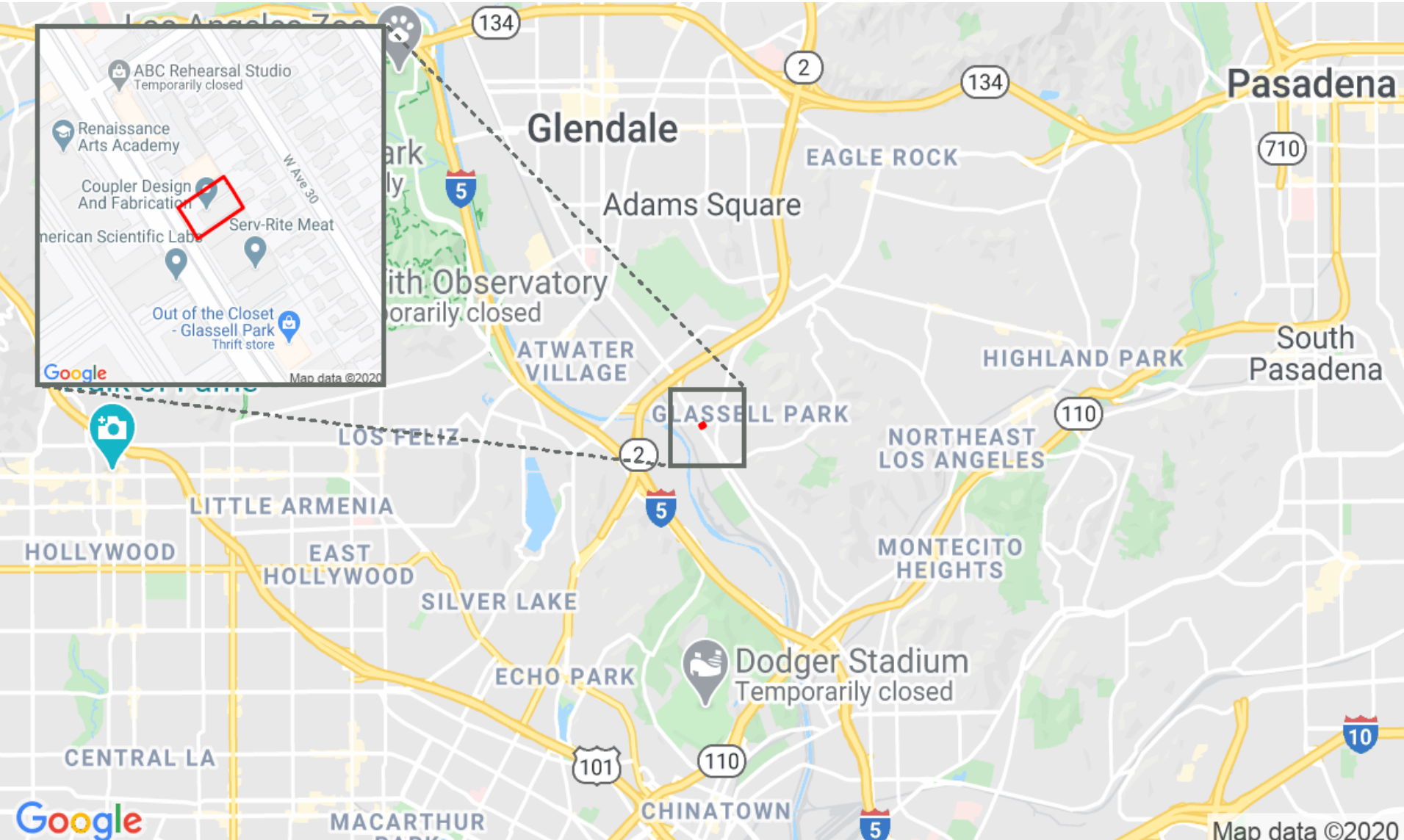
Map Location



2529 N SAN FERNANDO RD

Pacific West Business Properties, Inc.

6624 San Fernando Road Glendale, CA 91201 | 818-244-3000



Pictures

