



Lake Wales Commercial Portfolio

137 Hwy 60, Lake Wales, Florida 33853

Linda Schultz
386-479-8420
linda@saundersrealestate.com

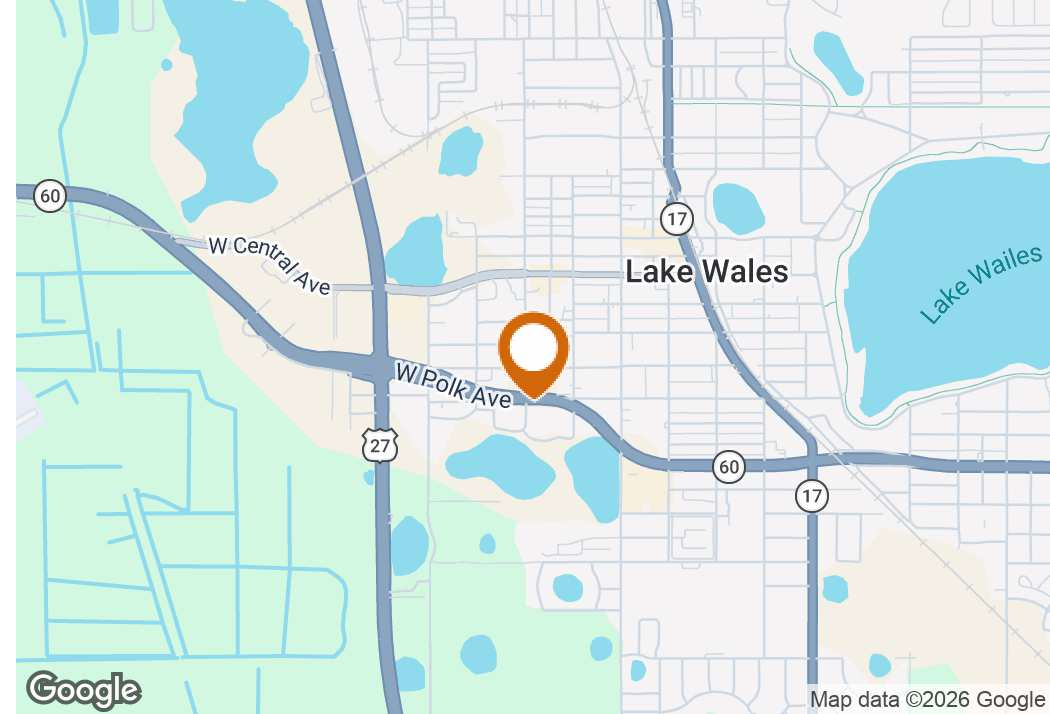
TABLE OF CONTENTS



Table of Contents

Property Summary	3
Location Information	4
Regional Map	5
Location Map	6
Demographics Map & Report	7
Aerial Map	8
Maps And Photos	9
Retailer Map	10
Additional Photos	11
Agent And Company Info	12
Advisor Biography	13

PROPERTY SUMMARY



Offering Summary

Sale Price:	\$525,000
Addresses:	131 Hwy 60, Lake Wales 137 Hwy 60, Lake Wales 411 Walker St, Lake Wales
APN:	273002903500013501 273002903500013401 273002903500013502
Lot Size:	0.88 ± Acres
Total SF:	6,357 ± SF
Zoning:	Professional (PF) City of Lake Wales
Traffic Count:	27,000 ± Cars/Day (W Polk Ave)
Future Land Use:	Residential Office (RO) City of Lake Wales

Property Overview

Three contiguous parcels totaling 0.88 ± acres are now available along high-visibility Highway 60 in the heart of Lake Wales. Zoned Professional, this site boasts 200 ± feet of frontage and offers ideal exposure for offices, medical, or professional services. Located directly across from the newly reconstructed MIDFLORIDA Credit Union, the property benefits from strong area traffic and established neighboring businesses. With right-in, right-out access and exceptional visibility, this is a rare opportunity for developers or investors seeking a standout location with immediate curb appeal and long-term growth potential.

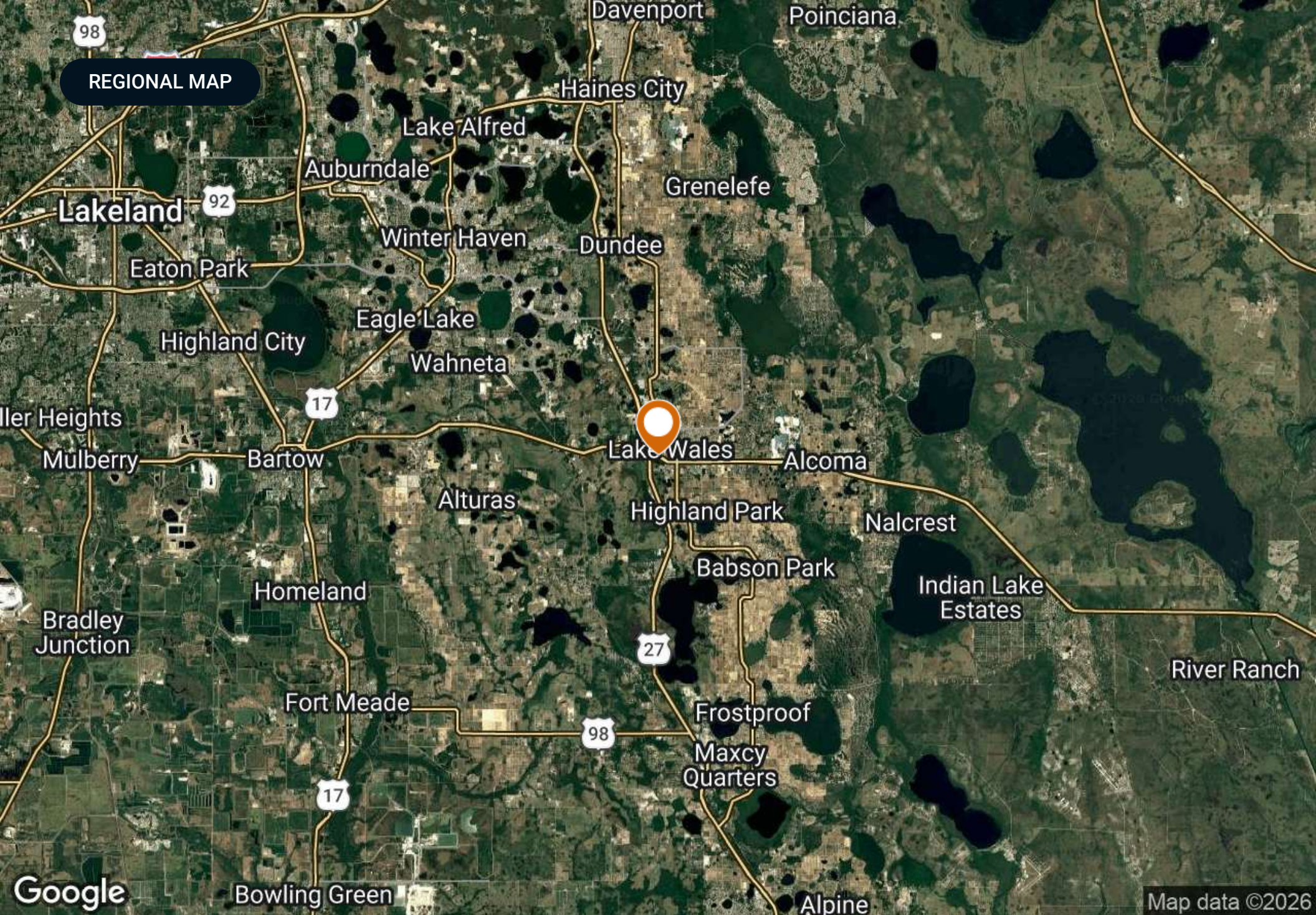
Property Highlights

- Proximity to major thoroughfares
- Excellent frontage and visibility on SR 60 (W Polk Ave)
- Perfect for professional users



SECTION 1

Location Information



REGIONAL MAP

98

92

17

27

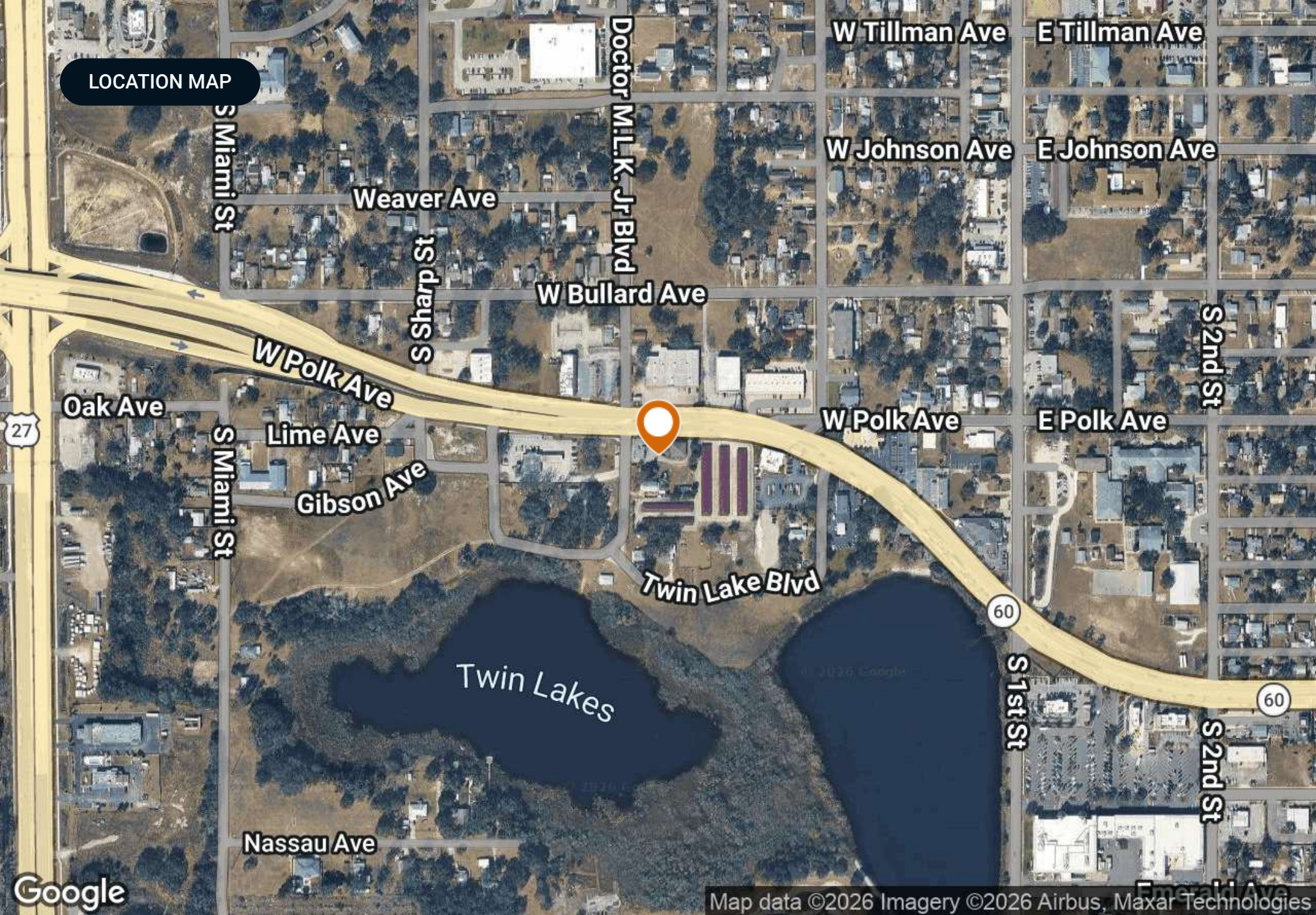
98

17

Google

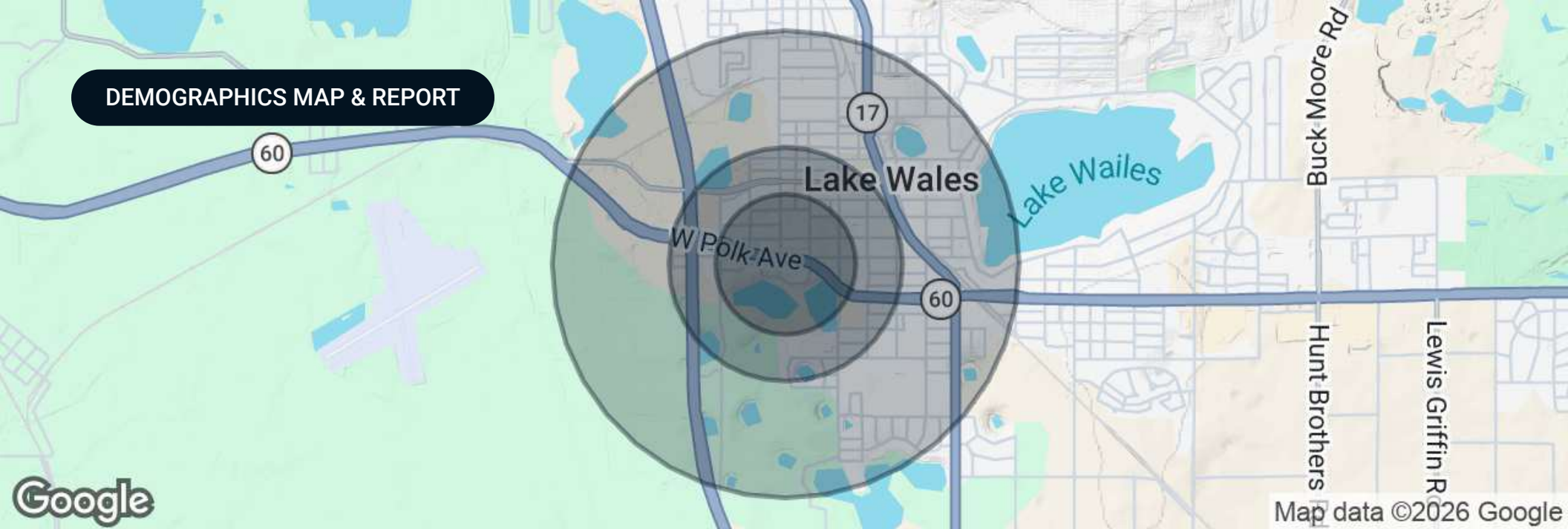
Map data ©2026

LOCATION MAP



Map data ©2026 Imagery ©2026 Airbus, Maxar Technologies

DEMOGRAPHICS MAP & REPORT



Population

	0.3 Miles	0.5 Miles	1 Mile
Total Population	169	753	2,238
Average Age	40	44	45
Average Age (Male)	39	43	45
Average Age (Female)	41	44	46

Households & Income

	0.3 Miles	0.5 Miles	1 Mile
Total Households	72	343	1,041
# of Persons per HH	2.3	2.2	2.1
Average HH Income	\$65,195	\$71,887	\$74,998
Average House Value	\$209,074	\$224,970	\$232,640

Demographics data derived from AlphaMap

AERIAL MAP





SECTION 2

Maps And Photos

RETAILER MAP



SOUTH STATE BANK

WELLS FARGO

BEEF O'BRADY'S
GOOD FOOD. GOOD SPORTS.

WOODY'S Bar-B-Q

McDonald's

TRUIST

KFC

Advance Auto Parts

MIDFLORIDA

DUNKIN' DONUTS **BEALLS Publix.**

Citizens Bank

ADDITIONAL PHOTOS





SECTION 3

Agent And Company Info

ADVISOR BIOGRAPHY



Linda Schultz

Advisor

linda@saundersrealestate.com

Direct: **877-518-5263 x417** | Cell: **386-479-8420**

Professional Background

Linda Schultz is an Advisor at Saunders Real Estate.

Linda's educational background includes studying Business Law at Charles University in Prague, Czech Republic, earning a Juris Doctor from Nova Southeastern University, and a Bachelor of Arts in Criminology from the University of Florida.

In addition to Linda's impressive educational background, she is also a Florida Bar Attorney. Her legal training and professional experience provide her with a deep understanding of the legal aspects of the real estate industry, enabling her to better serve her clients.

As the leasing specialist at Saunders Real Estate Linda played a critical role in filling Christina Commons, achieving a 100% occupancy rate. By doing so, she was able to increase the cap rate and marketability of the property, positioning it for a successful sale.

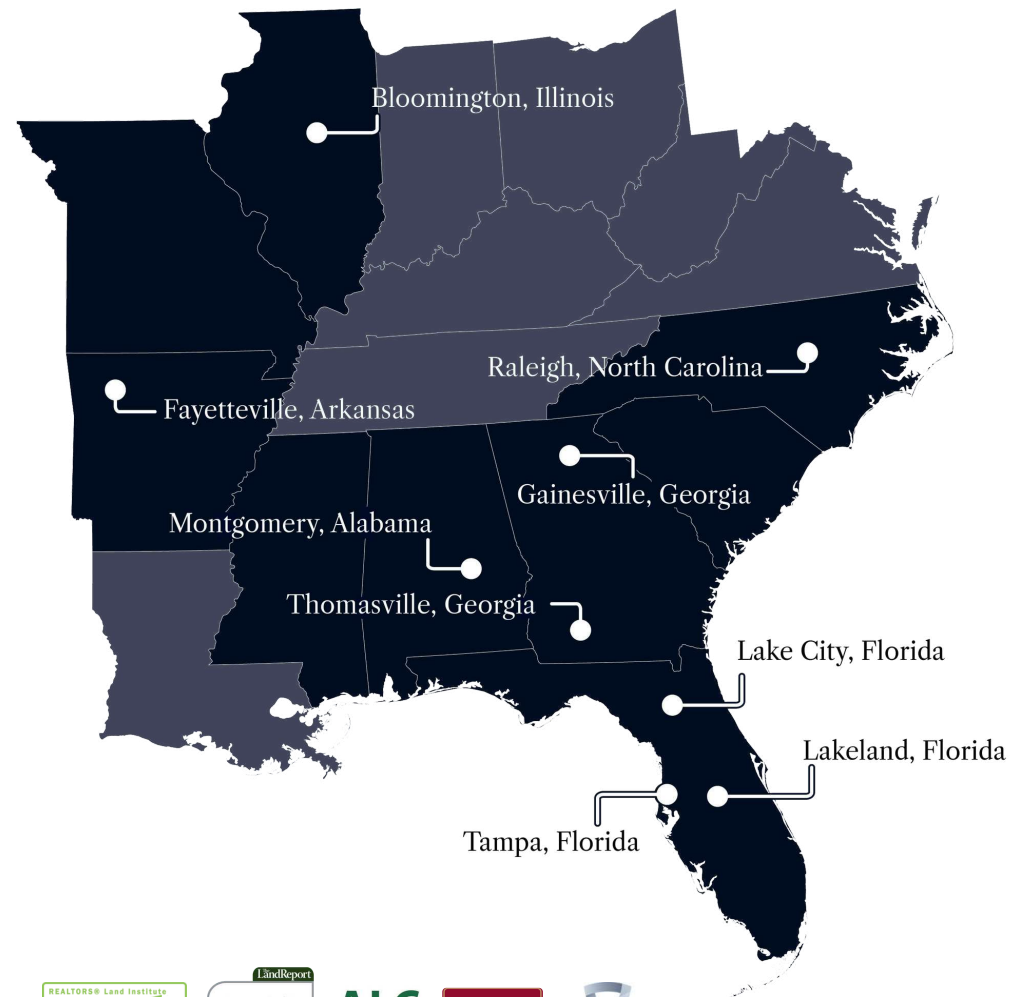
Today, Linda is focused on representing sellers and buyers of all commercial properties. Her attention to detail, exceptional negotiation skills, and her ability to understand her clients' needs make her an invaluable asset to her clients. Outside of her professional career, Linda is an active member of Variety, the Children's Charity of Florida, and resides in Lakeland, Florida.

Linda specializes in:

- Office
- Industrial
- Retail



At Saunders Real Estate, we deliver full-service real estate solutions, built on more than 30 years of trusted experience. Our dedicated teams offer tailored guidance backed by deep regional insight and a proven track record. We believe that successful outcomes start with strong relationships built on trust and a shared commitment to your goals.



877-518-5263 • info@saundersrealestate.com



©2026 Saunders Real Estate, LLC. All rights reserved. The information contained in this communication is strictly confidential. This information has been obtained from sources believed to be reliable but has not been verified. NO WARRANTY OR REPRESENTATION, EXPRESS OR IMPLIED, IS MADE AS TO THE CONDITION OF THE PROPERTY (OR PROPERTIES) REFERENCED HEREIN OR AS TO THE ACCURACY OR COMPLETENESS OF THE INFORMATION CONTAINED HEREIN, AND SAME IS SUBMITTED SUBJECT TO ERRORS, OMISSIONS, CHANGE OF PRICE, RENTAL OR OTHER CONDITIONS, WITHDRAWAL WITHOUT NOTICE, AND TO ANY SPECIAL LISTING CONDITIONS IMPOSED BY THE PROPERTY OWNER(S). ANY PROJECTIONS, OPINIONS OR ESTIMATES ARE SUBJECT TO UNCERTAINTY AND DO NOT SIGNIFY CURRENT OR FUTURE PROPERTY PERFORMANCE.