

1800 WILSON WAY

SMYRNA, GA 30082

For Lease
4,700 - 36,077± SF
Office / Warehouse Space

ROBERT GRAHAM

Vice President
404.942.2051
rgraham@kingindustrial.com

ED SMITH, CCIM

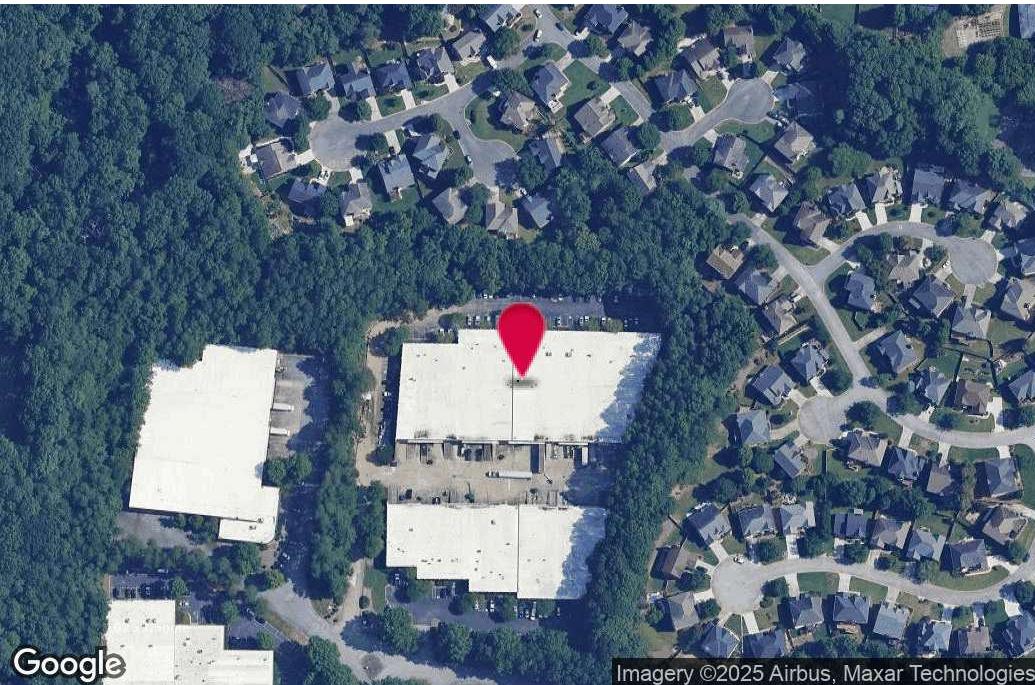
Vice President
404.942.2082
esmith@kingindustrial.com

king *Industrial
Realty, Inc.*

Industrial • Commercial • Investment
404.942.2000 | kingindustrial.com



FOR LEASE
4,700 - 36,077± SF
OFFICE / WAREHOUSE
SPACE



PROPERTY HIGHLIGHTS

- **Suite 1801:** 10,234± SF with 3,010± SF Office
- 1 Dock High Door & 1 Drive In Door
- **Suite 1802:** 9,638± SF with 2,194± SF Office
- 2 Dock High Doors & 1 Drive In Door
- Suites 1801 & 1802 can be combined for a total of 19,872 SF
- **Suite 1807:** 5,425± SF with 628± SF Office
- 2 Dock High Doors
- **Suite 1808:** 6,080 with 2,138± SF Office
- 2 Dock High Doors
- **Suite 1809:** 4,700± SF with 655± SF Office
- 2 Dock High Doors

BUILDING SUMMARY

Lot Size:	7.85 Acres
Building Size:	69,995 SF

ROBERT GRAHAM

Vice President

404.942.2051

rgraham@kingindustrial.com

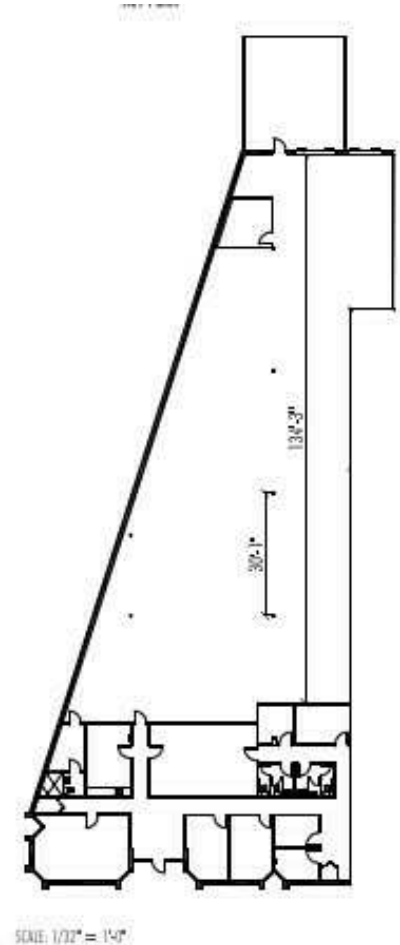
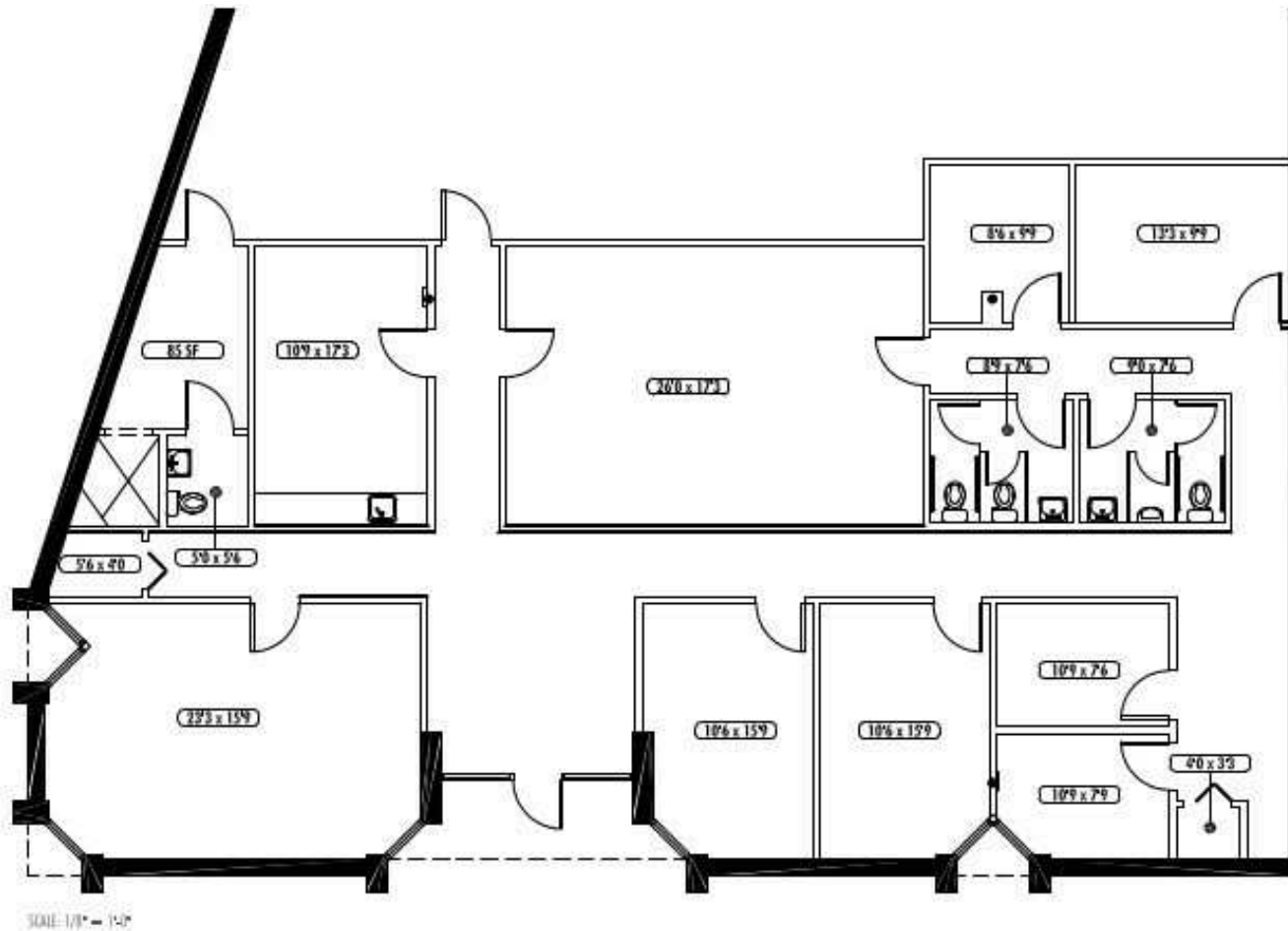
ED SMITH, CCIM

Vice President

404.942.2082

esmith@kingindustrial.com

SUITE 1801 FLOOR PLAN



ROBERT GRAHAM

Vice President

404.942.2051

rgraham@kingindustrial.com

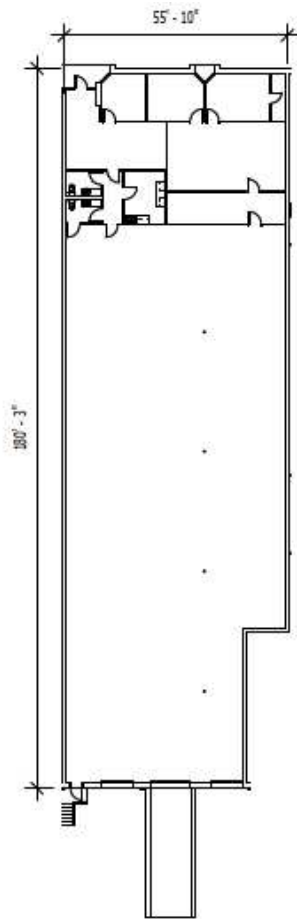
ED SMITH, CCIM

Vice President

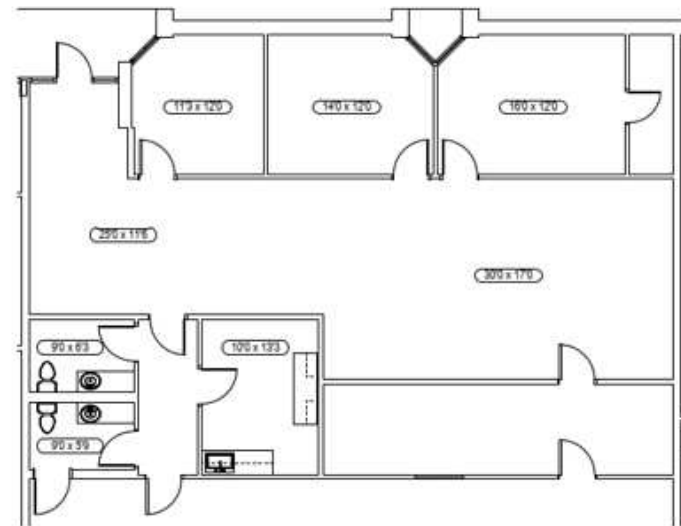
404.942.2082

esmith@kingindustrial.com

SUITE 1802 FLOOR PLAN



SUITE PLAN



OFFICE PLAN

ROBERT GRAHAM

Vice President

404.942.2051

rgraham@kingindustrial.com

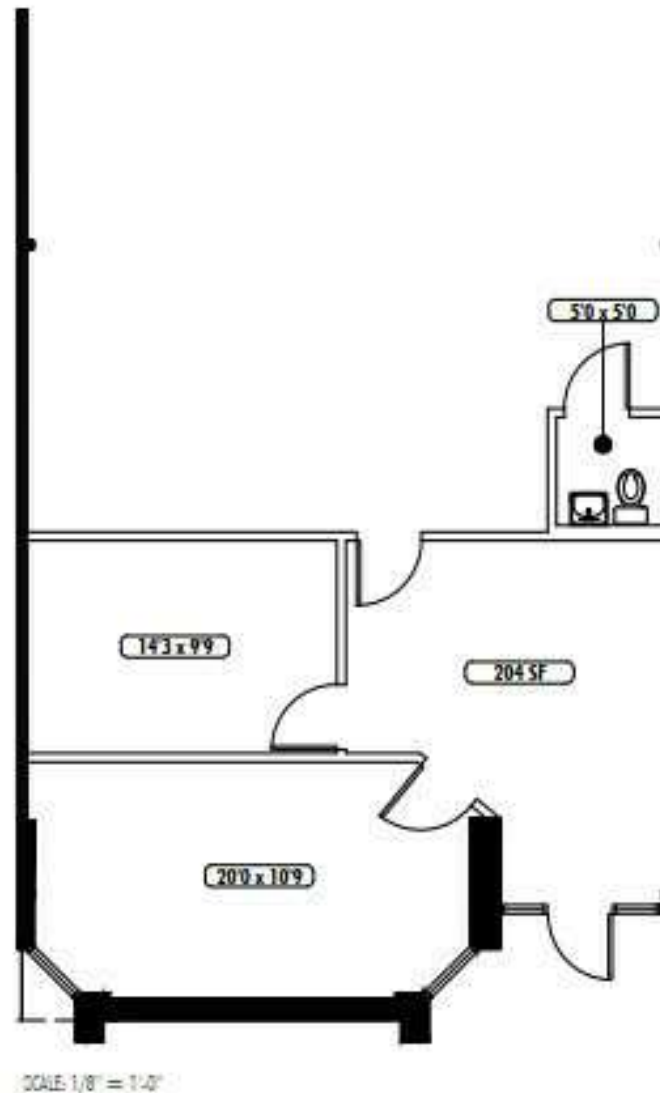
ED SMITH, CCIM

Vice President

404.942.2082

esmith@kingindustrial.com

SUITE 1807 FLOOR PLAN



ROBERT GRAHAM

Vice President

404.942.2051

rgraham@kingindustrial.com

ED SMITH, CCIM

Vice President

404.942.2082

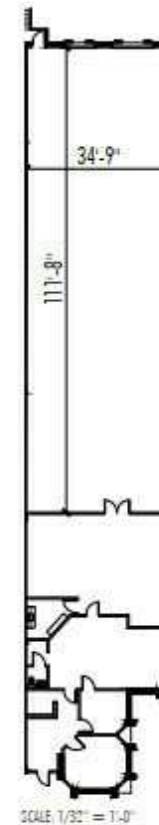
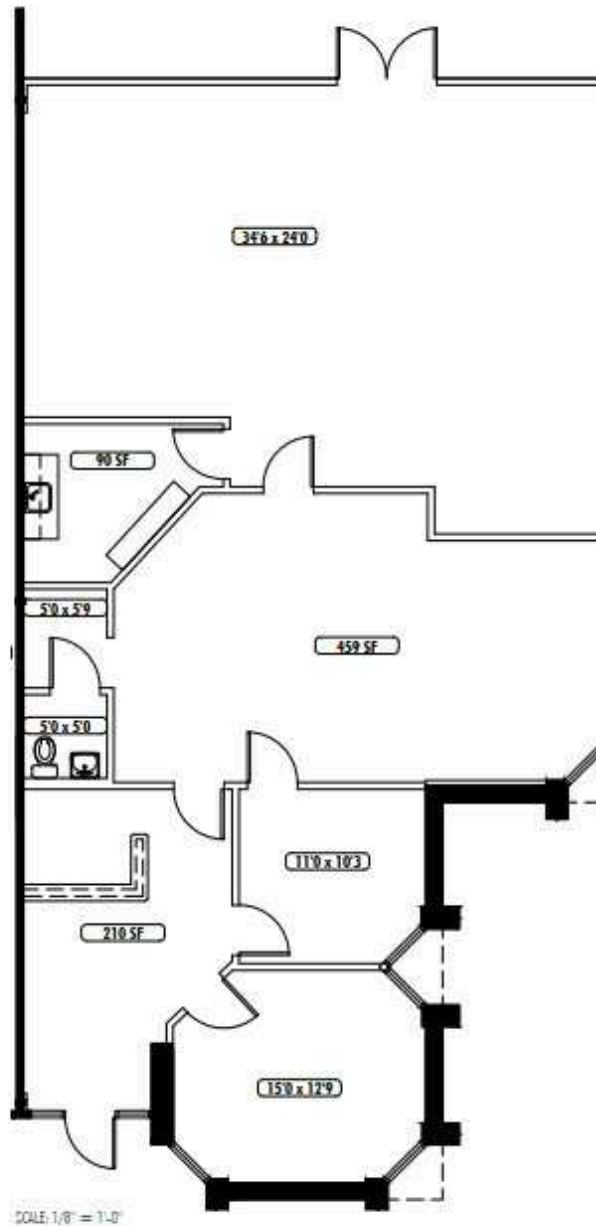
esmith@kingindustrial.com

Every effort has been made to provide accurate information, but no liability is assumed for errors or omissions.

king Industrial Realty, Inc. **CORFAC** INTERNATIONAL

Industrial • Commercial • Investment
404.942.2000 | kingindustrial.com

SUITE 1808 FLOOR PLAN



ROBERT GRAHAM

Vice President

404.942.2051

rgraham@kingindustrial.com

ED SMITH, CCIM

Vice President

404.942.2082

esmith@kingindustrial.com

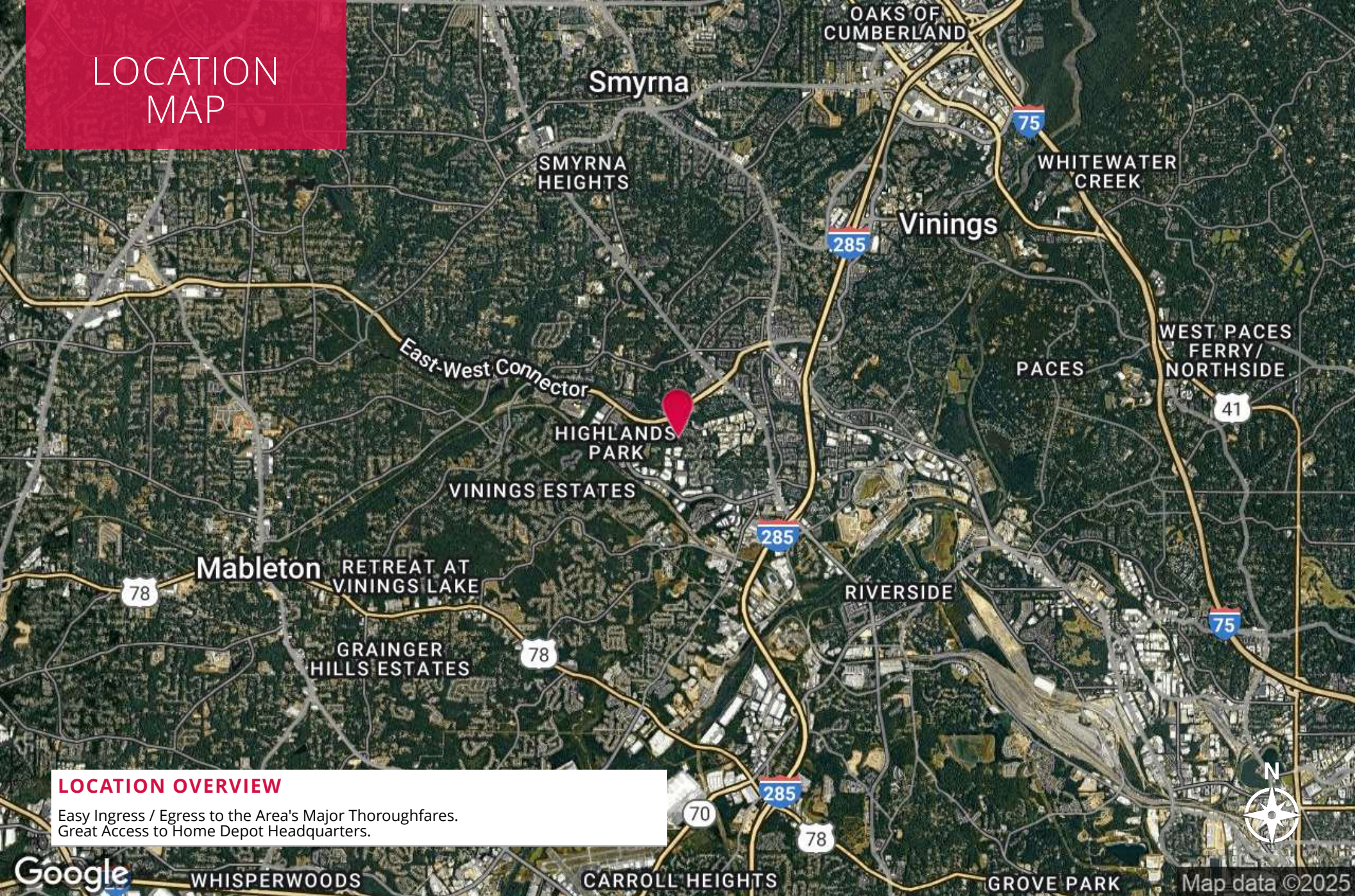
Every effort has been made to provide accurate information, but no liability is assumed for errors or omissions.

king Industrial
Realty, Inc.

CORFAC
INTERNATIONAL

Industrial • Commercial • Investment
404.942.2000 | kingindustrial.com

LOCATION MAP



LOCATION OVERVIEW

Easy Ingress / Egress to the Area's Major Thoroughfares.
Great Access to Home Depot Headquarters.

ROBERT GRAHAM

Vice President

404.942.2051

rgraham@kingindustrial.com

ED SMITH, CCIM

Vice President

404.942.2082

esmith@kingindustrial.com



Industrial • Commercial • Investment
404.942.2000 | kingindustrial.com

EXCLUSIVELY LISTED BY:

ROBERT GRAHAM

Vice President
rgraham@kingindustrial.com
404.942.2051

ED SMITH, CCIM

Vice President
esmith@kingindustrial.com
404.942.2082

King Industrial
Realty, Inc.

Industrial • Commercial • Investment
404.942.2000 | kingindustrial.com