

ASK KAY INDUSTRIAL PARK

2970 - 2976 ASK KAY DR, SMYRNA, GA 30082



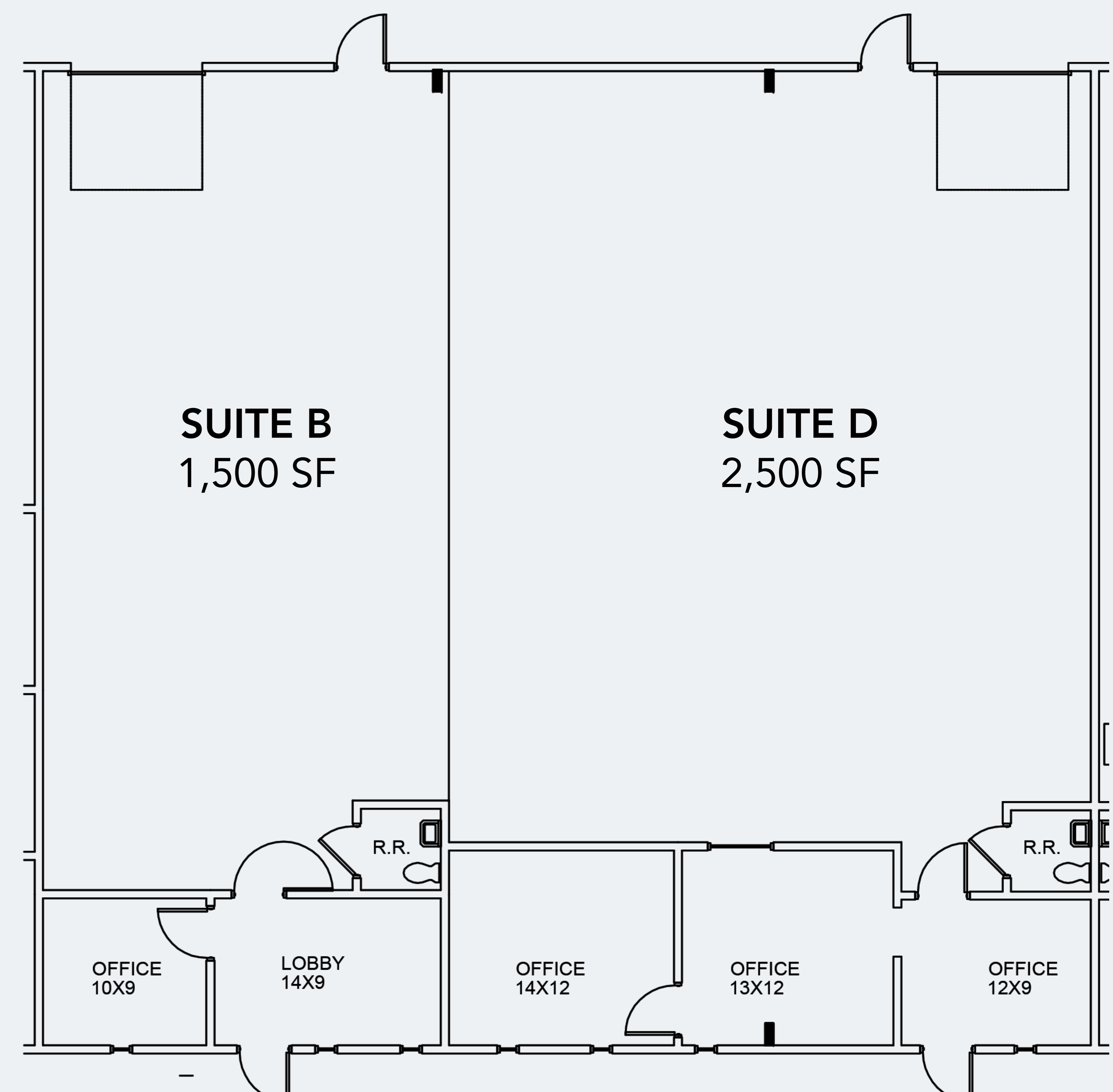
Industrial/Flex Buildings For Lease

PROPERTY OVERVIEW

- **Year Built:** 1987
- **Zoning:** General Commercial (GC)
- **Clear Height:** 16'
- **Dock High Door:** (8'x10')
- **Parking Ratio:** 1.95 / 1,000 SF
- Each available suite is newly renovated with a roll up door, private bathroom, and storefront entrance.
- Close proximity to I-75 and I-285

AVAILABLE SPACES

SUITE	UNIT DESCRIPTION
<i>Building 2974</i>	
Suite B	1,500 SF One 8' W x 10' H Dock High Door 1 Offices
Suite D	2,500 SF One 8' W x 10' H Dock High Door 2 Offices



FOR MORE INFORMATION,
PLEASE CONTACT:



JACK KIMBREL
229.894.8152
jack@riseprop.com



REILLY KATZ
404.435.5460
reilly@riseprop.com

