

17,424 SF COMMERCIAL VACANT LAND FOR SALE

One of the Last Remaining Parcels on Highway 111
Located NWC of Highway 111 / San Luis Rey

REDUCED!
\$784,000!
(\$44.99/SF)



73796 Highway 111, Palm Desert, CA 92260

Baxley
Properties, Inc.

www.baxleyproperties.com
Phone: 760-773-3310
Fax: 760-773-3013
73712 Alessandro Drive, Ste B-4
Palm Desert, CA 92260

- Utilities to Site
- Zoning: Downtown Core Overlay

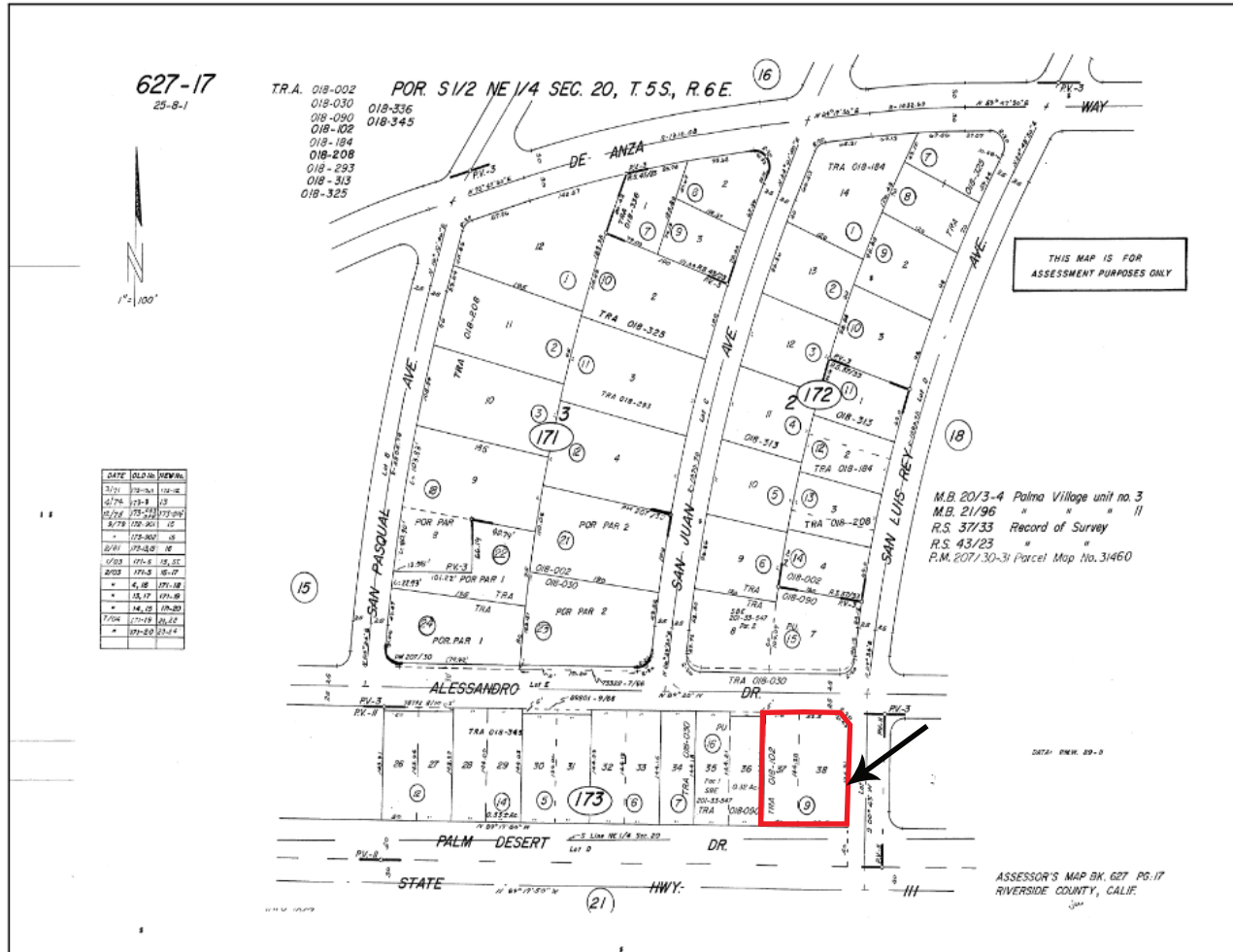
- APN: 627-173-009
- (Size: 0.4 Acres - 17,424 SF)

Matthew Longstreth
matthew@baxleyproperties.com
Ofc: 760-773-3310
Cell: 949-293-1314
DRE# 01322594

17,424 SF COMMERCIAL VACANT LAND FOR SALE

73796 Highway 111, Palm Desert, CA 92260

PLAT MAP: APN: 627-173-009 (0.4 Ac - 17,424 SF)



**Drive-thru's
Are Prohibited**

Disclaimer: Information has been secured from sources we believe to be reliable, however, Baxley Properties, Inc. cannot guarantee its accuracy.