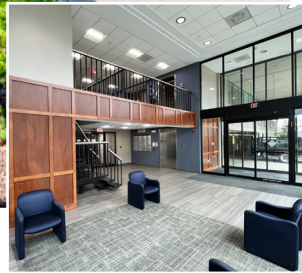


MEDICAL OFFICE CONDO FOR SALE

• 901 stewart avenue • garden city, new york



LOCATION

- garden city, new york 11530
- central nassau county submarket

SPACE AVAILABLE

FULLY BUILT OUT MEDICAL OFFICE CONDO

- 2,146 square feet | second floor

• medical office suite for sale •

COMMENTS:

- Minutes from the Meadowbrook Parkway, Old Country Road and Hempstead Turnpike
- Close to Roosevelt Field Mall, Eisenhower Park, attractions, restaurants, and shops
- 2.3 miles to Westbury LIRR Station
- 6:1000 Parking Ratio
- 24/7 access

FOR INFORMATION CONTACT:

MICHAEL LEVENSTEIN

401 broad hollow road • suite L1
melville, new york 11747

main - 516.935.8300 direct - 516.441.7330

michael.levenstein@therochlinorganization.com

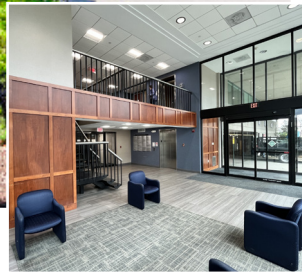
www.therochlinorganization.com



- A Long Island Expwy
- B Northern State Pkwy
- C Southern State Pkwy
- D Cross Island Pkwy
- E Wantagh State Pkwy
- F Seaford Oyster Bay Expwy

MEDICAL OFFICE CONDO FOR SALE

• 901 stewart avenue • garden city, new york



LOCATION

- garden city, new york 11530
- central nassau county submarket

SPACE AVAILABLE

FULLY BUILT OUT MEDICAL OFFICE CONDO

- 2,146 square feet | second floor

• medical office suites for sale •

COMMENTS:

- Minutes from the Meadowbrook Parkway, Old Country Road and Hempstead Turnpike
- Close to Roosevelt Field Mall, Eisenhower Park, attractions, restaurants, and shops
- 2.3 miles to Westbury LIRR Station
- 6:1000 Parking Ratio
- 24/7 access

FOR INFORMATION CONTACT: ANDREW CANNER

401 broad hollow road • suite L1
melville, new york 11747

main - 516.935.8300 direct - 516.441.7340

andrew.canner@therochlinorganization.com

www.therochlinorganization.com



All information furnished is from sources deemed reliable. No representation or warranty is made as to the accuracy thereof and is submitted subject to errors, omissions, change of price, prior sales or lease, or withdrawal without notice, and any negligence on this part of the writer.