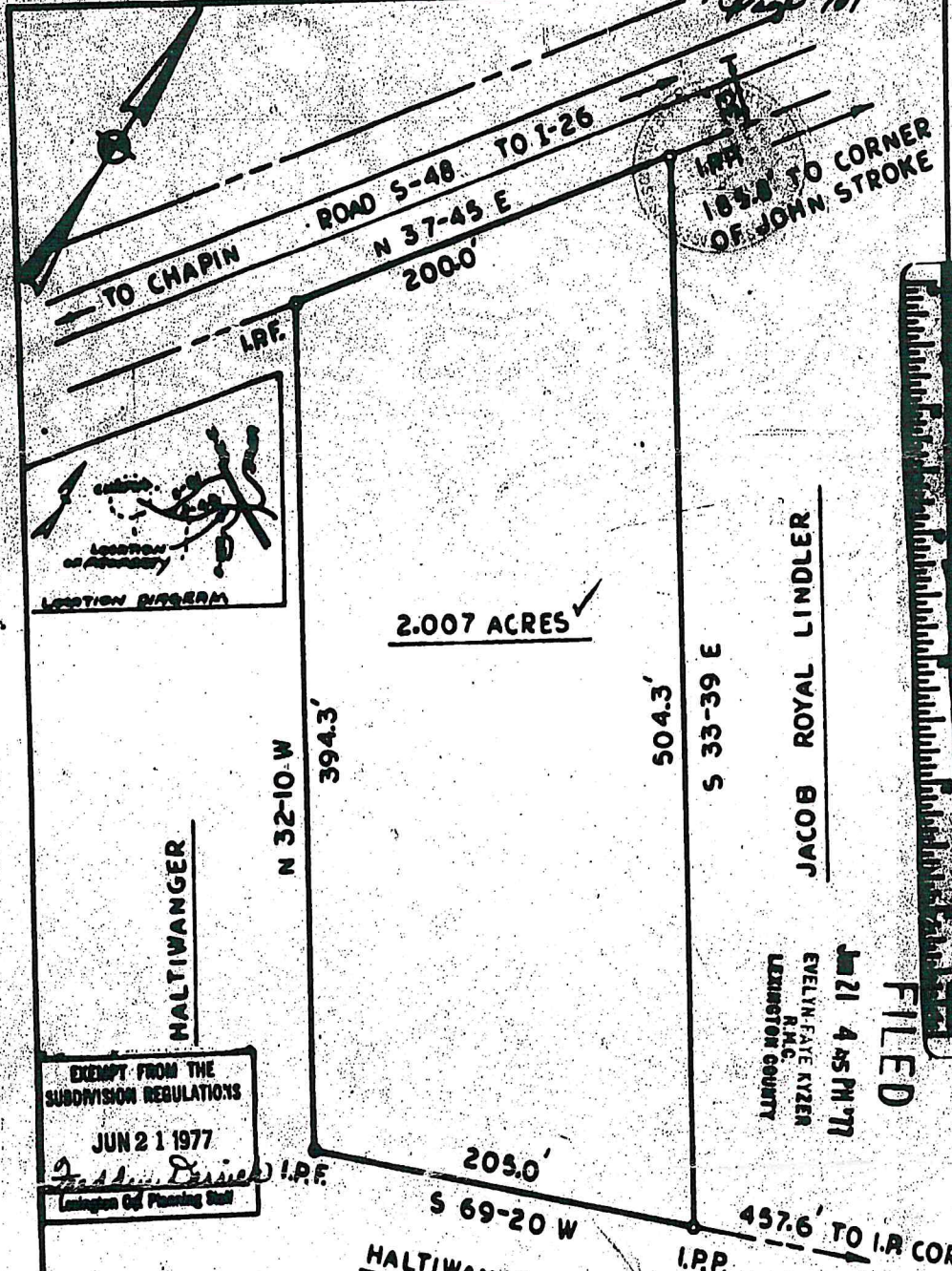


Plat Book 152-b, Plat # 186
Page 101



EXEMPT FROM THE
SUBDIVISION REGULATIONS
JUN 21 1977
J. L. ...
Lexington Co. Planning Staff

FILED
JUN 21 4 45 PM '77
EVELYN FAYE RYZER
REG.
LEXINGTON COUNTY

ACC. = 1:4600

G. LENARD SHEALY &
PLAT PREPARED FOR: FRANCES S. SHEALY

SURVEYED BY: TED L. BOOZER - REG. ENGR. & L.S.
LOCATION: LEXINGTON, CO. APPROX. 1.3 MILES EAST OF CHAPIN

DATE: JUNE 18, 1977
SCALE: 1" = 60'

REF: SEE PLAT FOR J.R. LINDLER BY
CLAUDE E. JOHNSON DATED 8-29-1959 *Ted L. Boozer #2978*

Plat Book 152-b, Plat # 186