

RETAIL/OFFICE SPACE FOR LEASE



INTRODUCING

371 Mamaroneck Ave

White Plains, NY 10605

DOWNTOWN RETAIL/OFFICE SPACE AVAILABLE

- 1200 sf of 2nd floor retail space
- All open areas
- Ideally suited for Salon, Spa, Fitness, Martial Arts, and After School programs
- Neighboring stores: 44 Board, Keymasters locksmith and Italian Pavilion restaurant
- Large parking lot in rear of building

1,200
SQFT

\$35 PSF MG
OFFERED AT



PAUL KRAMER

Real Estate Salesperson

M 914 953 7774 O 914.798.4900
pkramer@houlihanlawrence.com



HOULIHAN LAWRENCE
COMMERCIAL

800 Westchester Avenue, Suite N-517
Rye Brook, NY 10573
www.houlihanlawrence.com/commercial/

Discover White Plains



58,137
POPULATION

25
MILES TO NYC

9.9
SQUARE MILES



CITY OF WHITE PLAINS

White Plains is situated in the center of the county at the crossroads of all major transportation. It has two Metro North stations, is just 15 minutes from the county airport and 25 miles from Manhattan. White Plains is a winning combination of old and new. A community rich in history, where the Declaration of Independence was read, making White Plains the birthplace of New York State. Fine old neighborhoods and spectacular new high rises offer a variety of living styles. As a corporate home to many Fortune 500 companies, White Plains offers varied employment opportunities. Yet the quality of life is thoughtfully preserved through carefully planned growth and expert management of this mini-metropolis. White Plains is the seat of Westchester County's Government and Court facilities. Additionally, outstanding corporate and retail establishments give White Plains the lowest real estate taxes in the county. White Plains is the leading retail center for Westchester County.

PARKS & RECREATION

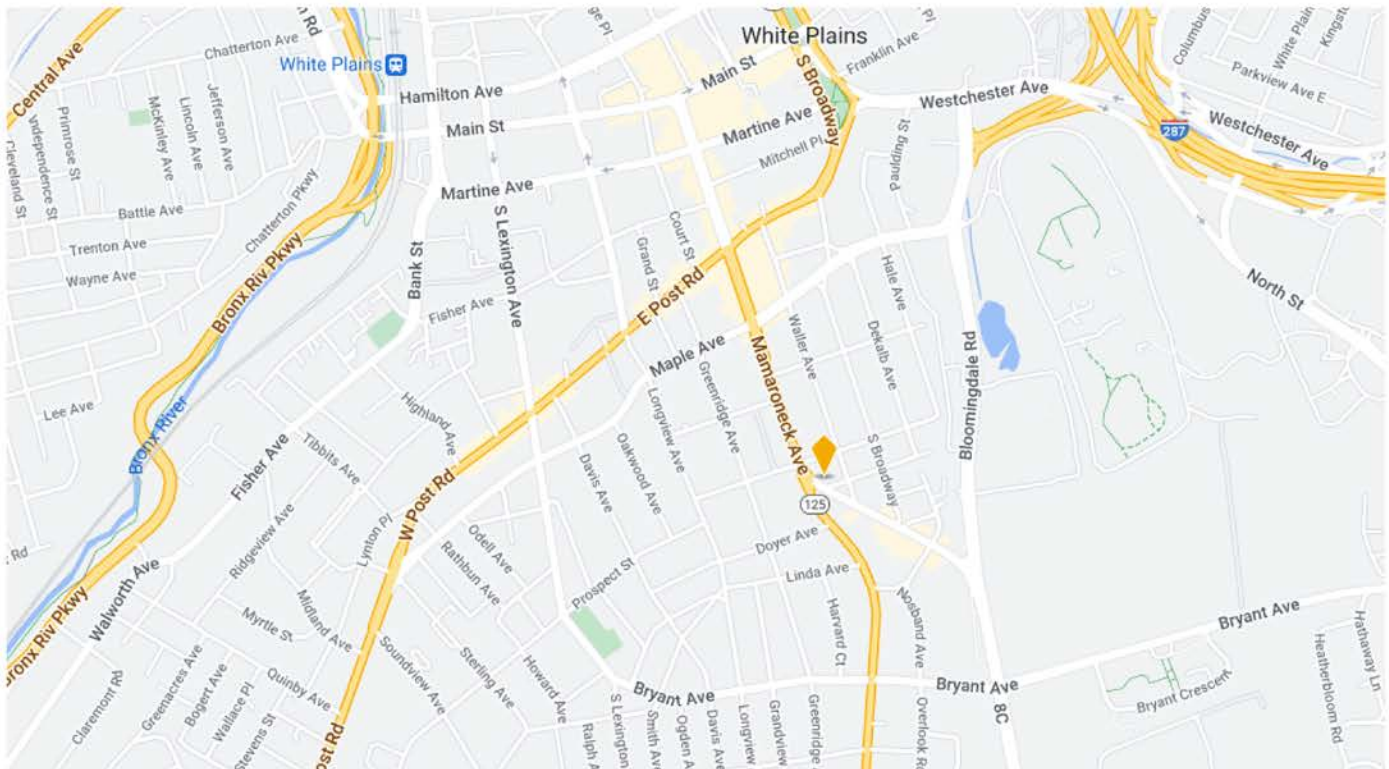
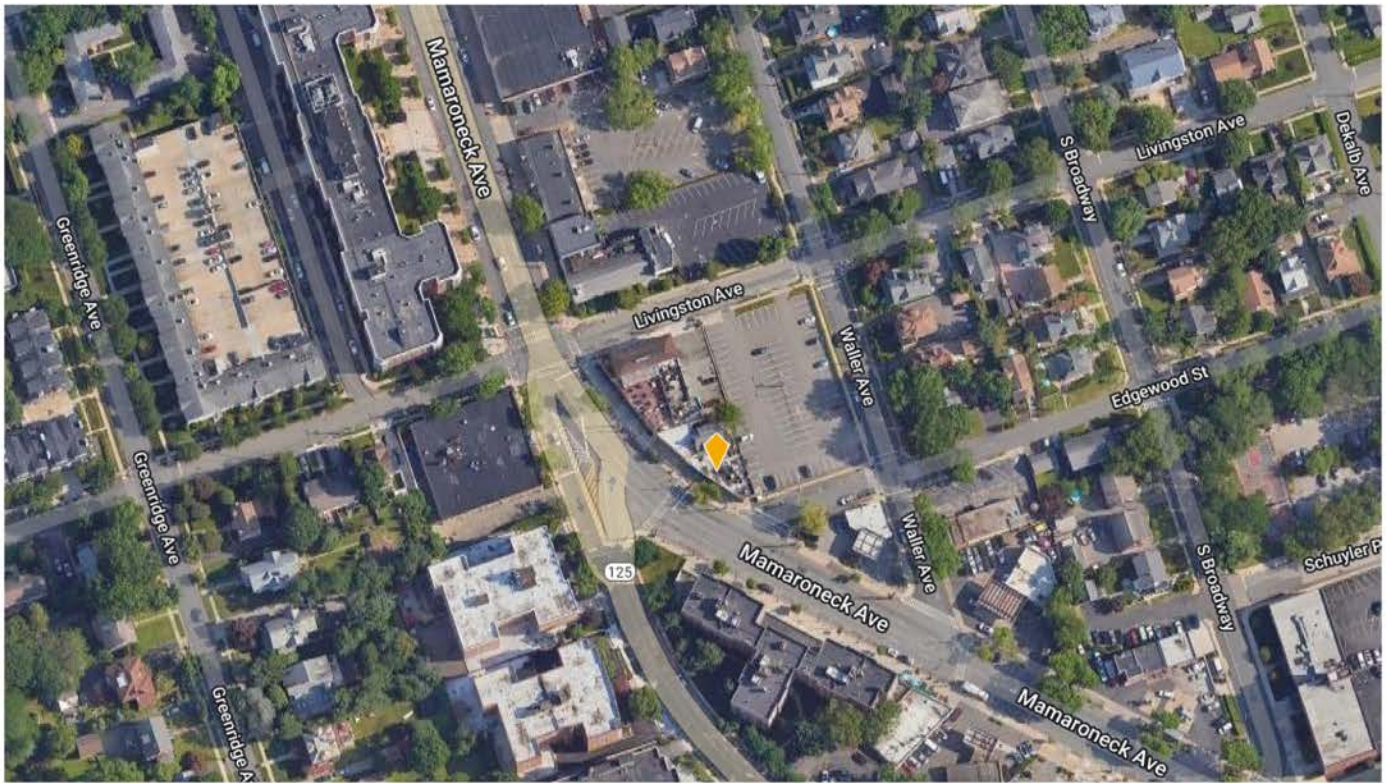
"The City in the Park" offers outstanding recreational and cultural facilities. The Recreation and Parks Department offer one hundred sports and athletic programs, instructional classes, camps, cultural activities, ice skating at Ebersole Ice Rink and special events. These local options are enhanced by the County's 18,000 acres of parkland, beaches, trails, golf courses & boating facilities. A state-of-the-art library is located downtown and shows and events may be enjoyed at the Westchester County Center and the Westchester Conservatory of Music.

EDUCATION

The White Plains Public Schools have a national reputation for excellence. The high school, which has a nearly 100 percent graduation rate, offers an academic program with honors and advanced placement courses, as well as a vocational training program.

FOR MORE INFORMATION AND HELPFUL TOWN LINKS VISIT HOULIHANLAWRENCE.COM

MAPS



HOULIHAN LAWRENCE
COMMERCIAL

The information contained in this Offering Memorandum is confidential, furnished solely for the purpose of review by a prospective purchaser of certain information relating to the property mentioned herein (the "Property"), and is not to be used for any other purpose or made available to any other person without the prior written consent of HLC. The material is subject to errors and omissions and based on part upon information supplied by sources deemed reliable.