

INDUSTRIAL SPACE FOR LEASE



3201 Pine Tree Rd, Suite B, Lansing, MI
26,175 SF Warehouse Space Available



Julie O'Brien
Senior Vice President
517 230 8944
Julie.obrien@colliers.com

Colliers

Colliers Lansing
2501 Coolidge Rd, Suite 300
East Lansing, MI 48823
colliers.com/lansing



Space Overview

Available Space: 26,175 SF

Clear Height: 28' to Ceiling
22'10" to 24'4" Clear

HVAC: Radiant Heat

Column Spacing: 36' x 50' Spacing

Dock Doors: (1) Loading Dock

Grade Level Doors: (1) 14' Grade Level

Power: 3-Phase; 480-Volt
Electricity

Fire Suppression: Fire Suppression

Flooring: 6" Concrete

Pedestrian Doors: (4) Doors

Other: Small Office Available

Property Overview

Building Size: 39,825

Tenancy: Dual Tenant Occupancy

Construction: Block/Steel

Storage: Outside Fenced-In
Storage Available

Parking: ±40 Spaces

Zoning: Industrial-Warehouse

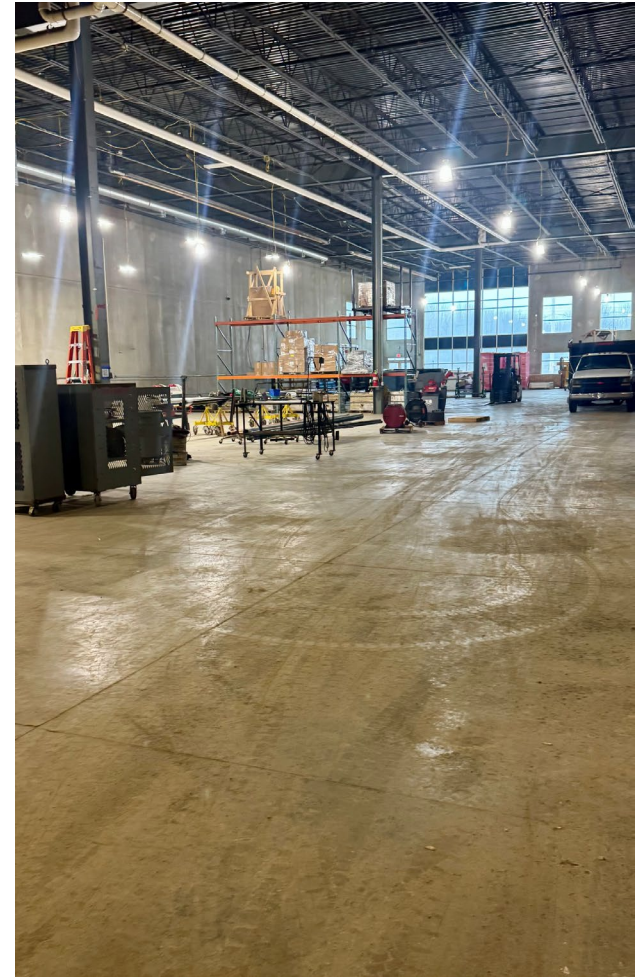
Year Built: 2008

Municipality: Delhi Charter Township

Parcel #: 33-25-05-02-400-010

Lease Rate: \$8.50/SF NNN
(NNN = ±\$3.10/SF)

Colliers



PROPERTY SPECS

26,175 SF Warehouse Space Available



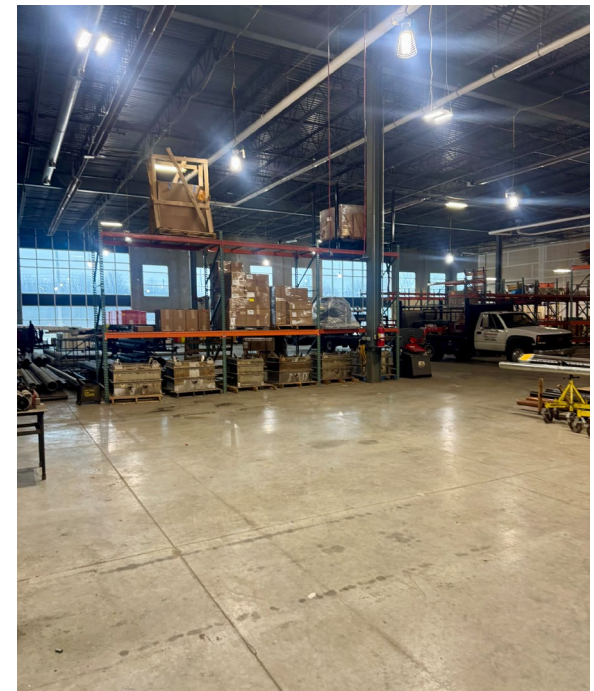
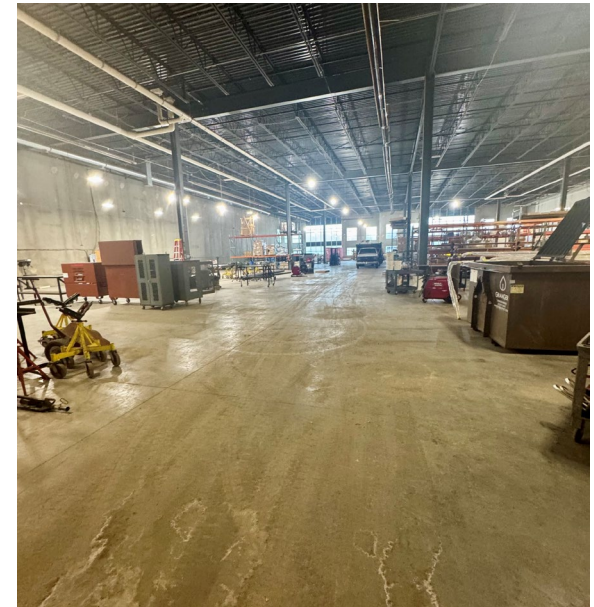
FOR LEASE

26,175 SF Warehouse Space Available

AREA HIGHLIGHTS

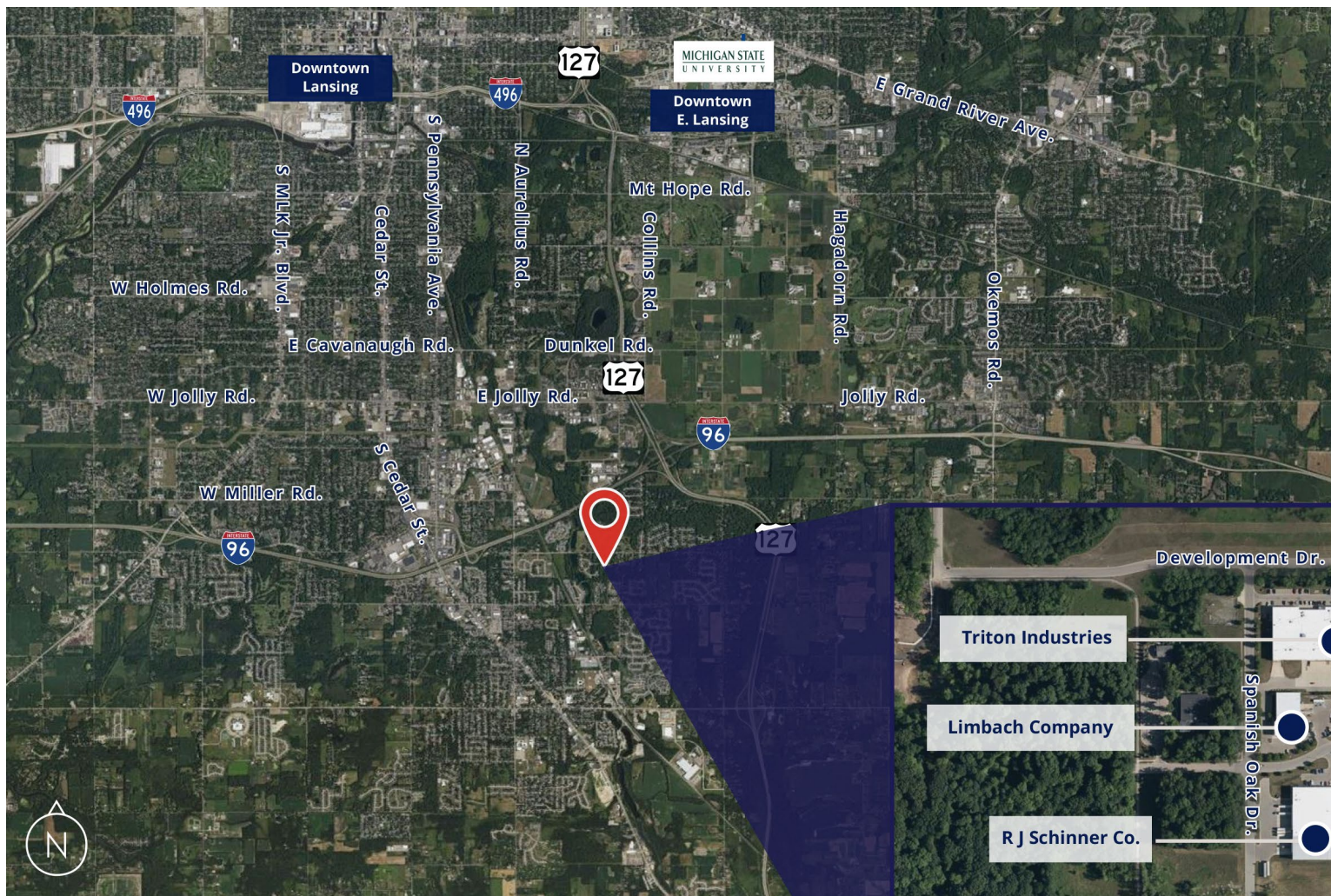
- Located Within Oakwood Executive Park
- Michigan Certified Business Park
- Industrial Development Center
- CATA Bus Route
- 1.5 Miles From US-127 and Adjacent to I-96
- Proximity to the Post Office and Michigan State University





FOR LEASE

26,175 SF Warehouse Space Available



We have no reason to doubt the accuracy of information contained herein, but we cannot guarantee it. All information should be verified prior to purchase and/or lease.

AREA MAP

26,175 SF Warehouse Space Available



Julie O'Brien
Senior Vice President
517 230 8944
julie.obrien@colliers.com