

FOR LEASE

600 Waterfront Drive

Pittsburgh, PA 15222



Brad Totten

Principal, Managing Director

D 412 944 2132

brad.totten@avisonyoung.com

Tucker Dunn

Associate

D 412 944 2133

tucker.dunn@avisonyoung.com

Avison Young · Pittsburgh | Four PPG Place, Suite 300 | Pittsburgh, PA 15222

© 2024. Avison Young - Pittsburgh. Information contained herein was obtained from sources deemed reliable and, while thought to be correct, have not been verified. Avison Young - Pittsburgh does not guarantee the accuracy or completeness of the information presented, nor assumes any responsibility or liability for any errors or omissions therein.

Class A Office Space Available

**AVISON
YOUNG**

Office space for lease

600 Waterfront Drive



Property Highlights

- 1st floor as-built suite comprised of 3,166 RSF
- Access to private outdoor patio and green space
- Free parking: 2.75 spaces / 1,000 SF
- Beautifully renovated and professionally managed
- Washington’s Landing location:
 - Immediate access to Route 28 North/South
 - Easy access to CBD, Strip District and Lawrenceville

Offering Summary

Lease Rate	\$22.50 SF/yr (Full Service)
Building Size	28,862
Available SF	3,166 RSF

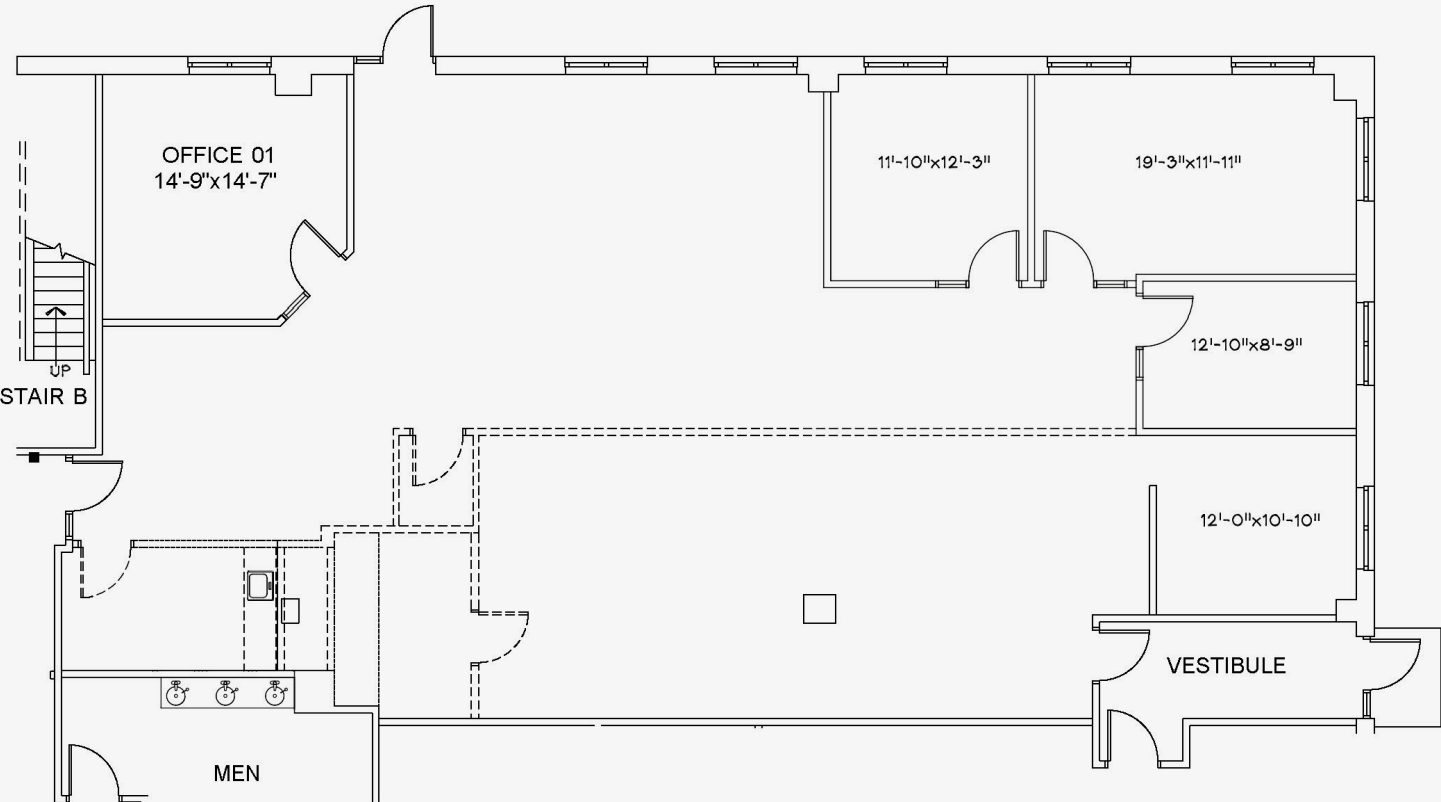


Brad Totten
Principal, Managing Director
D 412 944 2132
brad.totten@avisonyoung.com

Tucker Dunn
Associate
D 412 944 2133
tucker.dunn@avisonyoung.com

ALLEGHENY RIVER

OUTDOOR
PATIO



Suite 110 available for lease

3,166 RSF



Brad Totten
Principal, Managing Director
D 412 944 2132
brad.totten@avisonyoung.com

Tucker Dunn
Associate
D 412 944 2133
tucker.dunn@avisonyoung.com