

Cotleur & Hearing

Landscape Architects
Land Planners
Environmental Consultants
1934 Commerce Lane
Suite 1
Jupiter, Florida 33458
561.747.6336 · Fax 747.1377
www.cotleurhearing.com
Lic# LC-26000535

West End Crossing MUPD

Preliminary Site Plan
Palm Beach County, Florida



Scale: 1" = 30'



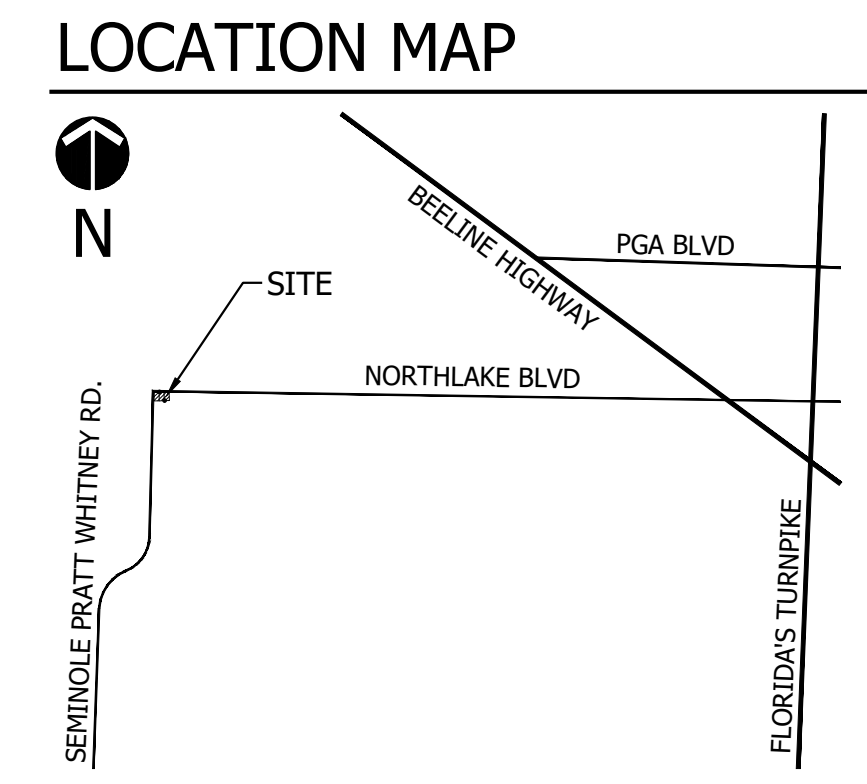
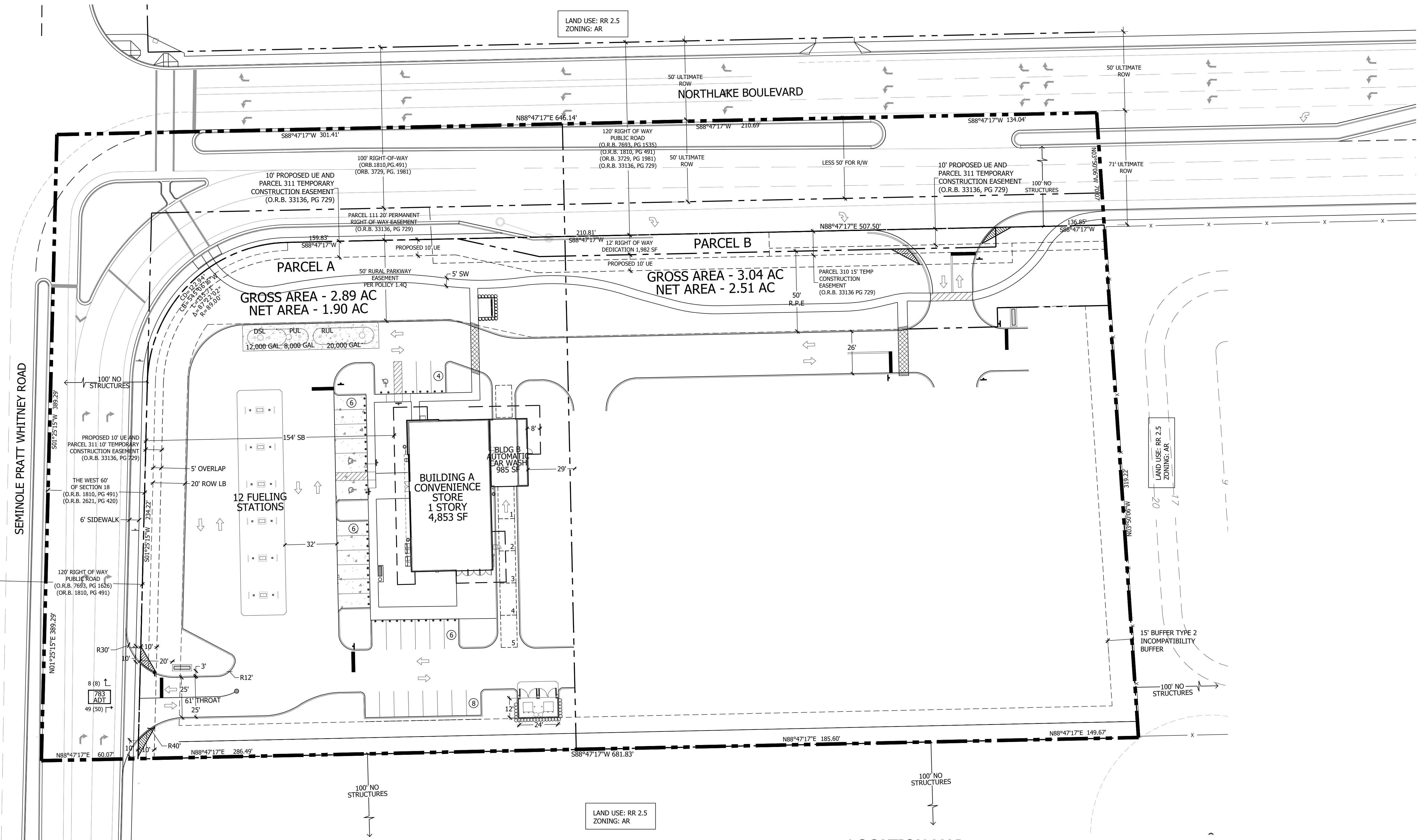
DESIGNED	DEH
DRAWN	RNK
APPROVED	DEH
JOB NUMBER	21-0125
DATE	06-23-23
REVISIONS	07-19-23
01-22-24	09-26-23
02-14-24	10-19-23
04-16-24	11-08-23
	12-27-23

April 16, 2024 2:21:55 p.m.
Drawing: 21-0125 SP C.DWG

PSP

SHEET 1 OF 1

© COTLEUR & HEARING, INC.
These drawings are the property of the architect and are not to be used for extensions or on other projects except by agreement in writing with the architect. Immediately report any discrepancies to the architect.



LEGEND

BBL	BASE BUILDING LINE	○	ADA SIGN
ADA	AMERICANS W DISABILITIES ACT	■	STOP SIGN
LB	LANDSCAPE BUFFER	⊘	DO NOT ENTER
R	RADIUS	⊘	PEDESTRIAN CROSSING
SB	SETBACK	⊘	PARKING LIGHT
SW	SIDEWALK	⊘	PEDESTRIAN LIGHT
TYP	TYPICAL	⊘	FPL COACH LIGHT
ULT RW	ULTIMATE RIGHT OF WAY	⊘	
ROW	RIGHT OF WAY	⊘	
FP	FOUNDATION PLANTING	⊘	
UE	UTILITY EASEMENT	⊘	
OH	OVER HANG	⊘	

CONCEPT 1