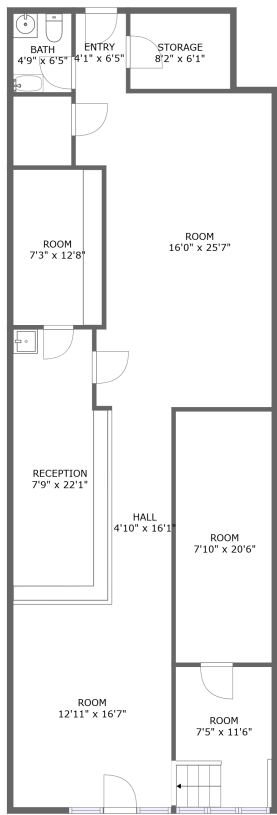




2519 Gresham Road Southeast, Atlanta, Georgia
30316, United States, juice





FLOOR 1

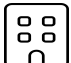
Property summary


 **0** Garages


 **0** Bedrooms

 **1** Bathrooms

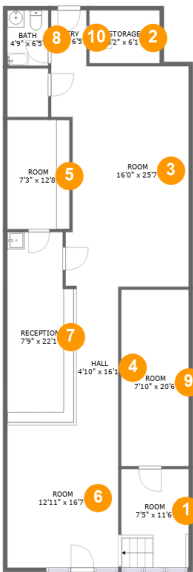
 **0** Half baths

 **1** Floors

 **1,372** Gross living area sqft

 **1,430** Total sqft

2519 Gresham Road Southeast, Atlanta, Georgia
30316, United States, juice



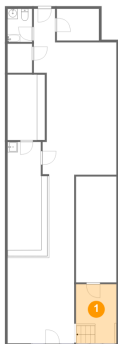
Room dimensions

Floor 1 Total sqft: 1430 Living area: 1372

#		Dimensions	sqft	Counted as living area
1	Room	7'5" x 11'6"	90 sq. ft	Yes
2	Storage	8'2" x 6'1"	50 sq. ft	No
3	Room	16'0" x 25'7"	366 sq. ft	Yes
4	Hall	4'10" x 16'1"	78 sq. ft	Yes
5	Room	7'3" x 12'8"	92 sq. ft	Yes
6	Room	12'11" x 16'7"	214 sq. ft	Yes
7	Reception	7'9" x 22'1"	170 sq. ft	Yes
8	Bath	4'9" x 6'5"	31 sq. ft	Yes
9	Room	7'10" x 20'6"	161 sq. ft	Yes
10	Entry	4'1" x 6'5"	27 sq. ft	Yes

2519 Gresham Road Southeast, Atlanta, Georgia
30316, United States, juice

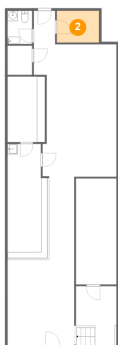
1 Floor 1 - Room



Dimensions: 7'5" x 11'6"
Area: 90 sq. ft
Counted as living area: Yes

Heated: Yes
Finished: Yes
Enclosed: Yes
Contiguous: Yes
Permitted: Yes
Wet space: No
Addition: No
Conversion: No

2 Floor 1 - Storage

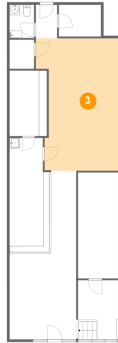


Dimensions: 8'2" x 6'1"
Area: 50 sq. ft
Counted as living area: No

Heated: No
Finished: No
Enclosed: No
Contiguous: Yes
Permitted: Yes
Wet space: No
Addition: No
Conversion: No

2519 Gresham Road Southeast, Atlanta, Georgia
30316, United States, juice

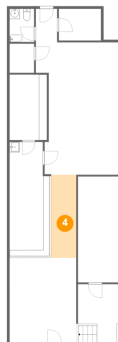
3 Floor 1 - Room



Dimensions: 16'0" x 25'7"
Area: 366 sq. ft
Counted as living area: Yes

Heated: Yes
Finished: Yes
Enclosed: Yes
Contiguous: Yes
Permitted: Yes
Wet space: No
Addition: No
Conversion: No

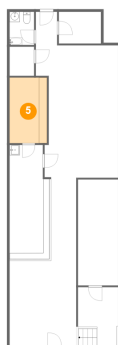
4 Floor 1 - Hall



Dimensions: 4'10" x 16'1"
Area: 78 sq. ft
Counted as living area: Yes

Heated: Yes
Finished: Yes
Enclosed: Yes
Contiguous: Yes
Permitted: Yes
Wet space: No
Addition: No
Conversion: No

5 Floor 1 - Room

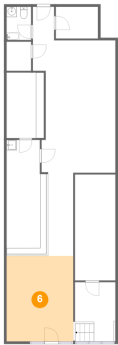


Dimensions: 7'3" x 12'8"
Area: 92 sq. ft
Counted as living area: Yes

Heated: Yes
Finished: Yes
Enclosed: Yes
Contiguous: Yes
Permitted: Yes
Wet space: No
Addition: No
Conversion: No

2519 Gresham Road Southeast, Atlanta, Georgia
30316, United States, juice

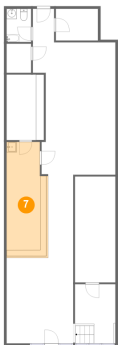
6 Floor 1 - Room



Dimensions: 12'11" x 16'7"
Area: 214 sq. ft
Counted as living area: Yes

Heated: Yes
Finished: Yes
Enclosed: Yes
Contiguous: Yes
Permitted: Yes
Wet space: No
Addition: No
Conversion: No

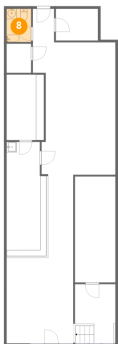
7 Floor 1 - Reception



Dimensions: 7'9" x 22'1"
Area: 170 sq. ft
Counted as living area: Yes

Heated: Yes
Finished: Yes
Enclosed: Yes
Contiguous: Yes
Permitted: Yes
Wet space: No
Addition: No
Conversion: No

8 Floor 1 - Bath

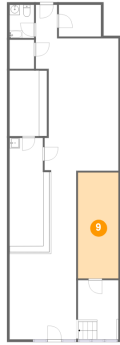


Dimensions: 4'9" x 6'5"
Area: 31 sq. ft
Counted as living area: Yes

Heated: Yes
Finished: Yes
Enclosed: Yes
Contiguous: Yes
Permitted: Yes
Wet space: Yes
Addition: No
Conversion: No

**2519 Gresham Road Southeast, Atlanta, Georgia
30316, United States, juice**

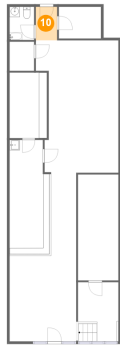
9 Floor 1 - Room



Dimensions: 7'10" x 20'6"
Area: 161 sq. ft
Counted as living area: Yes

Heated: Yes
Finished: Yes
Enclosed: Yes
Contiguous: Yes
Permitted: Yes
Wet space: No
Addition: No
Conversion: No

10 Floor 1 - Entry



Dimensions: 4'1" x 6'5"
Area: 27 sq. ft
Counted as living area: Yes

Heated: Yes
Finished: Yes
Enclosed: Yes
Contiguous: Yes
Permitted: Yes
Wet space: No
Addition: No
Conversion: No