

# ORIOLE LOGISTICS CENTER

16671 , 16681, & 16691 ORIOLE ROAD  
FORT MYERS, FLORIDA 33912



Click to View  
Property Video



 **LEE &  
ASSOCIATES**  
COMMERCIAL REAL ESTATE SERVICES

Lee-FL.com  


 **Capital Partners**

# ORIOLE LOGISTICS CENTER



## PROPERTY FACTS - BUILDING 1

<b>Address</b>	16671 Oriole Road, Fort Myers, FL 33912		
<b>Lease Rate</b>	Negotiable	<b>Column Spacing</b>	50' x 50' w/60' Speed Bay (or Dock Bay)
<b>Number of Buildings</b>	One (1)	<b>Building Depth</b>	160'
<b>Remaining Space</b>	136,000 SF	<b>Minimum Size</b>	24,000 SF
<b>Year Built</b>	2015	<b>Sprinkler</b>	ESFR
<b>Clear Height</b>	28'	<b>Zoning</b>	MPD (Mixed-Use Planned Development)

**~ FULLY LEASED! ~**

## PROPERTY FACTS - BUILDINGS 2 & 3

<b>Address</b>	16681 & 16691 Oriole Road, Fort Myers, FL 33912		
<b>Lease Rate</b>	Negotiable	<b>Column Spacing</b>	50' x 60'
<b>Number of Buildings</b>	Two (2)	<b>Building Depth</b>	180'
<b>Remaining Space</b>	153,000 SF	<b>Minimum Size</b>	27,000 SF
<b>Year Built</b>	2025	<b>Sprinkler</b>	ESFR
<b>Clear Height</b>	32'	<b>Zoning</b>	MPD (Mixed-Use Planned Development)



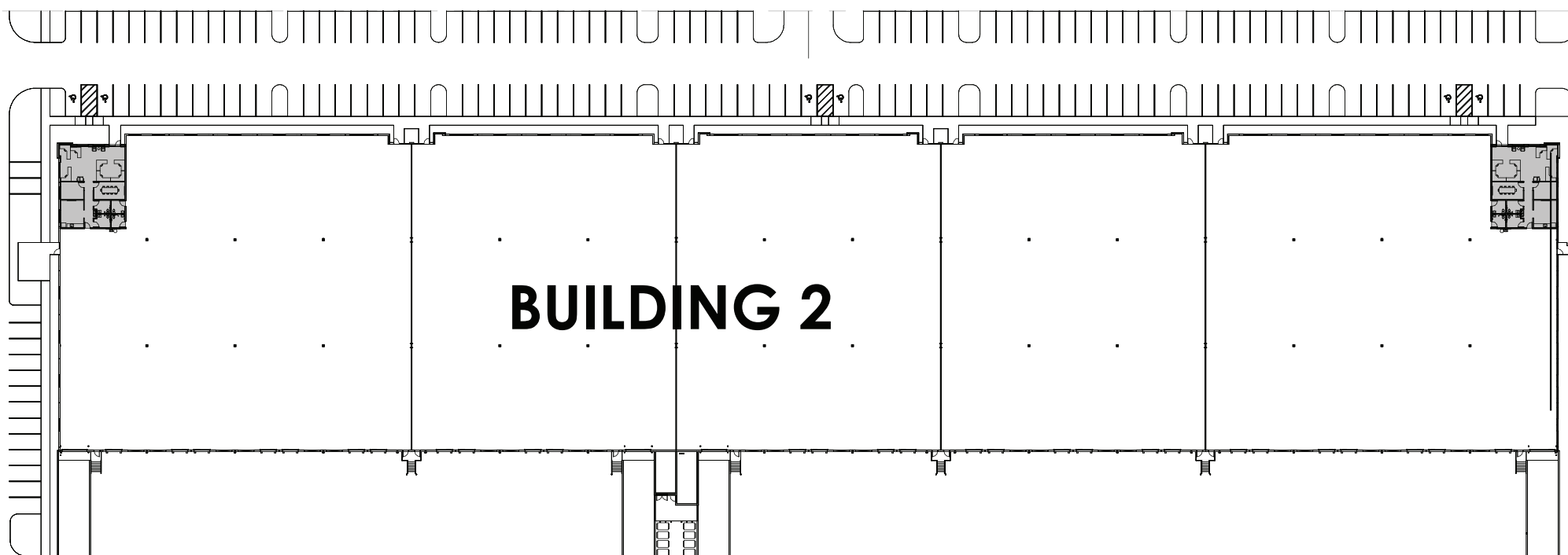
Floor Plan

# BUILDING 2

16681 Oriole Road

 LEE &  
ASSOCIATES

 Capital Partners



## BUILDING 2 SPECIFICATIONS

153,000 SF Total

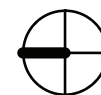
Twenty-Eight (28) Dock Doors

Four (4) Drive-In Doors Via Ramps

32' Clear Height

180' x 850'

202 Parking Spaces



Office Plan

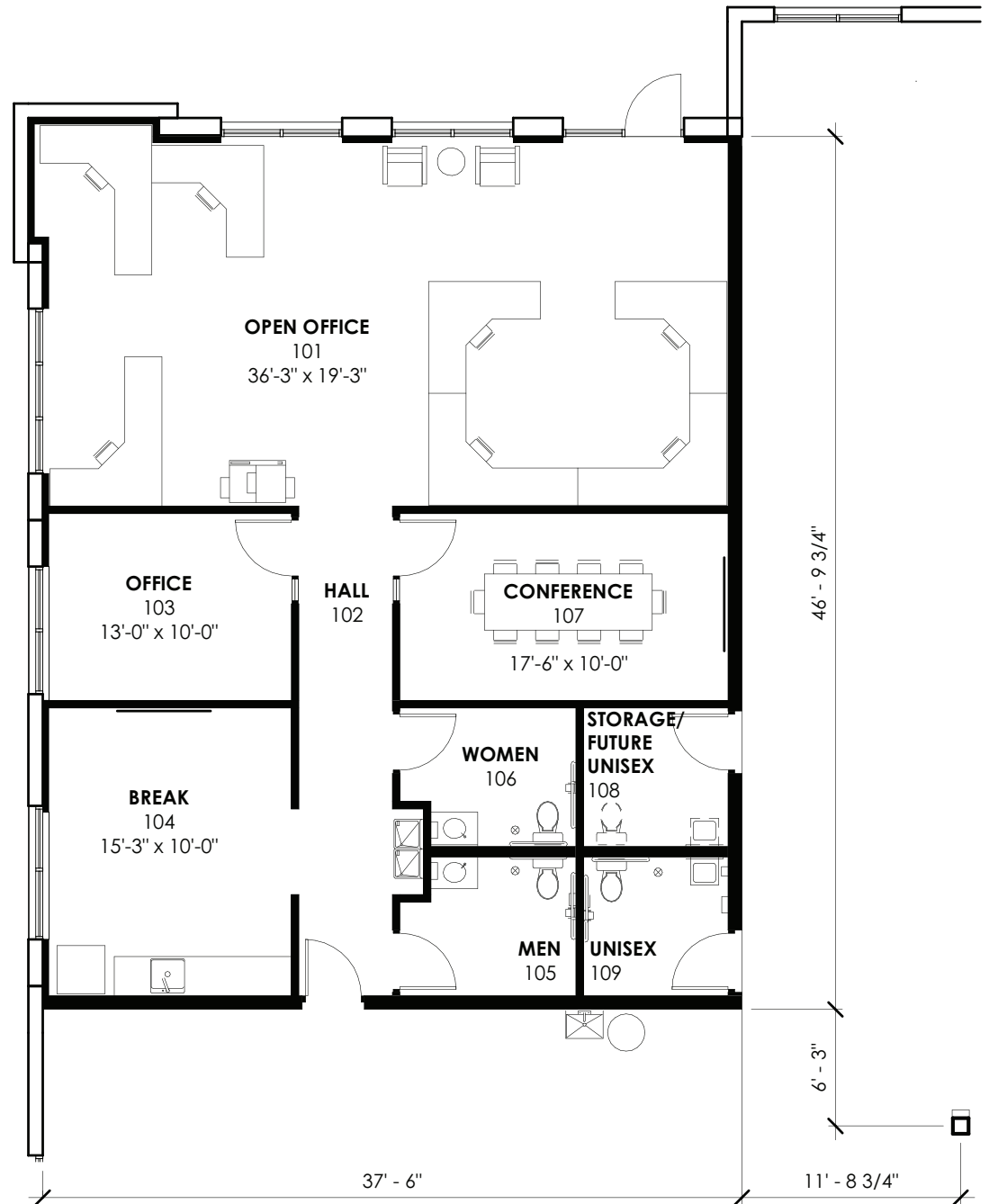
# BUILDING 2

16681 Oriole Road



## BUILDING 2

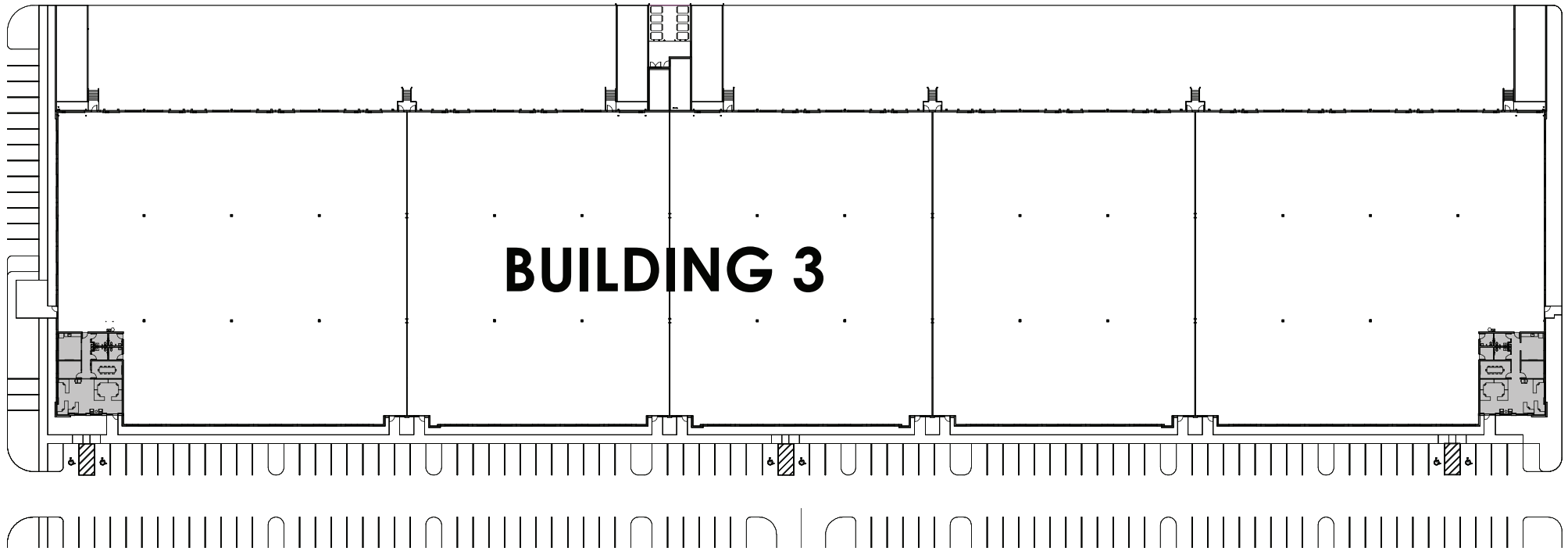
Office Detail  
1,810 SF



Floor Plan

# BUILDING 3

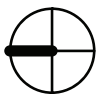
16691 Oriole Road



## BUILDING 3 SPECIFICATIONS

- 153,000 SF Total
- Twenty-Eight (28) Dock Doors
- Four (4) Drive-In Doors Via Ramps
- 32' Clear Height
- 180' x 850'
- 202 Parking Spaces

**BUILD-TO-SUIT  
OPPORTUNITIES  
AVAILABLE!**



Office Plan

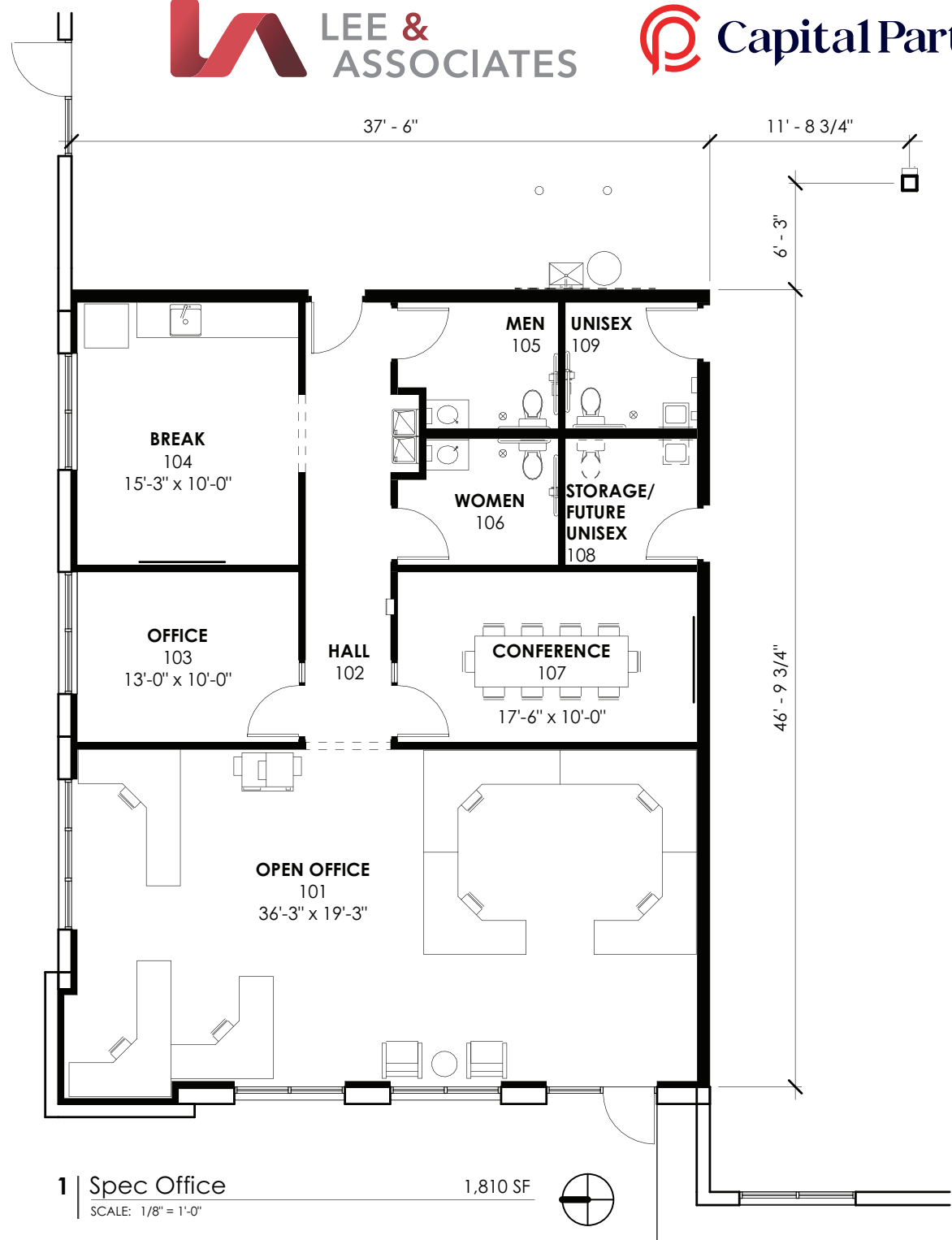
# BUILDING 3

16691 Oriole Road



# BUILDING 3

Office Detail  
1,810 SF



1 | Spec Office  
SCALE: 1/8" = 1'-0"

1,810 SF



# LOCATION AERIAL



**FREIGHTLINER**  
**FIDELITONE**  
**ALGENOL**  
**BEACON**  
**CARmax**  
**Velocity ENGINEERING SERVICES**  
**rice**  
INSULATION & GLASS  
**CALIFORNIA CLOSETS**  
**TEN-8**  
**TREND**  
TRENDS

**TESLA**  
**WHITE CAP**  
**ABC**  
Supply Co. Inc.  
**Cummins**  
**amazon.com**  
**MARJAM**

**Frito Lay**  
**PerformanceHealth**  
Surgery Center  
**NEO GENOMICS**

**FRANTZ**  
EyeCare  
**SCOTLYNN**

**CD**  
CLIVE DANIEL  
**Capital Partners**  
**ORIOLE LOGISTICS CENTER**  
**THE HOME DEPOT**  
**Wawa**

**FASTENAL**  
**RaceTrac**

**Three Oaks Pkwy**  
**PerformanceHealth**  
Surgery Center  
**NEO GENOMICS**  
**FRANTZ**  
EyeCare  
**SCOTLYNN**

**Capital Partners**  
**ORIOLE LOGISTICS CENTER**  
**THE HOME DEPOT**  
**Wawa**

**ORIOLE Rd**  
**Capital Partners**  
**ORIOLE LOGISTICS CENTER**  
**THE HOME DEPOT**  
**Wawa**

**ORIOLE Rd**  
**Capital Partners**  
**ORIOLE LOGISTICS CENTER**  
**THE HOME DEPOT**  
**Wawa**

**ORIOLE Rd**  
**Capital Partners**  
**ORIOLE LOGISTICS CENTER**  
**THE HOME DEPOT**  
**Wawa**

**ORIOLE Rd**  
**Capital Partners**  
**ORIOLE LOGISTICS CENTER**  
**THE HOME DEPOT**  
**Wawa**

**Terminal Access Rd**  
**SLICK CITY**  
ACTION PARK  
**PRIME FIBER**  
**HD SUPPLY**  
**GCM**  
Consulting Solutions, Inc.  
**RIVIAN**

**Terminal Access Rd**  
**SLICK CITY**  
ACTION PARK  
**PRIME FIBER**  
**HD SUPPLY**  
**GCM**  
Consulting Solutions, Inc.  
**RIVIAN**

**Terminal Access Rd**  
**SLICK CITY**  
ACTION PARK  
**PRIME FIBER**  
**HD SUPPLY**  
**GCM**  
Consulting Solutions, Inc.  
**RIVIAN**

**Terminal Access Rd**  
**SLICK CITY**  
ACTION PARK  
**PRIME FIBER**  
**HD SUPPLY**  
**GCM**  
Consulting Solutions, Inc.  
**RIVIAN**

**Terminal Access Rd**  
**SLICK CITY**  
ACTION PARK  
**PRIME FIBER**  
**HD SUPPLY**  
**GCM**  
Consulting Solutions, Inc.  
**RIVIAN**

**Terminal Access Rd**  
**SLICK CITY**  
ACTION PARK  
**PRIME FIBER**  
**HD SUPPLY**  
**GCM**  
Consulting Solutions, Inc.  
**RIVIAN**

**Terminal Access Rd**  
**SLICK CITY**  
ACTION PARK  
**PRIME FIBER**  
**HD SUPPLY**  
**GCM**  
Consulting Solutions, Inc.  
**RIVIAN**

**Terminal Access Rd**  
**SLICK CITY**  
ACTION PARK  
**PRIME FIBER**  
**HD SUPPLY**  
**GCM**  
Consulting Solutions, Inc.  
**RIVIAN**

**wayfair**  
**TRANE**  
**VIVID ev**  
**G&G DELIVERY SERVICES INC**  
**PGI INNOVATIONS**

**wayfair**  
**TRANE**  
**VIVID ev**  
**G&G DELIVERY SERVICES INC**  
**PGI INNOVATIONS**

**wayfair**  
**TRANE**  
**VIVID ev**  
**G&G DELIVERY SERVICES INC**  
**PGI INNOVATIONS**

**wayfair**  
**TRANE**  
**VIVID ev**  
**G&G DELIVERY SERVICES INC**  
**PGI INNOVATIONS**

**wayfair**  
**TRANE**  
**VIVID ev**  
**G&G DELIVERY SERVICES INC**  
**PGI INNOVATIONS**

**wayfair**  
**TRANE**  
**VIVID ev**  
**G&G DELIVERY SERVICES INC**  
**PGI INNOVATIONS**

**wayfair**  
**TRANE**  
**VIVID ev**  
**G&G DELIVERY SERVICES INC**  
**PGI INNOVATIONS**

**wayfair**  
**TRANE**  
**VIVID ev**  
**G&G DELIVERY SERVICES INC**  
**PGI INNOVATIONS**

128

75

GULF COAST TOWN CENTER



# PRESENTED BY



COMMERCIAL REAL ESTATE SERVICES



*Capital Partners is an industry-leading, Minneapolis-based, commercial real estate developer, investor, and operator. For nearly three decades, Capital Partners has acquired, developed, and managed more than \$1.5 billion of institutional quality industrial property totaling more than 14 million square feet. Capital Partners' investment platform includes ownership of industrial assets, development, asset management, property management services, and full in-house accounting services.*



**BOB JOHNSTON, SIOR**  
PRINCIPAL  
(239) 210-7601  
BJOHNSTON@LEE-ASSOCIATES.COM



**JERRY MESSONNIER, SIOR**  
PRINCIPAL  
(239) 210-7610  
JMESSONNIER@LEE-ASSOCIATES.COM



**FRANK V. MARTONE**  
VICE PRESIDENT  
(239) 210-7605  
FMARTONE@LEE-ASSOCIATES.COM

**LEE & ASSOCIATES | NAPLES - FT. MYERS**

LEE-FL.COM

FORT MYERS, FL 33966



The information and details contained herein have been obtained from third-party sources believed to be reliable, however, Lee & Associates has not independently verified its accuracy. Lee & Associates makes no representations, guarantees, or express or implied warranties of any kind regarding the accuracy or completeness of the information and details provided herein, including but not limited to, the implied warranty of suitability and fitness for a particular purpose. Interested parties should perform their own due diligence regarding the accuracy of the information. The information provided herein, including any sale or lease terms, is being provided subject to errors, omissions, changes of price or conditions, prior sale or lease, and withdrawal without notice. Third-party data sources: CoStar Group, Inc. and Lee Proprietary Data. © Copyright 2019 Lee & Associates all rights reserved.