

FOR LEASE



FOR LEASE

26866 LEWES GEORGETOWN HWY, HARBESON, DE 19951



FOR LEASE

01 Building Summary

Building Summary

THE SPACE

Location 26866 Lewes Georgetown Hwy
Harbeson, DE 19951

HIGHLIGHTS

- ⇒ Unit #5 1,500 - 3,000 +/- SF
- ⇒ MLS # DESU2061666
- ⇒ Zoned: CR-1
- ⇒ Price: Proposed \$12.00 PSF & \$1.60 PSF CAM
- ⇒ Secure your space today!

POPULATION

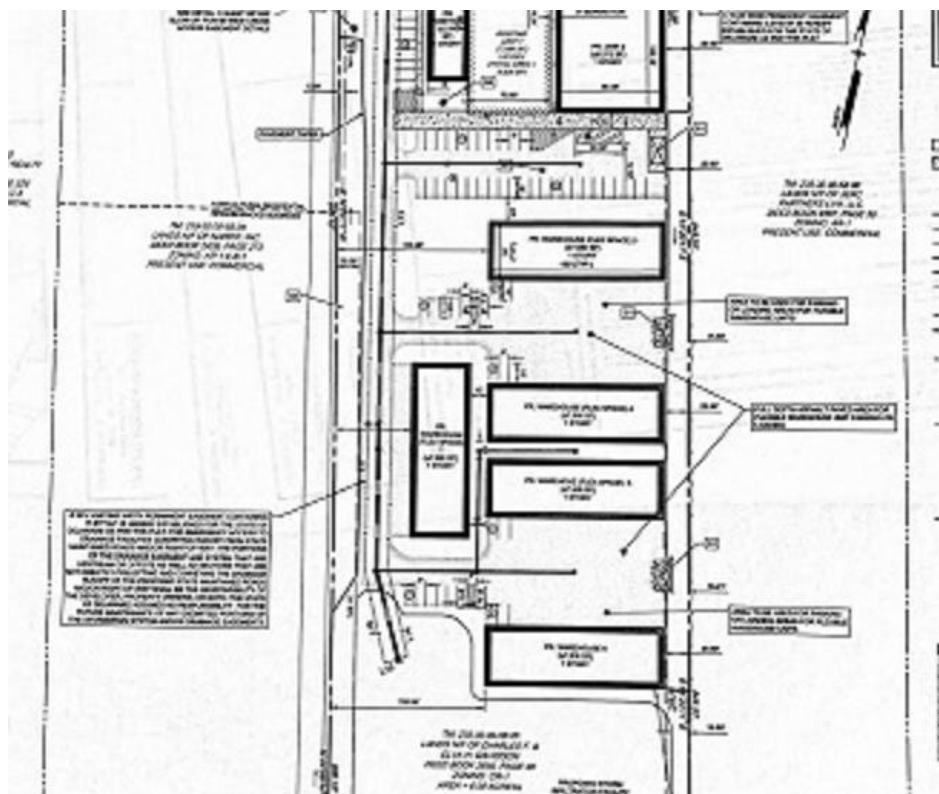
1.00 MILE	3.00 MILE	5.00 MILE
1,932	8,769	32,021

AVERAGE HOUSEHOLD INCOME

1.00 MILE	3.00 MILE	5.00 MILE
\$88,810	\$100,595	\$114,440

NUMBER OF HOUSEHOLDS

1.00 MILE	3.00 MILE	5.00 MILE
878	3,676	14,050



FOR LEASE

02 Property Description

Location Summary

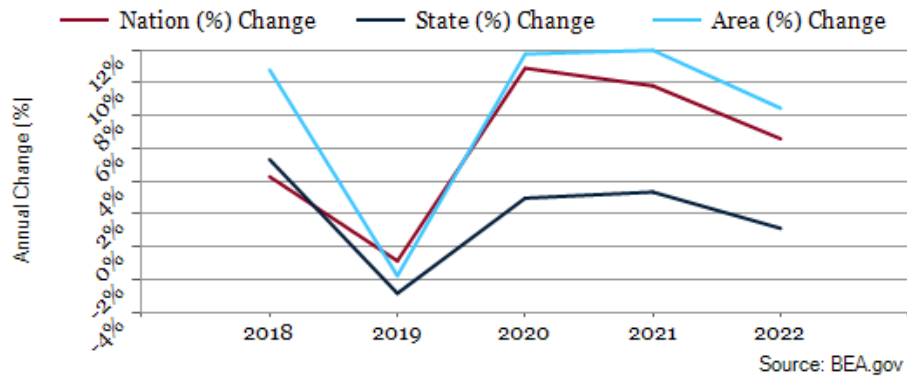
Aerial Map

Property Images

Largest Employers

Perdue Farms	500
Beebe Healthcare	500
Chesapeake Utilities Corporation	500
Allen Harim Foods	500
Piedmont Airlines, Inc.	500
Bayhealth Medical Center, Inc.	500
Walmart	10,000
McDonald's	10,000

Sussex County GDP Trend





MAP OUT OF DATE

This map needs refreshing due to an address change or related change.

To fix > edit the map > click "Refresh" if it appears and then "Save"



FOR LEASE

CONFIDENTIALITY and DISCLAIMER

All information contained herein is believed to be accurate, however was obtained from third parties and R & R Commercial Realty, Inc. does not warrant as to the accuracy submitted, subject to changes or modification without notice. Listing Broker represents the sellers interest.

Exclusively Marketed by:

Keith Walpole

R&R Commercial Realty

(302) 236-7053

keithwalpole@yahoo.com



<http://www.randrcommercialrealty.com>

powered by CREOP