

36555 AMRHEIN ROAD
LIVONIA, MICHIGAN



**SIGNATURE
ASSOCIATES**
KNOW SIGNATURE | KNOW RESULTS

INDUSTRIAL FOR SALE
147,000 Square Feet on 12.49 Acres

OUTSTANDING CRANE FACILITY



PROPERTY FEATURES

- 147,000 square feet with 8,125 square feet office
- 12.49 acres of industrially zoned land
- (3) crane bays: 65' wide, 25' clear height
- (1) crane bay: 60' wide, 35' clear height
- (10) interior 10-ton cranes
- (1) exterior 20-ton gantry crane
- Deisel powered generator
- Two drive through offloading bays
- 1500 amps, 240/480 volts, 3-phase power (estimated)
- Several private offices and cubicles
- Near I-96/I-275/M-14 interchanges
- Sale Price: \$11,025,000 (\$75.00/sq. ft.)



For more information, please contact:

STEVE GORDON

(248) 948 0101

sgordon@signatureassociates.com

JACK TOWNSEND

(248) 948 0115

jtownsend@signatureassociates.com

SIGNATURE ASSOCIATES

One Towne Square, Suite 1200

Southfield, MI 48076

www.signatureassociates.com

36555 Amrhein Road – Livonia, Michigan

Industrial For Sale

147,000
Square Feet
AVAILABLE

Additional Photos



For more information, please contact:

STEVE GORDON

(248) 948 0101

sgordon@signatureassociates.com

JACK TOWNSEND

(248) 948 0115

jtownsend@signatureassociates.com

SIGNATURE ASSOCIATES

One Towne Square, Suite 1200

Southfield, MI 48076

www.signatureassociates.com

Information is subject to verification and no liability for errors or omissions is assumed. Price is subject to change and listing withdrawal.

36555 Amrhein Road – Livonia, Michigan

Industrial For Sale

147,000
Square Feet
AVAILABLE

Additional Photos



For more information, please contact:

STEVE GORDON

(248) 948 0101

sgordon@signatureassociates.com

JACK TOWNSEND

(248) 948 0115

jtownsend@signatureassociates.com

SIGNATURE ASSOCIATES

One Towne Square, Suite 1200

Southfield, MI 48076

www.signatureassociates.com

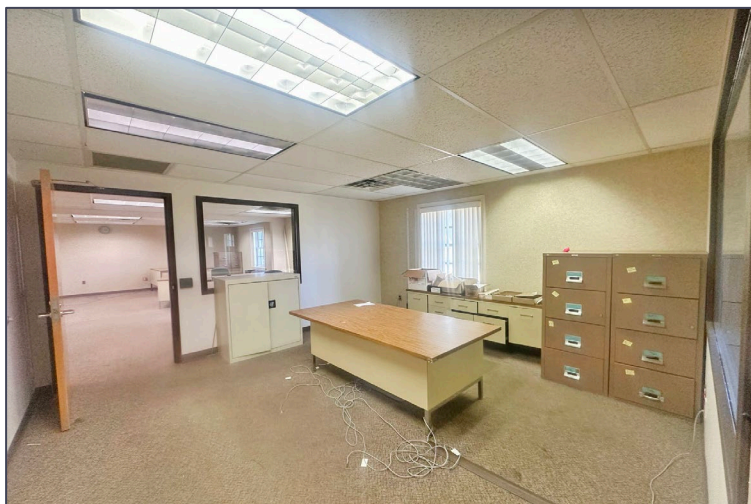
Information is subject to verification and no liability for errors or omissions is assumed. Price is subject to change and listing withdrawal.

36555 Amrhein Road – Livonia, Michigan

Industrial For Sale

147,000
Square Feet
AVAILABLE

Interior Photos



For more information, please contact:

STEVE GORDON

(248) 948 0101

sgordon@signatureassociates.com

JACK TOWNSEND

(248) 948 0115

jtownsend@signatureassociates.com

SIGNATURE ASSOCIATES

One Towne Square, Suite 1200

Southfield, MI 48076

www.signatureassociates.com

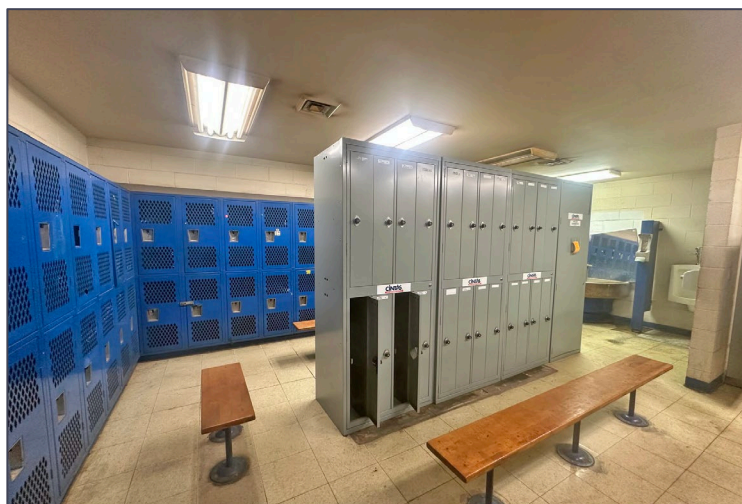
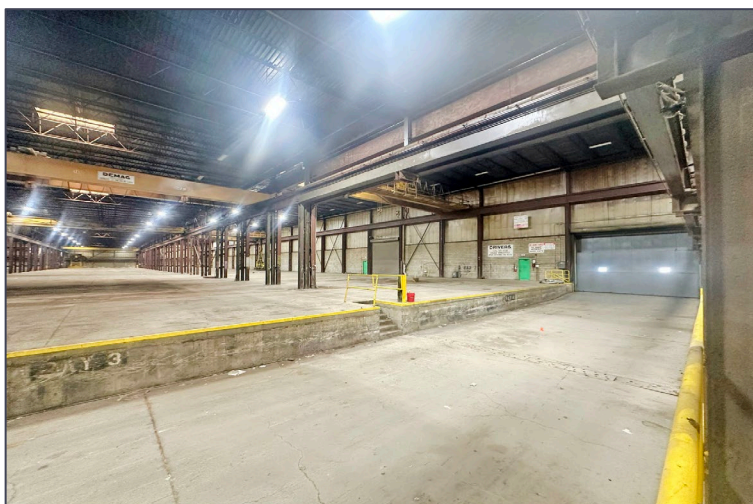
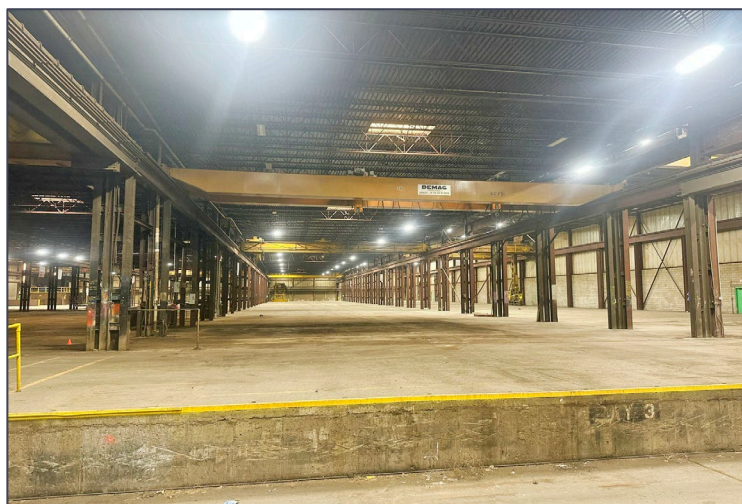
Information is subject to verification and no liability for errors or omissions is assumed. Price is subject to change and listing withdrawal.

36555 Amrhein Road – Livonia, Michigan

Industrial For Sale or Lease

147,000
Square Feet
AVAILABLE

Interior Photos



For more information, please contact:

STEVE GORDON

(248) 948 0101

sgordon@signatureassociates.com

JACK TOWNSEND

(248) 948 0115

jtownsend@signatureassociates.com

SIGNATURE ASSOCIATES

One Towne Square, Suite 1200

Southfield, MI 48076

www.signatureassociates.com

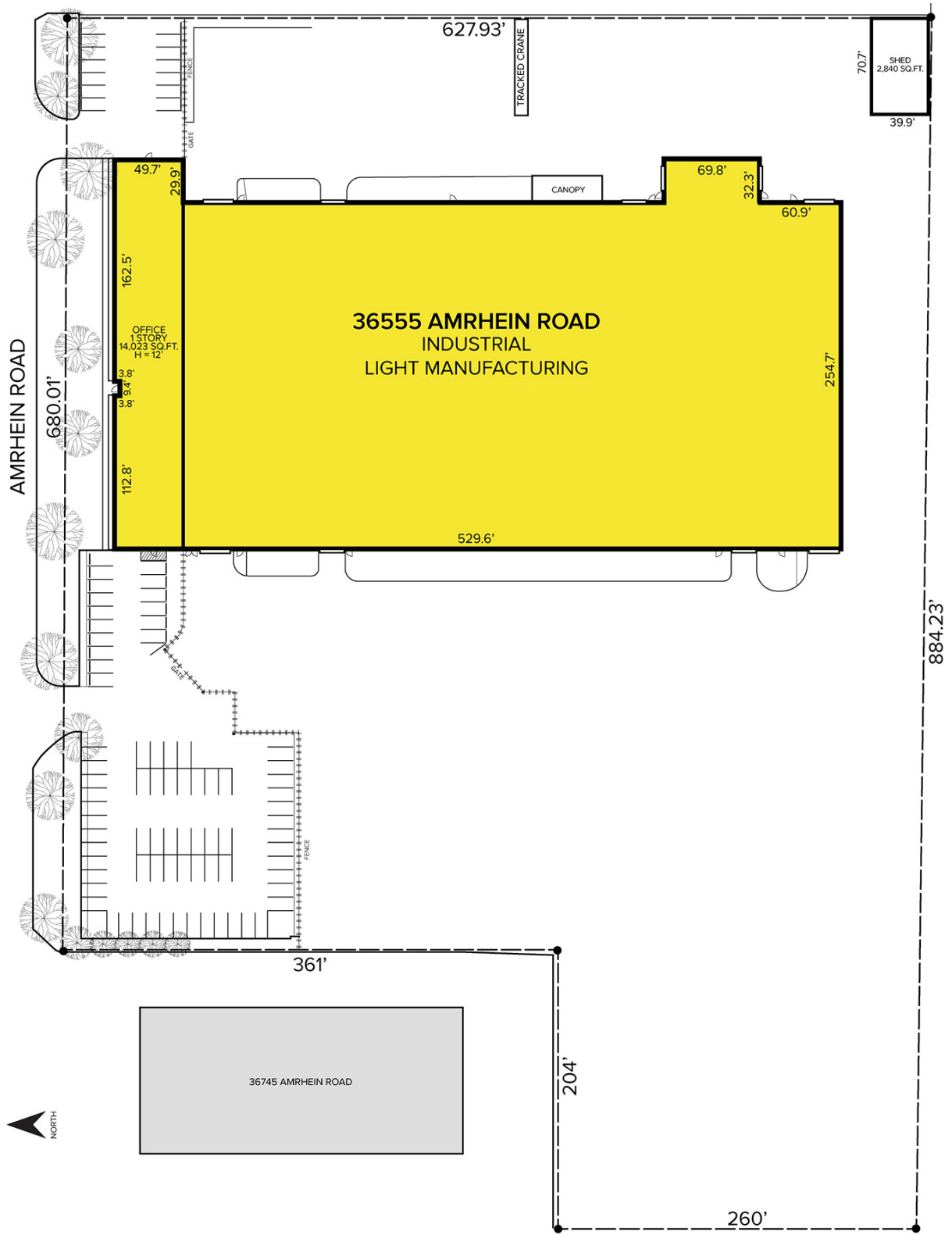
Information is subject to verification and no liability for errors or omissions is assumed. Price is subject to change and listing withdrawal.

36555 Amrhein Road – Livonia, Michigan

Industrial For Sale

147,000
Square Feet
AVAILABLE

Site Plan



For more information, please contact:

STEVE GORDON

(248) 948 0101

sgordon@signatureassociates.com

JACK TOWNSEND

(248) 948 0115

jtownsend@signatureassociates.com

SIGNATURE ASSOCIATES

One Towne Square, Suite 1200

Southfield, MI 48076

www.signatureassociates.com

36555 Amrhein Road – Livonia, Michigan

Industrial For Sale

147,000
Square Feet
AVAILABLE

Aerial



For more information, please contact:

STEVE GORDON

(248) 948 0101

sgordon@signatureassociates.com

JACK TOWNSEND

(248) 948 0115

jtownsend@signatureassociates.com

SIGNATURE ASSOCIATES

One Towne Square, Suite 1200

Southfield, MI 48076

www.signatureassociates.com