

5900 MT. ELLIOTT STREET
DETROIT, MICHIGAN

INDUSTRIAL FOR LEASE
3,000 Square Feet Available



**SIGNATURE
ASSOCIATES**
KNOW SIGNATURE | KNOW RESULTS



PROPERTY FEATURES

- 3,000 square feet available
- 14' clear height
- 220 amps, 3-phase power
- Well located with immediate access to I-94
- Clean shop space
- Zoned M4
- Lease Rate: \$3,500/month Gross



For more information, please contact:

JOE STACK
(248) 359 0615
jstack@signatureassociates.com

CHRIS MONSOUR
(248) 948 0107
cmonsour@signatureassociates.com

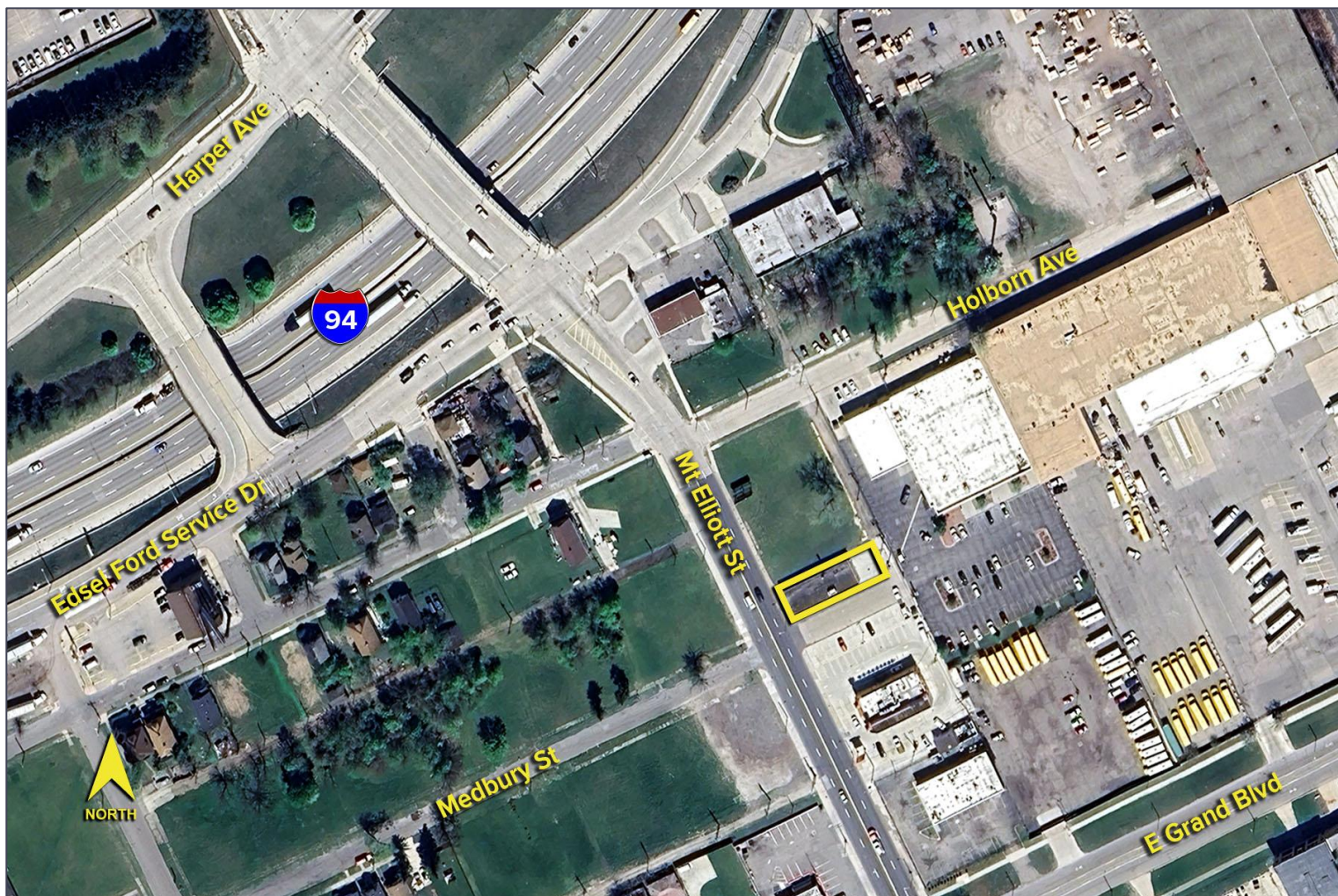
SIGNATURE ASSOCIATES
One Towne Square, Suite 1200
Southfield, MI 48076
www.signatureassociates.com

5900 Mt. Elliott Street – Detroit, Michigan

Industrial For Lease

3,000
Square Feet
AVAILABLE

Aerial



For more information, please contact:

JOE STACK
(248) 359 0615
jstack@signatureassociates.com

CHRIS MONSOUR
(248) 948 0107
cmonsour@signatureassociates.com

SIGNATURE ASSOCIATES
One Towne Square, Suite 1200
Southfield, MI 48076
www.signatureassociates.com

Information is subject to verification and no liability for errors or omissions is assumed. Price is subject to change and listing withdrawal.