



FOR SALE

99 WOLCOTT RD. LEVITTOWN, NY 11756

EXECUTIVE SUMMARY

A unique opportunity to acquire a fully operational, long-established automotive repair shop located right off Hempstead Tpke on Wolcott Rd. The property is equipped with two lifts and includes a brand-new inspection machine. Well maintained and positioned for a seamless transition, this shop is ideal for an owner-operator looking to step into a proven business with a loyal local customer base. Owner financing may be available for qualified buyers.

PROPERTY DETAILS

Building Size: +/- 1,500 SF

Lot Size: +/- 0.23 Acres

Frontage: 102'

Zoning: Commercial / Automotive

RE Taxes (2025): \$36,179 /Yr

ASKING PRICE: \$1,125,000

TURNKEY ! AUTOMOTIVE REPAIR SHOP

- 2 Bays
- Brand-new inspection machine
- Established Customer Base
- Well-Maintained Facility
- Ample Parking
- Minutes from Hempstead Turnpike and Wantagh Pkwy
- Owner Financing Available

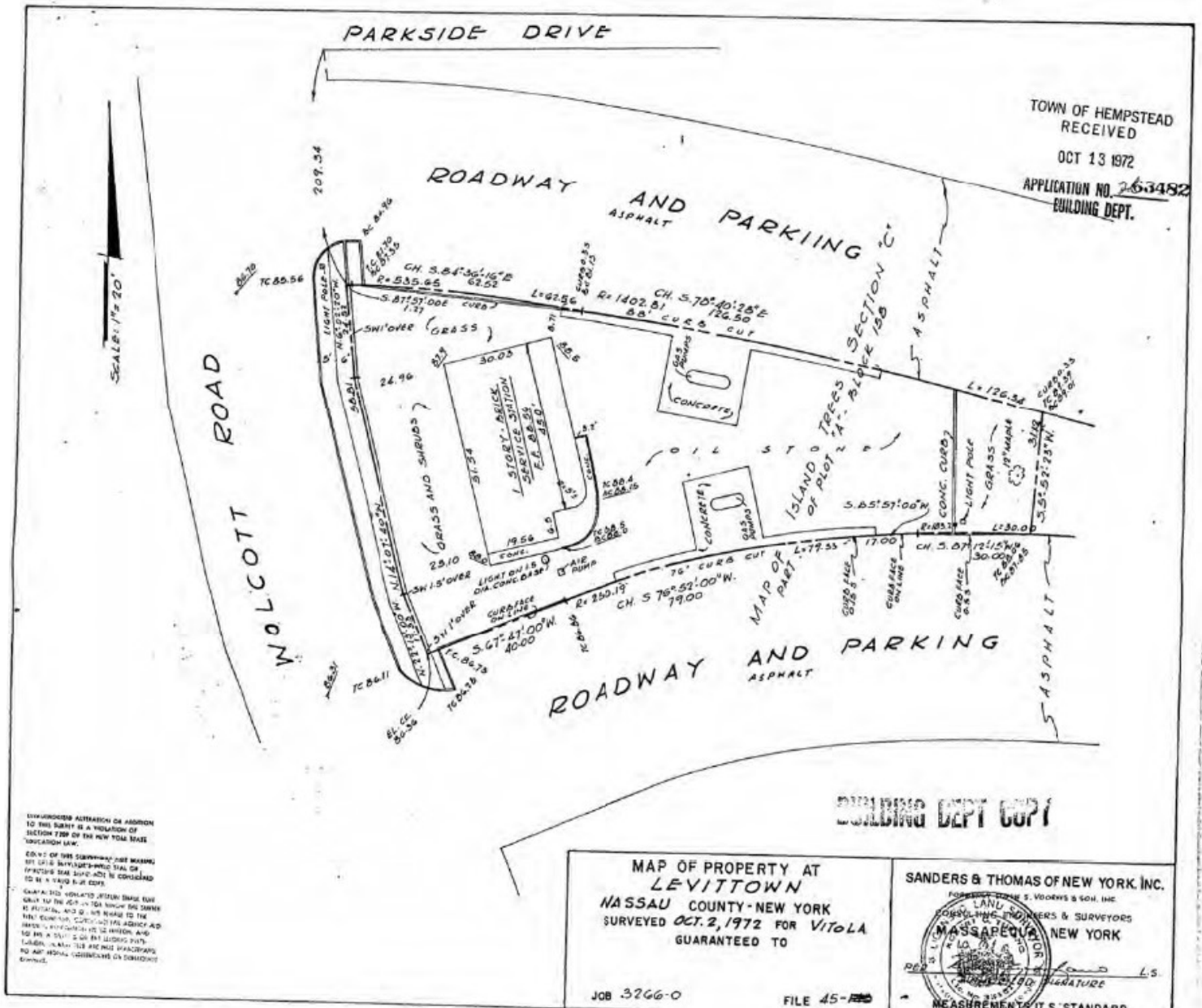
Jason Merrell

Commercial Associate
jason@islandassociates.com
631 -767-3033

ia
Island Associates Real Estate Inc.

Island Associates Real Estate Inc.

444 Route 111, Suite 1, Smithtown, NY 11787
631-982-2100
www.islandassociates.com



EXTERIOR PHOTO / AERIAL VIEW



Jason Merrell

Commercial Associate
jason@islandassociates.com
631-767-3033

Island Associates Real Estate Inc.

444 Route 111, Suite 1, Smithtown, NY 11787
631-982-2100
www.islandassociates.com