

128 28<sup>TH</sup> STREET SW  
WYOMING, MICHIGAN

RETAIL/BUSINESS FOR SALE  
2,460 Square Feet Available



**SIGNATURE  
ASSOCIATES**  
KNOW SIGNATURE | KNOW RESULTS

**BOSNA EXPRESS**

**PRICE REDUCED**



## PROPERTY FEATURES

- 2,460 total square feet available
- Two parcels totaling 0.18 acres included
- Zoned B-2
- Built in 1980; remodeled in 2021
- Sale Price: ~~\$750,000~~ \$495,000 (\$201.22/sf)

**Comments:** Full turn-key establishment with over 25+ years in the business. Comes fully equipped, with 16' hood system, tables, prep-tables and all equipment. Owner just put over \$45,000 into new Air Makeup System, Hood System & Fans. Furnace installed in 2017 with HVAC, roof and tankless water system in 2018. Owner will review all offers. Store can do over half a million in sales for lunch and dinner only.



For more information, please contact:

**JOE RIZQALLAH**

(616) 822 6310

jrizzqallah@signatureassociates.com

**SIGNATURE ASSOCIATES**

1188 East Paris Ave SE, Suite 220

Grand Rapids, MI 49546

www.signatureassociates.com

# 128 28<sup>th</sup> Street SW - Wyoming, Michigan

## Retail/Business for Sale

2,460  
Square Feet  
AVAILABLE

### Site Plan

## 28TH STREET SW / M-11



For more information, please contact:

**JOE RIZQALLAH**

(616) 822 6310

[jrizqallah@signatureassociates.com](mailto:jrizqallah@signatureassociates.com)

**SIGNATURE ASSOCIATES**

1188 East Paris Ave SE, Suite 220

Grand Rapids, MI 49546

[www.signatureassociates.com](http://www.signatureassociates.com)

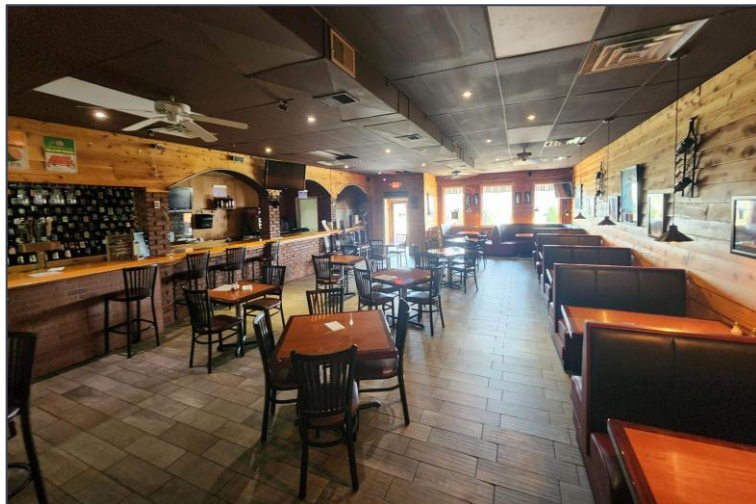


# 128 28<sup>th</sup> Street SW - Wyoming, Michigan

## Retail/Business for Sale

2,460  
Square Feet  
AVAILABLE

### Interior Photos



For more information, please contact:

**JOE RIZQALLAH**

(616) 822 6310

[jrizqallah@signatureassociates.com](mailto:jrizqallah@signatureassociates.com)

**SIGNATURE ASSOCIATES**

1188 East Paris Ave SE, Suite 220

Grand Rapids, MI 49546

[www.signatureassociates.com](http://www.signatureassociates.com)

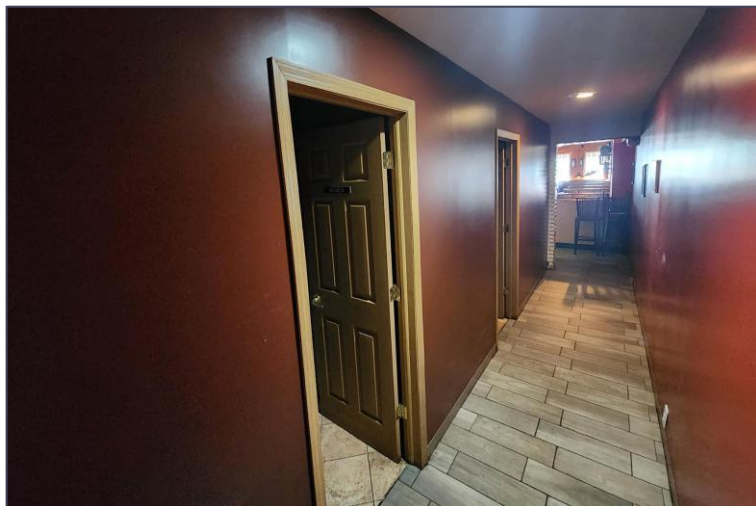


# 128 28<sup>th</sup> Street SW - Wyoming, Michigan

## Retail/Business for Sale

2,460  
Square Feet  
AVAILABLE

### Interior Photos



### Exterior Views



For more information, please contact:

**JOE RIZQALLAH**  
(616) 822 6310  
jrizzqallah@signatureassociates.com

**SIGNATURE ASSOCIATES**  
1188 East Paris Ave SE, Suite 220  
Grand Rapids, MI 49546  
www.signatureassociates.com



# 128 28<sup>th</sup> Street SW - Wyoming, Michigan

Retail/Business for Sale

2,460  
Square Feet  
AVAILABLE

Aerial



DEMOGRAPHICS			TRAFFIC COUNTS (TWO-WAY)	
	POPULATION	MED. HH INCOME		
1 MILE	13,962	\$61,538	43,242	28 <sup>th</sup> St SW west of Buchanan Ave SW
3 MILE	126,449	\$62,141	38,343	28 <sup>th</sup> St SW east of Buchanan Ave SW
5 MILE	294,288	\$69,546	9,050	Buchanan Ave SW north of 28 <sup>th</sup> St SW
			6,754	Buchanan Ave SW south of 28 <sup>th</sup> St Sw

For more information, please contact:

**JOE RIZQALLAH**  
(616) 822 6310  
jrizzqallah@signatureassociates.com

**SIGNATURE ASSOCIATES**  
1188 East Paris Ave SE, Suite 220  
Grand Rapids, MI 49546  
www.signatureassociates.com

Information is subject to verification and no liability for errors or omissions is assumed. Price is subject to change and listing withdrawal.