

# 1100G

**YOUR OWN  
TOP FLOOR AVAILABLE**

9,788 SF WITH 4 SIDES OF GLASS



**MOVE-IN READY  
SPEC SUITES**

FROM 2,087 SF - 4,232 SF

The logo consists of the number '1100' in white and the letter 'G' in orange, all in a bold, sans-serif font.

>> TAKE THE VIRTUAL TOUR  
& SEE FOR YOURSELF

TOP OF THE LINE  
FINISHES >>

# Welcome to your new office.

On the Corner of 11<sup>TH</sup> & G Streets, NW  
A Full Amenity Package with Unbeatable Value:

**Spec Suites 2,087 - 4,232 SF**  
**Asking Rates in the Low \$50's**

SUITE 1010

3,837 SF Available Immediately

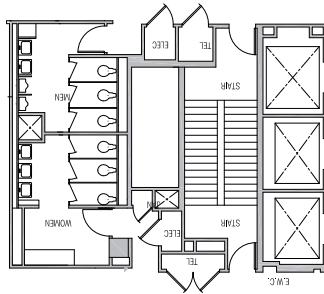
360°  
VIRTUAL TOUR

# 11TH FLOOR | 9,788 SF

G STREET

## SUITE 1100

9,788 SF



POTENTIAL TERRACE

11TH STREET

ABUNDANT WINDOW LINES

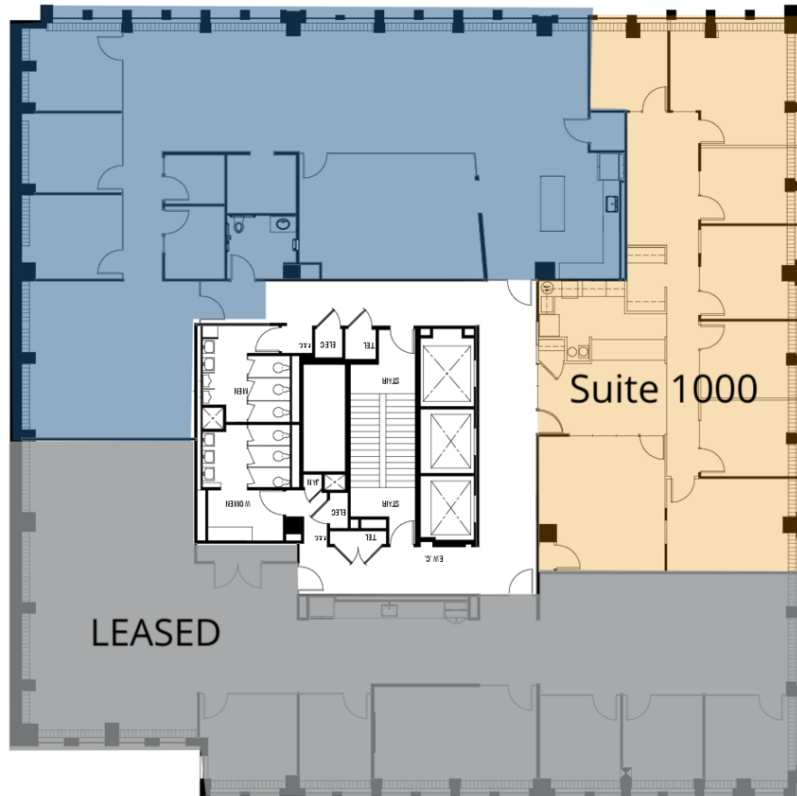


# Top Floor. With a View.

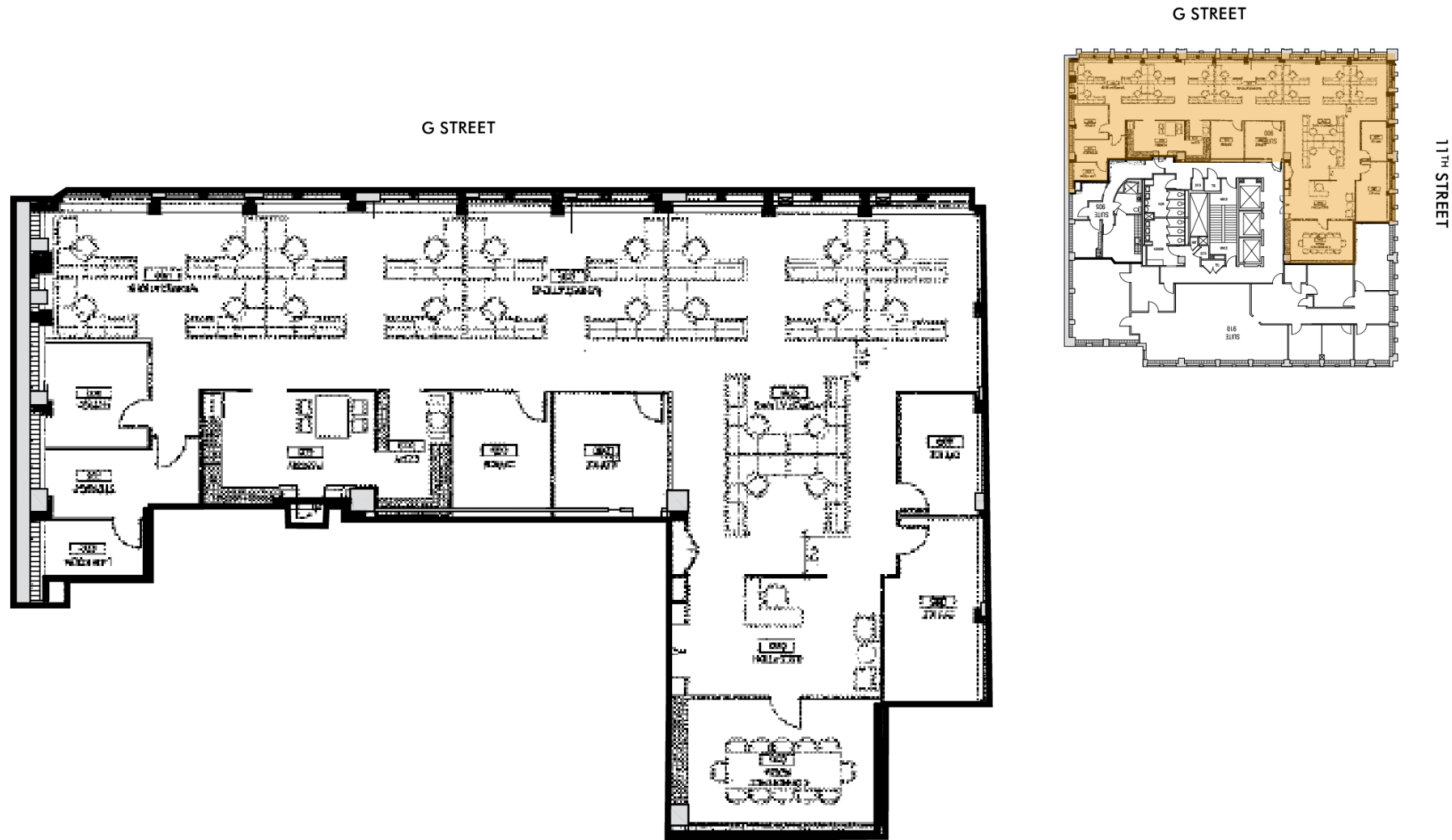
Full Floor Available in Shell Condition.

SPEC SUITE 1010

SPEC SUITE 1030



SUITE	SIZE	DESCRIPTION	VIRTUAL TOUR
■ Suite 1000	2,599 SF	Available 10/2024. Can be combined with Spec Suite 1010.	
■ Spec Suite 1010	3,837 SF	Brand-new spec suite with prime window line overlooking G Street and direct elevator exposure. Mostly open plan with featuring three interior offices, two huddle/zoom rooms, large conference room, pantry, and two bullpen areas for open work stations.	<a href="#">View Here</a>



**SUITE**

Suite 900

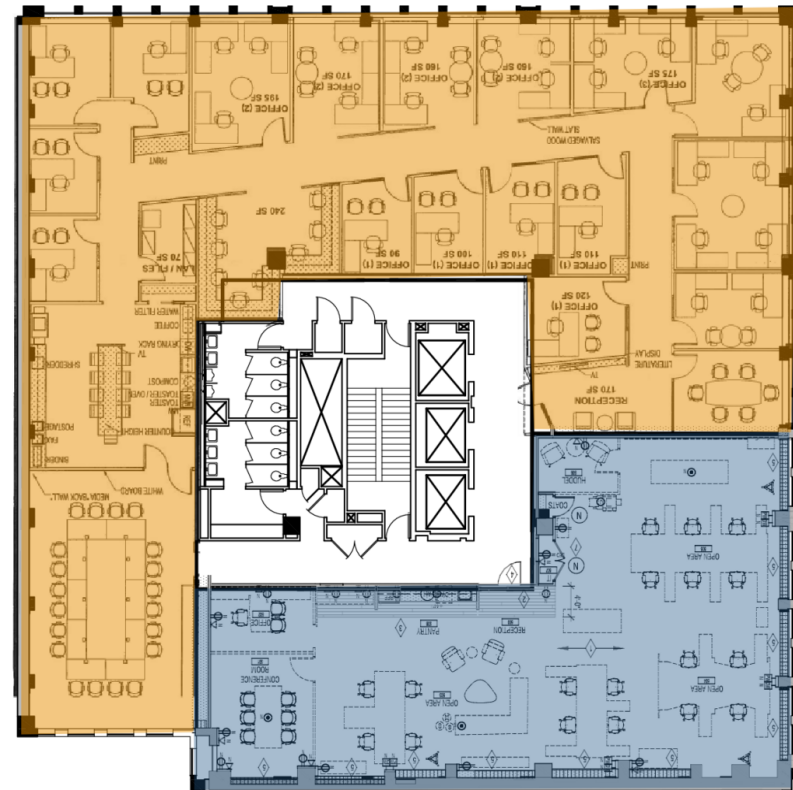
**SIZE**

10,231 SF

**DESCRIPTION**

Available Immediately

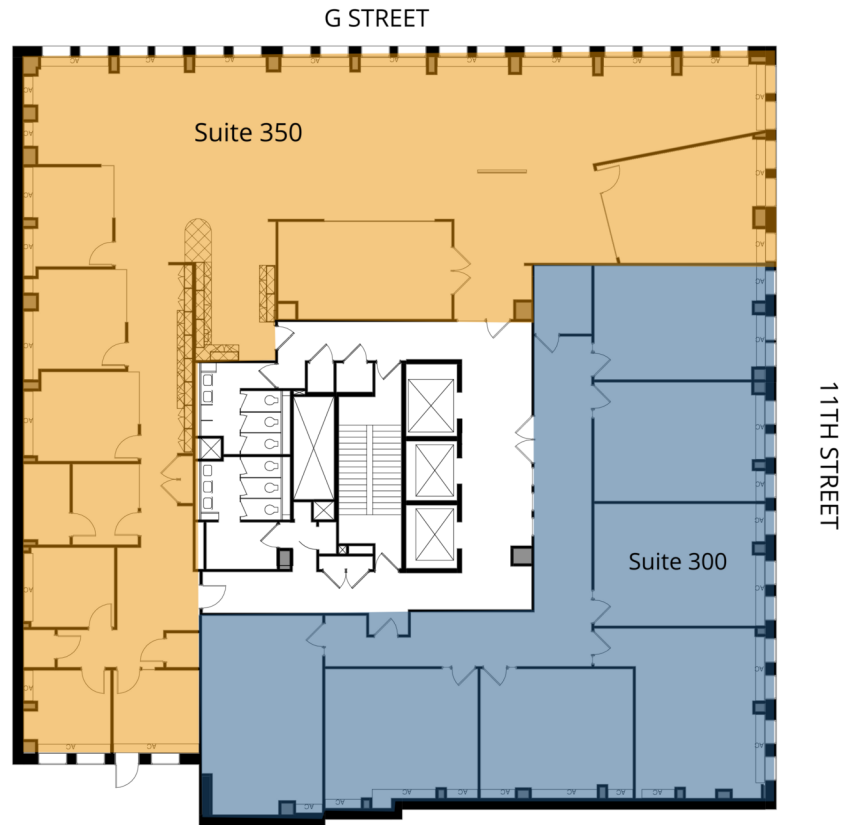
G STREET



11TH STREET

SUITE	SIZE	DESCRIPTION	VIRTUAL TOUR
■ Suite 500	6,641 SF	Built-out space overlooking 11th and G Streets with direct elevator exposure. Office-intensive build out with large conference room in-place.	<a href="#">View Here</a>
■ Suite 535	3,239 SF	Open space plan with direct elevator exposure on the front of the building! Existing build-out has very high-end finishes with an eight-person conference room, two private offices and pantry. Ready for immediate occupancy!	

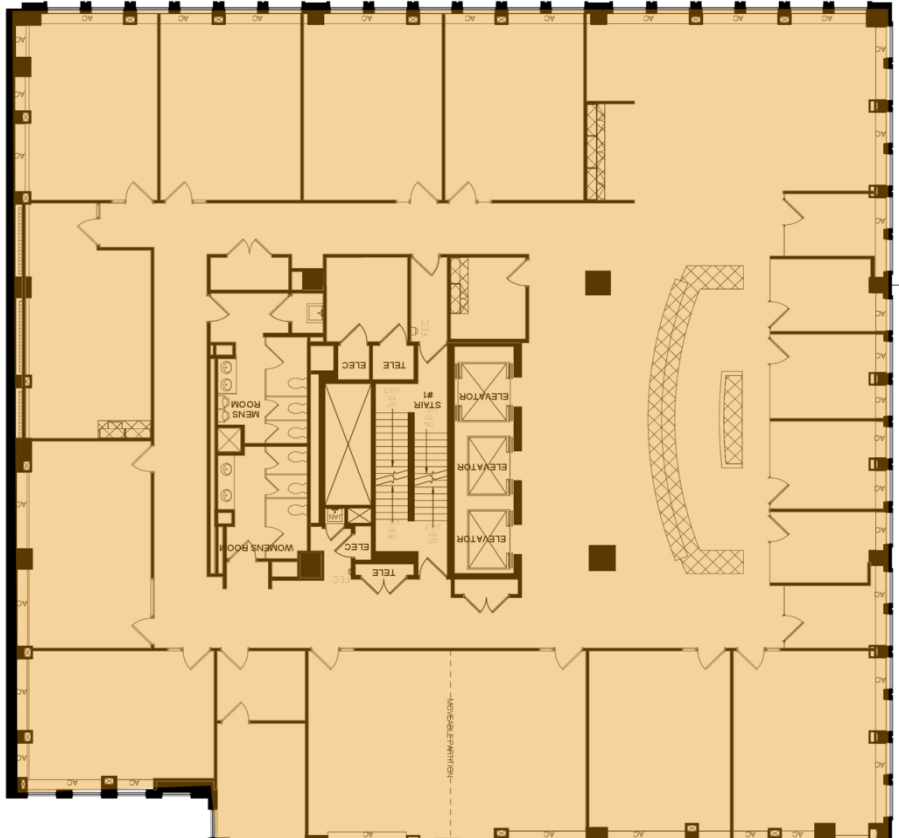




SUITE	SIZE	DESCRIPTION	VIRTUAL TOUR
■ Suite 300	4,190 SF	Plug-and-play opportunity for an educational user. Space overlooks 11th Street with direct elevator exposure. Seven classrooms existing with supplemental HVAC in-place.	
■ Suite 350	5,867 SF	FURNISHED suite along the prime window line overlooking G Street. Space features reception, large open workspace area, 6 private offices, 3 conference rooms, and large open pantry - with direct elevator exposure!	<a href="#">View Here</a>

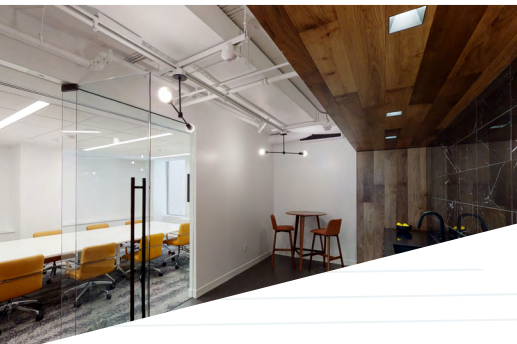


G STREET



11TH STREET

SUITE	SIZE	DESCRIPTION
■ 2nd Floor	10,139 SF	Full floor opportunity for an educational user. Space built-out with large reception area, six windowed offices overlooking 11th Street, ten classrooms, a prayer room, expanded restrooms and supplemental HVAC in-place.



360°  
VIRTUAL TOUR

# Even More Elbow Room.

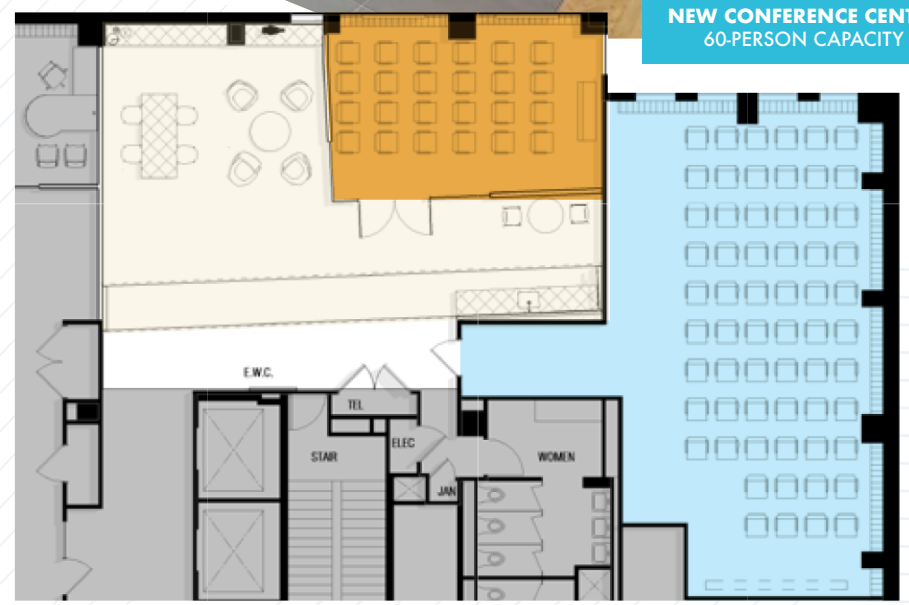
The 6th Floor conference center & lounge will allow tenants to host impromptu meetings, huddle-ups, private calls or client luncheons. With a 24-person executive board room, and 60-person conference center in development, the various workspaces at 1100 G makes it possible for more connections & higher employee satisfaction.

TENANT LOUNGE & COFFEE BAR

EXECUTIVE BOARD ROOM  
24-PERSON

NEW CONFERENCE CENTER  
60-PERSON CAPACITY

**MULTI-FACETED CONFERENCE CENTER**  
Recently Delivered



# 1100G



## OFFICE LEASING 202.513.6700

---

<b>Merrill Turnbull</b>	<a href="mailto:mturnbull@lpc.com">mturnbull@lpc.com</a>	202.513.6713
<b>Adam Biberaj</b>	<a href="mailto:abiberaj@lpc.com">abiberaj@lpc.com</a>	202.513.6736
<b>Tim Whitebread</b>	<a href="mailto:twhitebread@lpc.com">twhitebread@lpc.com</a>	202.513.6712

**MCRE**  
PARTNERS

**Lincoln**