

# MINNESOTA SUPERCOMPUTER CENTER



MIKE MARINOVICH  
612-715-1115

CHRIS GLIEDMAN  
651-261-3482

1200 WASHINGTON AVE, MINNEAPOLIS



# PROPERTY FEATURES

Renovated common areas

On-site parking with surface lot and indoor heated garage

2 roof decks with gas grills

Fiber with strong connectivity tech infrastructure

Building conference room, break room, and shower facility

Secure bike storage

Nearby amenities include: bike and walking trails along the river, Gold Medal Park, multiple restaurants, and the Guthrie Theatre

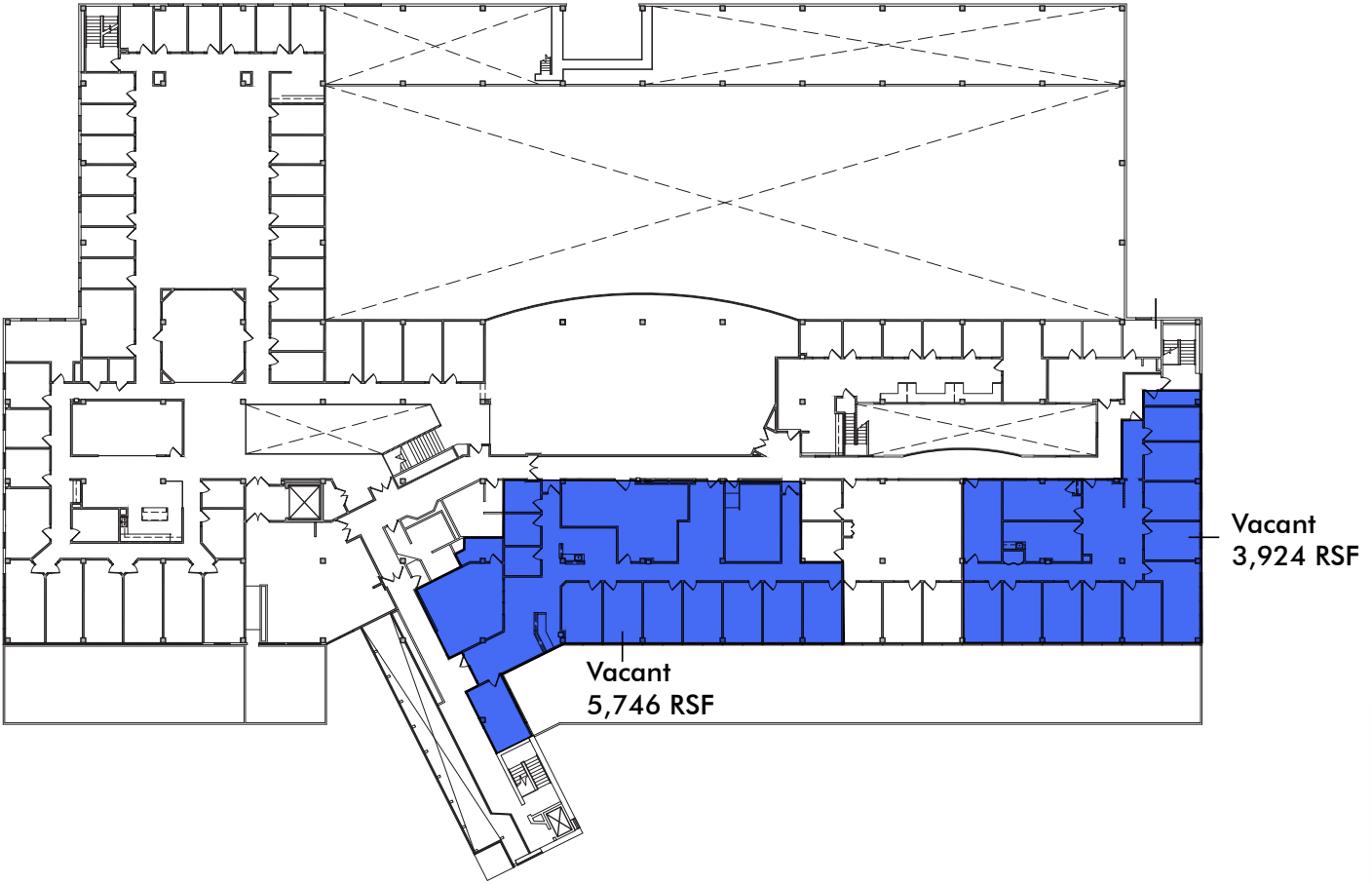


# BUILDING AMENITIES

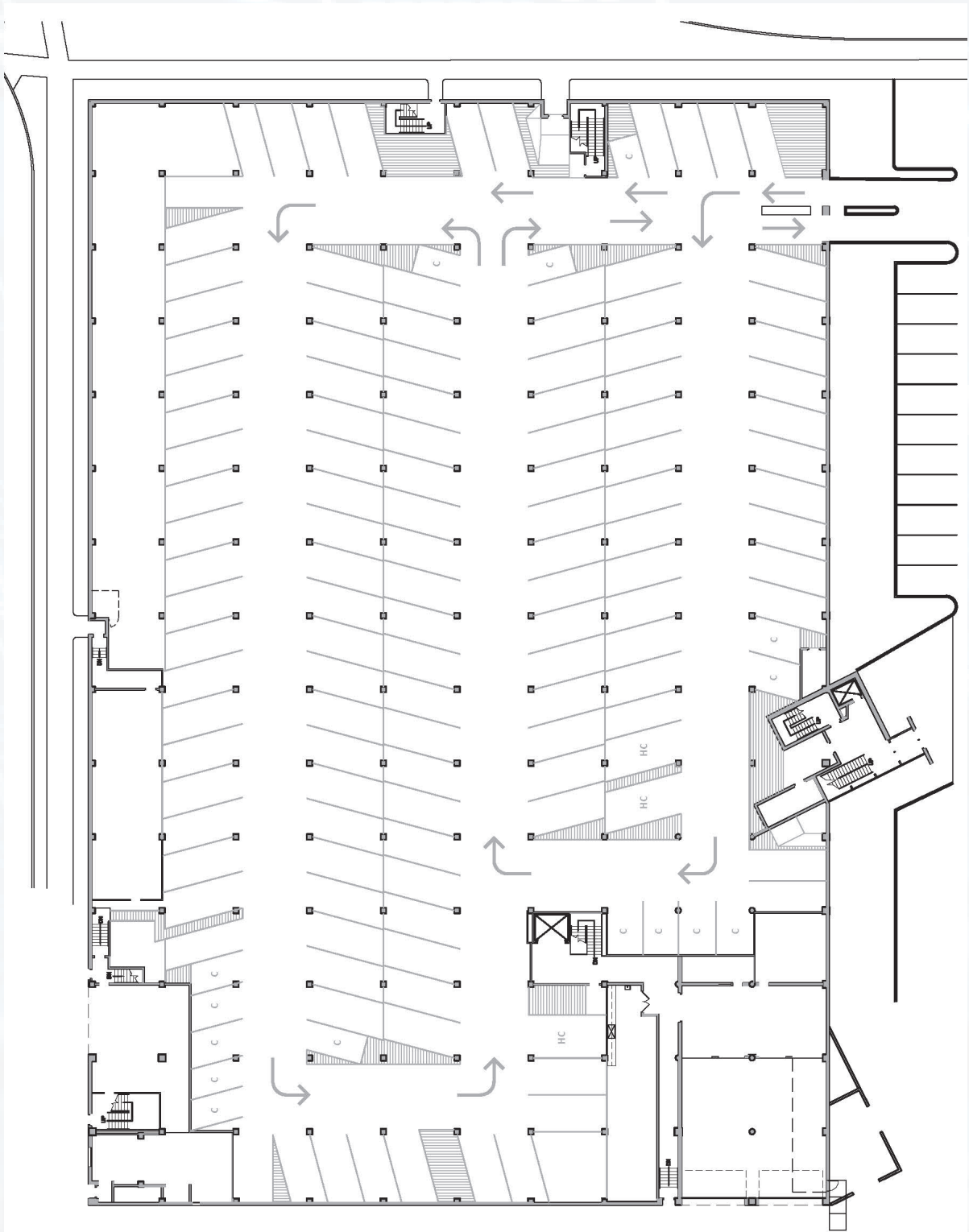


Second Floor

# FLOOR PLANS



Third Floor





**Data Center Availability**

**CenturyLink,  
Time Warner,  
and University of  
Minnesota Fiber**

**Common Area Breakroom**



**Indoor  
Parking Garage**



1200 WASHINGTON AVE, MINNEAPOLIS