



**FOR LEASE**  
**\$24.00 SF/YR (FULL SERVICE)**

GREENWOOD EXECUTIVE PARK

**7475 EAST PEAKVIEW AVENUE BUILDING 10**

Centennial, CO 80111

## PROPERTY HIGHLIGHTS

- 2nd Floor Suite
- Two Private Offices
- Balcony!
- T-1 Internet Service Included
- Recently Renovated
- Very Quiet Professional Atmosphere



AVAILABLE SF

**700 SF**



FULL SERVICE

**\$24/SF**



LEASE TERM

**MIN 3-YEARS**



PARKING

**ABUNDANT**



BUILDING SF

**19,000 SF**



YEAR BUILT/RENO

**1981/2020**

## PROPERTY DESCRIPTION

Beautifully renovated professional suite with a private balcony. Two fully enclosed private offices and an open work/reception area in a very quiet multi-tenant building provide the perfect work environment for all professional services, like attorney's, CPA's, insurance brokers, etc. Signage on main building entry door as well as on directory sign in lobby. Abundant, close-in parking. Full service rent includes all utilities (even T-1 internet service! But not phone) and janitorial.

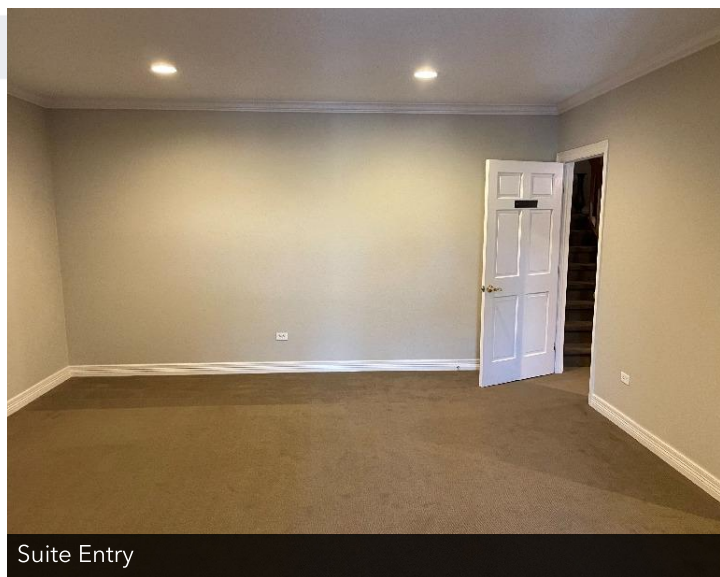
Madison Commercial Properties  
501 S Cherry St. Suite 350, Denver, CO 80246  
720.441.1460 | madisoncommercial.com



## ADDITIONAL PHOTOS



Building Entrance Lobby



Suite Entry



Private Office #1



Private Office #2



Private Office



Open Work/Reception Area

**TODD BROWN**

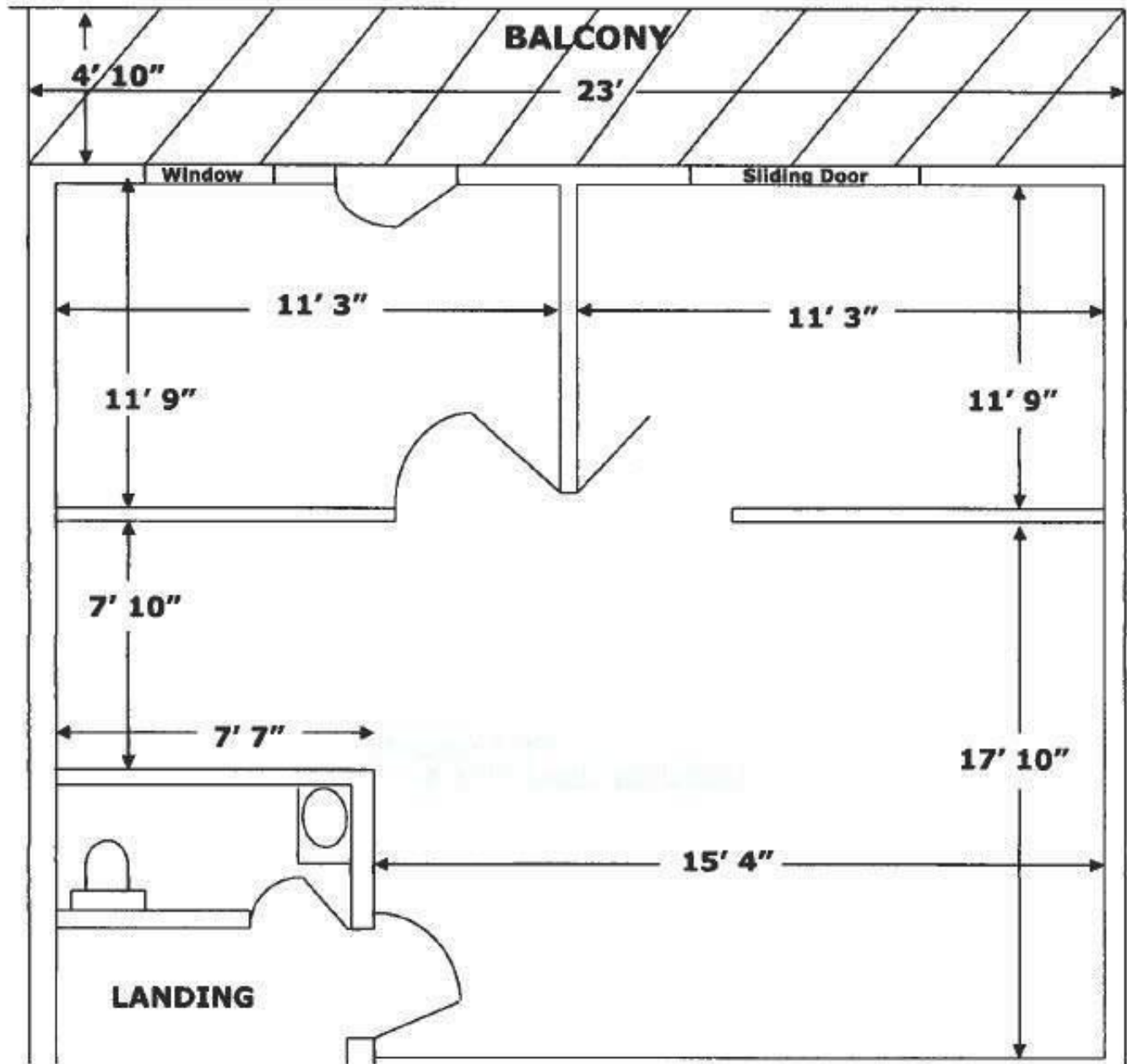
303.916.3955

[tbrown@madisoncommercial.com](mailto:tbrown@madisoncommercial.com)





# FLOOR PLANS

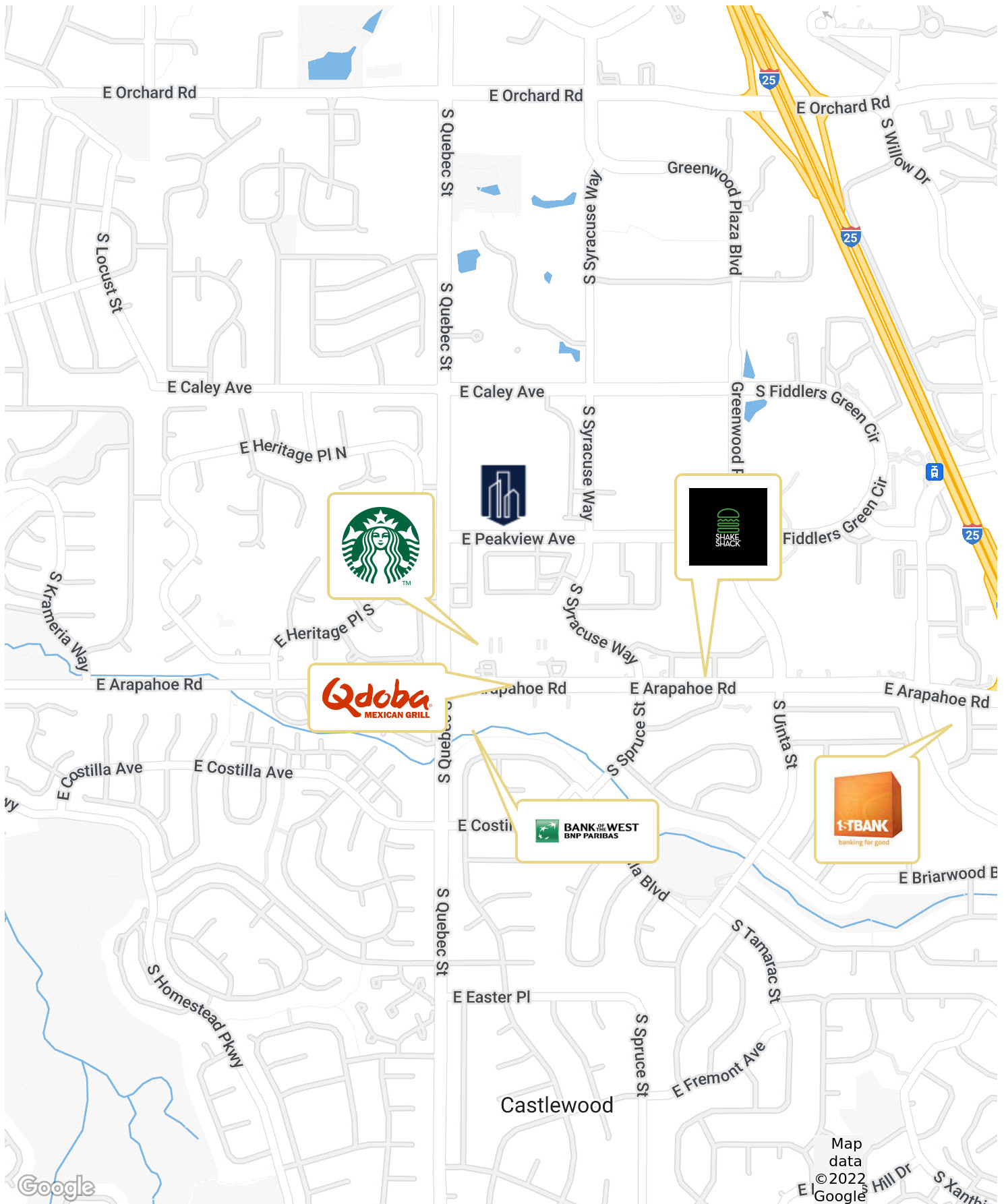


**TODD BROWN**

303.916.3955

tbrown@madisoncommercial.com

# LOCATION MAP



**TODD BROWN**

303.916.3955

tbrown@madisoncommercial.com

