

44000 W. 12 Mile Road

Novi, MI

PREMIER MEDICAL OFFICE BUILDING



WADE LORIMER || 248-357-2508 || Wade.Lorimer@nmrk.com

DANIEL CANVASSER || 248-350-8141 || Daniel.Canvasser@nmrk.com

JOHN EGAL || 248-871-2339 || John.Eagal@nmrk.com

NEWMARK

Class A two-story medical office building with 1,053 – 4,461 SF suites available



PROPERTY HIGHLIGHTS:

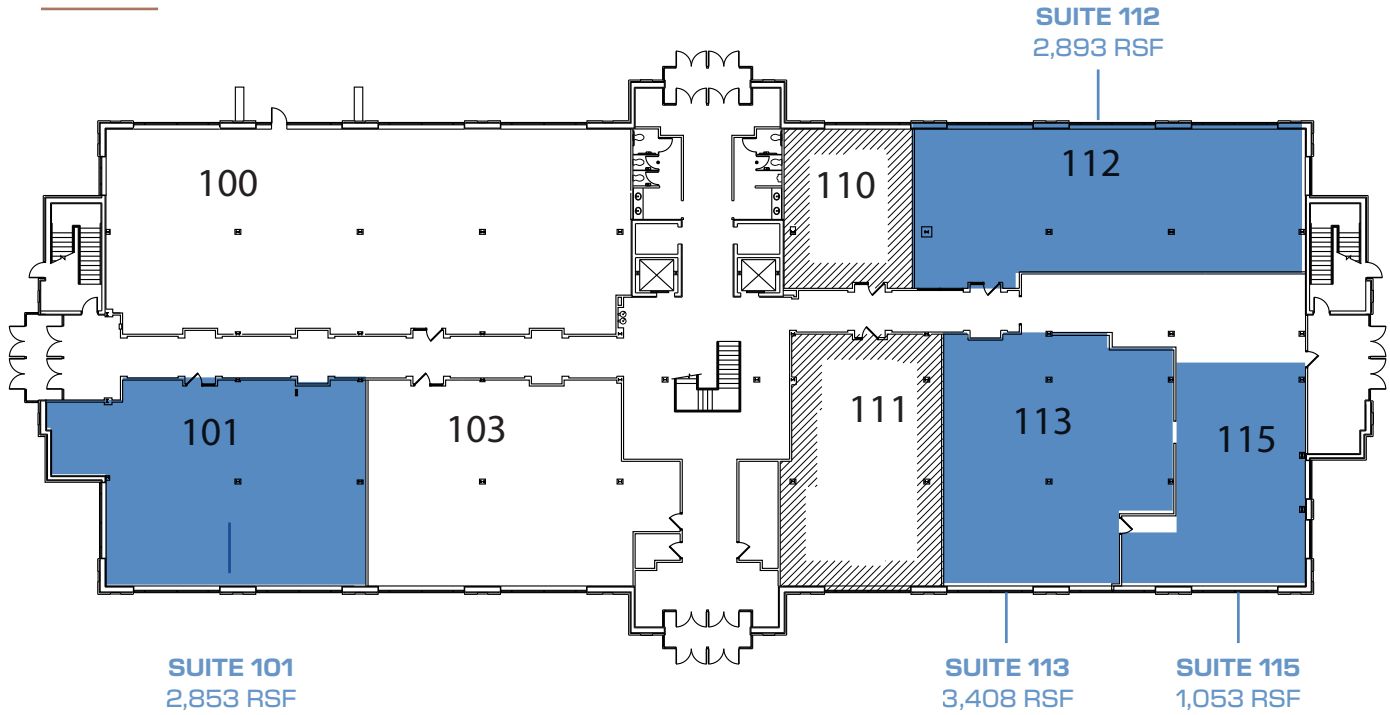
- Great second-generation options
- Class “A” institutionally owned medical office building
- Abundant surface parking with easy access to multiple entrances
- Close proximity to major hospitals and healthcare facilities
- Generous tenant improvement packages
- Exceptional location off 12 Mile Road and Novi Road
- Nearby access off I-96 and M-5 Highways



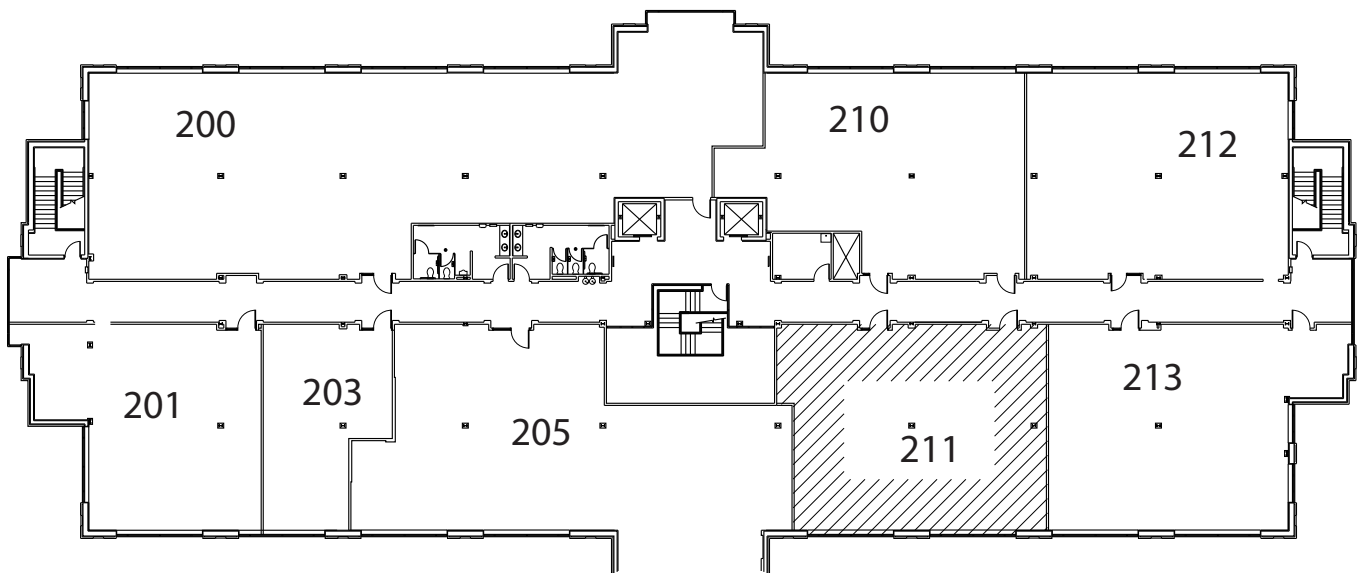
FLOORPLANS

■ = AVAILABLE

1st Floor



2nd Floor



LOCATION



FOR MORE INFORMATION:

Wade Lorimer
248-357-2508
Wade.Lorimer@nrmk.com

Daniel Canvasser
248-350-8141
Daniel.Canvasser@nrmk.com

John Egal
248-871-2339
John.Egal@nrmk.com



The information contained herein has been obtained from sources deemed reliable but has not been verified and no guarantee, warranty or representation, either express or implied, is made with respect to such information. Terms of sale or lease and availability are subject to change or withdrawal without notice.