

**25,600±
SQUARE FOOT
INDUSTRIAL
AVAILABLE**

**SUBLEASE THROUGH
DECEMBER 31, 2026
POTENTIAL FOR LONGER TERM**

**IDEAL LOCATION
MINUTES FROM I-295
& COMMODORE
BARRY BRIDGE**

ALL DEALS CONSIDERED!



AVAILABLE FOR SUBLEASE

730 VETERANS DR.

SWEDESBORO, NJ

Scott Mertz, SIOR
+1 609 413 5647
scott.mertz@naimertz.com

NAI Mertz
21 Roland Avenue | Mount Laurel, NJ 08054
+1 856 234 9600 | naimertz.com

NAIMertz
COMMERCIAL REAL ESTATE SERVICES, WORLDWIDE

AVAILABLE FOR SUBLEASE

730 VETERANS DRIVE

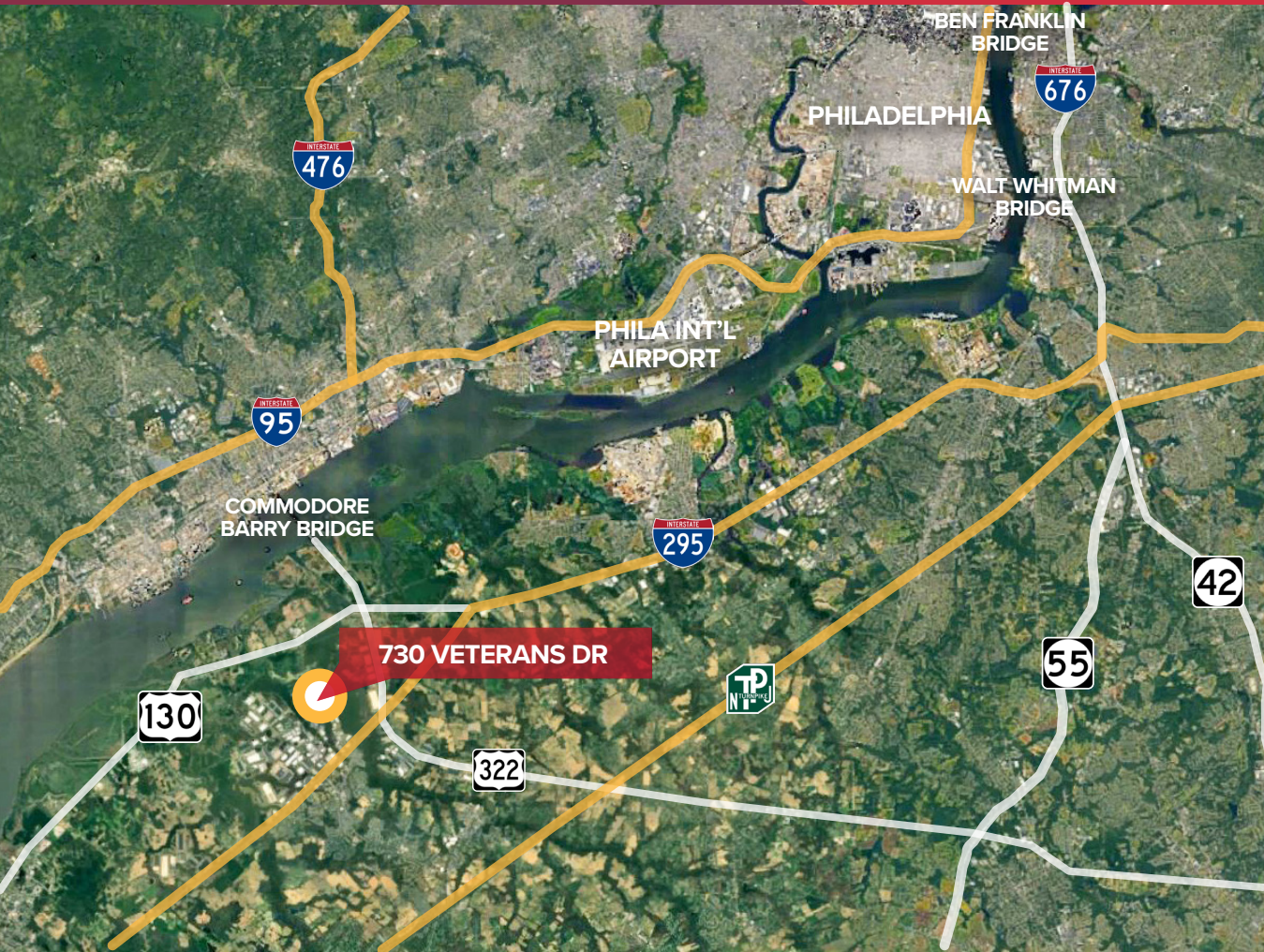
SWEDESBORO, NJ

PROPERTY DESCRIPTION

- 25,600± SF unit available
 - 23,700± SF warehouse
 - 1,900± SF office
- 7.39± acres
- 25'± clear ceiling height
- (3) 10' x 10' tailgate loading docks w/ levelers
- (1) oversize drive-in door
- Restrooms
 - Ladies: 2 toilets, 1 sink
 - Mens: 1 toilet, 1 sink, 1 urinal
- LED lighting
- Potential racking available
- Sublease runs through December 31, 2026. Potential for longer term
- Fully sprinklered
- Public water & sewer
- Ample car parking
- Trailer parking available



LOCATION INFORMATION



Scott Mertz, SIOR

+1 609 413 5647

scott.mertz@naimertz.com

NAI Mertz

21 Roland Avenue | Mount Laurel, NJ 08054

+1 856 234 9600 | naimertz.com

NAIMertz

COMMERCIAL REAL ESTATE SERVICES, WORLDWIDE

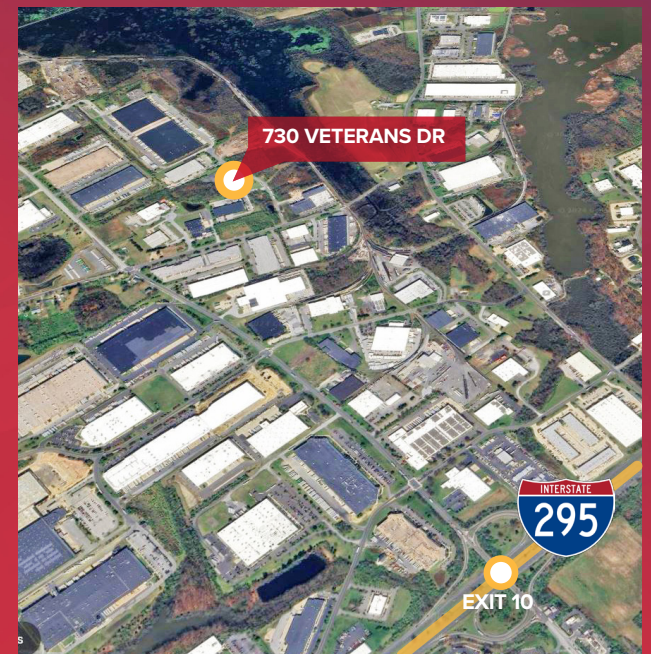
AVAILABLE FOR SUBLEASE

730 VETERANS DR

SWEDESBORO, NJ

Distance to

Route 130	1.3 mi
I-295 (Exit 10)	1.7 mi
Route 322	2.6 mi
Commodore Barry Bridge	3.4 mi
NJ Turnpike (Exit 2)	6.5 mi
I-95	6.7 mi
Philadelphia Int'l Airport	13.8 mi
Philaport (Packer Ave)	22 mi
Center City Philadelphia	24 mi



NO WARRANTY OR REPRESENTATION, EXPRESS OR IMPLIED, IS MADE AS TO THE ACCURACY OF THE INFORMATION CONTAINED HEREIN, AND THE SAME IS SUBMITTED SUBJECT TO ERRORS, OMISSIONS, CHANGE OF PRICE, RENTAL OR OTHER CONDITIONS, PRIOR SALE, LEASE OR FINANCING, OR WITHDRAWAL WITHOUT NOTICE, AND OF ANY SPECIAL LISTING CONDITIONS IMPOSED BY OUR PRINCIPALS NO WARRANTIES OR REPRESENTATIONS ARE MADE AS TO THE CONDITION OF THE PROPERTY OR ANY HAZARDS CONTAINED THEREIN ARE ANY TO BE IMPLIED.