

SOUTHEAST TULA CONTEMPORARY OFFICE/FLEX SPACE FOR LEASE



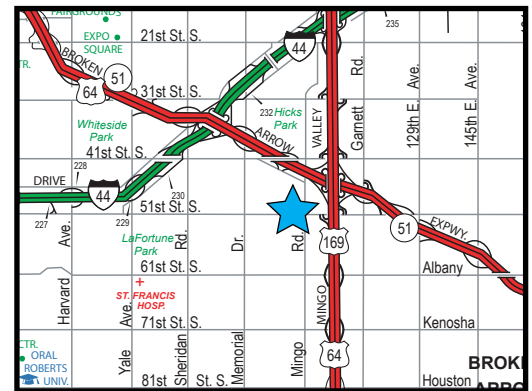
9410 E 51ST ST, TULSA, OK 74145
MARKET PLACE WEST

SIZES

- 1,380 - 7,205 SF
(See floor plan)

FEATURES

- Quality office/flex service center; newly repainted
- Flexibility with lease sizes and expansion needs
- Professional Office configuration with large window offices
- “Drive Up” front door parking convenience
- Exterior security cameras
- Locally owned and managed
- Building signage
- Abundant Parking
- Premier Southeast 51st Mingo Location
- Convenient ½ mile access to US 169/BA Expressway



The information contained herein is believed to be accurate but is not guaranteed as to accuracy and may change or be updated without notice.

Contact: Monty Berry, CCIM

Office (918) 280-9900 | Cell (918) 695-4162 | Fax (918) 280-9902

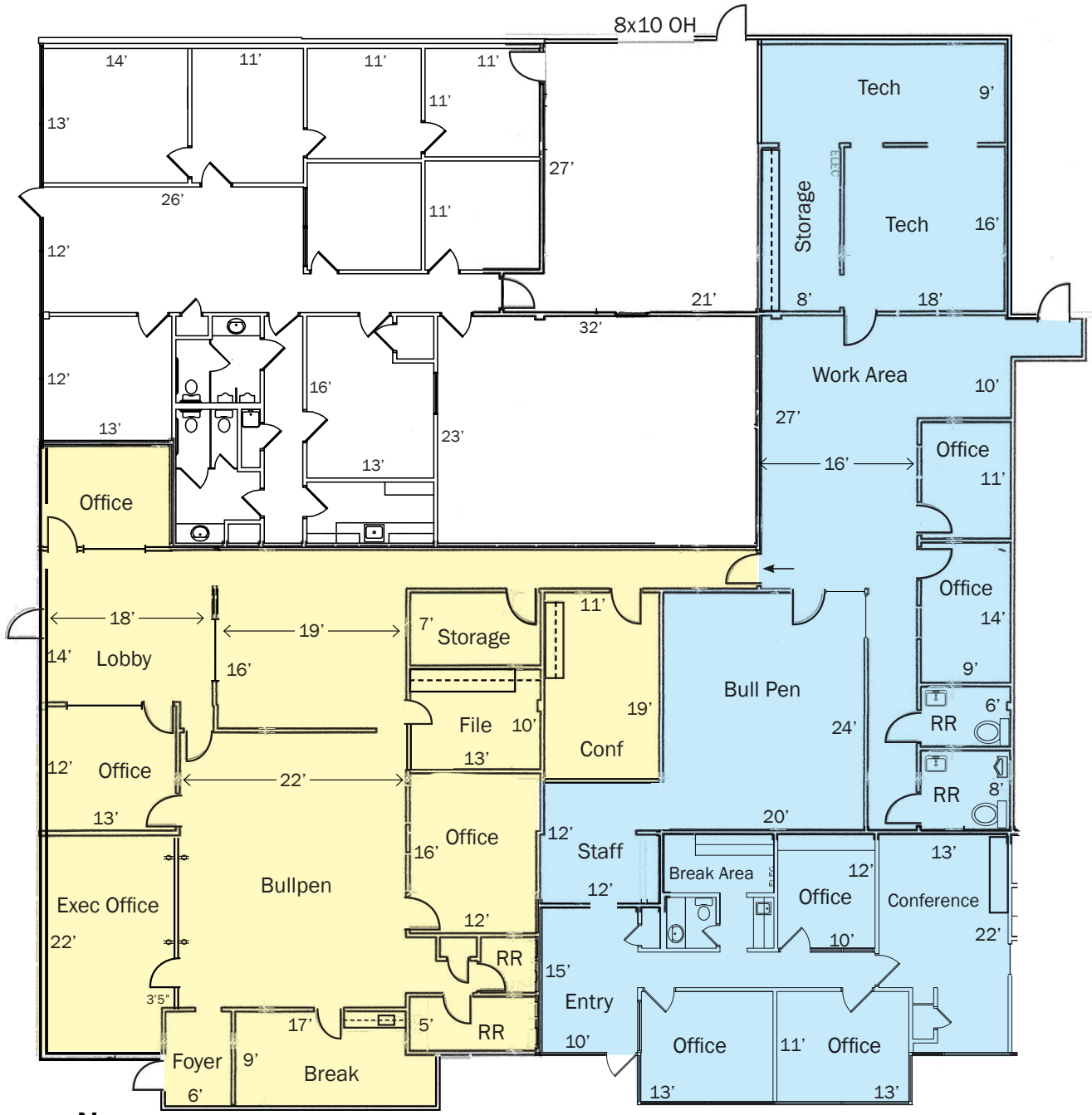
E-mail Monty@EquitasRealty.com

Aerial

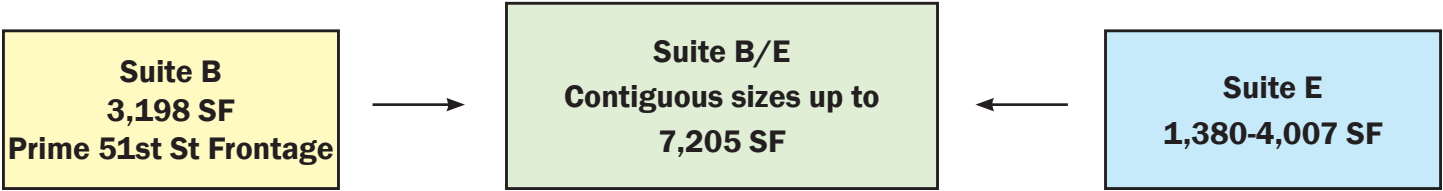


Floor Plan Suites B and E

To 51st St ← Truck/Service Access Alleyway



← N
To 51st St ← 94th East Avenue



Photos Suite B



Lobby/Entry



Conference



Bull Pen



Executive Corner Office

Photos Suite E



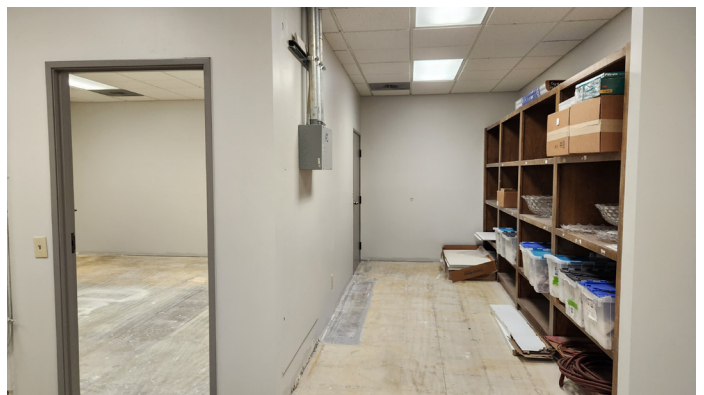
Entry



Office/Conference



Office



Tech/Storage