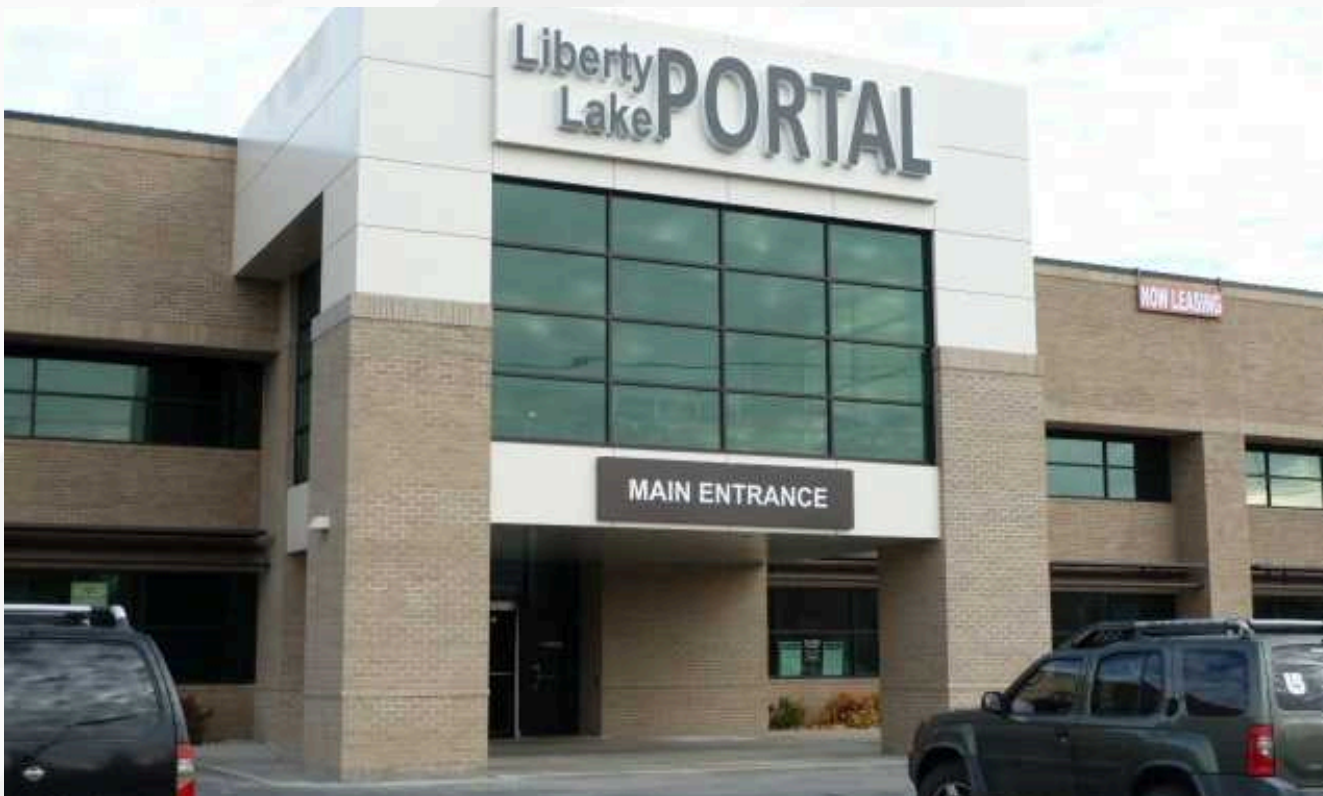


AVAILABLE SUBLEASE
23403 E MISSION AVE
LIBERTY LAKE, WA
SUITE 223



DAINES CAPITAL
COMMERCIAL REAL ESTATE



OFFERING SUMMARY

Price \$20/SFT/NNN

**Estimated
NNN** \$9-10/SFT/YR

Total SFT 1,896 SFT

Available 03/01/2025

**Parking
Ratio** 4.4/1,000

PROPERTY OVERVIEW

Class A Office on top of the nations leading data center provider, housing leading tech firms and complimented with numerous brand new tenants. Exceptional positioning at the intersection of Commerical & Residential on Mission and Molter.

 **[PROPERTY VIDEO - CLICK HERE](#)**

Steven Daines
509.590.9114
steven@dainescapital.com

Daines Capital
3029 E Boone Ave
Spokane, WA 99202
www.dainescapital.com

AVAILABLE SUBLEASE
23403 E MISSION AVE
LIBERTY LAKE, WA
SUITE 223



DAINES CAPITAL
COMMERCIAL REAL ESTATE

Space Includes:

- **4 Shared Conference Rooms**
- **DIRTT Movable Walls***
- **Reception Area**
- **Open Storage**
- **Kitchen**
- **Common Area**
- **Restrooms**
- **Desks are Negotiable**



*[Freeform](#) can move the walls

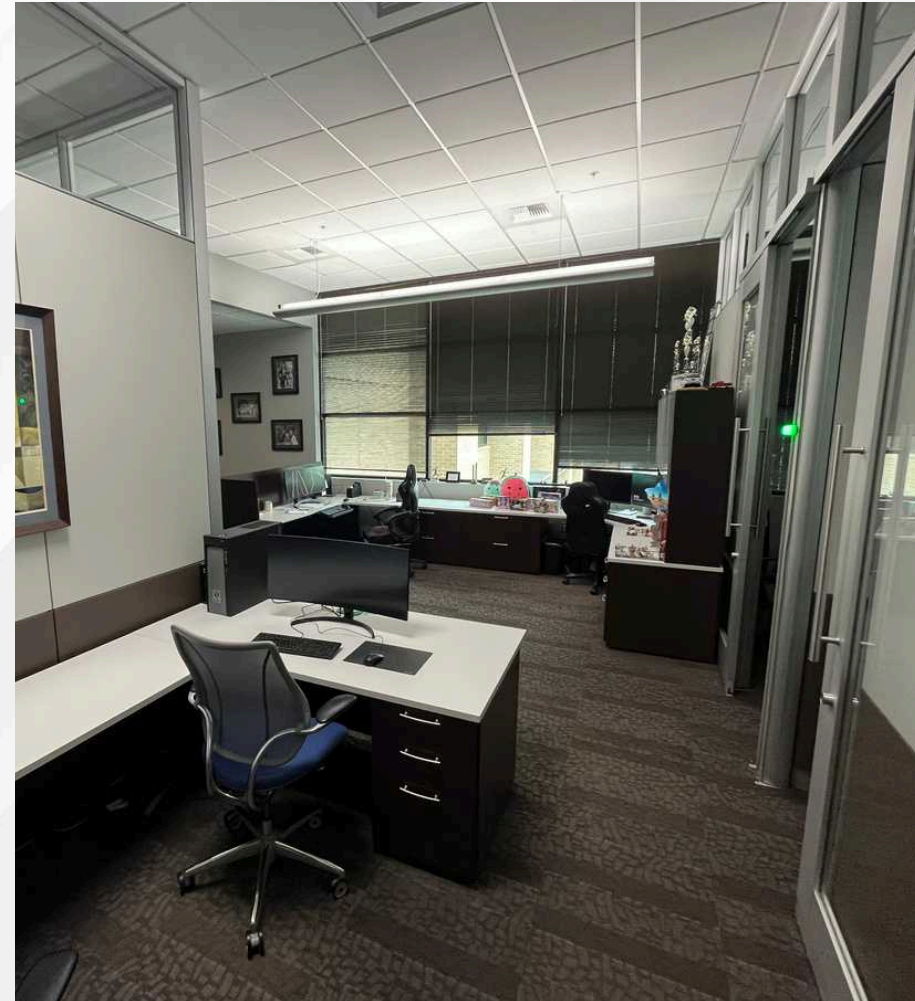
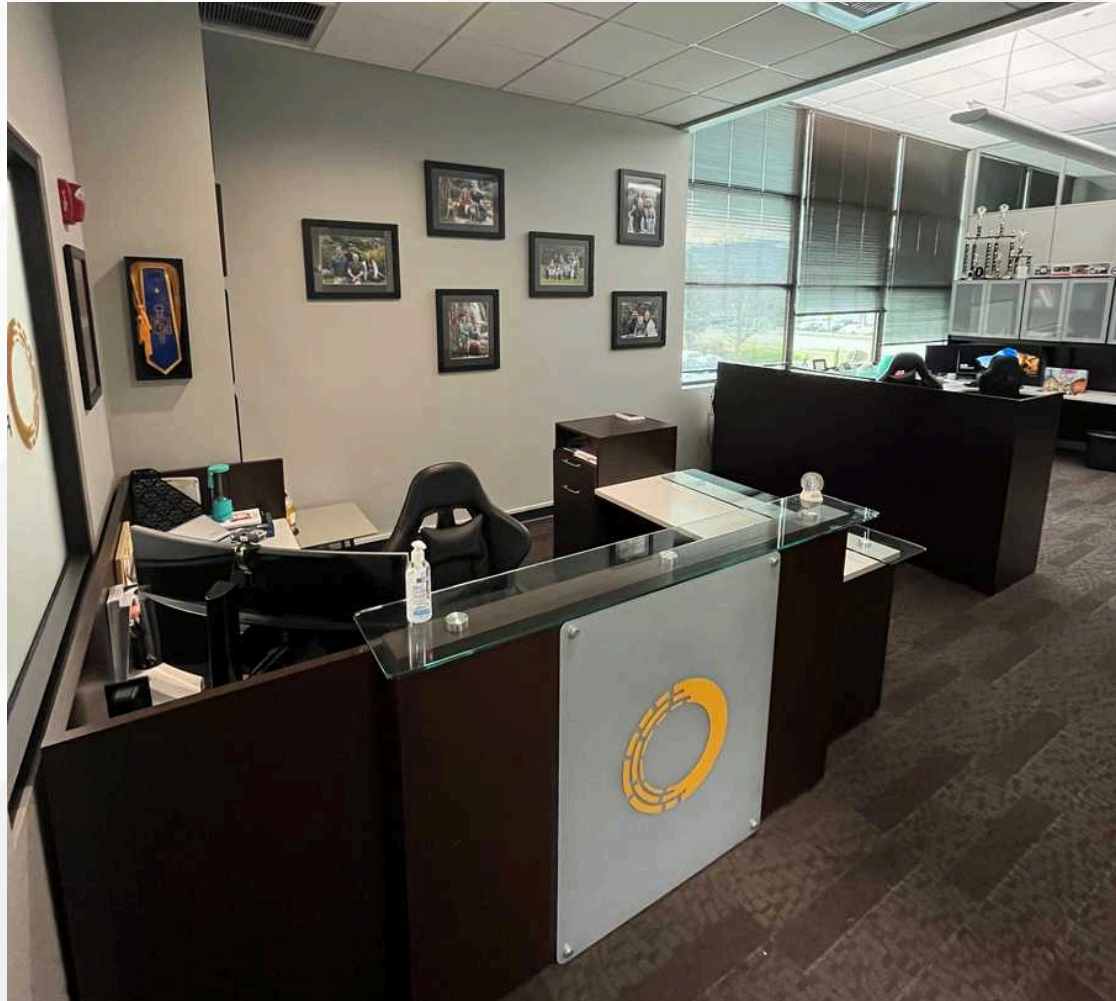
Steven Daines
509.590.9114
steven@dainescapital.com

Daines Capital
3029 E Boone Ave
Spokane, WA 99202
www.dainescapital.com

AVAILABLE SUBLEASE
23403 E MISSION AVE
LIBERTY LAKE, WA
SUITE 223



DAINES CAPITAL
COMMERCIAL REAL ESTATE



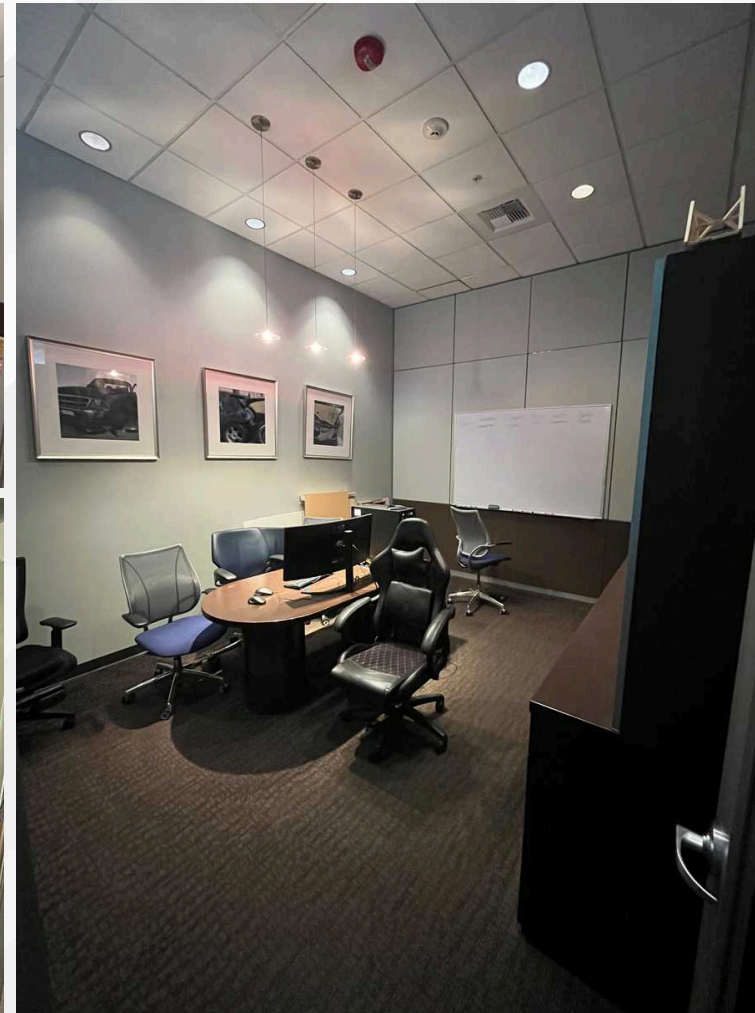
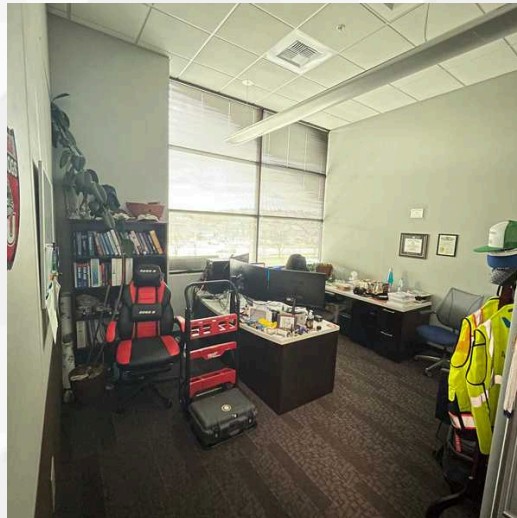
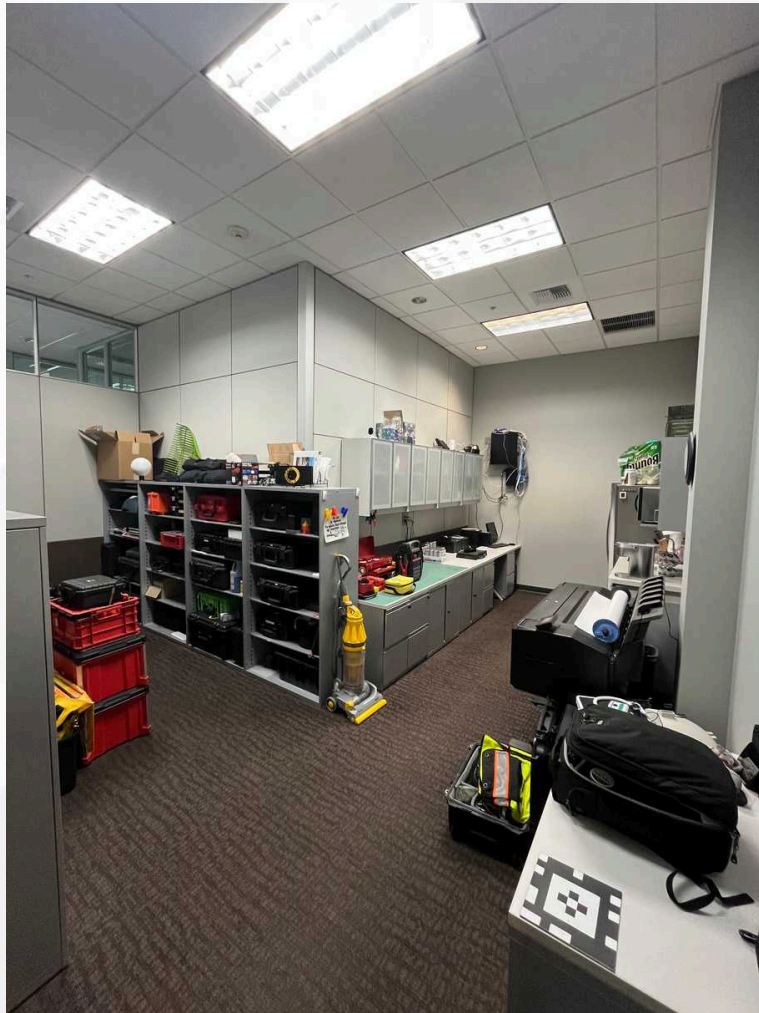
Steven Daines
509.590.9114
steven@dainescapital.com

Daines Capital
3029 E Boone Ave
Spokane, WA 99202
www.dainescapital.com

AVAILABLE SUBLEASE
23403 E MISSION AVE
LIBERTY LAKE, WA
SUITE 223



DAINES CAPITAL
COMMERCIAL REAL ESTATE



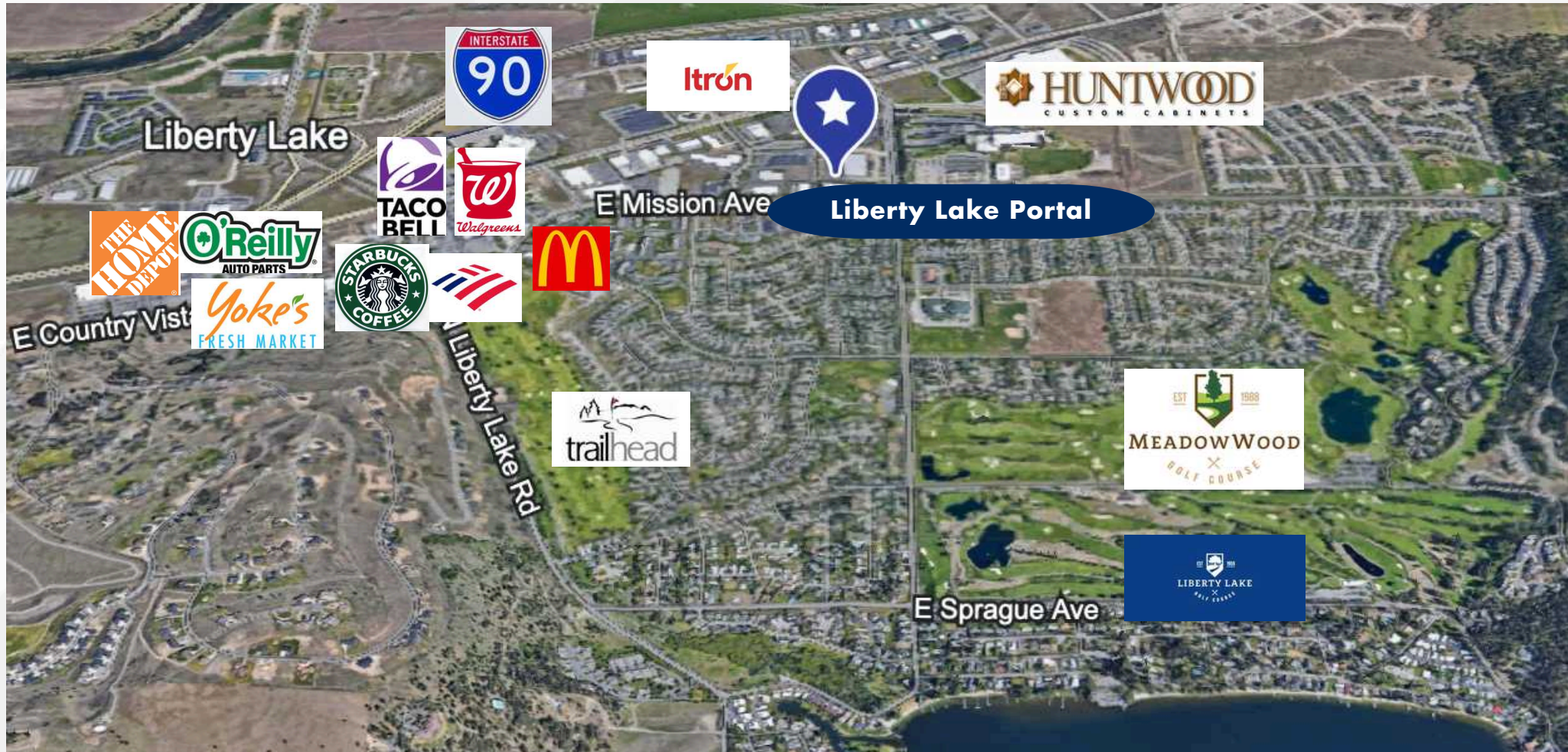
Steven Daines
509.590.9114
steven@dainescapital.com

Daines Capital
3029 E Boone Ave
Spokane, WA 99202
www.dainescapital.com

AVAILABLE SUBLEASE
23403 E MISSION AVE
LIBERTY LAKE, WA
SUITE 223



DAINES CAPITAL
COMMERCIAL REAL ESTATE



Steven Daines
509.590.9114
steven@dainescapital.com

Daines Capital
3029 E Boone Ave
Spokane, WA 99202
www.dainescapital.com

AVAILABLE SUBLEASE
23403 E MISSION AVE
LIBERTY LAKE, WA
SUITE 223



DAINES CAPITAL
 COMMERCIAL REAL ESTATE

DEMOGRAPHICS	1 MILE	3 MILE
Population	7,140	26,597
Households	2,697	10,342
Median Age	41	42
Median HH Income	\$107,694	\$92,089
Daytime Employees	4,888	7,461
Population Growth '24-'29	6.5%	6.9%
Household Growth '24-'29	6.7%	7.0%

COLLECTION STREET	CROSS STREET	TRAFFIC VOL
E. Knox Ave.	N. McKenzie Ln E	62,939
N. Liberty Lake Rd.	Country Vista Dr. S	14,493
N. Liberty Lake Rd.	E. Appleway Ave. NW	15,941



No representation, express or implied, is made as to the accuracy of information contained herein. All information is from sources deemed reliable and submitted subject to errors, omissions, change or terms and conditions without notice. Buyers are solely responsible to conduct their own due diligence to their independent satisfaction.

Steven Daines
509.590.9114
steven@dainescapital.com

Daines Capital
3029 E Boone Ave
Spokane, WA 99202
www.dainescapital.com