

# HERITAGE AUTO - BRIGHAM CITY

**FOR SALE OR LEASE**  
**18,366 SF FULL SERVICE AUTO DEALERSHIP**  
**647 SOUTH MAIN, BRIGHAM CITY, UT 84302**

**Presented By:**

**Rob Lindsey**  
Principal Broker  
[rob@highbridgecomre.com](mailto:rob@highbridgecomre.com)  
801-941-1064

**Brandon Lindsey**  
Vice President  
[brandon@highbridgecomre.com](mailto:brandon@highbridgecomre.com)  
435-237-1750



**HIGH BRIDGE**  
COMMERCIAL REAL ESTATE



An aerial photograph of a commercial property. In the foreground, there is a large, single-story building with a light-colored roof and walls. The building has several windows and a large garage door. To the left of the building, there is a large parking lot filled with many cars. In the background, there are more buildings, trees, and a road. The image is partially covered by a dark, semi-transparent overlay on the right side, which contains the text for the Table of Contents.

# Table of Contents

- 3. Property Description
- 4. Property Summary
- 5. Floor Plan
- 6. Showroom Photos
- 7. Parts and Service Shop Photos
- 8. Office and Conference Photos
- 9. High Bridge Commercial



## PROPERTY DESCRIPTION

The property offered is a full-service auto dealership situated on the busy section of Main Street. The building features a showroom, offices, a service shop and parts warehouse. The property has been owner occupied by successful dealerships since the mid 1960's and has strongly benefited from the recent rapid growth of Brigham City.





# HERITAGE AUTO

## PROPERTY SUMMARY

647 South Main, Brigham City, UT 84302

**LOCATION:** 647 S Main Brigham City, UT

**BUILDING SIZE:** 18,366 Square Feet

**LAND AREA:** 2.77 Acres

**ZONING:** General Commercial

**SHOWROOM SIZE:** +/- 3,600 Square Feet

**OFFICE SPACE:** +/- 2,400 Square Feet  
6 Private Offices, 1  
Conference Room, 1  
Reception Office

**PARTS AREA:** 1,774 Square Feet

**SERVICE AREA:** 10,570 Square Feet

**MAIN STREET FRONTAGE:** +/- 400 FT

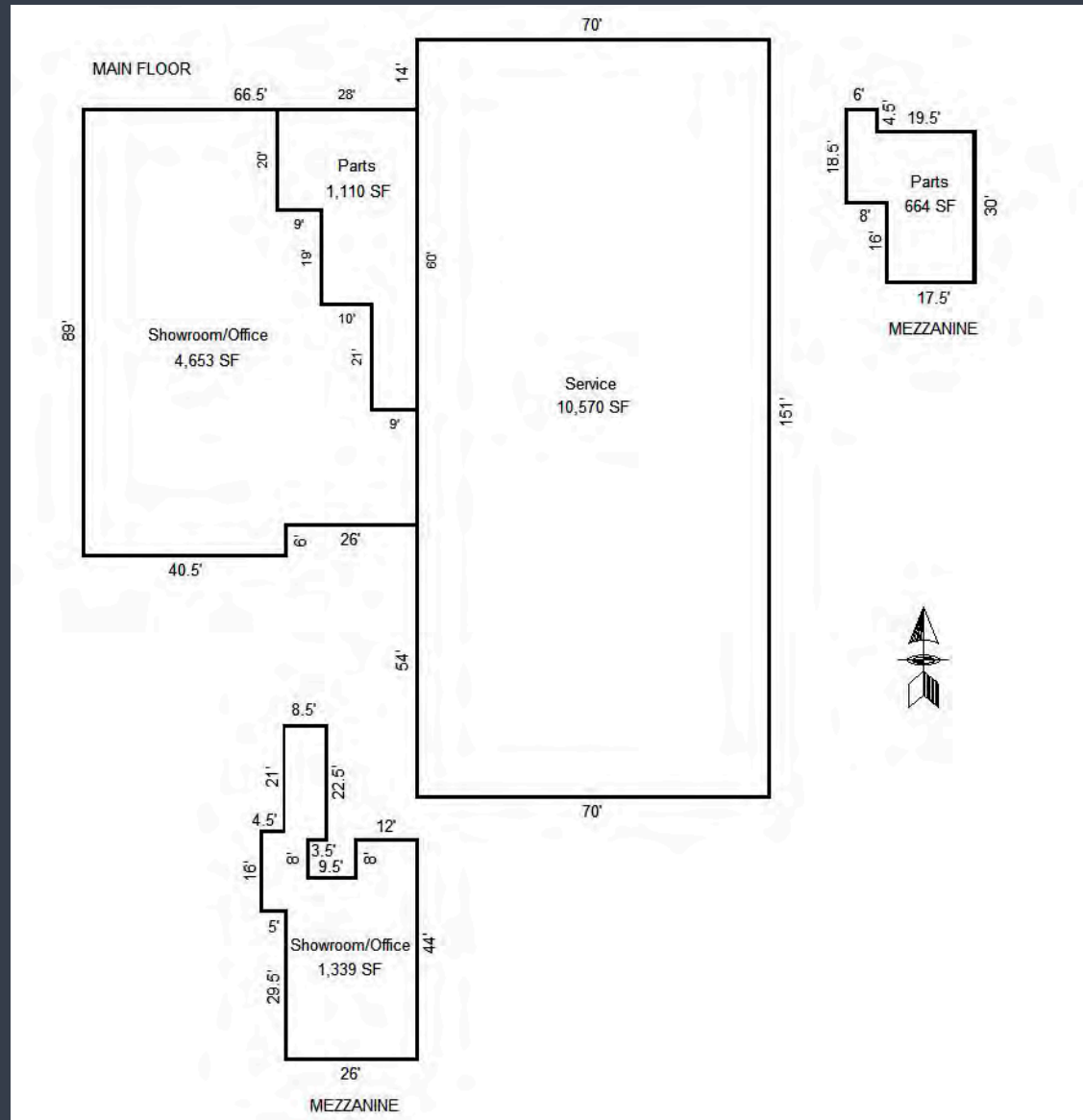
**AVERAGE DAILY TRAFFIC:** 19,000 Vehicles

**ASKING PRICE:** Please Contact

**LEASE RATE:** Please Contact



# Floor Plan



















**Rob Lindsey**  
Principal Broker  
rob@highbridgecomre.com  
801-941-1064

**Brandon Lindsey**  
Vice President  
brandon@highbridgecomre.com  
435-237-1750



**HIGH BRIDGE**  
COMMERCIAL REAL ESTATE