

MERIDIAN ORANGE CENTER

RETAIL SPACE

FOR LEASE • UP TO 2,075 SQ FT
655-691 S MAIN ST., ORANGE, CA



COMMERCIAL
WEST
BROKERAGE

COMMERCIAL WEST BROKERAGE • 949-723-7300 • WWW.COMMERCIALWEST.COM

MERIDIAN ORANGE CENTER

Retail Space Available

Retail opportunity at Meridian Orange Center, located directly on Main Street with visibility from CA-22 commuter Freeway. Join a strong lineup of national and regional tenants.

- Rare, second generation restaurant space; endcap location
- High visibility space center (40,000+ CPD on Main St)
- Immediate co-tenants include Laser Away (coming soon), Wingstop (coming soon) Starbucks, Rubios, Verizon, and more
- Strong daytime population; center is located near busy Main Place Mall and St Joseph Health and CHOC Children's Medical Center
- Immediate proximity to residential: Windsor Apartments (280 units), Eleven10 Apartments (260 units), Aura Apartments (295 units), Cameo Apartments (262 units)

LOCATION

655-691 S Main Street

SEQ Main St. & CA-22 Freeway
Orange, CA 92868

AVAILABLE

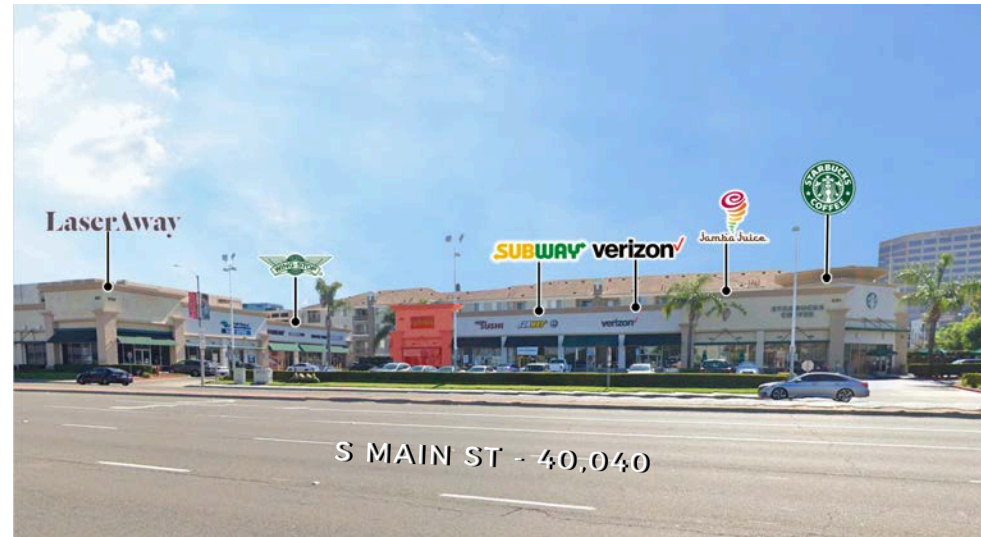
Suite 150 | 2,075 Sq. Ft. (Restaurant)

Suite 205 | 1,050 Sq. Ft.

IN GOOD COMPANY

Meridian Orange Center is located near one of the busiest medical complexes in the region - Providence St Joseph Health and CHOC Children's Medical Center. The centers have thousands of employees and patients, offering a strong daytime population near the center.

**FOR
LEASE**

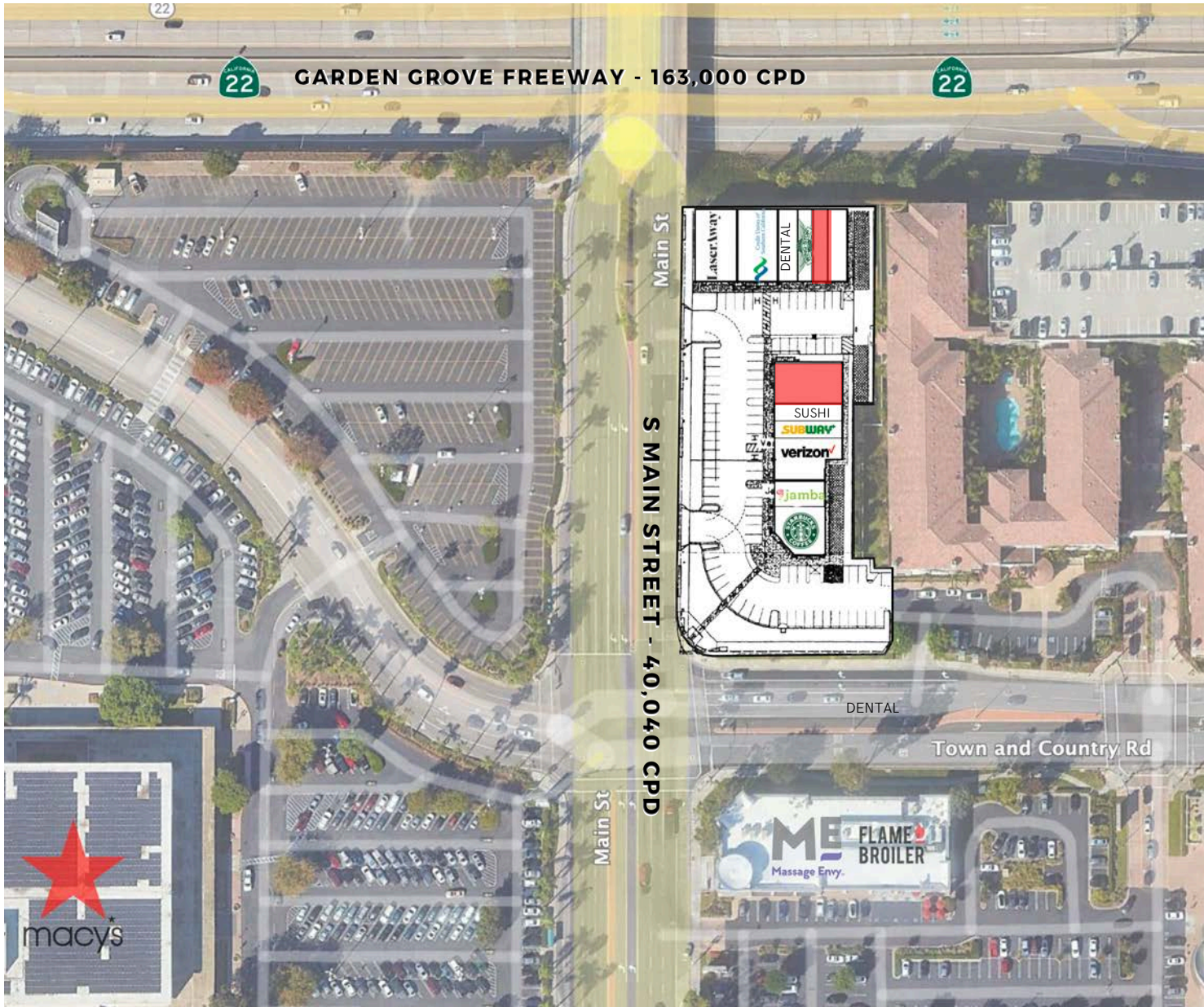


COMMERCIAL WEST BROKERAGE

Doug Wombacher | LIC# 1424025

Matt Berry | LIC# 2134414

(949) 723-7300 | mberry@commercialwest.com

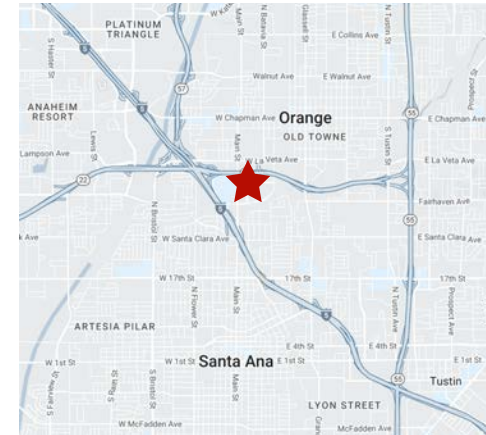


GARDEN GROVE FREEWAY - 163,000 CPD

Main St

S MAIN STREET - 40,040 CPD

Town and Country Rd



VICINITY

FOR LEASE

Suite 150 | 2,075 SQ FT

Suite 205 | 1,050 SQ FT



655-691 S MAIN STREET
ORANGE, CA



Matt Berry | LIC# 2134414
Doug Wombacher | LIC# 1424025
949.723.7300 | mberry@commercialwest.com

Location

Ideal Orange location situated directly on Main Street off CA-22 Freeway near the I-5 interchange.

MERIDIAN ORANGE CENTER
655-691 S MAIN STREET
ORANGE, CA 92868

SUITE 150 | 2,075 SQ. FT.
SUITE 205 | 1,050 SQ. FT.



COMMERCIAL WEST BROKERAGE
Doug Wombacher | LIC# 1424025
Matt Berry | LIC# 2134414
(949) 723-7300 | mberry@commercialwest.com

BY THE NUMBERS

655-691 S Main Street, Orange, CA92868

ESTIMATED POPULATION

1 mi | 28,249
2 mi | 114,506
3 mi | 279,868

AVERAGE HH INCOME

1 mi | \$111,237
2 mi | \$106,128
3 mi | \$104,312

DAYTIME POPULATION

1 mi | 39,106
2 mi | 142,280
3 mi | 305,930

COMMERCIAL WEST BROKERAGE



Doug Wombacher | LIC# 1424025
Matt Berry, LIC#2134414
949.723.7300 | mberry@commercialwest.com
www.commercialwest.com