



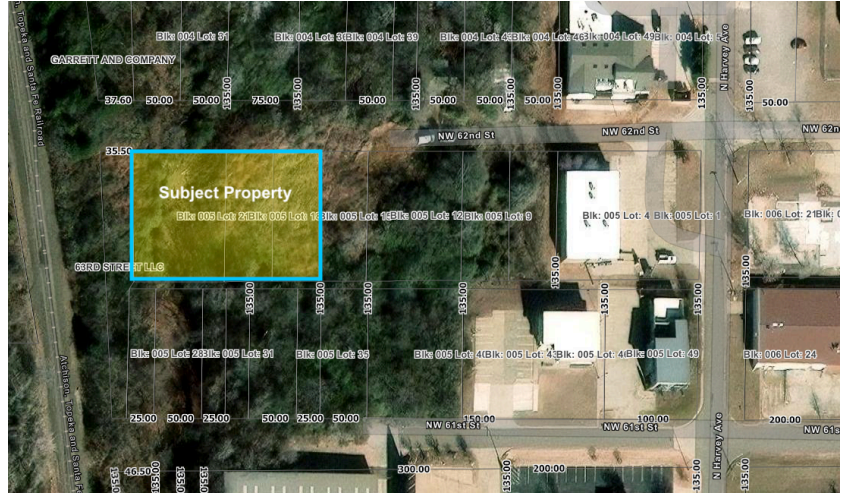
North OKC Industrial Land For Sale

Listing ID
2293

Property Type
Land/Lots

PROPERTY LOCATION

326 NW 62nd St
Oklahoma City, OK 73118
Oklahoma County



PROPERTY OVERVIEW

Acres **0.62**
Land Sq.Ft. **27,000**
Asking Price **\$480,000.00**
Price / Sq.Ft. **\$17.78**

PROPERTY DETAILS

Land Dim.	200' x 135' (mol)	Topo	Level	Electric	OG&E	Sewer	City of OKC
Zoning	SPUD-1222	RE Taxes	\$118.00 (25')	Gas	ONG	Water	City of OKC
Land Size Source	Oklahoma County Assessor						

WEB LINKS

TLR Web page www.thomaslay.com/326-nw-62nd.html
CoStar/LoopNet ID **39145583**

PROPERTY COMMENTS

Property is located west of N Harvey Ave on the south side of NW 62nd Street in Oklahoma City.
Three (3) lots total 27,000 square feet of land zoned for industrial uses. Close access to Broadway Extension.

BROKER CONTACT INFORMATION



Ron Gary
Senior Advisor

Direct: **405.721.5691**
Mobile: **405.476.0746**
Email: ron@thomaslay.com

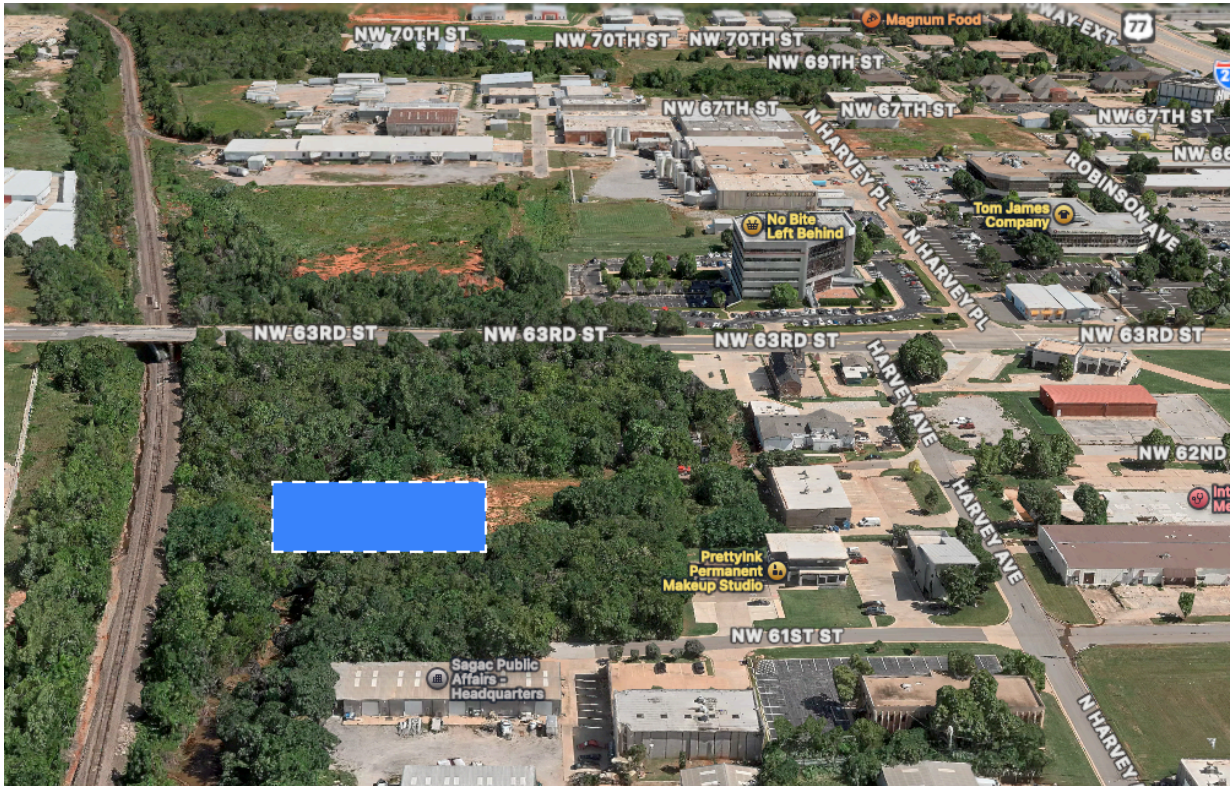
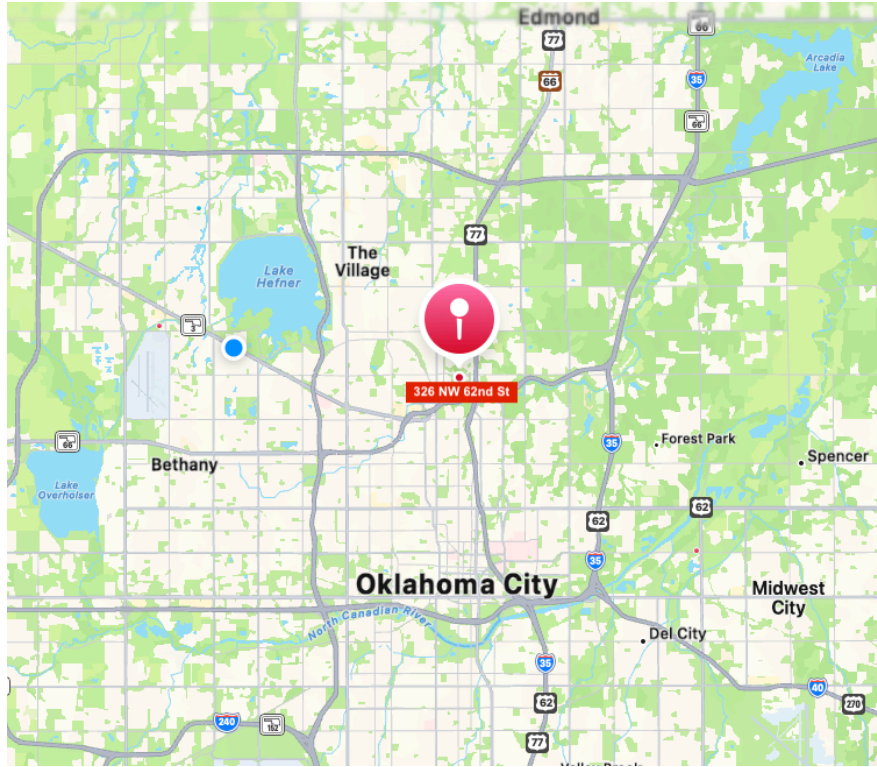


5500 NW Expressway, Suite C
Oklahoma City, OK 73132
Office 405.721.5588

ThomasLay.com

The above information, while not guaranteed, is from reliable sources. Subject to change, errors, omissions, removal from the market, and prior sale or lease. THE PROSPECTIVE BUYER/TENANT SHOULD CAREFULLY VERIFY ALL INFORMATION CONTAINED HEREIN.

326 NW 62nd St, Oklahoma City



The above information, while not guaranteed, is from reliable sources. Subject to change, errors, omissions, removal from the market, and prior sale or lease. THE PROSPECTIVE BUYER/TENANT SHOULD CAREFULLY VERIFY ALL INFORMATION CONTAINED HEREIN.