



View of Space Entrance

55 HOPE STREET

WILLIAMSBURG RETAIL/OFFICE UNDER \$40 PSF !

55 HOPE ST FROM 1,405 SF – 4,376 SF | IDEAL FOR FITNESS, MEDICAL, OFFICE / PRODUCTION, GALLERIES

55 Hope Street

Between Marcy & Havemeyer Streets

Available Space

Approximate Size:

Ground: 1,970 sf
Lower Level: 2,406 sf (selling)
Total: 4,376 sf

Storage: 1,791 sf on lower level

Ceiling Ht.:
16 ft. - Ground
11 ft. - Lower Level

Frontage: 36'-7" ft. on Hope St.

Possession: Immediate

Rent: Upon request

Possible Division Options

Tenant A

Ground: 1,405 sf
No Storage Space

Tenant B

Ground Entry: 395 sf
Lower Level: 2,406 sf (selling) plus
1,791 sf storage space

Comments

- Extraordinary presence with 16' ceilings and windows on 3-sides - at base of 117-unit luxury rental building
- Elevator lift and staircase services the lower level from ground
- Conveniently located 3-blocks from Metropolitan Ave. **L** **G** station; and close proximity to **J** **Z** **M** subways
- Ideal for fitness, medical, office, production, galleries
- Join area tenants Eddie Jr's Sports Lounge, Gertie, St. Mazie Bar & Supper Club, Rockin's Locks Salon for Kids, Recess Grove, Fette Sau, Brooklyn Art Haus, Recette, The MOUTH Kitchen & Bar, Emmy Squared Pizza, Milk Bar, The Commodore, The Four Horseman, Medrite, Court Street Grocers, Oslo Coffee Roasters, Bond Vet



Space Entrance

By the Numbers

Retail Businesses

1,104

1 Mile Radius

Households

73,052

2023 - 1 Mile Radius

Avg. Household Income

\$119,533

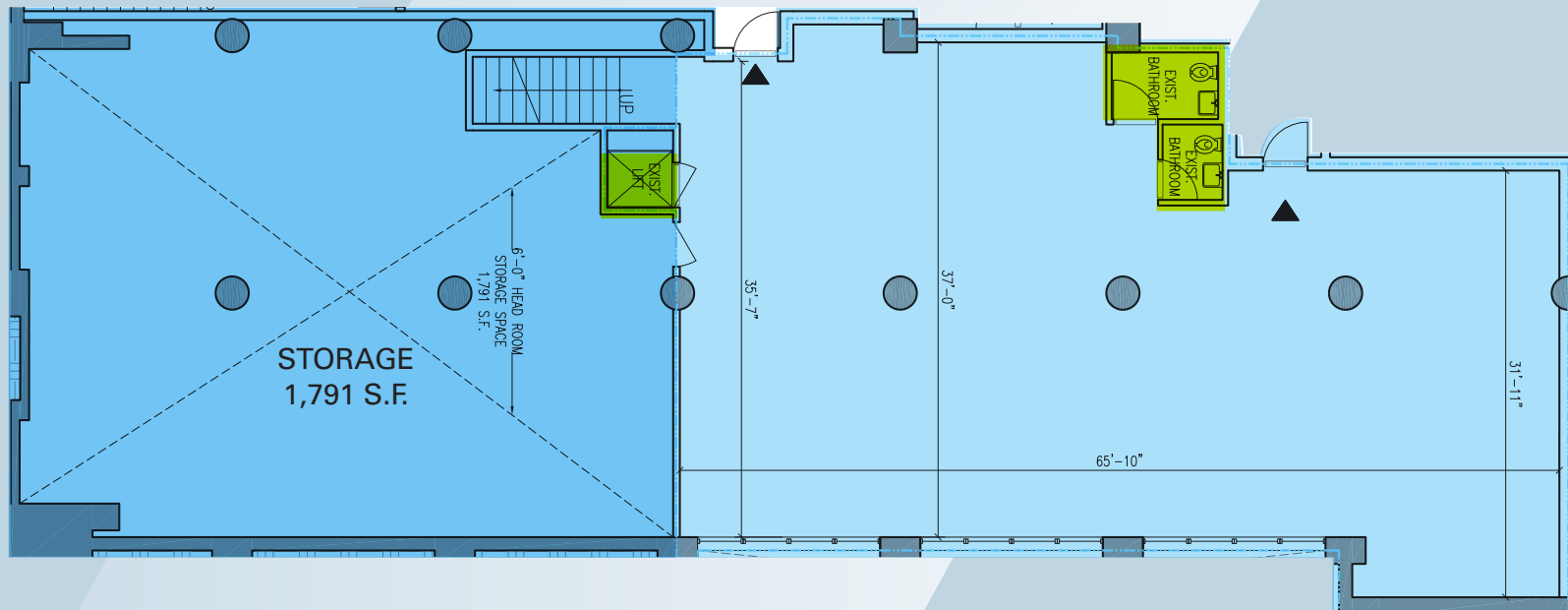
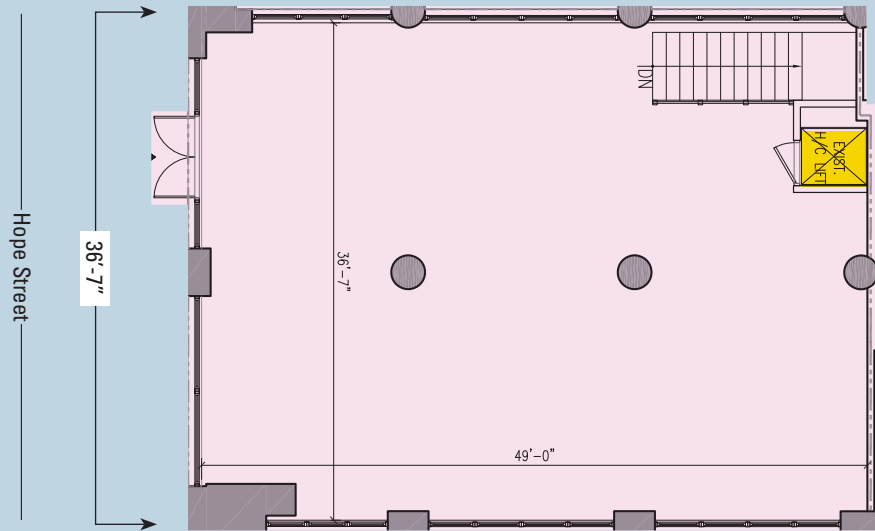
2023 - 1 Mile Radius

Subway Ridership

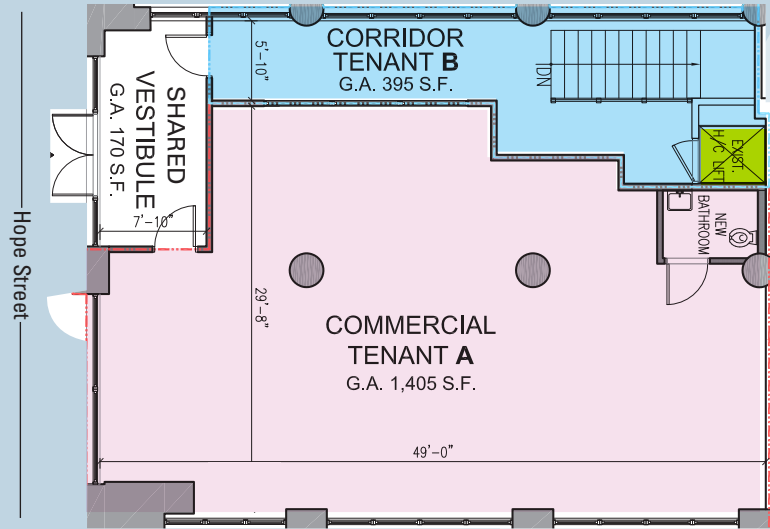
3,903,034

2023 - L/G station

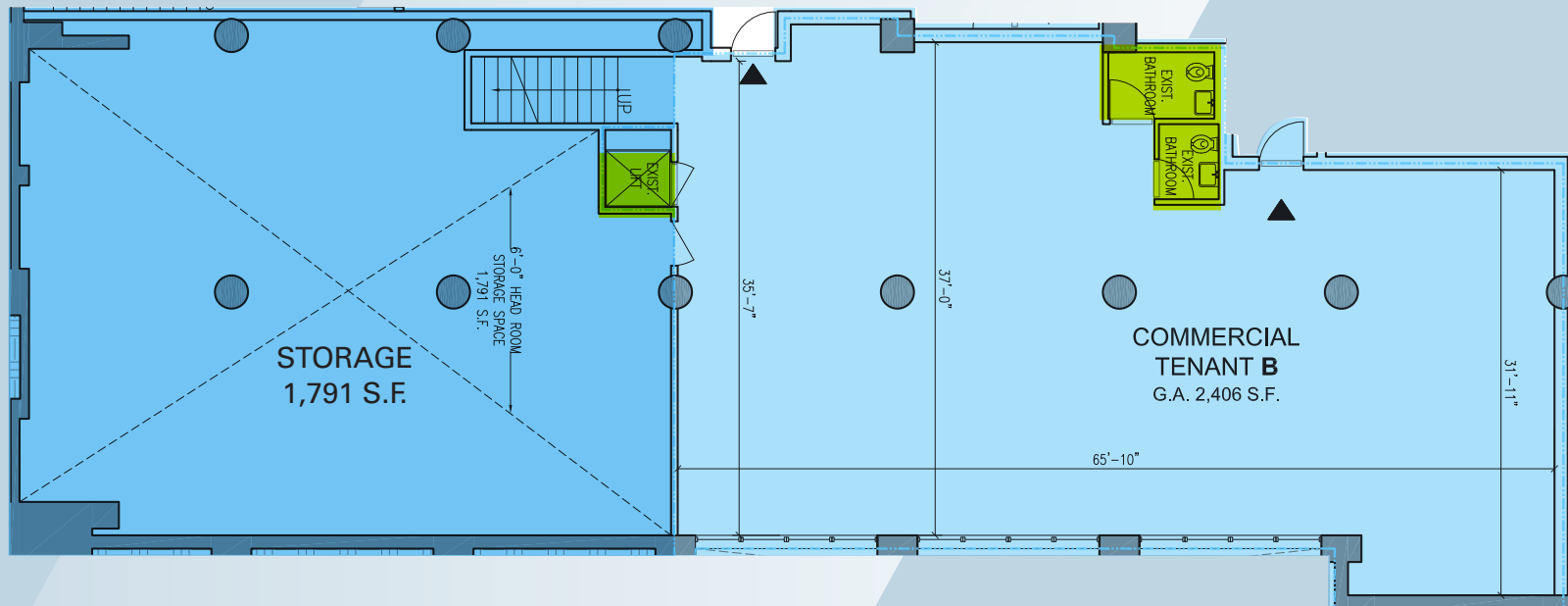
Floor Plan



Possible Division Options

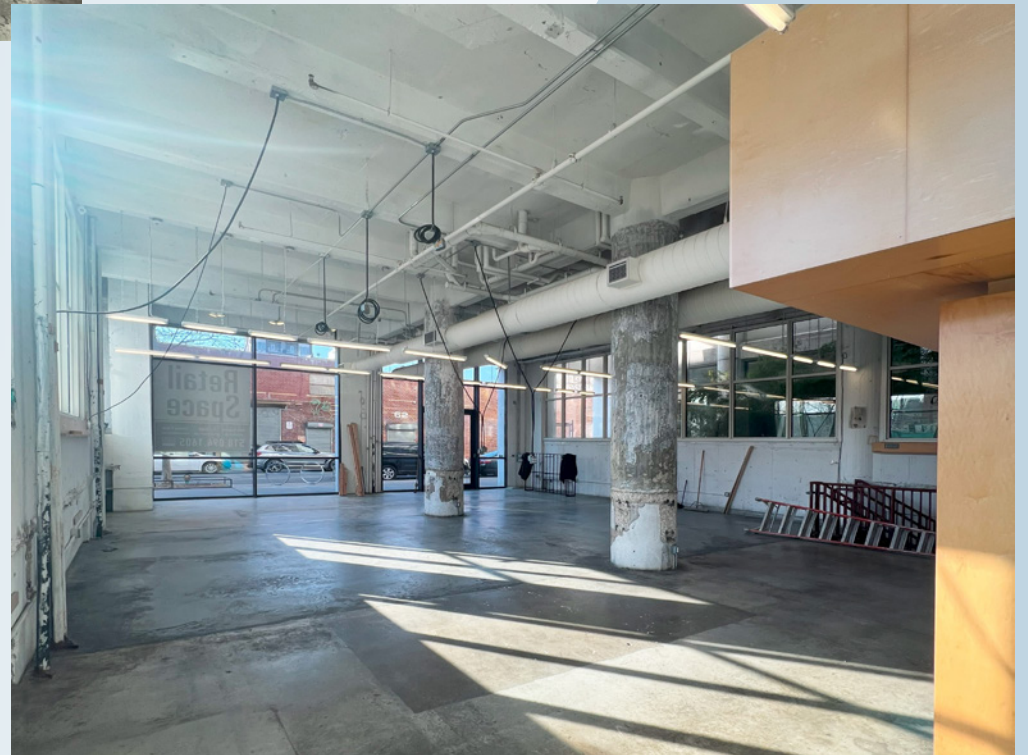


	Tenant A	
	Ground:	1,405 sf
	Tenant B	
	Ground Entry:	395 sf
	Lower Level:	2,406 sf
		<u>1,791 sf storage space</u>
	Total:	2,801 sf



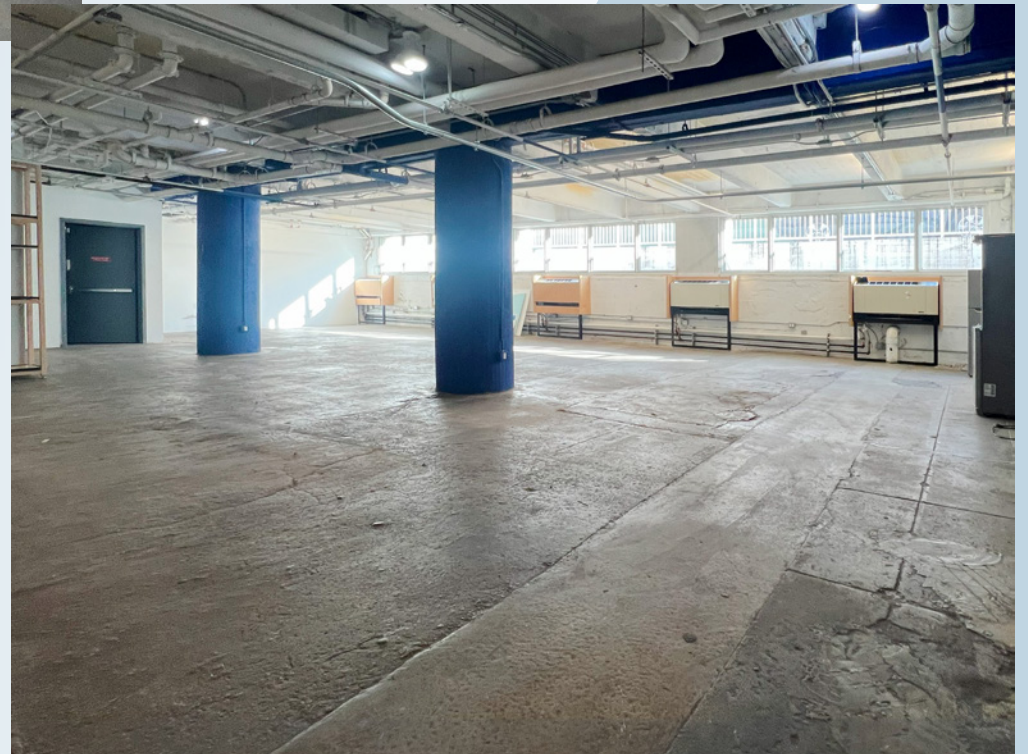


Ground Level:
Features oversized windows facing south, east, and west providing good natural light





Lower Level:
Features windows facing east provide good natural light
and (2) private restrooms



FOOD & DRINK

1. Brooklyn Art Haus
2. The MOUTH Kitchen + Bar
3. Medrite
4. Golden Dragon Kitchen
5. Milk Bar
6. Court Street Grocers
7. The Commodore
8. Chelsea Garden Center
9. Fette Sau
10. Recette
11. Eddie Jr's Sports Lounge
12. Recess Grove
13. Gertie
14. St. Mazie Bar & Supper Club
15. Rockin' Locks Salon for Kids
16. Emmy Squared Pizza
17. IWAK Sushi + Kitchen
18. Savoi Latin Bistro
19. Full circle Bar
20. Peter Luger Steak House
21. Hollanders Cakes
22. The Yard
23. Weylin
24. Moxy Brooklyn
25. Pies 'n' Thighs
26. Ceremonia Bakeshop
27. Aska
28. Taqueria Casa Imelda
29. Keg & Lantern Southside
30. Butler
31. Industria Williamsburg
32. The Woods
33. JANE Motorcycles
34. Misi
35. Shoto Omakase
36. Layla
37. Form50 Fitness
38. Noods n' Chill
39. Pokito
40. Sun and Air
41. With Others
42. Sauced
43. Sushi On Me
44. La Superior
45. Breckenridge Café
46. Blend Williamsburg
47. 12 Chairs Café
48. Vanessa's Dumpling House
49. Fini Pizza
50. BonBon
51. Tabaré
52. Zab Zaab
53. Maison Premiere
54. Horses & Divorces
55. Williamsburg Cinemas
56. Supreme
57. Caffé Valencia
58. PLANTA
59. Aurora Brooklyn



1,582 Residential Units, New School
 500,000 SF Commercial Space
 6-Acre Waterfront Explanade



Hotel Indigo - 188-keys
 500 Metropolitan Avenue

- | | | | | |
|---------------------------|-----------------------------|--------------------------------|------------------------------|---------------------------------|
| 60. LEIF | 72. Nitehawk Cinema | 84. Woodhull Wine Bar | 96. Citizens | 108. Streb |
| 61. Haricot Vert | 73. Martha's Country Bakery | 85. Foodtown | 97. Black Seed Bagels | 109. Radegast Hall & Biergarten |
| 62. Gelateria Gentile | 74. La Bicyclette Bakery | 86. Bond Vet | 98. The Levee | 110. Blue Bottle Coffee |
| 63. Pilgrim Surf + Supply | 75. de Mole | 87. Just Salad | 99. Elite Williamsburg | 111. Jackbar |
| 64. Ume | 76. Tabú | 88. CAVA | 100. Velma Vintage | 112. L'Industrie Pizzeria |
| 65. Roberta's | 77. The Four Horsemen | 89. Levain Bakery | 101. Daily Feed | 113. Serendipity bk |
| 66. Other Half Brewing | 78. Bar Madonna | 90. Apple | 102. Williamsburg Veterinary | 114. Traif |
| 67. Sunday in Brooklyn | 79. St. Anselm | 91. Sweetgreen | 103. Jack's Wife Frieda | 115. J.Crew |
| 68. FREEHOLD | 80. Golden Years | 92. Birrieria Alexa's Red Taco | 104. KCDC Skateshop | 116. BAGGU |
| 69. Mekeburg's | 81. We Got Company | 93. Equinox | 105. RAINS | 117. Trader Joe's |
| 70. Devoción | 82. Oslo Coffee Roasters | 94. Whole Foods Market | 106. Book Thug Nation | |
| 71. Skinny Dennis | 83. The Butcher's Daughter | 95. Duane Reade | 107. Casper | |



For further information and/or inspection contact:

Mark Tergesen

Licensed Assoc. Real Estate Broker
212.400.9528
mt@absre.com

Ben Waller

Licensed Assoc. Real Estate Broker
212.400.9515
bwaller@absre.com

ABS Partners Real Estate • 200 Park Avenue South, 10th Floor, New York, NY 10003 • 212.400.6060 • www.absre.com