

**Specifications**

**±5,000 SF (Building 5)**  
TOTAL BUILDING SIZES

**±5,000 SF**  
AVAILABLE SPACE

**1 Drive-In**  
LOADING

**Varies**  
COLUMN SPACING

**200 – 400 Amps**  
POWER

**16' – 17'**  
CEILING HEIGHTS

**±4.66 AC (Block 524, Lot 1)**  
LOT SIZE

**\$2.14 PSF**  
TAX

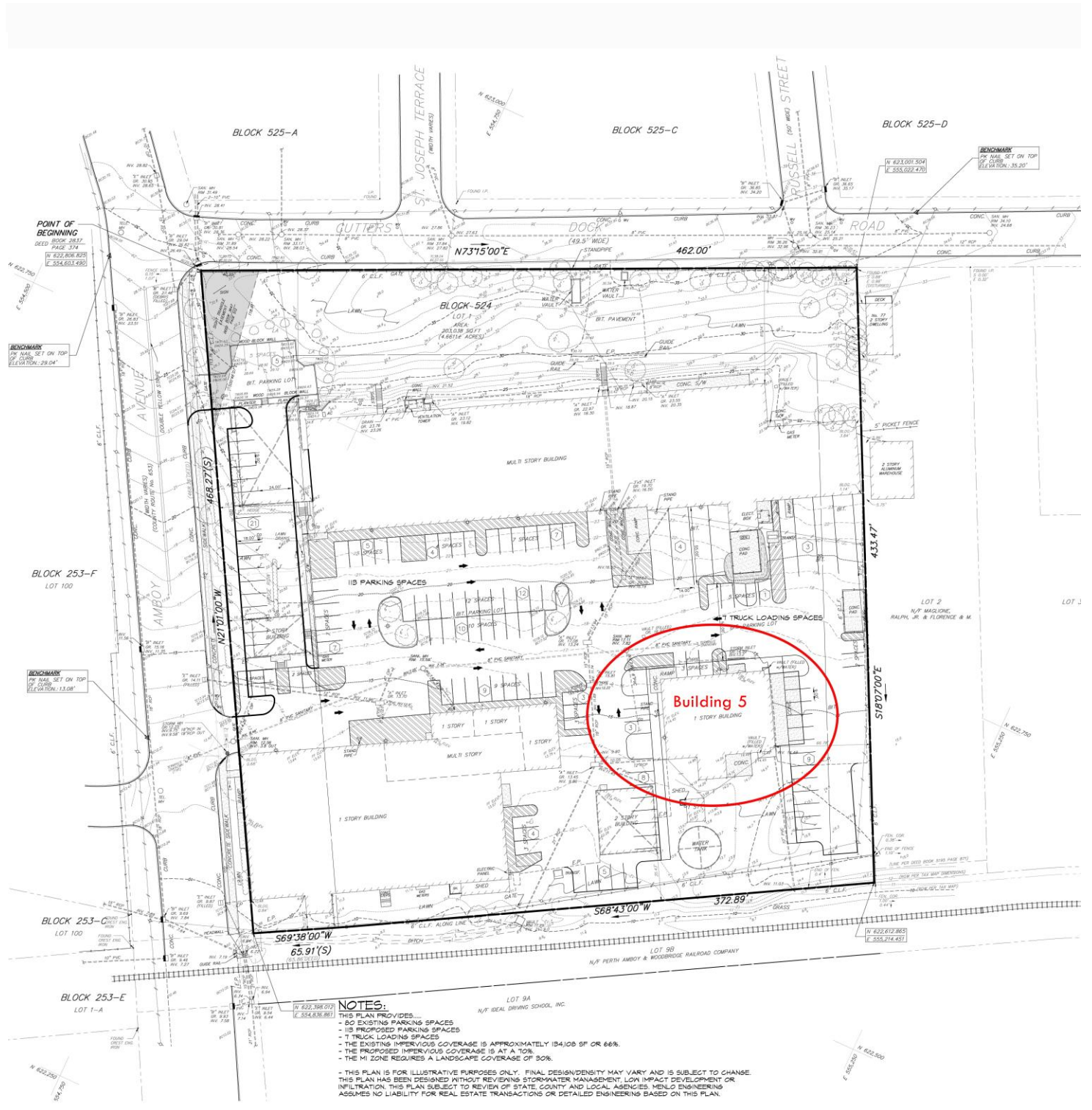
**\$2.48 PSF**  
CAM

**\$4.62 PSF**  
TOTAL

For additional property information or to arrange an inspection, please contact the exclusive brokers:

- Jason M. Crimmins, CCIM, SIOR, *Chief Executive Officer*, 973.379.6644 x 122, [jmcrimmins@blauberg.com](mailto:jmcrimmins@blauberg.com)
- Alessandro (Alex) Conte, CCIM, SIOR, *President*, 973.379.6644 x 131, [aconte@blauberg.com](mailto:aconte@blauberg.com)
- Peter J. Murano, Jr., *Managing Executive Director*, 973.379.6644 x 114, [pjmurano@blauberg.com](mailto:pjmurano@blauberg.com)
- Alex Dombrowski, *Associate*, 973.379.6644 x 229, [adombrowski@blauberg.com](mailto:adombrowski@blauberg.com)





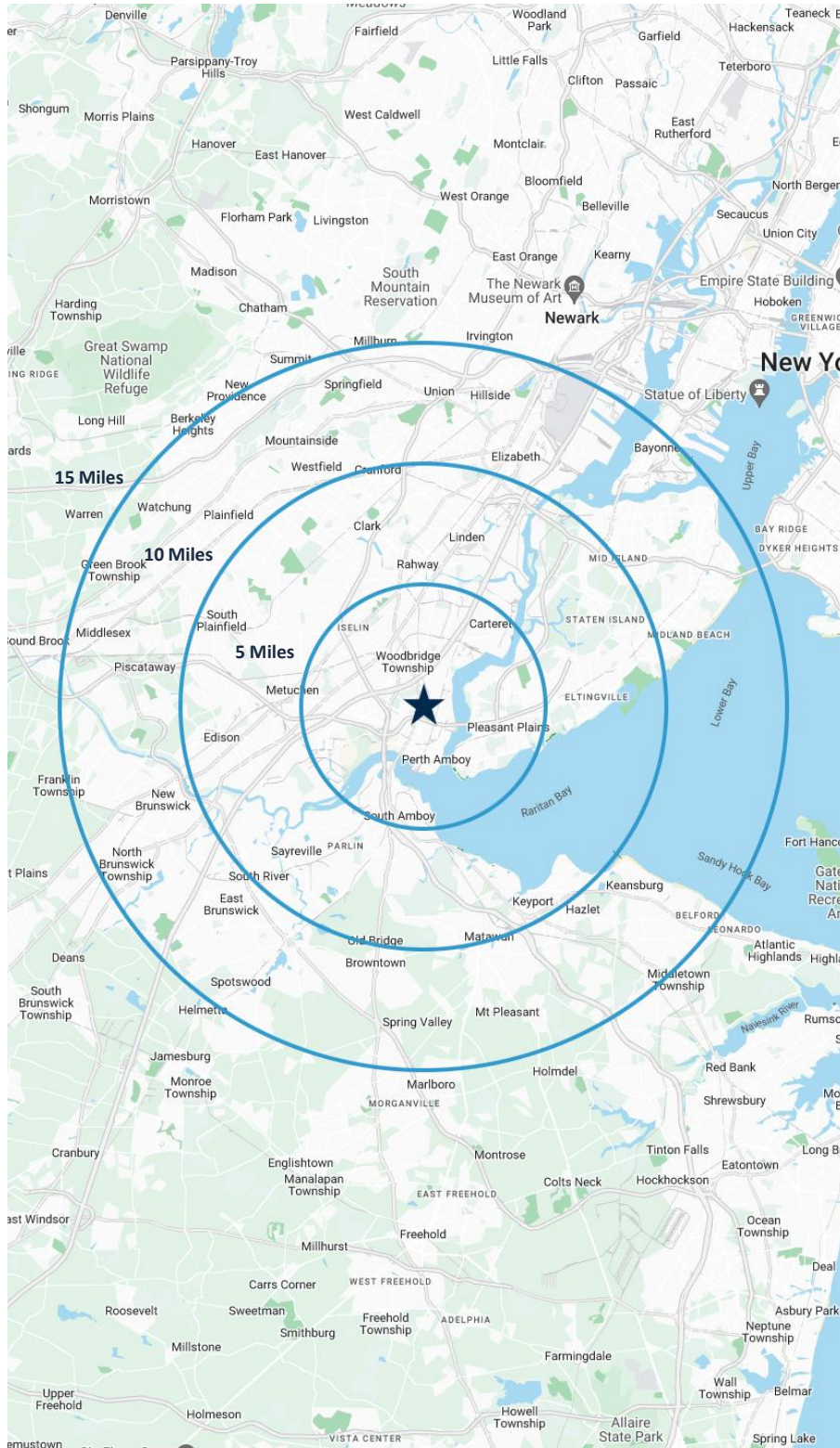
For additional property information or to arrange an inspection, please contact the exclusive brokers:

- Jason M. Crimmins, CCIM, SIOR, *Chief Executive Officer*, 973.379.6644 x 122, [jmcrimmins@blauberg.com](mailto:jmcrimmins@blauberg.com)
- Alessandro (Alex) Conte, CCIM, SIOR, *President*, 973.379.6644 x 131, [aconte@blauberg.com](mailto:aconte@blauberg.com)
- Peter J. Murano, Jr., *Managing Executive Director*, 973.379.6644 x 114, [pjmurano@blauberg.com](mailto:pjmurano@blauberg.com)
- Alex Dombrowski, *Associate*, 973.379.6644 x 229, [adombrowski@blauberg.com](mailto:adombrowski@blauberg.com)



The information contained herein has been obtained from sources considered to be reliable, but no guarantee of its accuracy is made by this company. In addition, no representation is made respecting zoning, condition of title, dimensions, or any matters of a legal or environmental nature. Such matters should be referred to legal counsel for determination. Terms and conditions are subject to change without prior notice. Subject to errors and omissions.





**5 MILES**

- Total Population: 348,095
- Households: 123,272
- Median Household Income: \$112,839
- Average Household Size: 2.8
- Transportation to Work: 167,236
- Labor Force: 282,274

**10 MILES**

- Total Population: 1.4M
- Households: 491,729
- Median Household Income: \$112,951
- Average Household Size: 2.8
- Transportation to Work: 692,612
- Labor Force: 1.13M

**15 MILES**

- Total Population: 2.83M
- Households: 1.01M
- Median Household Income: \$111,758
- Average Household Size: 2.7
- Transportation to Work: 1.41M
- Labor Force: 2.28M

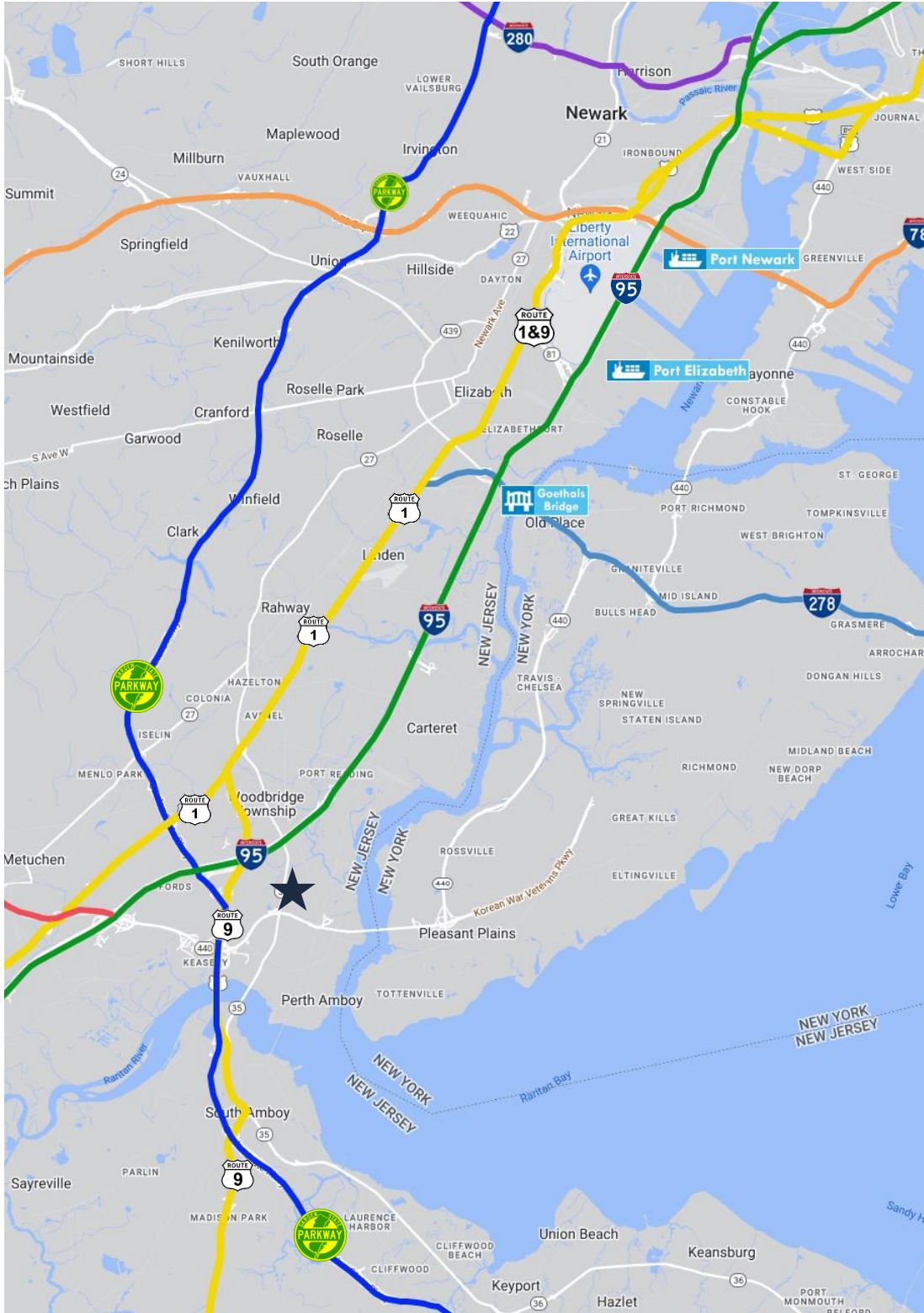
For additional property information or to arrange an inspection, please contact the exclusive brokers:

- Jason M. Crimmins, CCIM, SIOR, *Chief Executive Officer*, 973.379.6644 x 122, [jmcrimmins@blauberg.com](mailto:jmcrimmins@blauberg.com)
- Alessandro (Alex) Conte, CCIM, SIOR, *President*, 973.379.6644 x 131, [aconte@blauberg.com](mailto:aconte@blauberg.com)
- Peter J. Murano, Jr., *Managing Executive Director*, 973.379.6644 x 114, [pjmurano@blauberg.com](mailto:pjmurano@blauberg.com)
- Alex Dombrowski, *Associate*, 973.379.6644 x 229, [adombrowski@blauberg.com](mailto:adombrowski@blauberg.com)






The information contained herein has been obtained from sources considered to be reliable, but no guarantee of its accuracy is made by this company. In addition, no representation is made respecting zoning, condition of title, dimensions, or any matters of a legal or environmental nature. Such matters should be referred to legal counsel for determination. Terms and conditions are subject to change without prior notice. Subject to errors and omissions.





**ACCESSIBILITY**

- 
2.1 MI  
Route 9
- 
2.8 MI  
I-95 Exit 11
- 
2.9 MI  
GSP Exit 127
- 
7.9 MI  
I-278
- 
12.4 MI  
Goethals Bridge
- 
14.6 MI  
Ports Newark and Elizabeth
- 
17.7 MI  
Newark Airport

For additional property information or to arrange an inspection, please contact the exclusive brokers:  
 Jason M. Crimmins, CCIM, SIOR, *Chief Executive Officer*, 973.379.6644 x 122, [jmcrimmins@blauberg.com](mailto:jmcrimmins@blauberg.com)  
 Alessandro (Alex) Conte, CCIM, SIOR, *President*, 973.379.6644 x 131, [aconte@blauberg.com](mailto:aconte@blauberg.com)  
 Peter J. Murano, Jr., *Managing Executive Director*, 973.379.6644 x 114, [pjmurano@blauberg.com](mailto:pjmurano@blauberg.com)  
 Alex Dombrowski, *Associate*, 973.379.6644 x 229, [adombrowski@blauberg.com](mailto:adombrowski@blauberg.com)



The information contained herein has been obtained from sources considered to be reliable, but no guarantee of its accuracy is made by this company. In addition, no representation is made respecting zoning, condition of title, dimensions, or any matters of a legal or environmental nature. Such matters should be referred to legal counsel for determination. Terms and conditions are subject to change without prior notice. Subject to errors and omissions.

