

PROFESSIONAL OFFICE SPACE
**1680-1690 WEST SHAW
AVENUE, FRESNO, CA**
AVAILABLE FOR LEASE



1684

**POINT WEST
TERRACE**

1680-1690 W SHAW AVE



AMIR DEHLAN
DRE#01851777
559-490-2500 x190
amir@dehlan.com

BRANDON LAMONICA
DRE#01317858
559-930-1221
blamonica@fortuneassociates.com

JAMES BITTER
DRE#02044628
559-490-2500 x122
jbitter@fortuneassociates.com

JOEL MARTINEZ
DRE#02168127
559-490-2500 x124
jmartinez@fortuneassociates.com

HIGHLIGHTS

Location Description

Two-story building located in Point West Terrace on West Shaw. This property is conveniently close to Fig Garden Shopping Center, banking facilities, and dining options, making it an ideal location for businesses seeking accessibility and local amenities. The location is conveniently located near Highway 41 and 99. Parking availability offers 3.68 spaces per 1,000± rentable square feet. Covered reserved parking at a ratio of 2.55 spaces per 1,000± rentable square feet is available at no extra charge.

Property Information

TYPE	Office
MARKET SECTOR	West Shaw
AVAILABLE AREA	19,431 RSF
MOVE-IN DATE	Immediately
ZONING	CMX
LEASE RATE	\$1.90 plus janitorial



HIGHLIGHTS

Available Space

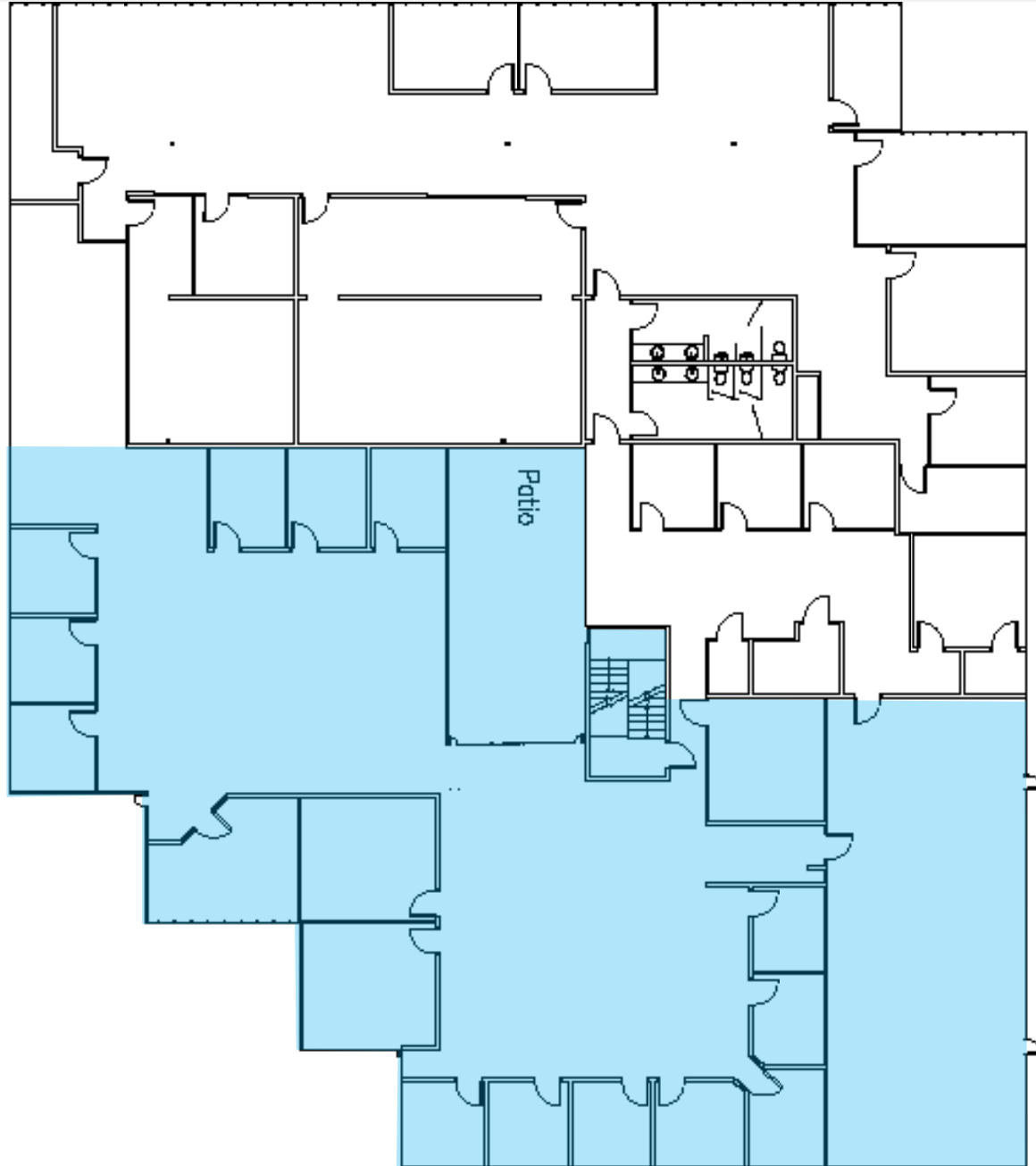
Address	Suite	RSF
1684 W. Shaw	Suite 103	6,812 RSF
1690 W. Shaw	Suite 106	1,699 RSF
1690 W. Shaw	Suite 107	5,320 RSF
1690 W. Shaw	Suite 108	1,666 RSF

*Suites 106-108 can combine to accommodate ±8,685 RSF



FLOOR PLANS

1684 W. Shaw
Ste 103 ±6,812 SF

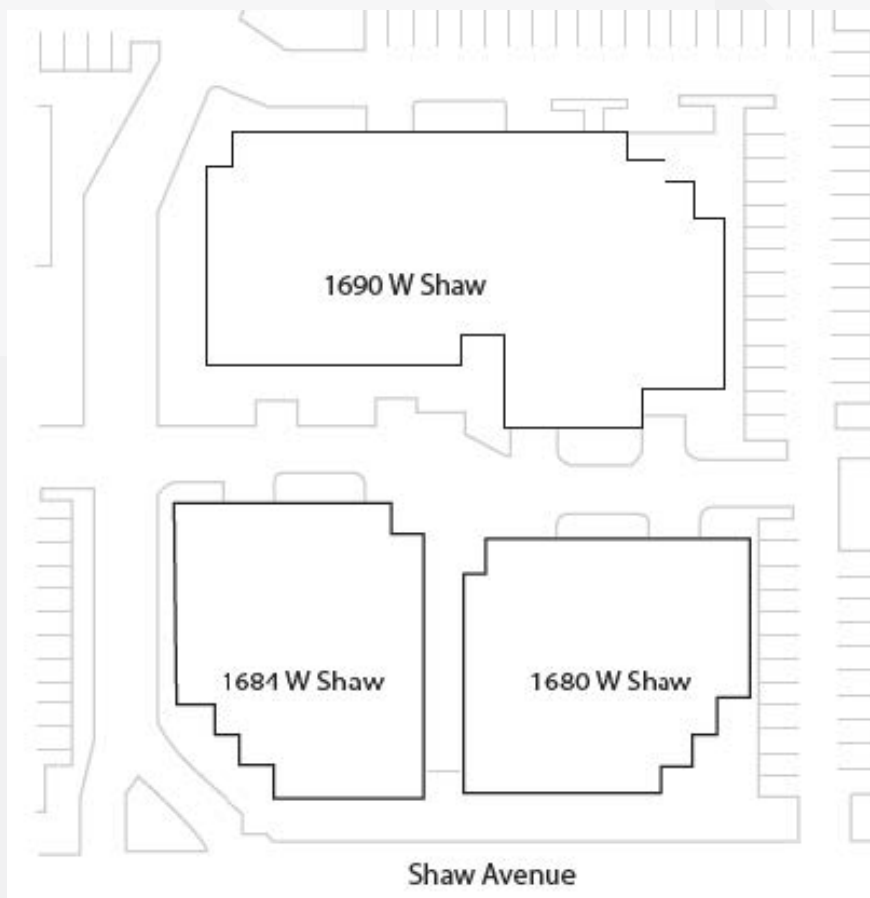


Speculative Floor Plan

FLOOR PLANS

1690 W. Shaw
Ste 106 ±1,699 SF
Ste 107 ±5,320 SF
Ste 108 ±1,666 SF

Ste 107 spec floorplan



PHOTOS



CONTACT US



AMIR DEHLAN

amir@dehlan.com
559-490-2500 x190
DRE#01851777

BRANDON LAMONICA

blamonica@FortuneAssociates.com
(559) 930-1221
DRE#01317857

JAMES BITTER

jbitter@FortuneAssociates.com
(559) 490-2500 Ext. 122
DRE#02044628

JOEL MARTINEZ

jmartinez@FortuneAssociates.com
559-490-2500 Ext. 124
DRE#02168127



559-490-2500
470 E. Herndon Avenue, Suite 200
Fresno, CA 93720

All information, representations and projections indicated in this brochure are based on information supplied by the owner or sources deemed reliable and are not warranted by FORTUNE ASSOCIATES. DRE02210729