

2625 West Way
Singer Island, FL 33404

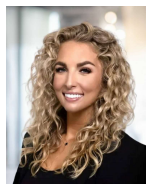
Sale Price
\$1,422,500

Introducing an exceptional opportunity for multifamily investment in South Florida. This distinguished property presents a meticulously maintained 2,234 SF building featuring four timeless and versatile units. Built in 1954, the property emanates classic charm while offering modern appeal for tenants. Boasting a prime location in the vibrant South Florida area, this investment is primed for steady demand and long-term value. With its attractive features and strong investment potential, this property



Chip Armstrong
Director of Commercial Sales

561.371.3787
chiparmstrong@keyes.com



Liz Nunes
Director of Luxury Sales

561.351.4529
lnunes@ipre.com

The Keyes Company Mr. Chip Armstrong, 11290 Legacy Avenue, Suite 210, Palm Beach Gardens, FL 33410 keyescommercial.com

This information has been secured from sources we believe to be reliable, but we make no representations nor warranties, express nor implied as to the accuracy of the information. References to square footage are approximate. Buyer must verify the information and bears all risks for any inaccuracies.



Property Description

Introducing an exceptional opportunity for multifamily investment in South Florida. This distinguished property presents a meticulously maintained 2,234 SF building featuring four timeless and versatile units. Built in 1954, the property emanates classic charm while offering modern appeal for tenants. Boasting a prime location in the vibrant South Florida area, this investment is primed for steady demand and long-term value. With its attractive features and strong investment potential, this property stands as a promising asset within the thriving multifamily market. Don't miss the chance to capitalize on this compelling opportunity in the heart of South Florida's dynamic real estate landscape.

Property Highlights

Offering Summary

Sale Price:	\$1,422,500
Number of Units:	4
Lot Size:	0.22 Acres
Building Size:	2,234 SF

Demographics	0.3 Miles	0.5 Miles	1 Mile
Total Households	332	1,361	3,378
Total Population	604	2,404	6,255
Average HH Income	\$151,549	\$159,195	\$138,032



Chip Armstrong
Director of Commercial Sales

561.371.3787
chiparmstrong@keyes.com



Liz Nunes
Director of Luxury Sales

561.351.4529
lnunes@ipre.com

The Keyes Company Mr. Chip Armstrong, 11290 Legacy Avenue, Suite 210, Palm Beach Gardens, FL 33410 keyescommercial.com

This information has been secured from sources we believe to be reliable, but we make no representations nor warranties, express nor implied as to the accuracy of the information. References to square footage are approximate. Buyer must verify the information and bears all risks for any inaccuracies.



Chip Armstrong
Director of Commercial Sales

561.371.3787
chiparmstrong@keyes.com

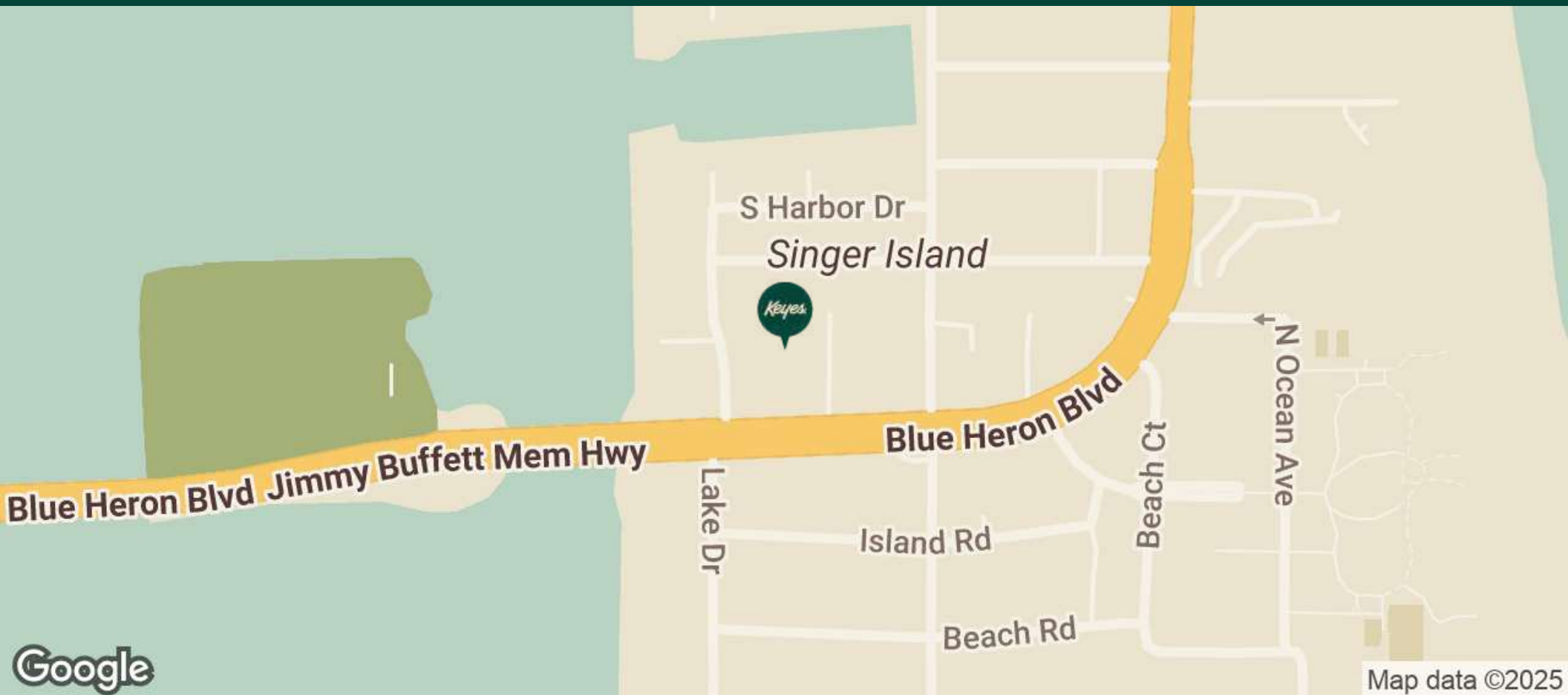


Liz Nunes
Director of Luxury Sales

561.351.4529
lnunes@ipre.com

The Keyes Company Mr. Chip Armstrong, 11290 Legacy Avenue, Suite 210, Palm Beach Gardens, FL 33410 keyescommercial.com

This information has been secured from sources we believe to be reliable, but we make no representations nor warranties, express nor implied as to the accuracy of the information. References to square footage are approximate. Buyer must verify the information and bears all risks for any inaccuracies.



Chip Armstrong
Director of Commercial Sales
561.371.3787
chiparmstrong@keyes.com



Liz Nunes
Director of Luxury Sales
561.351.4529
lnunes@ipre.com

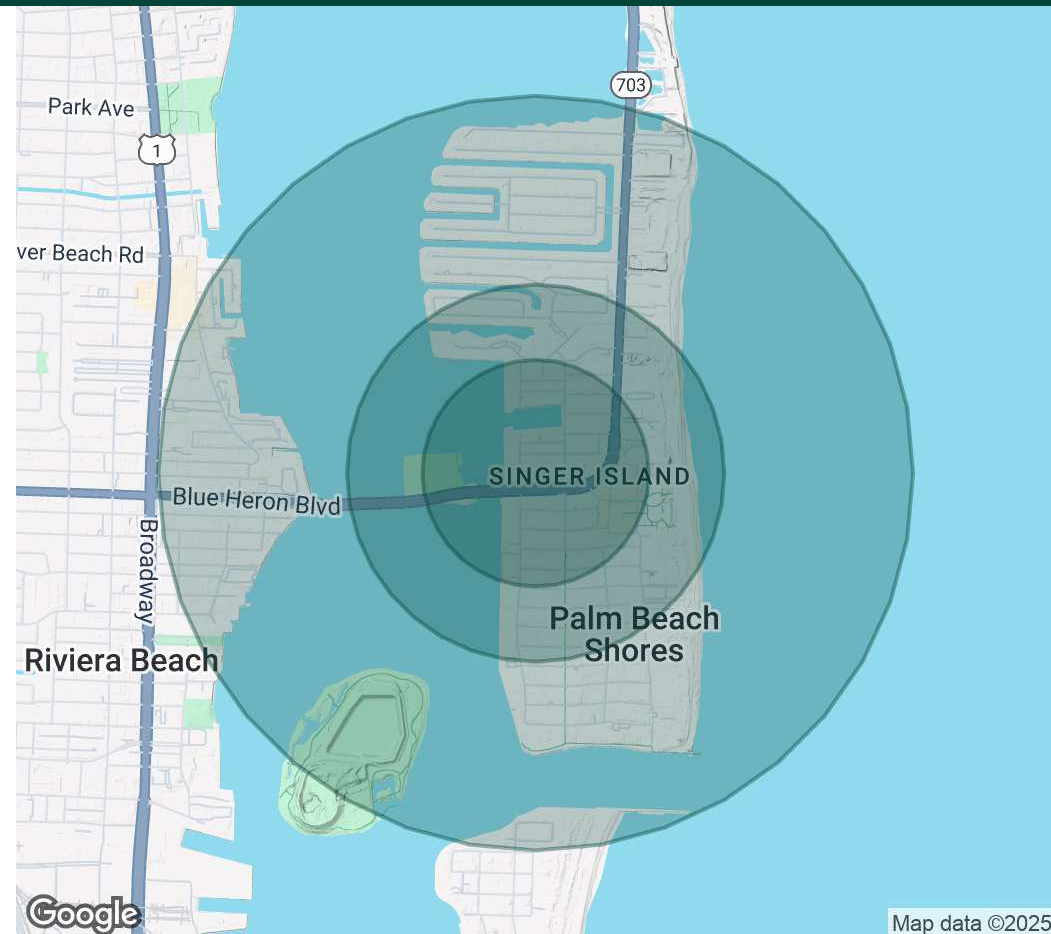
The Keyes Company Mr. Chip Armstrong, 11290 Legacy Avenue, Suite 210, Palm Beach Gardens, FL 33410 keyescommercial.com

This information has been secured from sources we believe to be reliable, but we make no representations nor warranties, express nor implied as to the accuracy of the information. References to square footage are approximate. Buyer must verify the information and bears all risks for any inaccuracies.

Population	0.3 Miles	0.5 Miles	1 Mile
Total Population	604	2,404	6,255
Average Age	59	62	57
Average Age (Male)	59	62	57
Average Age (Female)	60	62	57

Households & Income	0.3 Miles	0.5 Miles	1 Mile
Total Households	332	1,361	3,378
# of Persons per HH	1.8	1.8	1.9
Average HH Income	\$151,549	\$159,195	\$138,032
Average House Value	\$937,859	\$998,853	\$850,860

Demographics data derived from AlphaMap



Chip Armstrong
Director of Commercial Sales

561.371.3787
chiparmstrong@keyes.com



Liz Nunes
Director of Luxury Sales

561.351.4529
lnunes@ipre.com

The Keyes Company Mr. Chip Armstrong, 11290 Legacy Avenue, Suite 210, Palm Beach Gardens, FL 33410 keyescommercial.com

This information has been secured from sources we believe to be reliable, but we make no representations nor warranties, express nor implied as to the accuracy of the information. References to square footage are approximate. Buyer must verify the information and bears all risks for any inaccuracies.