

# Stoneybrook Exchange

Section 36, Township 22 South, Range 27 East,  
Winter Garden, Florida  
UNIT BOUNDARIES

SHEET 3 OF 3

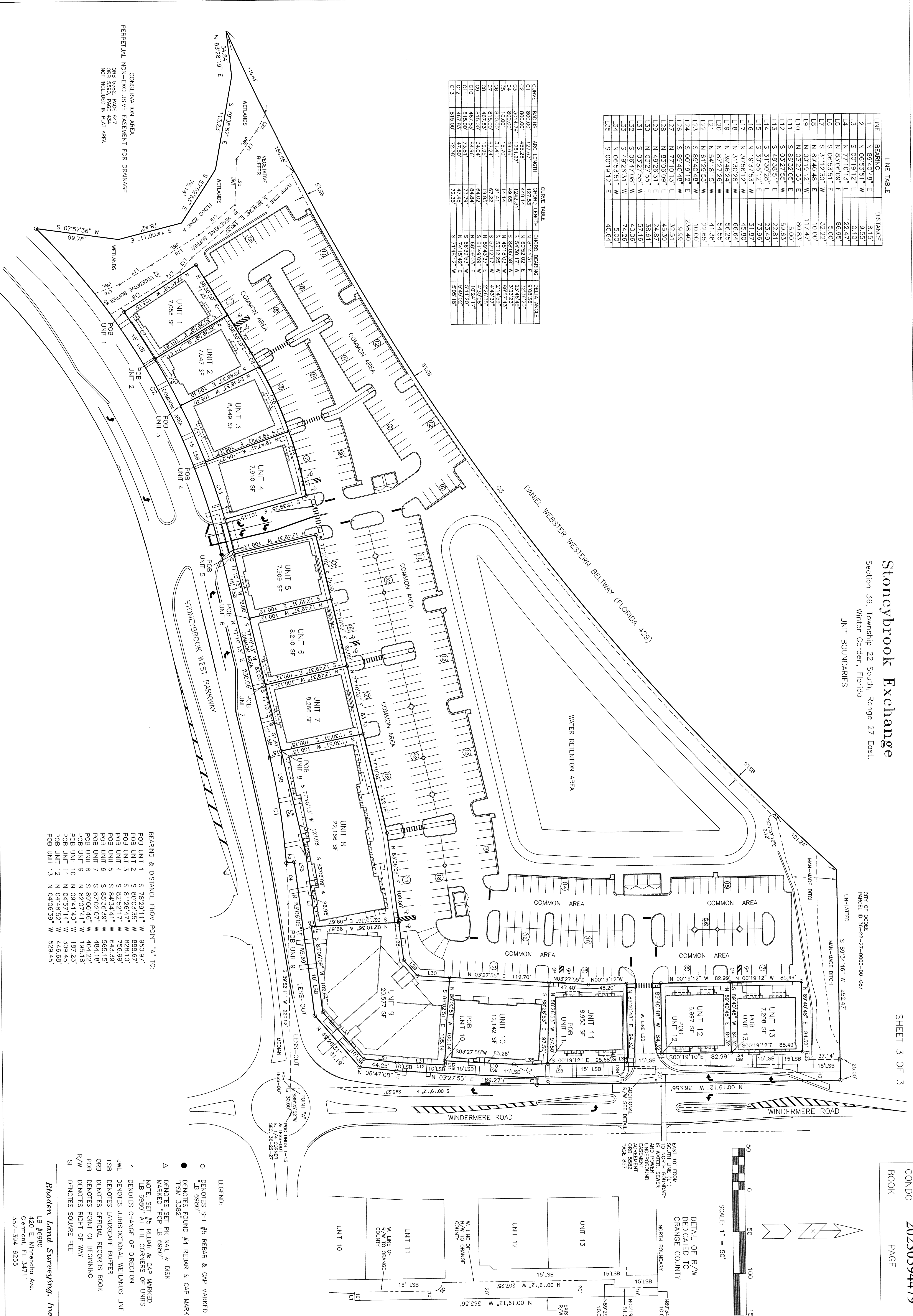
CONDO BOOK PAGE  
20230594479

LINE TABLE

LINE	BEARING	DISTANCE
L1	N 89°40'48" E	8.15'
L2	N 88°53'51" W	9.55'
L3	N 00°19'12" E	0.10'
L4	S 97°19'13" E	122.47'
L5	N 83°08'09" E	86.95'
L6	S 08°53'59" E	5.00'
L7	S 31°12'30" W	32.22'
L8	N 89°40'48" E	10.00'
L9	N 00°19'12" W	117.47'
L10	N 03°27'55" E	80.83'
L11	S 88°32'05" E	9.00'
L12	S 03°27'55" W	59.63'
L13	S 46°38'51" E	22.81'
L14	S 31°30'28" E	23.49'
L15	S 30°58'12" E	73.89'
L16	N 19°27'55" W	31.89'
L17	N 30°56'12" W	49.80'
L18	N 31°30'28" W	86.64'
L19	N 39°46'24" W	96.23'
L20	N 87°27'26" W	94.35'
L21	N 54°18'15" W	41.38'
L22	N 61°29'53" W	22.65'
L23	S 89°40'48" E	10.00'
L24	S 00°19'12" E	236.40'
L25	S 89°40'48" W	9.99'
L26	N 77°10'13" E	32.51'
L27	N 77°10'13" E	45.39'
L28	N 83°06'09" E	24.87'
L29	N 49°26'31" E	38.61'
L30	N 03°27'55" E	57.16'
L31	S 03°27'55" W	40.06'
L32	S 06°47'08" W	74.26'
L33	S 49°26'31" W	5.00'
L34	N 06°53'51" W	40.64'
L35	S 00°19'12" E	40.64'

CURVE TABLE

CURVE	RADIUS	ARC LENGTH	CHORD LENGTH	CHORD BEARING	DELTA ANGLE
C1	800.00'	127.67'	127.63'	N 81°44'31" E	9°08'56"
C2	800.00'	455.28'	448.14'	N 60°29'02" E	32°36'20"
C3	304.29'	428.12'	448.31'	S 88°05'58" W	33°32'23"
C4	304.29'	428.12'	448.31'	S 88°05'58" W	33°32'23"
C5	10.00'	15.70'	14.14'	N 49°18'03" W	89°57'43"
C6	800.00'	51.41'	51.41'	S 53°12'28" W	2°14'59"
C7	815.00'	67.24'	67.24'	S 57°12'17" W	44.33°
C8	487.83'	63.95'	63.95'	S 81°48'09" W	43°00'08"
C9	487.83'	63.95'	63.95'	S 81°48'09" W	43°00'08"
C10	487.83'	63.95'	63.95'	S 81°48'09" W	43°00'08"
C11	815.00'	73.81'	73.79'	N 68°39'53" W	51°17'20"
C12	487.83'	47.50'	47.50'	N 74°15'42" E	5°48'02"
C13	815.00'	72.38'	72.38'	N 74°15'42" E	5°48'18"



BEARING & DISTANCE FROM POINT "A" TO:

POB UNIT 1 S 78°29'11" W 950.97'  
 POB UNIT 2 S 80°03'55" W 888.67'  
 POB UNIT 3 S 81°26'47" W 828.10'  
 POB UNIT 4 S 82°52'17" W 756.99'  
 POB UNIT 5 S 84°34'41" W 643.39'  
 POB UNIT 6 S 85°36'39" W 565.15'  
 POB UNIT 7 S 87°02'07" W 484.18'  
 POB UNIT 8 S 87°02'07" W 484.18'  
 POB UNIT 9 N 82°07'41" W 195.18'  
 POB UNIT 10 N 09°41'40" W 187.23'  
 POB UNIT 11 N 04°57'14" W 309.45'  
 POB UNIT 12 N 04°48'52" W 446.68'  
 POB UNIT 13 N 04°06'59" W 529.45'

LEGEND:

- DENOTES SET #5 REBAR & CAP MARKED "LB 6980"
- DENOTES SET #4 REBAR & CAP MARKED "PSM 3362"
- ▲ DENOTES SET PK NAIL & DISK MARKED "PCP LB 6980"
- NOTE: SET #5 REBAR & CAP MARKED "LB 6980" AT THE CORNERS OF UNITS.
- DENOTES CHANGE OF DIRECTION
- DENOTES JURISDICTIONAL WETLANDS LINE
- DENOTES LANDSCAPE BUFFER
- DENOTES OFFICIAL RECORDS BOOK
- DENOTES POINT OF BEGINNING
- R/W DENOTES RIGHT OF WAY
- DENOTES SQUARE FEET

Rhoden Land Surveying, Inc.  
 LB #6980  
 420 E. Minnesota Ave.  
 Clermont, FL 34711  
 352-394-6255