

FOR SUBLEASE

HISTORIC DOWNTOWN OFFICE BUILDING

916 Main Street | Vancouver, WA 98660

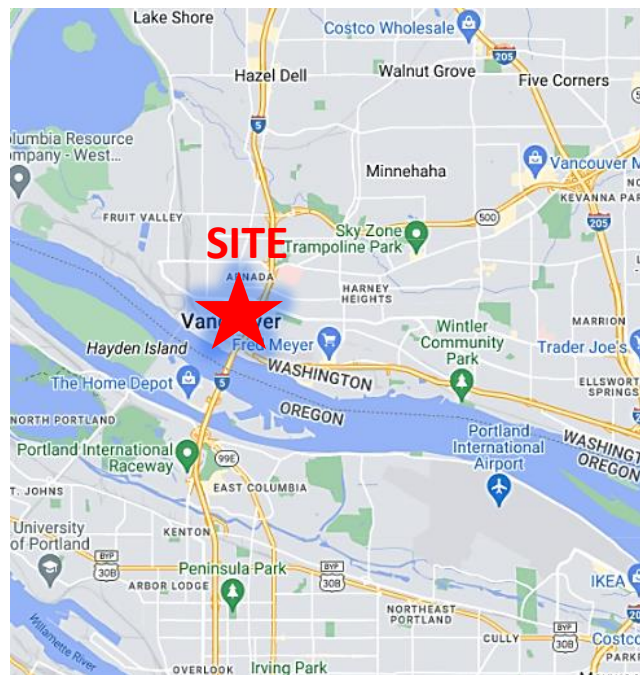


900 Washington St, Suite 850, Vancouver, WA
360.750.5595 | www.fg-cre.com



PROPERTY HIGHLIGHTS

- Located in the heart of downtown Vancouver at the intersection of Evergreen Blvd and Main Street
- Available:
 - Suite 100 – 3,697 RSF
 - First floor space built out with a mix of private offices, reception area, open area and lunchroom
 - \$22.00/SF Modified Gross (excludes janitorial and utilities)
- Parking available onsite for \$50.00/each (5-7 parking spaces)
- Plug and play office space ready for new tenant
- Sublease term expires 12/31/26



FOR MORE INFORMATION:

Doug Bartocci, CCIM | 360.597.0575 | dbartocci@fg-cre.com
Adam Roselli, CCIM, SIOR | 360.597.0568 | aroselli@fg-cre.com

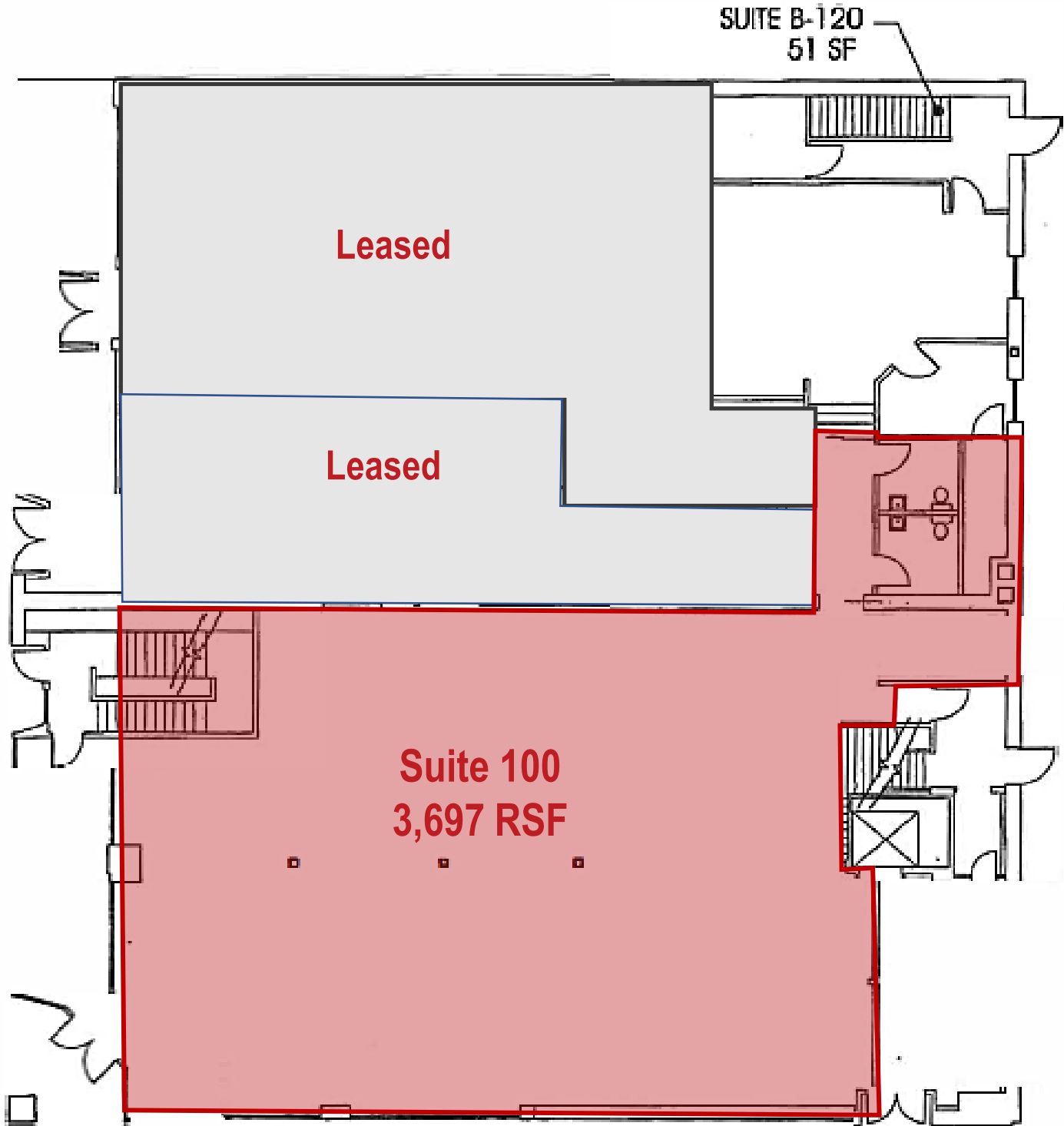
FOR SUBLEASE

HISTORIC DOWNTOWN OFFICE BUILDING

916 Main Street | Vancouver, WA 98660



900 Washington St, Suite 850, Vancouver, WA
360.750.5595 | www.fg-cre.com



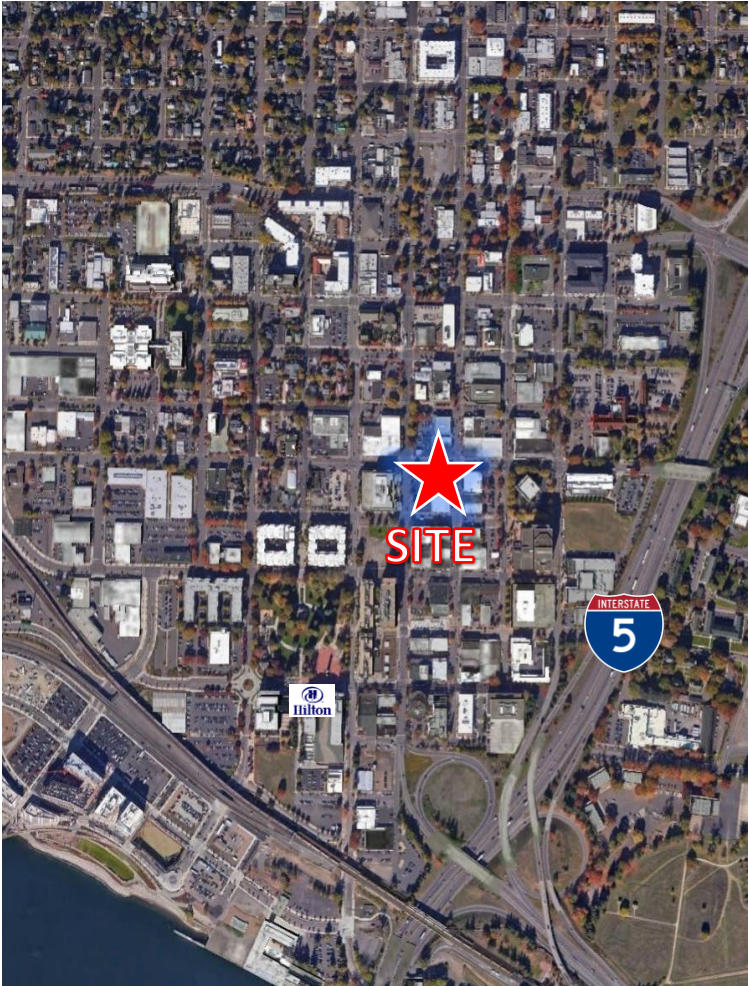
FOR SUBLEASE

HISTORIC DOWNTOWN OFFICE BUILDING

916 Main Street | Vancouver, WA 98660



900 Washington St, Suite 850, Vancouver, WA
360.750.5595 | www.fg-cre.com



This statement with the information it contains is given with the understanding that all the negotiations relating to the purchase, rental or leasing of the property described above shall be conducted through this office. The above information, while not guaranteed, has been secured from sources we believe to be reliable.