

FOR LEASE

Professional
Office Suites



AVAILABLE SUITES:

200: 1,611 SF

300: 1,997 SF

401: 4,683 SF

5999 Central Ave
Saint Petersburg, Florida 33701



Blakemore Kearney
BKearney@Vectorrealty.com
727-455-5150



Ned Willis
NWillis@Vectorrealty.com
727-481-3356

www.VectorRealty.com
125 5th Street South Suite 201
Saint Petersburg, Florida 33704
727-823-1230

EXECUTIVE SUMMARY

Central Place, located at 5999 Central Avenue, is a four-story professional office building at the geographic heart of St. Petersburg, between the downtown core and the Gulf beaches.

The lobby, elevators, bathrooms, and common areas were updated in 2022.

Tenants can enjoy the Side Door Deli, an on-site café for breakfast and lunch, as well as Red Mesa Mercado right next door. The surrounding stretch of Central continues to attract new retail, dining, and professional service tenants as businesses seek alternatives to downtown.

The property also offers ample free surface parking and on-site maintenance staff. The adjacent building at 5959 Central houses a Johns Hopkins All Children's practice, reinforcing the corridor's growing medical office profile.

Central Place offers a well-located, well-maintained home base for professional, medical, and executive office users who want to be in the heart of St. Pete.



LOCATION

5999 Central Ave
St. Petersburg, FL 33701



LEASE RATE

\$25 PSF Full Service



COMMON AREA

Upgrades in 2022



PARKING

Free On-Site Parking

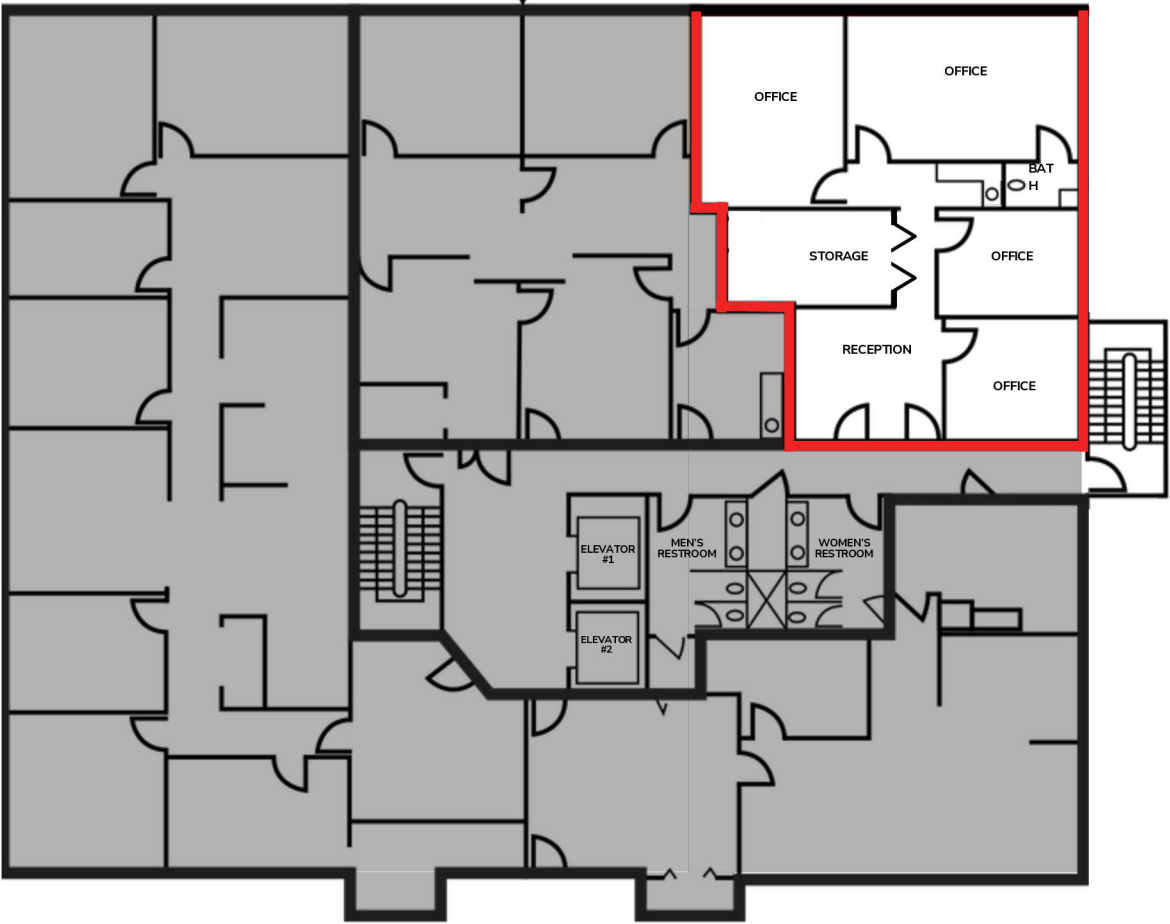


FEATURES

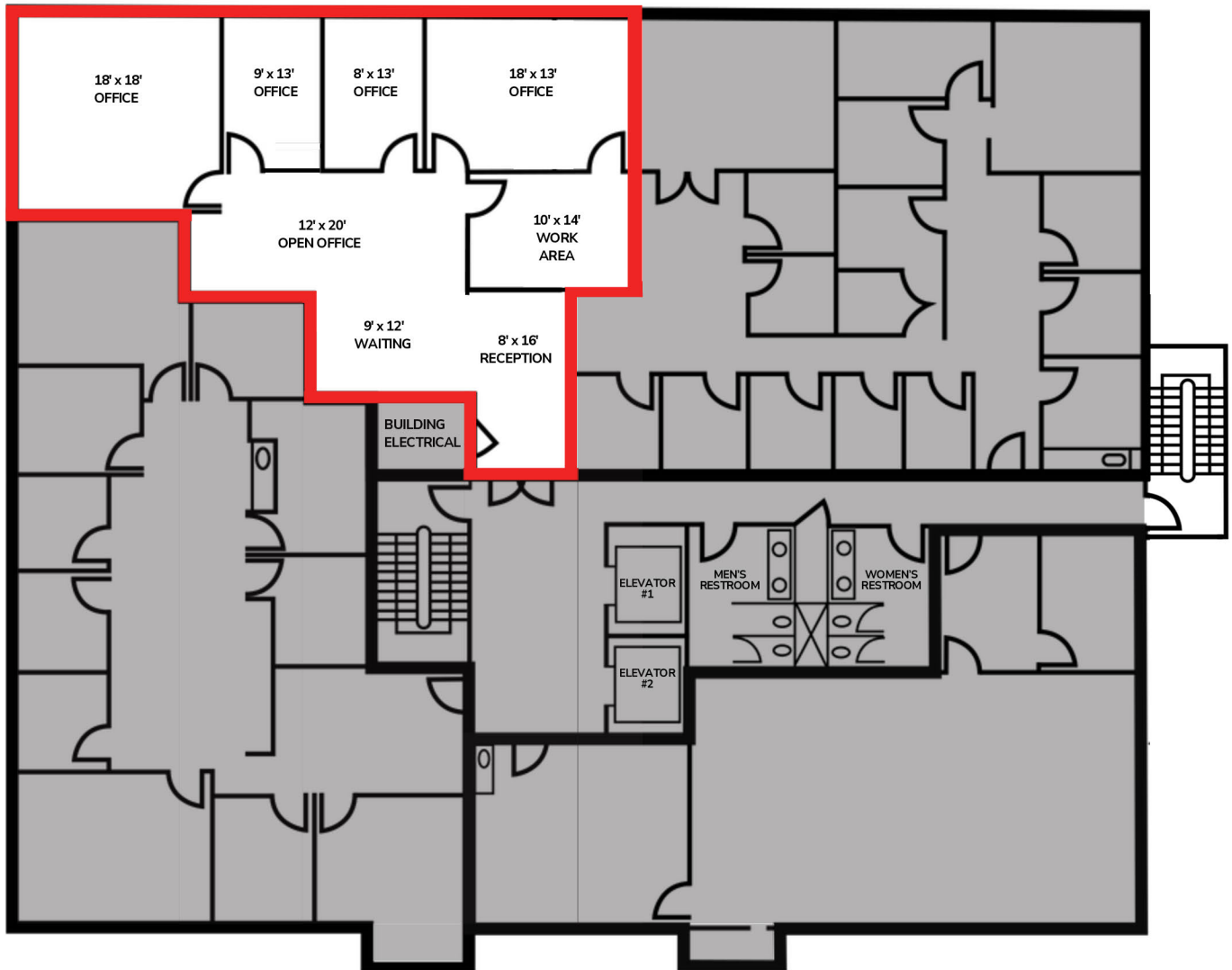
On-site Café

Suite 200 Floorplan

1,611 SF



Suite 300 Floorplan 1,997 SF



Suite 401 Floorplan 4,683 SF

