

LEGEND



POINT  
Logistics Crossing



**FOR LEASE**  
**19,181 SF**

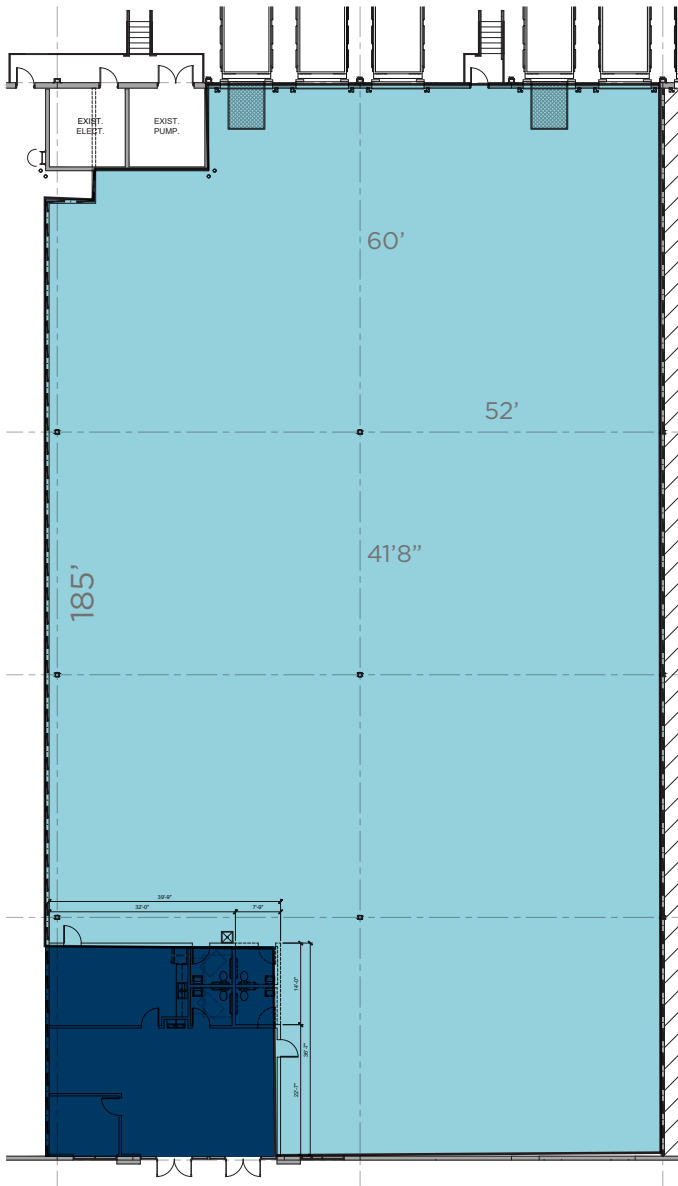
## IDEAL LOCATION FOR LOCAL, REGIONAL AND NATIONAL DISTRIBUTION

Legend Point Logistics Crossing is located in fast growing north St. Johns County. The beautiful Class-A industrial park is the middle of one of Florida's major population growth areas and has access to ±1.3 million consumers within a 30 minute drive, making it the ideal location for last mile distribution.

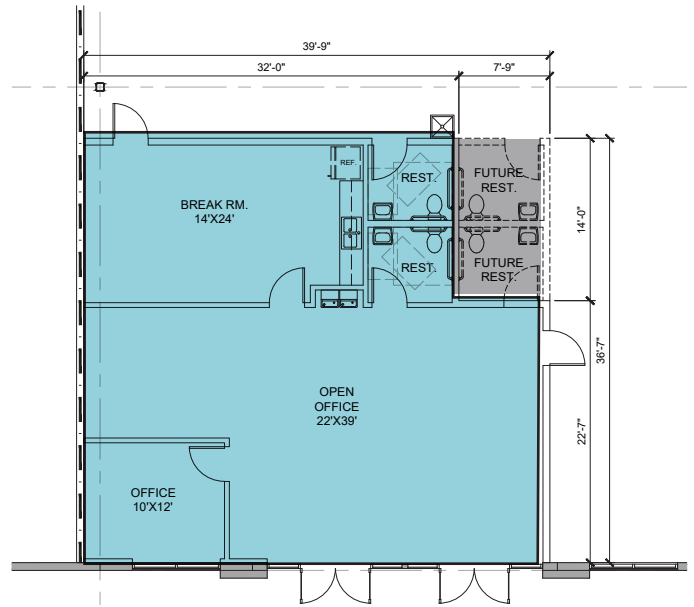
- New St. Johns County Warehouse
- First Generation Space
- Beautiful Park-like Campus
- Just Minutes to I-95 Access
- St. Johns County is Designated Foreign Trade Zone 64

# FOR LEASE

19,181 SF AVAILABLE



1,400 SF OFFICE



## BUILDING 2 - 220 ACCOLADE AVE

BUILDING SIZE:	89,967 SF
SUITE SIZE:	19,181 SF
OFFICE SIZE:	1,400 SF
CEILING HEIGHT:	28'
COLUMN SPACING:	41'8" x 52' Typical 60' Speed Bay
SPRINKLERS:	ESFR
DOCK DOORS:	5 (9'x10')
AUTO PARKING:	82 Auto
TRAILER PARKING:	76 (Shared)

### CONTACT INFORMATION:

**TYLER NEWMAN**  
Executive Managing Director  
+1 904 380 8336  
tyler.newman@cushwake.com

**JACOB HORSLEY**  
Executive Managing Director  
+1 904 380 8335  
jacob.horsley@cushwake.com

FOR MORE INFORMATION,  
PLEASE VISIT OUR WEBSITE:  
[WWW.LEGENDPOINTLC.COM](http://WWW.LEGENDPOINTLC.COM)

©2024 Cushman & Wakefield. All rights reserved. The information contained in this communication is strictly confidential. This information has been obtained from sources believed to be reliable but has not been verified. NO WARRANTY OR REPRESENTATION, EXPRESS OR IMPLIED, IS MADE AS TO THE CONDITION OF THE PROPERTY (OR PROPERTIES) REFERENCED HEREIN OR AS TO THE ACCURACY OR COMPLETENESS OF THE INFORMATION CONTAINED HEREIN, AND SAME IS SUBMITTED SUBJECT TO ERRORS, OMISSIONS, CHANGE OF PRICE, RENTAL OR OTHER CONDITIONS, WITHDRAWAL WITHOUT NOTICE, AND TO ANY SPECIAL LISTING CONDITIONS IMPOSED BY THE PROPERTY OWNER(S). ANY PROJECTIONS, OPINIONS OR ESTIMATES ARE SUBJECT TO UNCERTAINTY AND DO NOT SIGNIFY CURRENT OR FUTURE PROPERTY PERFORMANCE.



**SCANNELL**  
PROPERTIES