

2550

N Hollywood Way



CLASS A OFFICE BUILDING

Burbank Airport Center

WHY BURBANK AIRPORT CENTER

2550 N. Hollywood Way is the closest office building to the Burbank Airport with a Marriott Hotel right next door. This 6-story building is located in an amenity-rich area with an on-campus Daily Grill restaurant, ATM, convenience shop, and express mail drop. There are additional restaurants and fast-food options right across the street including Starbucks, Panda Express, McDonald's, and more.

The property can accommodate tenants ranging in size from 1,408 s.f. up to 14,706 s.f.



2550 N Hollywood Way



MEDICAL USE OPPORTUNITIES



**OFFICE: \$3.75 FSG
MEDICAL: \$4.05 FSG**



**3/1,000 FREE PARKING
ADDITIONAL PARKING AVAILABLE
FOR A SMALL FEE**



**LIGHTING SPEED FIBER
OPTIC WI-FI IN HOUSE**



EV CHARGING STATIONS



**BEAUTIFUL VIEWS OF
THE BURBANK AIRPORT**



**EASY ACCESS TO FREEWAYS,
PUBLIC TRANSPORTATION &
BURBANK AIRPORT**



**ON-SITE BUILDING
ENGINEER/MAINTENANCE**

A PLACE TO WORK AND GROW

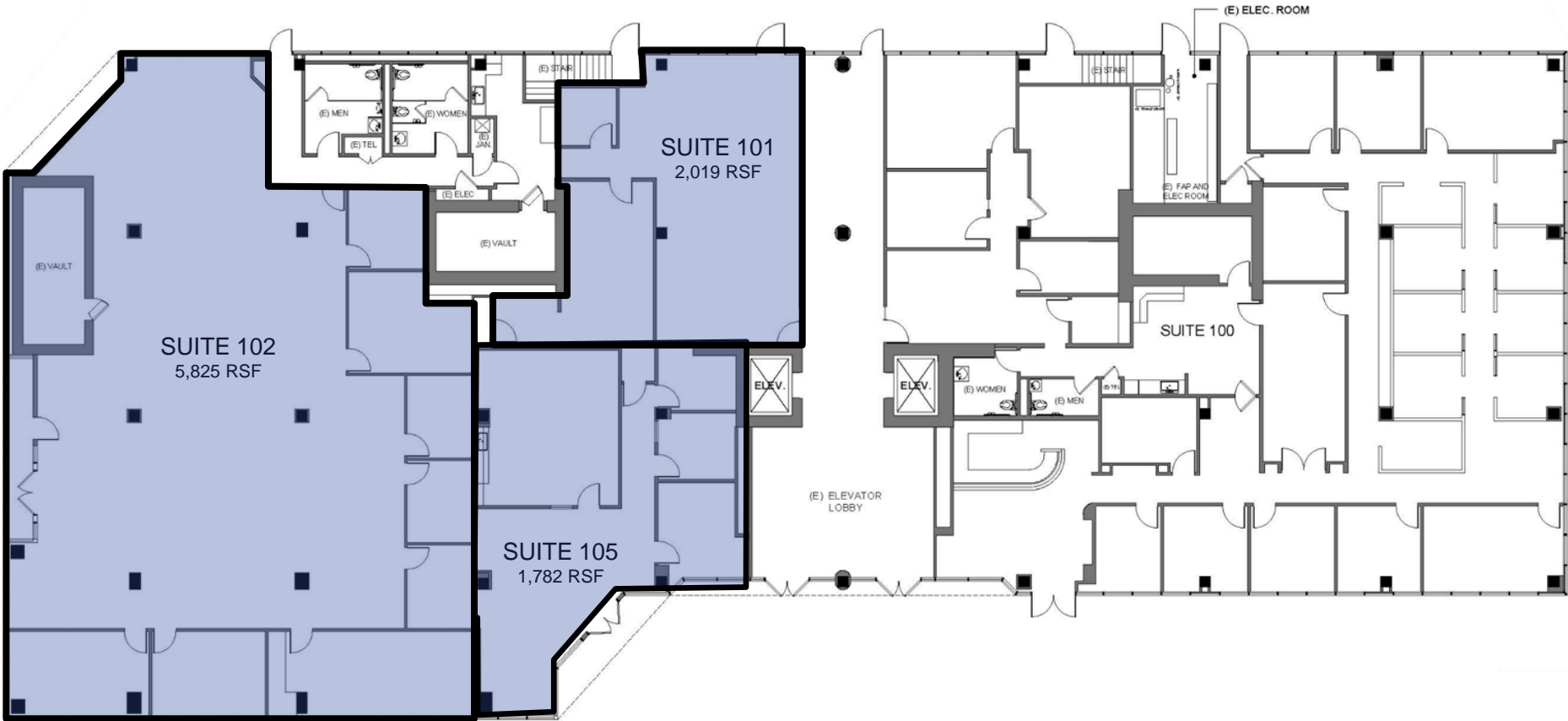


SUITE 101, 102 and 105

Suite 101 | 2,019 SF • Separate external entrance to suite 102 & suite 105

Suite 102 | 5,825 SF • Contiguous to 9,626 SF

Suite 105 | 1,782 SF

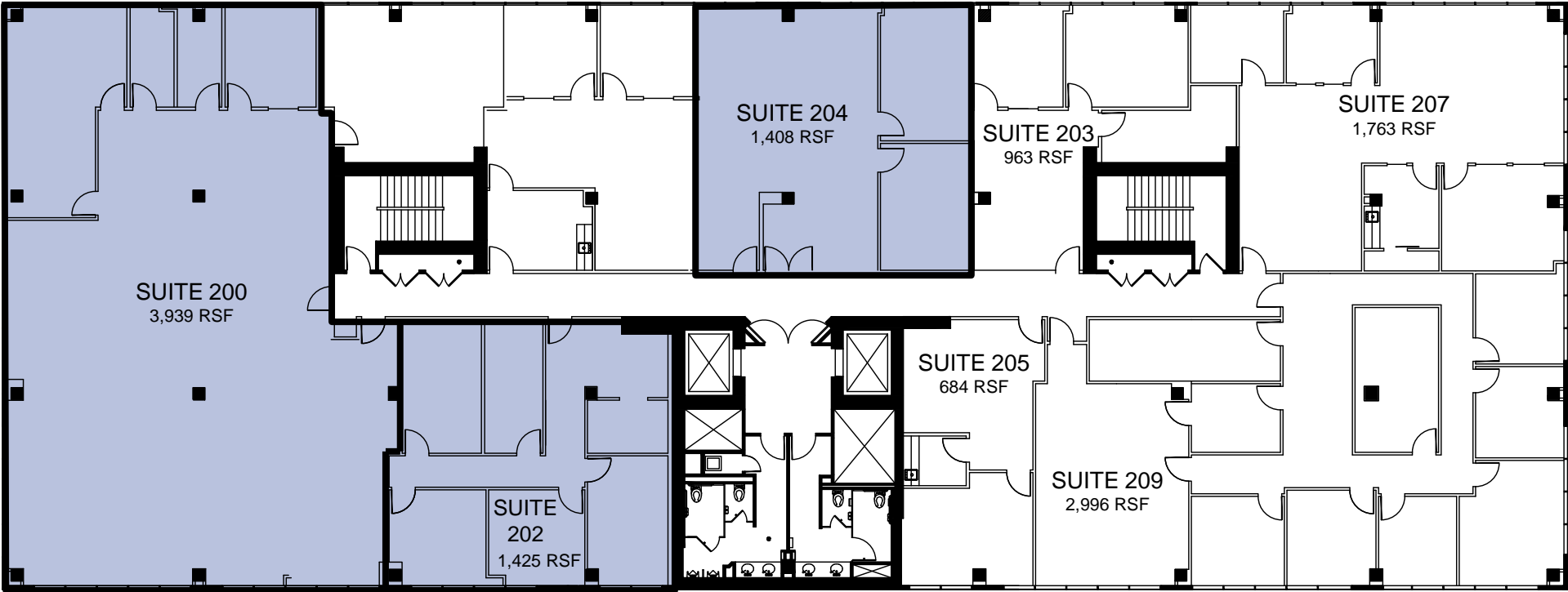


SUITE 200, 202, 203 and 204

Suite 200 | 3,939 SF • Suites 200 and 202 are contiguous to 5,364 SF

Suite 202 | 1,425 SF

Suite 204 | 1,408 SF

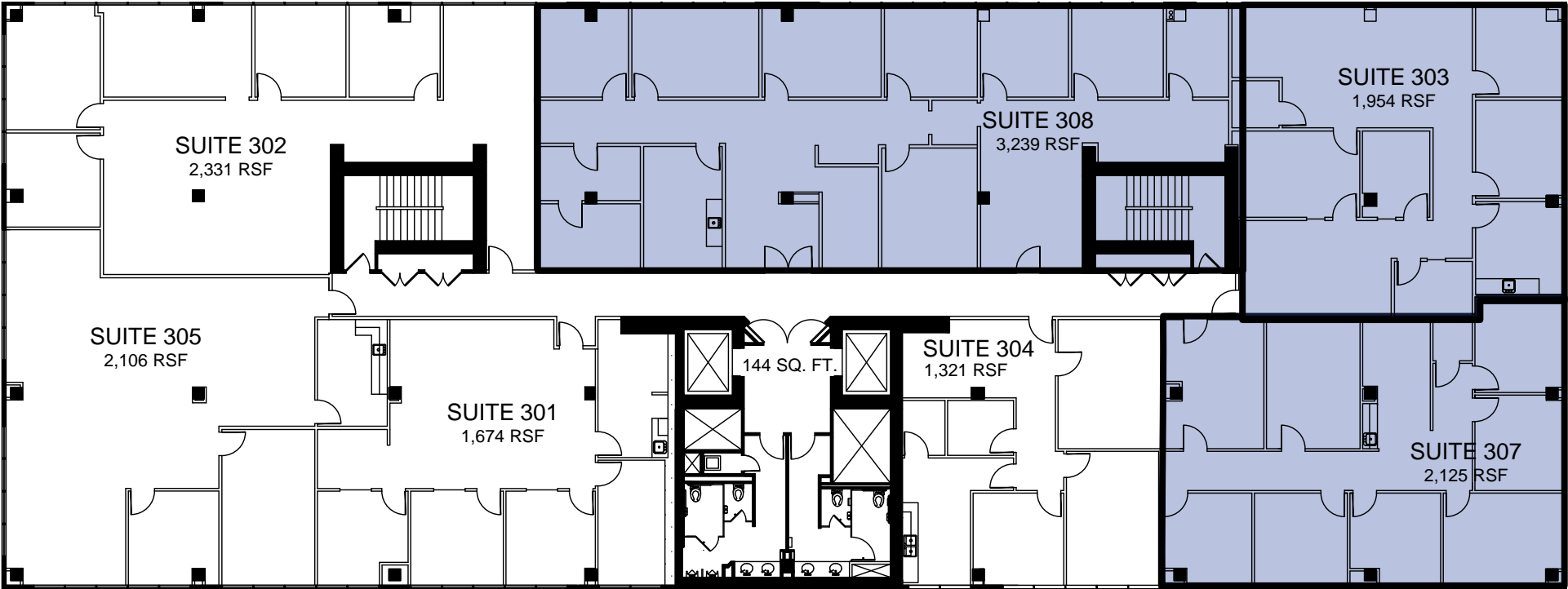


SUITE 303, 307 and 308

Suite 303 | 1,954 SF • Contiguous to 7,318 SF

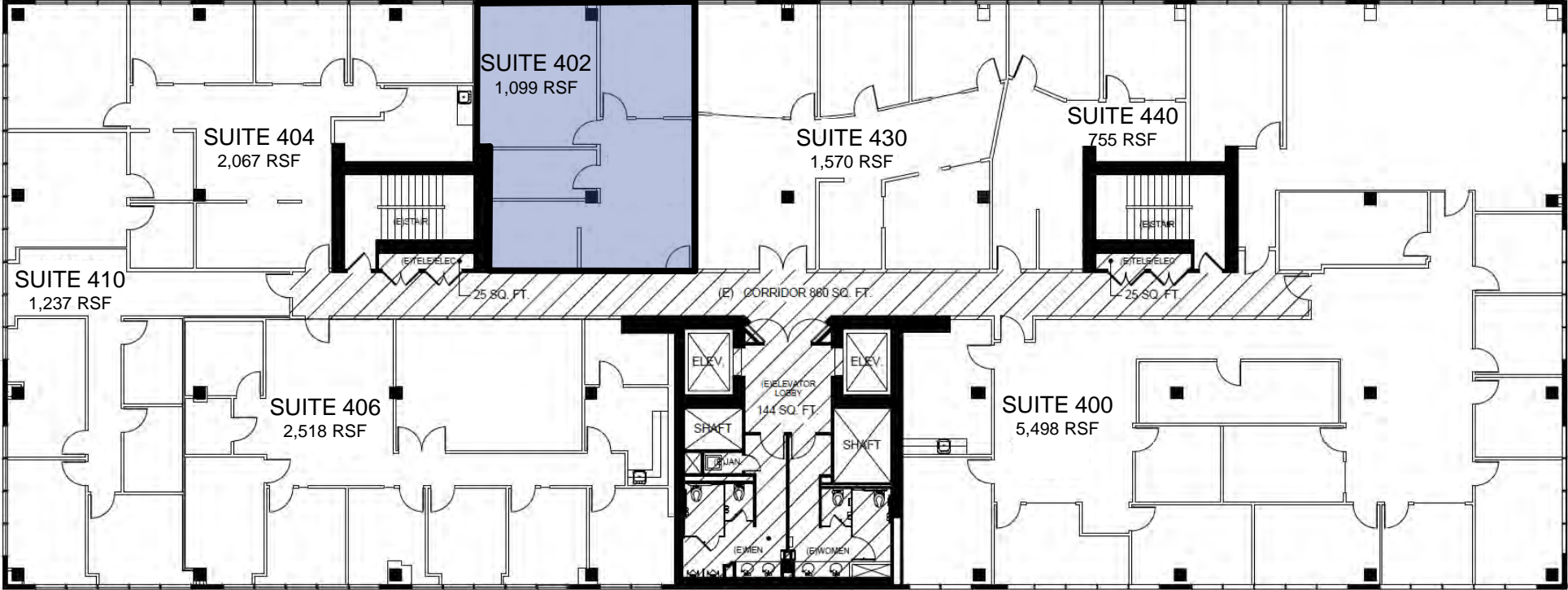
Suite 307 | 2,125 SF

Suite 308 | 3,239 SF



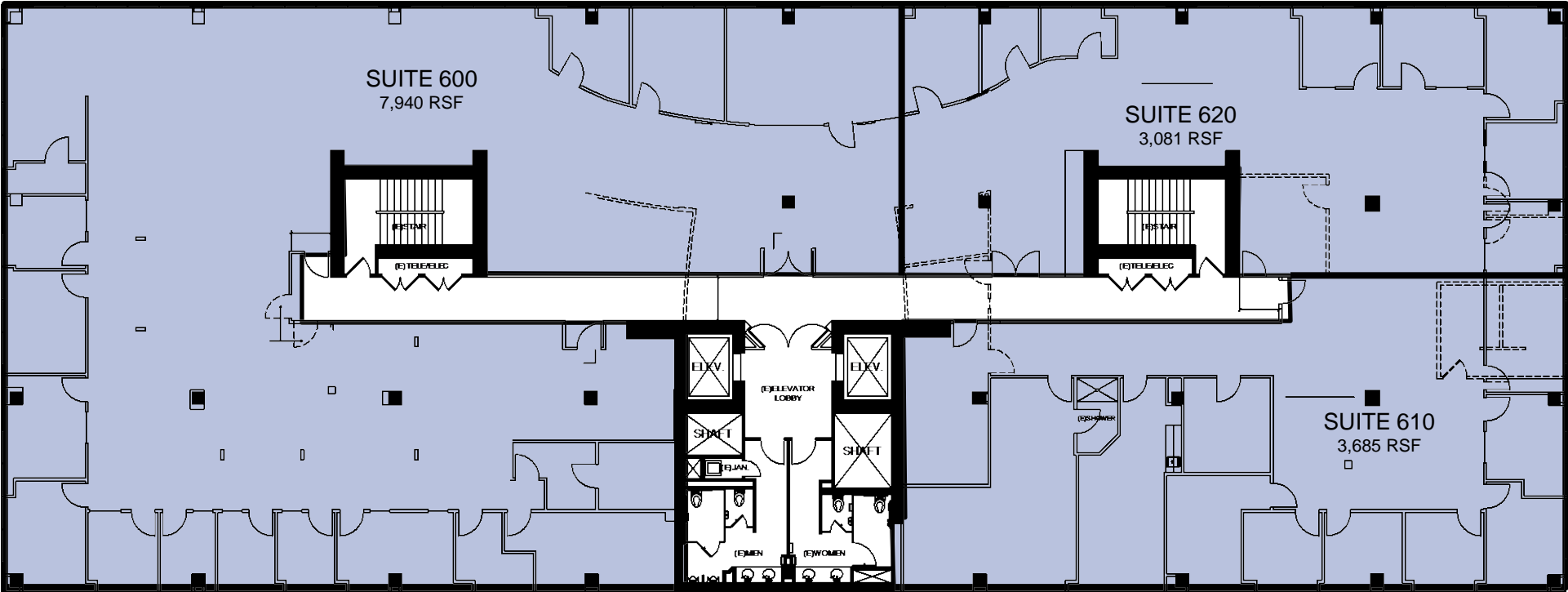
SUITE 402

Suite 402 | 1,099 SF



SUITE 600, 610 and 620

- Suite 600** | 7,940 SF • Open area with numerous offices
- Suite 610** | 3,685 SF • Nice views of planes taking off and landing at the Burbank Airport
- Suite 620** | 3,081 SF • Contiguous to 14,706 SF



WORK DINE & THRIVE



2550 N Hollywood Way



**A PRIME OFFICE
LOCATION FOR
CONNECTION AND
COLLABORATION**

LEASING TEAM

JIM LINDVALL

+1 818 531 9678

jim.lindvall@jll.com

License #01012372

CHLOE SANCHEZ

+1 747 234 3553

chloe.sanchez@jll.com

License #02109571

