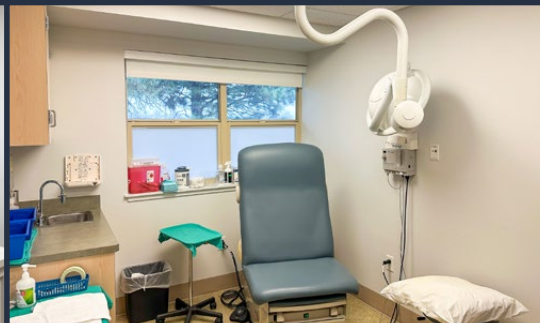
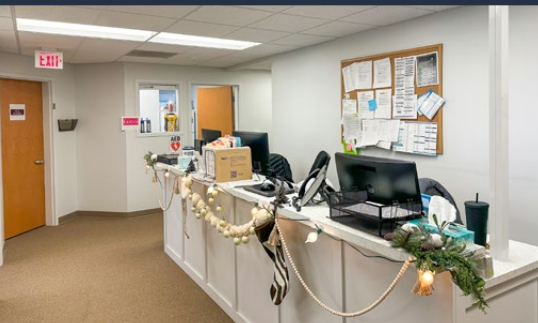


FOR SUBLEASE

1,409 SF | \$2.07/SF/MO. NNN

Medical Office Suite

111 NW Larch Ave., Suite 101, Redmond, OR 97756



PROPERTY DETAILS

Avail. Space:	Suite 101 – 1,409 SF
Sublease Rate:	\$2.07/SF/Mo. NNN
CAMs:	\$0.78/SF/Mo.
Zoning:	Special Service Commercial (C3)
Parking:	Ample onsite spaces
Date Avail.:	February 1, 2024

HIGHLIGHTS

- 6 exam rooms, 2 offices and an in-suite ADA restroom
- Private employee entrance
- Located near Redmond's St. Charles Medical Center
- Access to and from Hwy 97
- Sublease through February 2025

Kristie Schmitt, CCIM

600 SW Columbia St., Ste. 6100 | Bend, OR 97702

541.383.2444 | www.CompassCommercial.com

COMPASS
COMMERCIAL

REAL ESTATE SERVICES

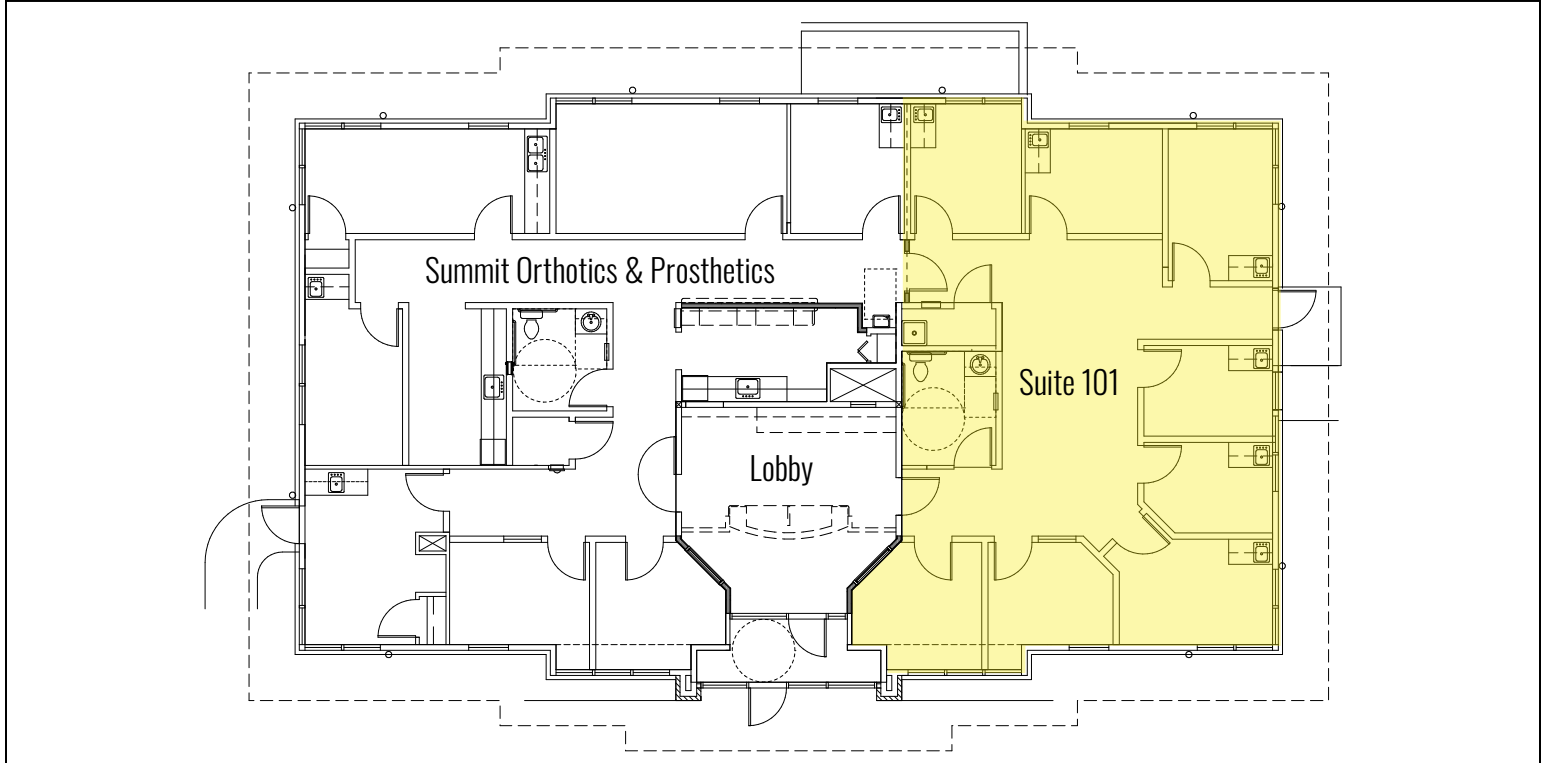
FOR SUBLEASE

1,409 SF | \$2.07/SF/MO. NNN

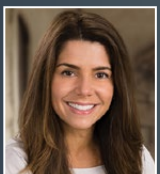
Medical Office Suite

111 NW Larch Ave., Suite 101, Redmond, OR 97756

FLOOR PLAN



Broker is licensed in the state of Oregon. This information has been furnished from sources we deem reliable, but for which we assume no liability. This is an exclusive listing. The information contained herein is given in confidence with the understanding that all negotiations pertaining to this property be handled through Compass Commercial Real Estate Services. All measurements are approximate.



Kristie Schmitt, CCIM

Broker

Cell 541.527.5515

kschmitt@compasscommercial.com

COMPASS
COMMERCIAL

REAL ESTATE
SERVICES