



### Property Highlights

- Single-Story Freestanding Building
- 8 on-site parking spaces located to the rear of the building
- Zoning O-2/T (City of Orlando)
- Monument Signage available

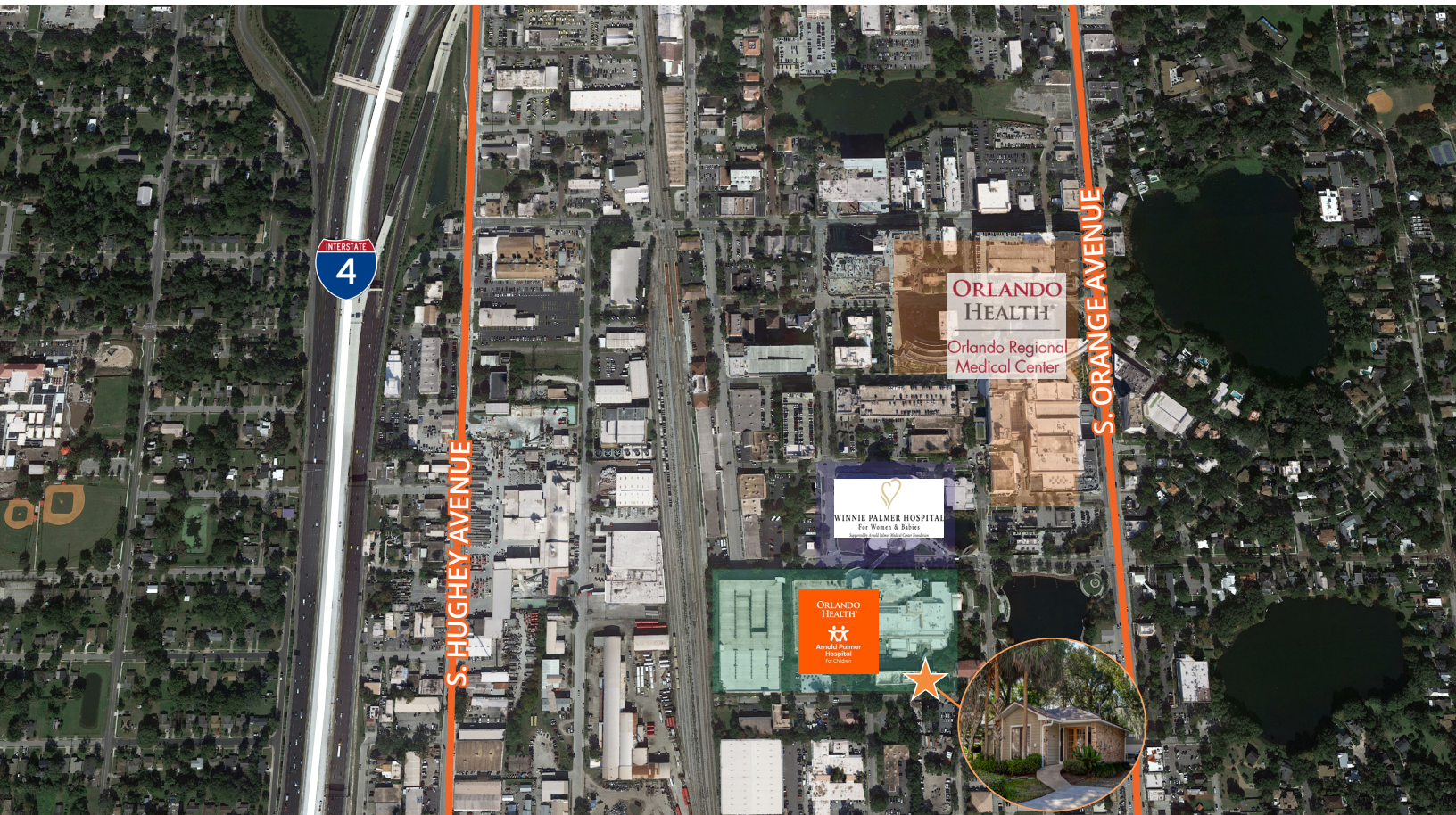
### Location

- Located just south of Downtown Orlando, close to ORMC and Arnold Palmer campuses
- Easy access to Orange Avenue, Interstate-4, S.R. 408 and S.R. 528 (the Beachline)

**Jordan Bohannon**, Senior Vice President  
D 407 219 3502  
C 407 267 6238  
[jordan.bohannon@avisonyoung.com](mailto:jordan.bohannon@avisonyoung.com)

**AVISON  
YOUNG**

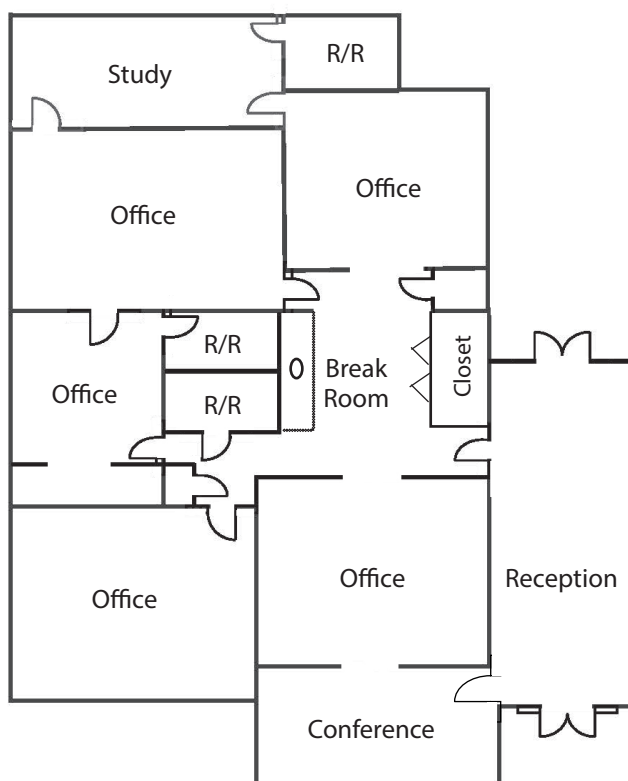
For Lease  
**80 Bonnie Loch Court**  
Orlando, FL 32806



### Nearby Amenities



**1,973± rsf**



**Jordan Bohannon**, Senior Vice President  
D 407 219 3502  
C 407 267 6238  
[jordan.bohannon@avisonyoung.com](mailto:jordan.bohannon@avisonyoung.com)