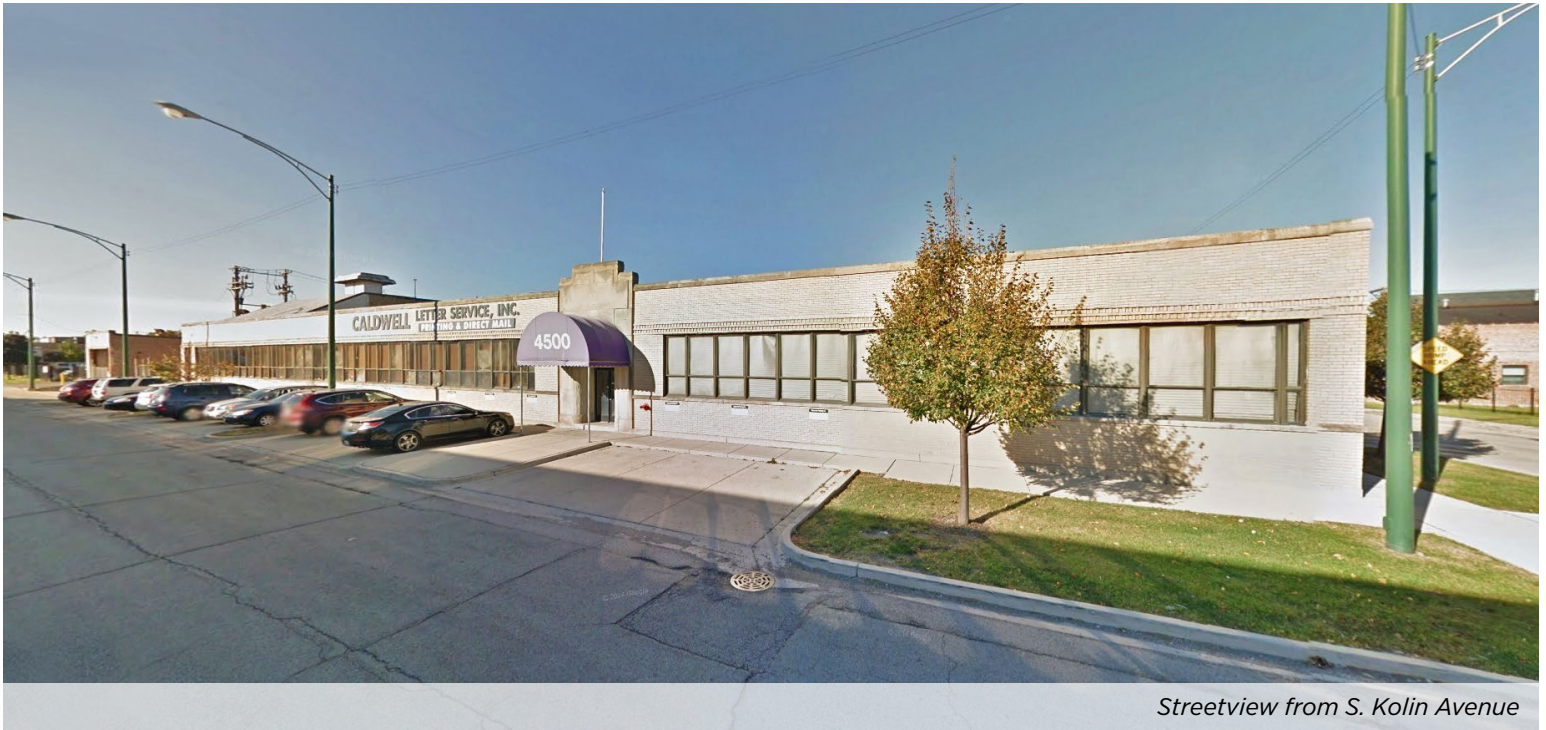


## FOR LEASE

38,265 SF Warehouse  
in Crawford Industrial Park

4500 S. Kolin Avenue  
CHICAGO, IL 60632



Streetview from S. Kolin Avenue

### PROPERTY SPECIFICATIONS

Building Space ± 225,525 Sq. Ft.

Available Space(s) ± 38,265 Sq. Ft.

Office ± 3,000 Sq. Ft.

Land Size 7.27 Acres

Ceiling Height 12' - 16' Clear

Loading 5 Exterior Docks

Zoning M2-3

Lease Rate(s) \$5.25 PSF Modified Gross

Comments

- 38,265 Sq. Ft. warehouse space available in multi-tenant industrial building
- Great warehouse location in Crawford Industrial Park
- Nearby I-55 4-way interchange at Cicero

For more information,  
please contact:

**MARK A. NELSON, SIOR**

Principal

312 267-1101

Mark@NelsonHill.com

**MICHAEL D. NELSON, SIOR**

Principal

312 267-1102

Mike@NelsonHill.com

NelsonHill

1111 S. Western Avenue  
Chicago, IL 60612

All information contained herein is  
from sources deemed reliable and is  
submitted subject to errors, omissions  
and to change of price or terms  
without notice.



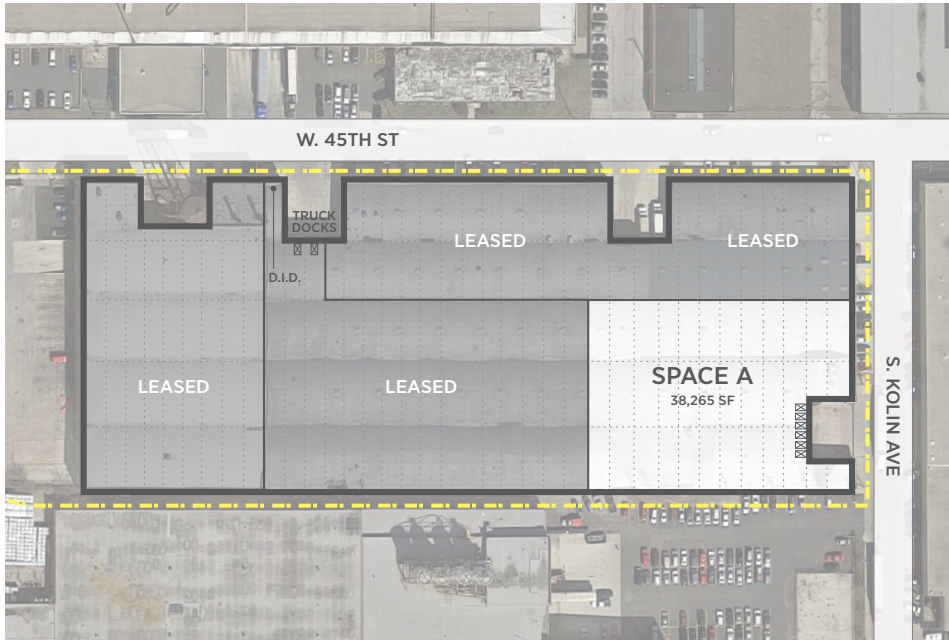
# FOR LEASE

38,265 SF Warehouse  
in Crawford Industrial Park

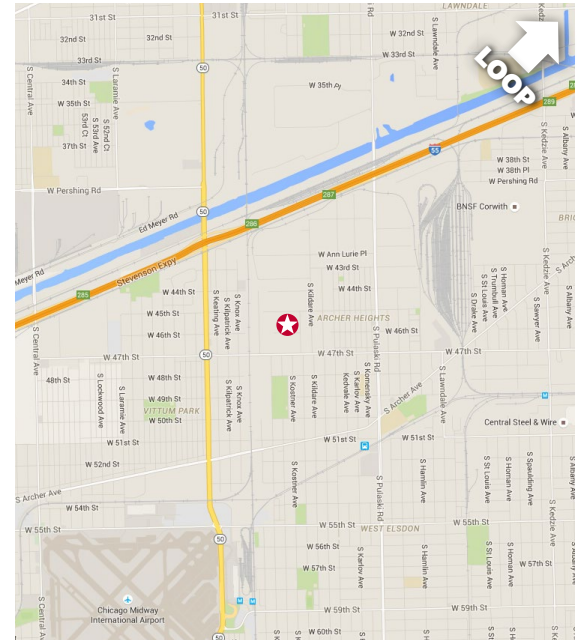
# 4500 S. Kolin Avenue

CHICAGO, IL 60632

## PROPERTY LOCATION



Building Floor Plan



Property Location

## INTERIOR PHOTOS

