



# FOR LEASE - VISTAS II

5516 Falmouth Street, Richmond, VA 23230

36,165 SF Class A Suburban Office Building Located in the Brookfield/Glen Forest Area

- ▶ Immediate access to Interstate-64, major hotels, and retail amenities
- ▶ Excellent glass line
- ▶ 4/1,000 SF parking ratio
- ▶ Close Proximity to HCA Henrico Doctor's Hospital & Bon Secours St. Mary's Hospital

## AVAILABLE SUITE

---

Suite 103      1,314 SF

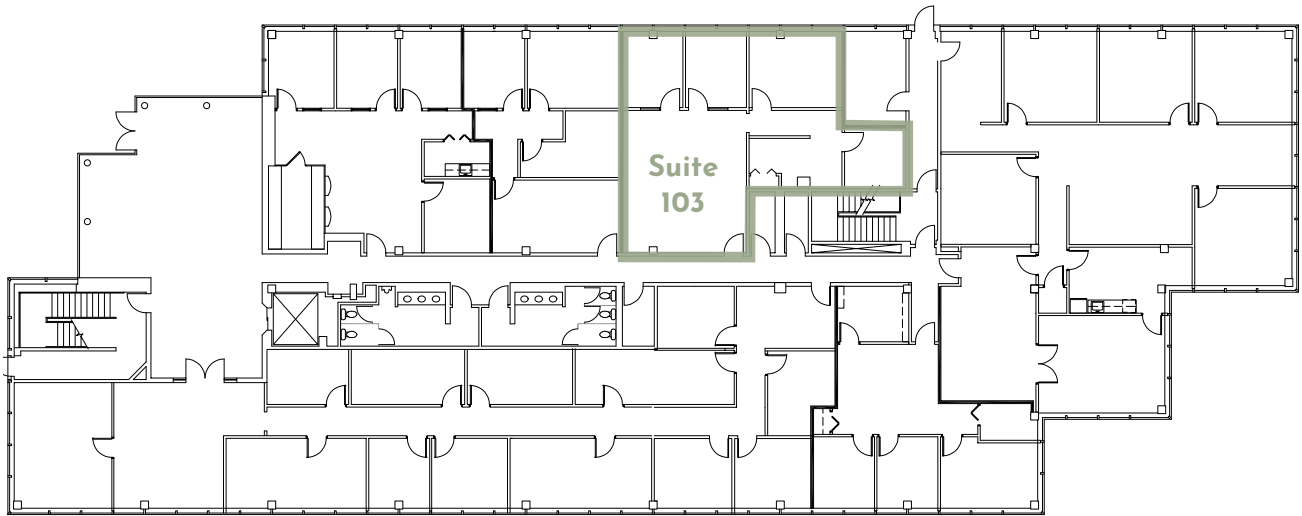
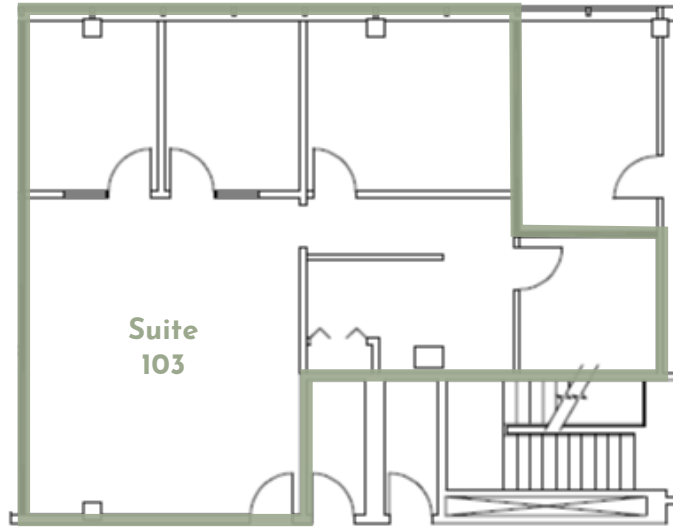
\* 3 Private offices along the window line

\* Breakroom has sink and cabinetry

\* Available 1/1/27

# FIRST FLOOR SUITE

Suite 103 - 1,314 SF



## CONTACT US

**David Wilkins, SIOR**  
*Executive Managing Director*  
dwilkins@rangecommercial.com  
804.873.2569

**Rebecca Barricklow**  
*Senior Vice President*  
rbarricklow@rangecommercial.com  
804.399.4762





# AMENITY-RICH LOCATION

## Midtown64 - Richmond's Signature Mixed-Use Development



46-ACRE MIXED-USE SITE SOON TO BE BUILT NEXT TO THE PROPERTY

- 83,000 SF of Retail and Grocery
- 52,000 SF of Entertainment and Fitness
- 1,000+ Multifamily Units
- Flagship hotel space
- Structured & Surface Parking Areas

**PHASE I  
EXPECTED TO BE  
COMPLETED  
BY 2028**



### Libbie Mill Midtown



90-ACRE MIXED-USE SITE HOME TO TOWNHOMES, CONDOS, APARTMENT UNITS AND RETAIL SPACE



### The Shops At Willow Lawn

22 RETAILERS | 14 RESTAURANTS | 11 SERVICES



## CONTACT US

**David Wilkins, SIOR**  
Executive Managing Director  
dwilkins@rangecommercial.com  
804.873.2569

**Rebecca Barricklow**  
Senior Vice President  
rbarricklow@rangecommercial.com  
804.399.4762

