



±4.04 AC CORDELE, GA

2011 Central Ave., Cordele, GA 31015

Property Summary



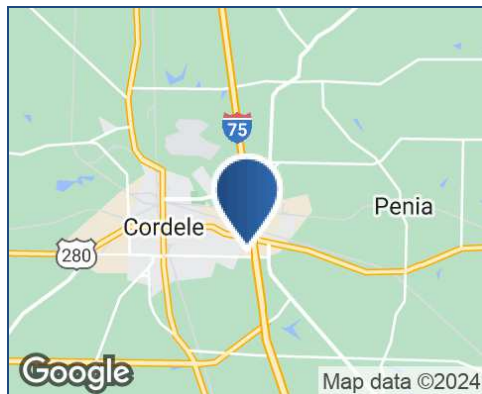
DAILY TRAFFIC CONDITIONS

TRAFFIC COUNT	DAILY TRAFFIC
COUNT	55,590
STREET	I-75

* Figures shown represent estimates

DEMOGRAPHICS - 2024

DEMOGRAPHICS	1 MILE	3 MILE	5 MILE
Estimated Population	1,295	11,921	14,722
Average HH Income	\$87,589	\$74,753	\$74,355
Estimated Households	539	4,799	5,943



PROPERTY HIGHLIGHTS

- ±4.04 acres - Ideal for Hospitality or Retail - Excellent Interstate visibility
- Nearby hotels include Hampton Inn & Suites, Fairfield Inn & Suites by Marriott, Holiday Inn Express, Best Western Colonial Inn, and more
- Nearby retailers include The Home Depot, Walmart, O'Reilly Auto Parts, Harveys Supermarket, Belk, Save A Lot, Walgreens, CVS, Auto Zone, Sherwin Williams, and Tractor Supply Co. among others
- Nearby restaurants include McDonald's, Taco Bell, Krystal, Chick-fil-A, Denny's, Zaxby's, Wendy's, Burger King, Hardee's, KFC, Sonic, Cook Out, Arby's, Golden Corral, Cracker Barrel, and more



KEITH VALENTINE

678.718.1882

KValentine@retail-pa.com

Retail Property Advisors // 678.718.1880 // 2100 RiverEdge Pkwy. // Suite 1050, Atlanta, GA 30328 // Retail-PA.com

ATLANTA // TAMPA // PASADENA, CA // AUBURN // SARASOTA // BALTIMORE

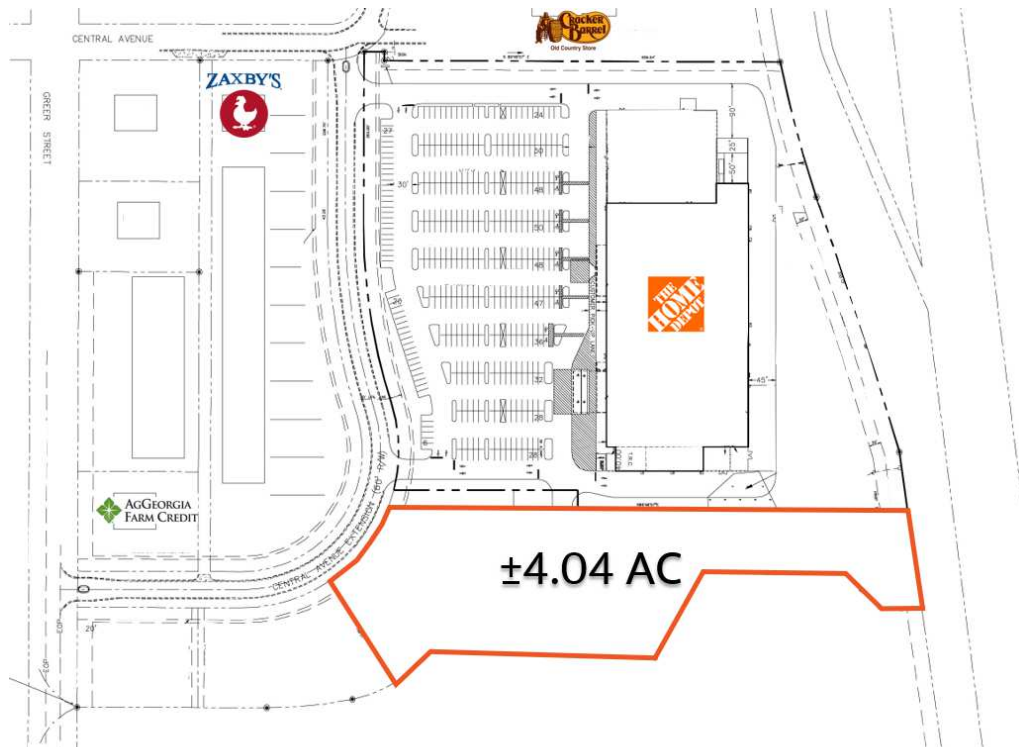
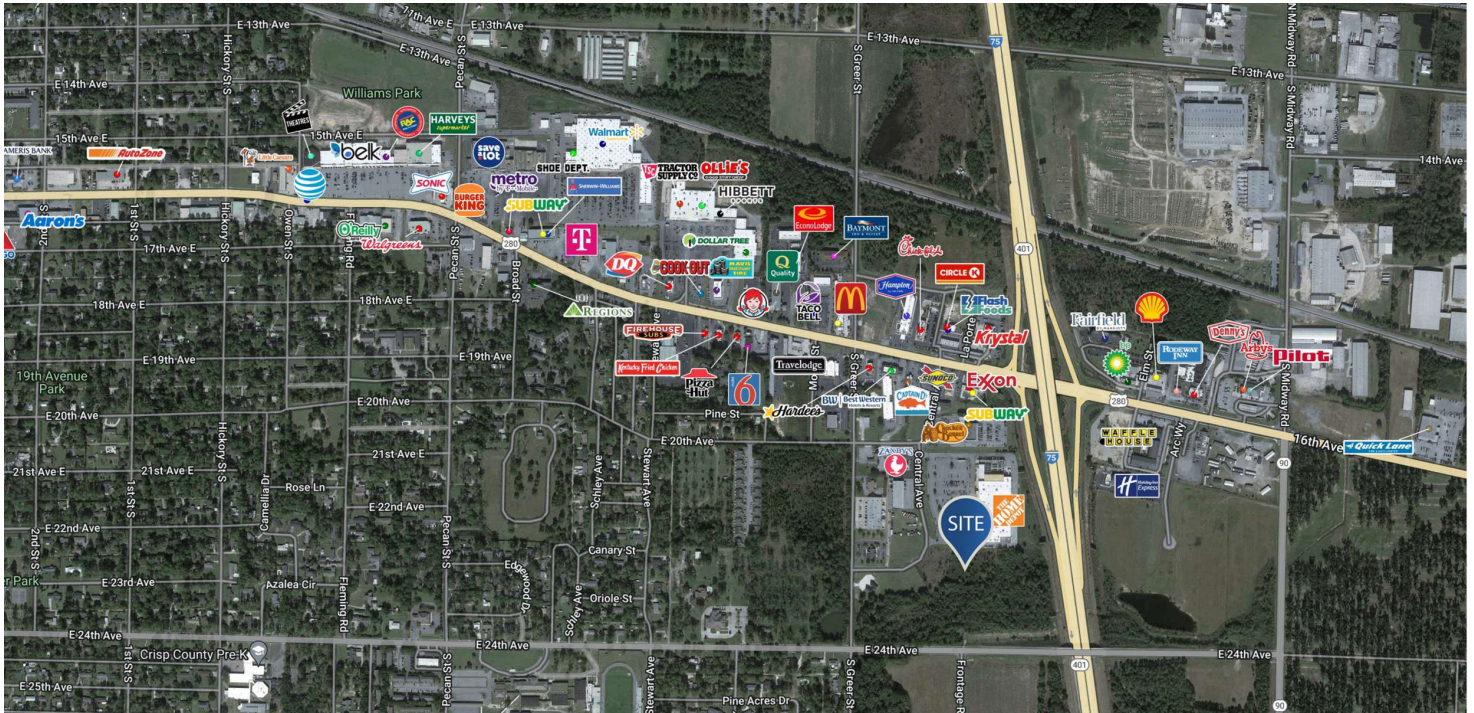
No warranty or representation, expressed or implied, is made as to the accuracy of the information contained herein, and same is submitted subject to errors, omissions, change of price, rental or other conditions, withdrawal without notice, any special list conditions imposed by our Principals.



±4.04 AC CORDELE, GA

2011 Central Ave., Cordele, GA 31015

Location Maps



KEITH VALENTINE

678.718.1882

KValentine@retail-pa.com

Retail Property Advisors // 678.718.1880 // 2100 RiverEdge Pkwy. // Suite 1050, Atlanta, GA 30328 // Retail-PA.com

ATLANTA // TAMPA // PASADENA, CA // AUBURN // SARASOTA // BALTIMORE

No warranty or representation, expressed or implied, is made as to the accuracy of the information contained herein, and same is submitted subject to errors, omissions, change of price, rental or other conditions, withdrawal without notice, any special list conditions imposed by our Principals.