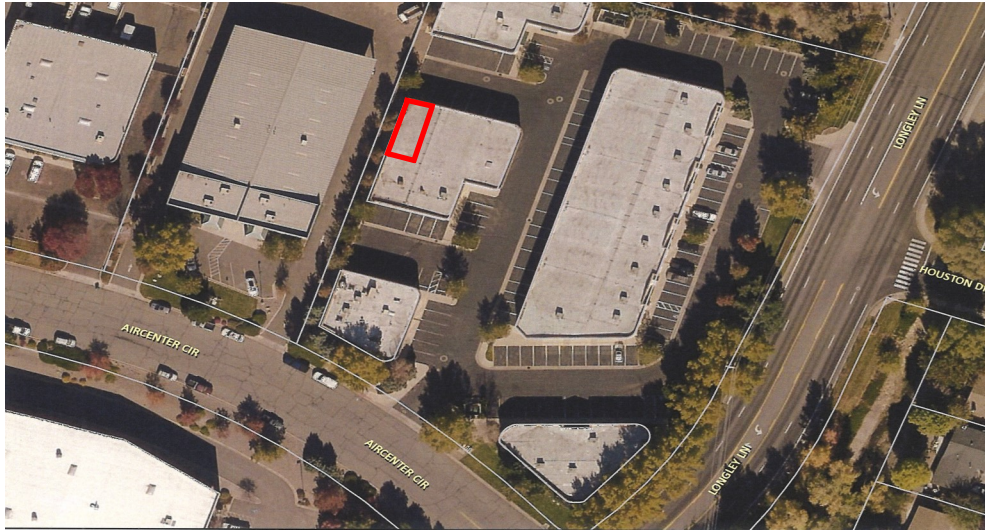




The Ribeiro Companies

# INDUSTRIAL FLEX SPACE FOR LEASE



**4583 LONGLEY LANE, SUITE #4  
RENO, NV 89502  
QUAIL POINT BUSINESS PARK**

**THE RIBEIRO COMPANIES HAVE SPECIALIZED IN COMMERCIAL PROPERTIES FOR OVER 50 YEARS.**

**EXCLUSIVELY LISTED  
LEASE OPPORTUNITY**

**EDWARD G. YUILL B.0018931.LLC**  
ED.YUILL@RIBEIROCORP.COM

**CALL US TODAY AT  
775.825.7979**



The Ribeiro Companies

6490 S. McCarran Blvd., Bldg. E  
Reno, NV 89509

**[www.ribeirocorp.com](http://www.ribeirocorp.com)**

**OFFICE HOURS:**  
Monday-Friday  
**8:00 AM—5:00 PM**

This information has been secured from sources we believe to be reliable, however, we make no representations or warranties, expressed or implied, as to the accuracy of the information. References to square footage or age are approximate. Buyer must verify the information and bears all risk for any inaccuracies. © 2014 The Ribeiro Companies  
[www.ribeirocorp.com](http://www.ribeirocorp.com)

**Project Mgt./Brokerage: Edward G. Yuill**

**Design/Development: Johnny A. Ribeiro**



The Ribeiro Companies

# PROPERTY INFORMATION

## 4583 LONGLEY LANE SUITE #4• RENO, NV 89502

Suite:	4
Asking Rent:	\$2,282.00 Per Month (\$1.35 psf)
Deposit:	\$3,043.00
Estimated CAM:	\$761.00 Per Month (\$0.45 psf)
Lease Term:	Two-Year minimum; 3% base rent increase
Property Type:	Industrial Commercial (IC) Industrial Flex Building
Lease Type:	NNN
Tenancy:	Multi
Square Footage:	1,690 sq. ft.
Available:	June 2025
Layout:	Open layout with a private restroom. Warehouse storage area with a 10'x12' roll up door.
Year Built:	2003
Broker:	3%

**THE RIBEIRO COMPANIES HAVE SPECIALIZED IN COMMERCIAL PROPERTIES FOR OVER 50 YEARS.**

**EXCLUSIVELY LISTED  
LEASE OPPORTUNITY**

**EDWARD G. YUILL B.0018931.LLC**  
ED.YUILL@RIBEIROCORP.COM

**CALL US TODAY AT  
775.825.7979**



The Ribeiro Companies

6490 S. McCarran Blvd., Bldg. E  
Reno, NV 89509

**www.ribeirocorp.com**

**OFFICE HOURS:**  
Monday-Friday  
**8:00 AM—5:00 PM**

This information has been secured from sources we believe to be reliable, however, we make no representations or warranties, expressed or implied, as to the accuracy of the information. References to square footage or age are approximate. Buyer must verify the information and bears all risk for any inaccuracies. © 2014 The Ribeiro Companies  
www.ribeirocorp.com

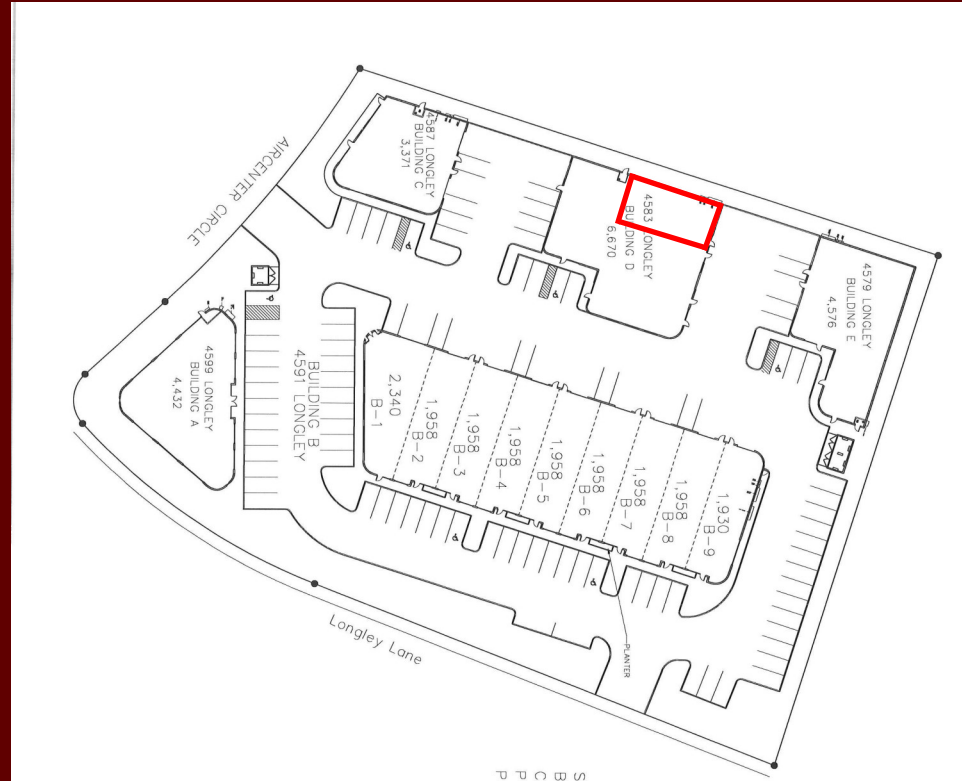
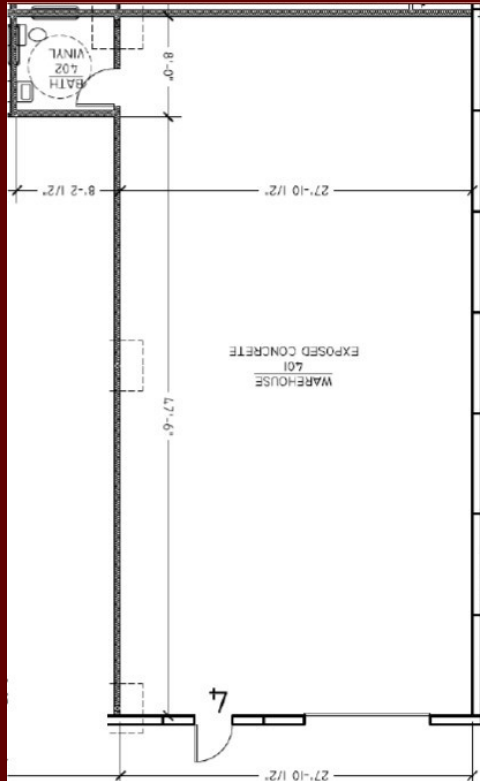
**Project Mgt./Brokerage: Edward G. Yuill**  
**Design/Development: Johnny A. Ribeiro**



The Ribeiro Companies

# SITE PLAN AND FLOOR PLAN

## 4583 LONGLEY LANE, SUITE #4 • RENO, NV 89502



THE RIBEIRO COMPANIES HAVE SPECIALIZED IN COMMERCIAL PROPERTIES FOR OVER 50 YEARS.

**EXCLUSIVELY LISTED  
LEASE OPPORTUNITY**

**EDWARD G. YUILL B.0018931.LLC**  
ED.YUILL@RIBEIROCORP.COM

**CALL US TODAY AT  
775.825.7979**



The Ribeiro Companies

6490 S. McCarran Blvd., Bldg. E  
Reno, NV 89509

[www.ribeirocorp.com](http://www.ribeirocorp.com)

**OFFICE HOURS:**  
Monday-Friday  
8:00 AM—5:00 PM

This information has been secured from sources we believe to be reliable, however, we make no representations or warranties, expressed or implied, as to the accuracy of the information. References to square footage or age are approximate. Buyer must verify the information and bears all risk for any inaccuracies. © 2014 The Ribeiro Companies  
[www.ribeirocorp.com](http://www.ribeirocorp.com)

**Project Mgt./Brokerage: Edward G. Yuill**

**Design/Development: Johnny A. Ribeiro**